



## Hermitage Court

Hermitage Court is a stately two-story professional and medical office building located within a stone's throw of I-5 from Exit 129. The building offers secure access to the elevator and stairs to the second floor, covered walkways, generous parking onsite, nicely manicured landscaping, and good signage exposure. Suite 204 is 2,164sf and features a receptionist's area off the entry and seven large offices, a restroom as well as a conference room. This office has plenty of windows and natural light. Suite 103 is a 1,200sf office with a reception/waiting area, three private offices, a semi private office, storage room, break room and two restrooms. Suite 201 is a 2,546sf office with receptionist/waiting area, open area, six private offices and two restrooms. Asking lease rate is \$18/sf/yr plus operating expenses which include the power.

## Property Overview

- Available Spaces:
  - Suite 103 of 1,200sf
  - Suite 201 of 2,546sf
  - Suite 204 of 2,164sf
- Asking Rate: \$18.00/SF/YR NNN
- NNN Includes Power

DISCLAIMER: The above information has been secured from sources believed to be reliable, however, no representations are made to its accuracy. Prospective tenants or buyers should consult their professional advisors and conduct their own independent investigation. Properties are subject to change in price and/or availability without notice.





# TACOMA OFFICE SPACE FOR LEASE

PHOTOS - SUITE 103



PHOTOS - SUITE 201



PHOTOS - SUITE 204



11120 Gravelly Lake Dr SW Ste 2  
Lakewood, Washington 98499  
johnson-commercial.com (253) 589-9999

**Margot Johnson**

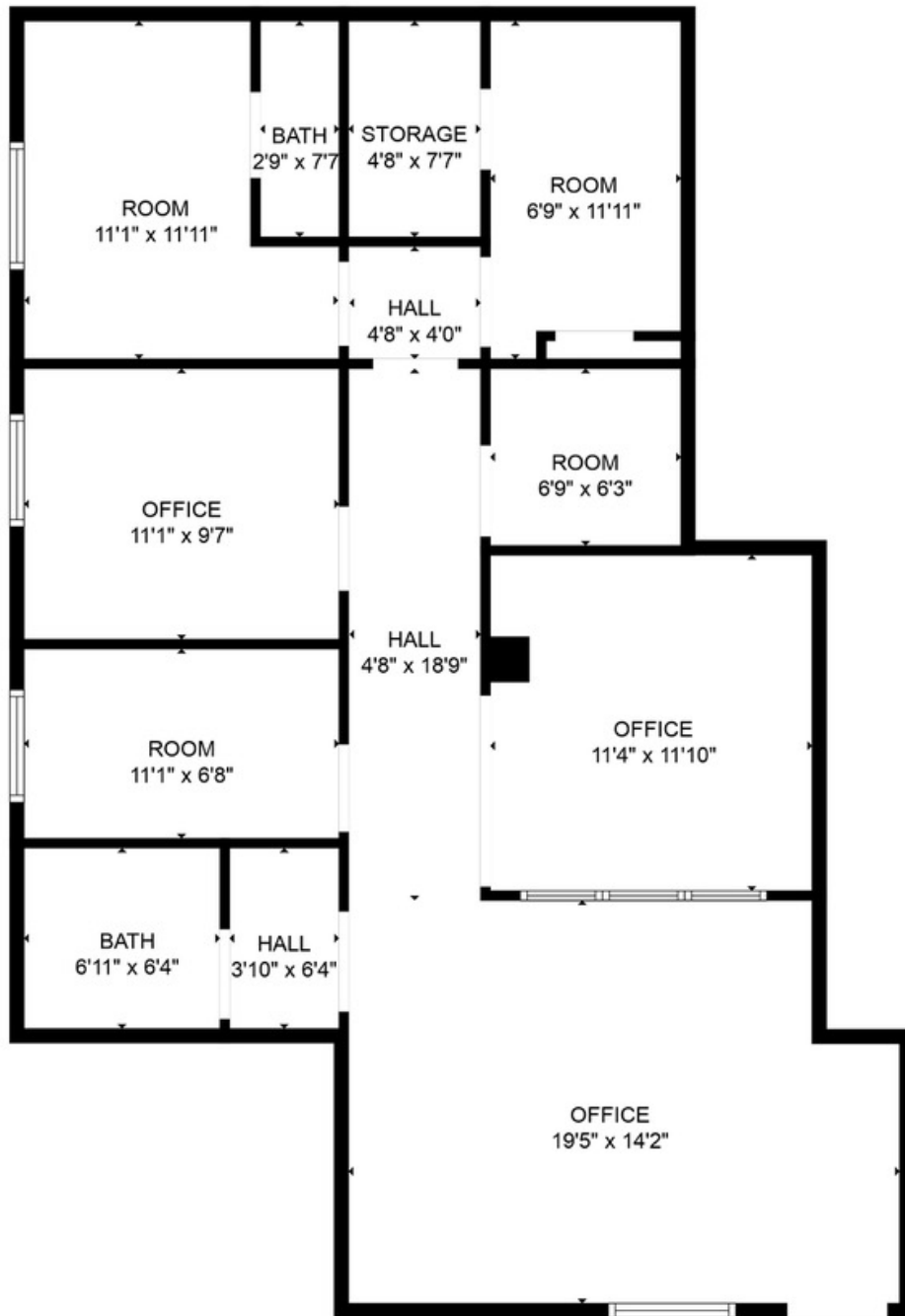
margot@johnson-commercial.com  
O: (253) 589-9999 C: (253) 209-9998

**Tim Johnson**

timothy@johnson-commercial.com  
O: (253) 589-9999 C: (253) 209-9999



FLOOR PLAN - SUITE 103



FLOOR PLAN CREATED BY CUBICASA APP. MEASUREMENTS DEEMED HIGHLY RELIABLE BUT NOT GUARANTEED.



11120 Gravelly Lake Dr SW Ste 2  
Lakewood, Washington 98499  
johnson-commercial.com (253) 589-9999

**Margot Johnson**

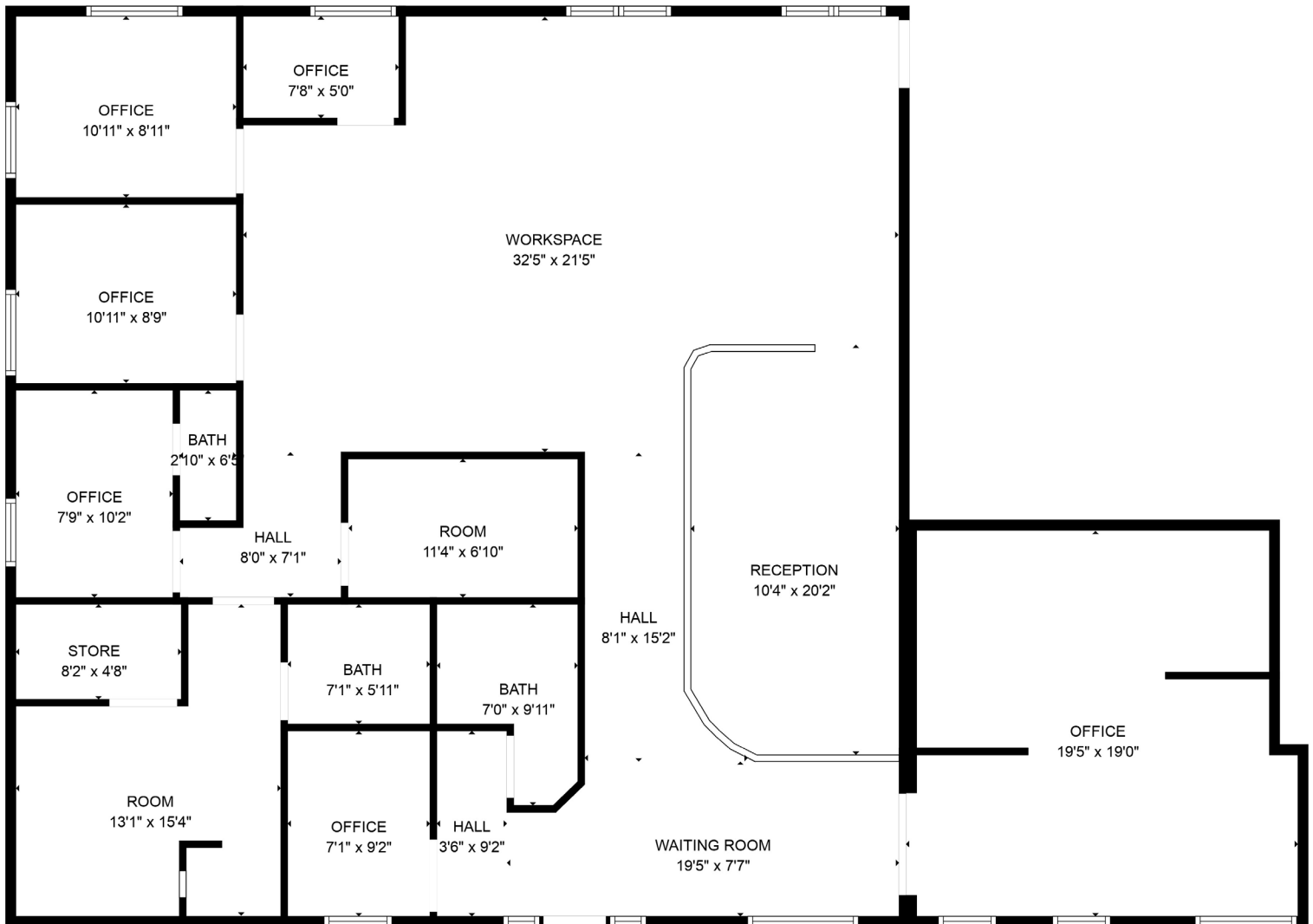
margot@johnson-commercial.com  
O: (253) 589-9999 C: (253) 209-9998

**Tim Johnson**

timothy@johnson-commercial.com  
O: (253) 589-9999 C: (253) 209-9999



FLOOR PLAN - SUITE 201



FLOOR PLAN CREATED BY CUBICASA APP. MEASUREMENTS DEEMED HIGHLY RELIABLE BUT NOT GUARANTEED.



11120 Gravelly Lake Dr SW Ste 2  
Lakewood, Washington 98499  
johnson-commercial.com (253) 589-9999

**Margot Johnson**

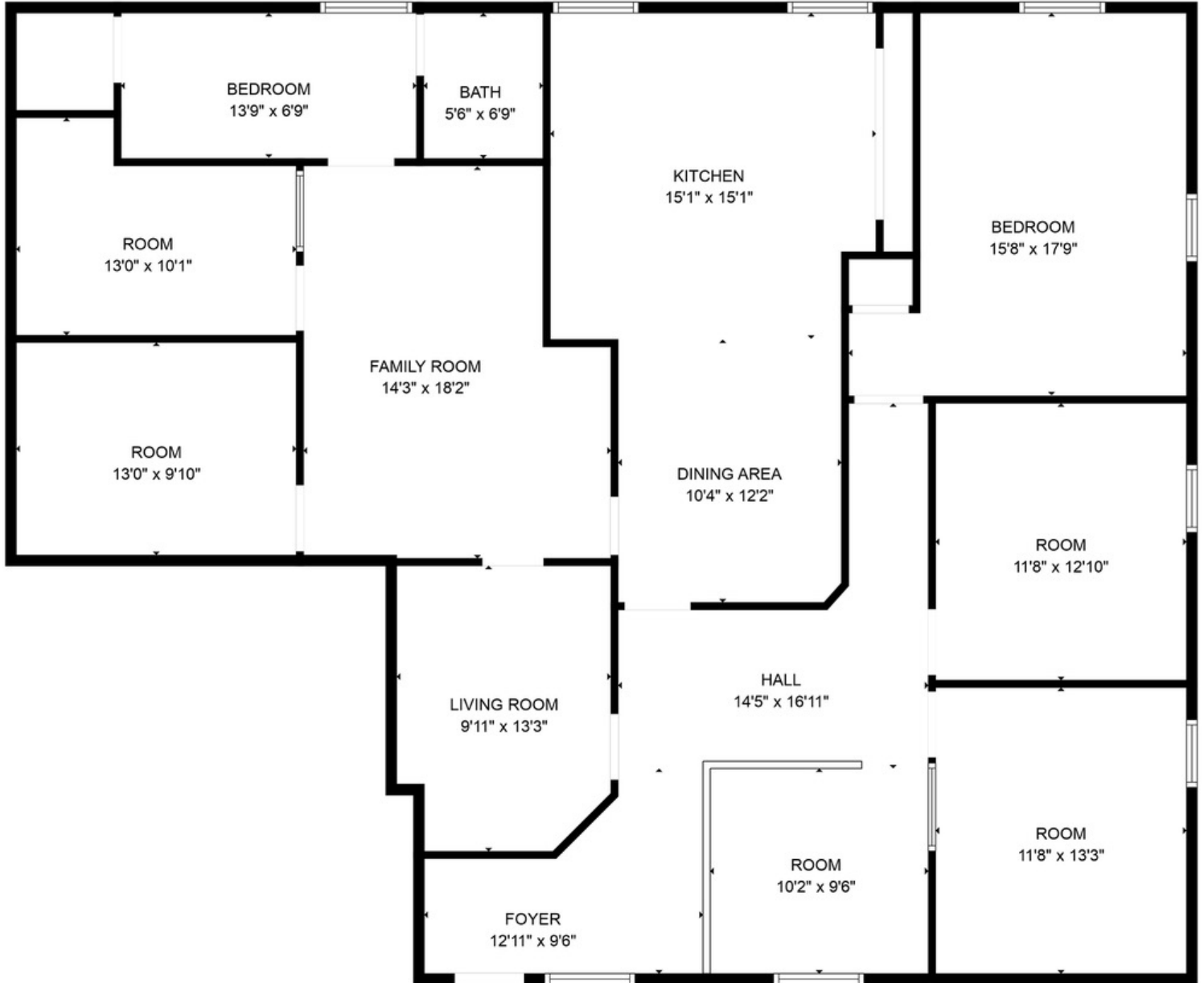
margot@johnson-commercial.com  
O: (253) 589-9999 C: (253) 209-9998

**Tim Johnson**

timothy@johnson-commercial.com  
O: (253) 589-9999 C: (253) 209-9999



FLOOR PLAN - SUITE 204



FLOOR PLAN CREATED BY CUBICASA APP. MEASUREMENTS DEEMED HIGHLY RELIABLE BUT NOT GUARANTEED.



11120 Gravelly Lake Dr SW Ste 2  
Lakewood, Washington 98499  
johnson-commercial.com (253) 589-9999

**Margot Johnson**

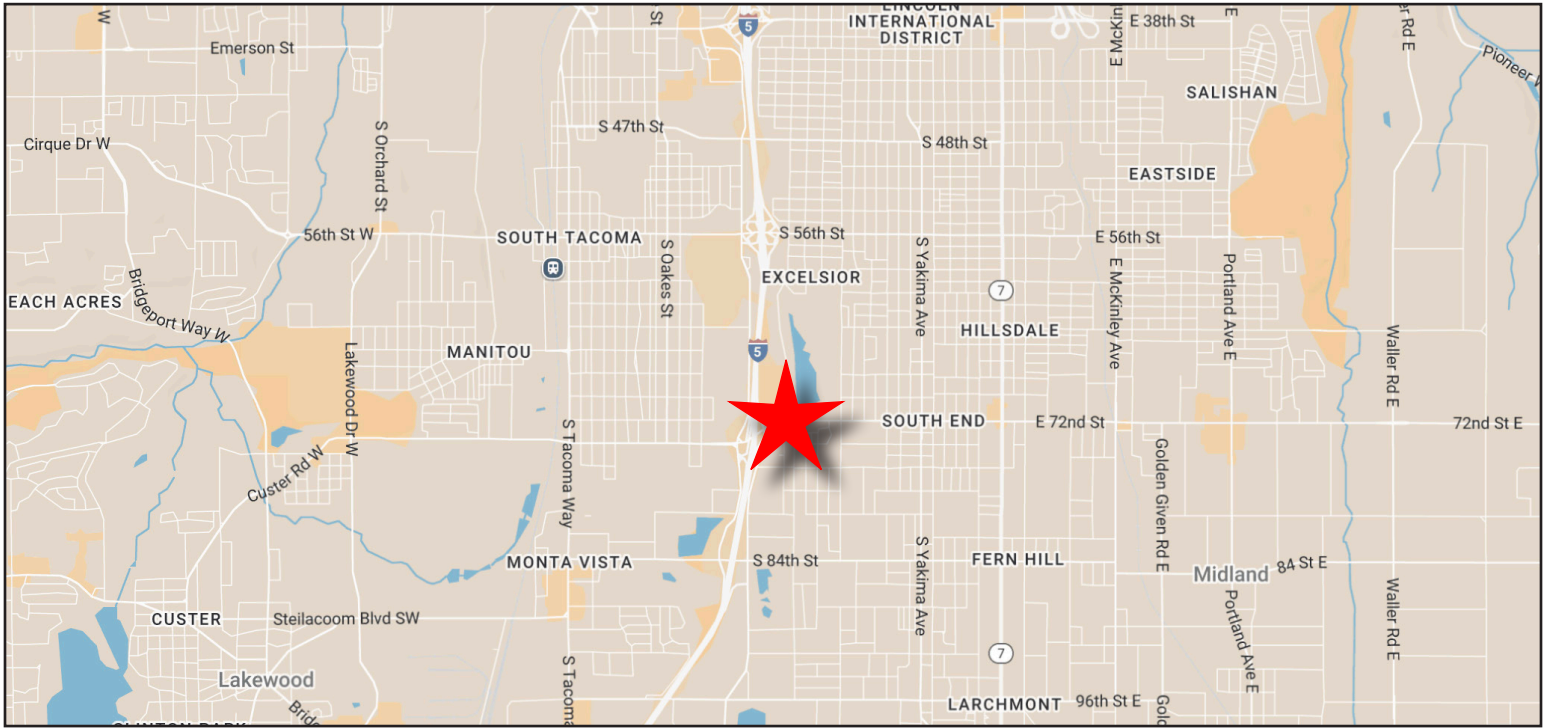
margot@johnson-commercial.com  
O: (253) 589-9999 C: (253) 209-9998

**Tim Johnson**

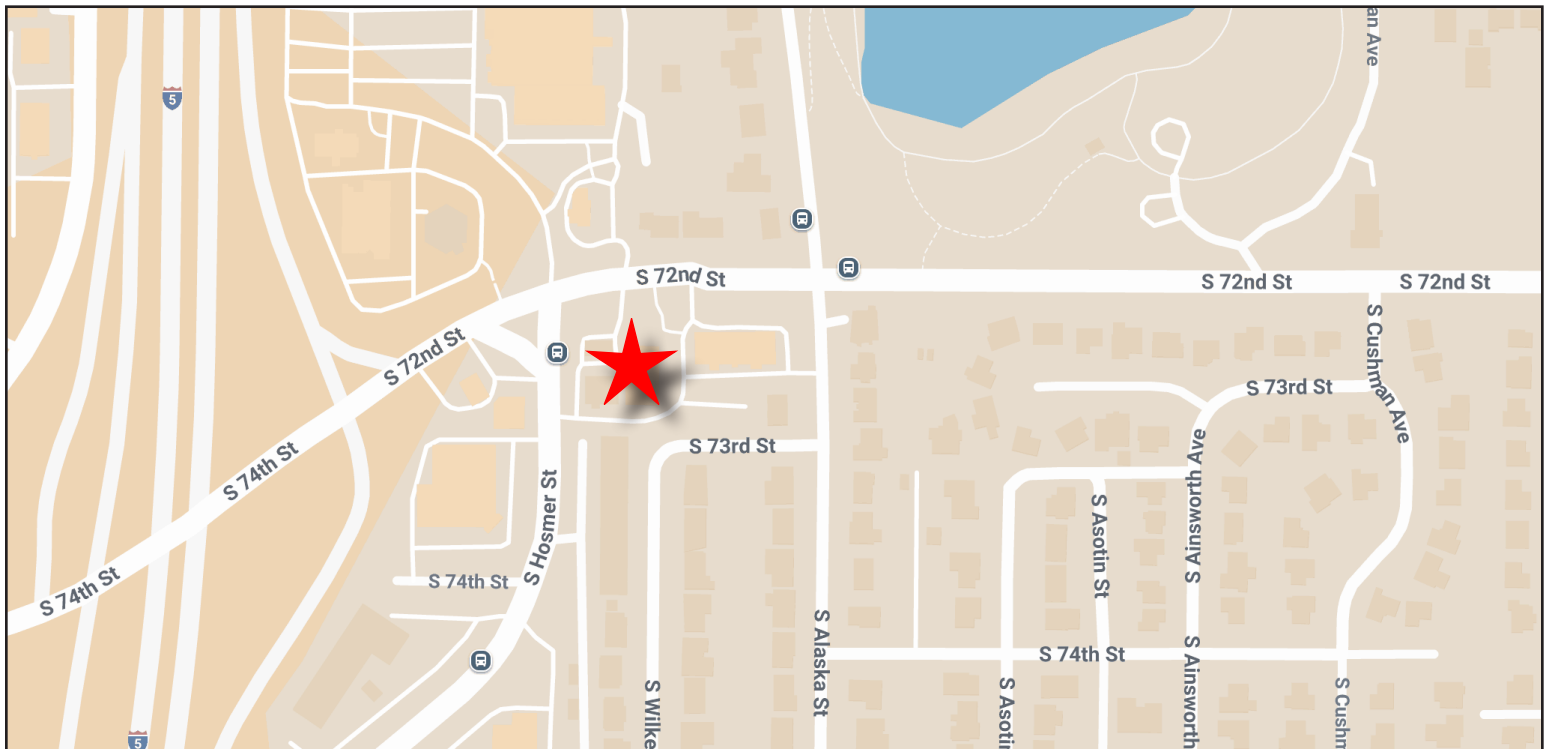
timothy@johnson-commercial.com  
O: (253) 589-9999 C: (253) 209-9999



AREA MAP



NEIGHBORHOOD MAP



11120 Gravelly Lake Dr SW Ste 2  
Lakewood, Washington 98499  
johnson-commercial.com (253) 589-9999

**Margot Johnson**

margot@johnson-commercial.com  
O: (253) 589-9999 C: (253) 209-9998

**Tim Johnson**

timothy@johnson-commercial.com  
O: (253) 589-9999 C: (253) 209-9999