

FOR SALE RESIDENTIAL & COMMERCIAL LOTS KILLDEER, ND

KILLDEER HIGHLANDS

PHASE 1:

17 Acres - Residential

- 12.5 Ac Zoned Multifamily
- 4.2 Ac Zoned Residential (Duplex/SF/TH)
- Single Family Lots +/- 9,500sf

14.6 Acres - Commercial

- 8.19 Ac Lot (Will Divide)
- 6.42 Ac Lot (Will Divide)

PHASE 2:

31 Acres - Residential

- 12.7 Ac Zoned Multifamily
- 15.1 Ac Zoned Residential
- 3.5 Ac R.O.W.
- City Water & Sewer
- All land is Annexed into City of Killdeer
- Adjacent to 12 Ac Park

For Info Contact:

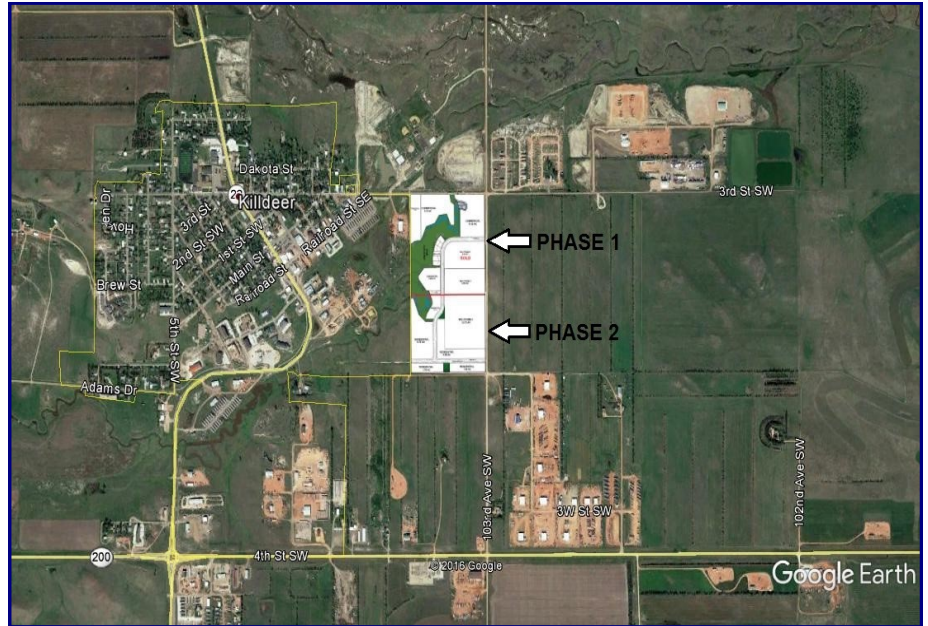
Jeremy A. Gray 214-498-2979 or
jgray@grayandcorealtors.com

GRAY & CO REALTORS, INC.

4305 MacArthur Ave.

Dallas, TX 75209

Phone: 214.220.0101



LOCATION:

Southwest corner of 103rd Avenue and High Street; 1/2 of a mile east of Hwy 22 in Killdeer, North Dakota. Highways 22 & 200 intersect in Killdeer.

LOT INFORMATION-PHASE 1:

- **FULLY DEVELOPED - ALL CITY UTILITIES**
- **Newly Developed Apartment Complex**
- **9,000 sf -12,000 sf Duplex/Townhome/SF lots**
- **5.55 Acres of Multifamily Zoned Land Remaining**
- **14.6 Acres of Commercial Zoned Lots Remaining**

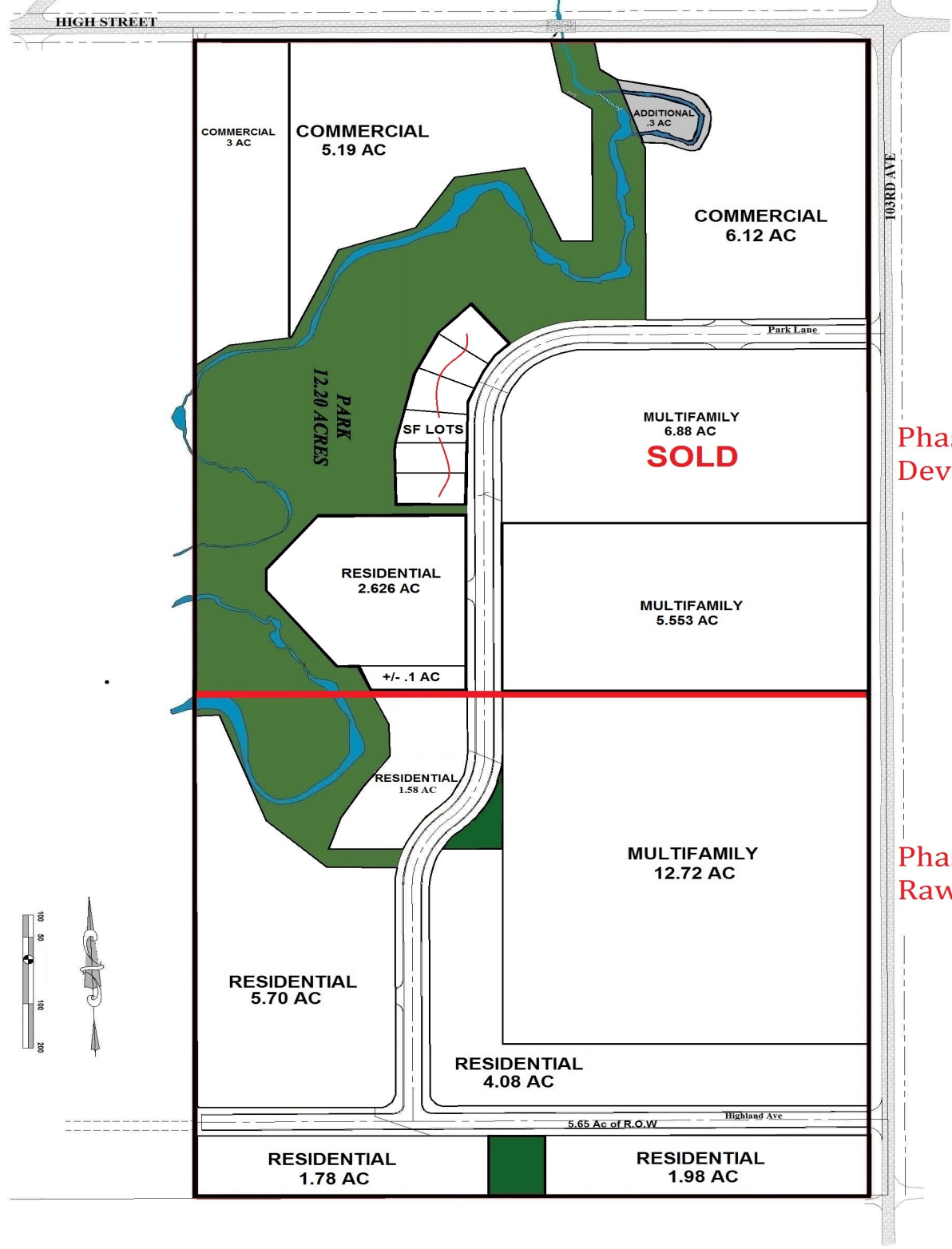
PRICE:

Call for pricing and availability.

**Jeremy A. Gray 214-498-2979 or
jgray@grayandcorealtors.com**

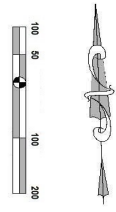
**Phase 1 fully developed lots in place
Phase 2 land available as raw land**

The information contained herein is from sources deemed reliable; however, Gray & Co Realtors, Inc. makes no representations or warranties as to the accuracy hereof.



Phase 1
Developed

Phase 2
Raw Land



1011	PROJECT TITLE	KILLDEER HIGHLANDS
	PROJECT NUMBER	1011
PAUL J. JOHNSON	DATE	10/26/17
	DESCRIPTION	CONCEPT PLAN
PAUL J. JOHNSON	SCALE	AS SHOWN
	DATE	10/26/17
PAUL J. JOHNSON	PROJECT LOCATION	KILLDEER, ND
	CLIENT	UNIVERSITY MICROFILMS
PAUL J. JOHNSON	PROJECT NUMBER	1011
	DATE	10/26/17
PAUL J. JOHNSON	PROJECT TITLE	KILLDEER HIGHLANDS
	PROJECT NUMBER	1011

KILLDEER HIGHLANDS

KILLDEER, ND

609 N. Calgary St., Ste 7
Fargo, ND 58103-2354
PHONE (701) 773-2378
FAX (701) 773-2158
www.inconorth.com



3rd St SW

High St

Phase 1

© 2016 Google

Phase 2

103rd Ave SW

