



# MEDICAL OFFICE FOR LEASE

10 Parsonage Drive, Edison, New Jersey

**1,585 SF Medical Suite  
Available For Lease**



PRESENTED BY:

**JON STRAVITZ, ESQ. & SIOR**  
JSTRAVITZ@BIOCCRE.COM  
212.252.8799

**JOHN AIRES, MSRE & SIOR**  
JAIRE@BIOCCRE.COM  
212.252.8766

# MEDICAL SUITE OVERVIEW



## PROPERTY DESCRIPTION

Executive Plaza is a Professional & Medical Class A Office Building, perfectly accessible due to its location. The notable tenants include the following: Urgent Care, Ambulatory Surgery, Orthopedics, Urology, Physical Therapy & MRI.

### LOCATION OVERVIEW

Executive Plaza is located on Parsonage Road across from the super-regional Menlo Park Mall in Edison, NJ. The property is visible from and immediately accessible to US Route 1 and less than 2 miles to the Garden State Parkway, NJ Turnpike and I-287. It is 1 mile from JFK Medical Center and approximately 2 miles to both Metropark and Metuchen Train Stations.

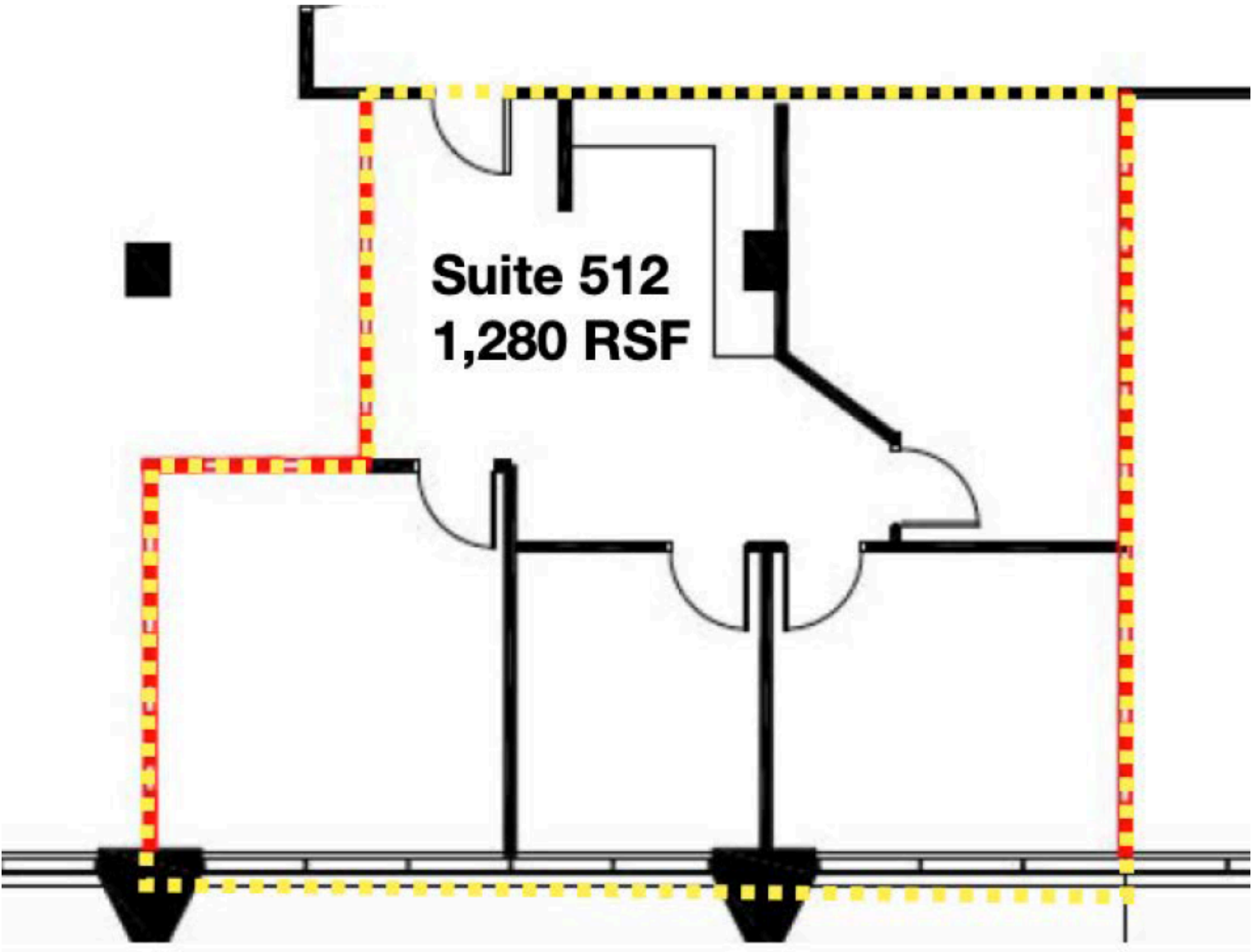
## 10 PARSONAGE DRIVE:

<b>Building Class:</b>	Class A
<b>Building Size:</b>	115,200
<b>Available SF:</b>	1,280 RSF
<b>Year Built:</b>	1971
<b>Zoning:</b>	G-BH - General Business District
<b>Elevators:</b>	3 Passenger Elevators

## ASKING \$35 PER SF PLUS TE

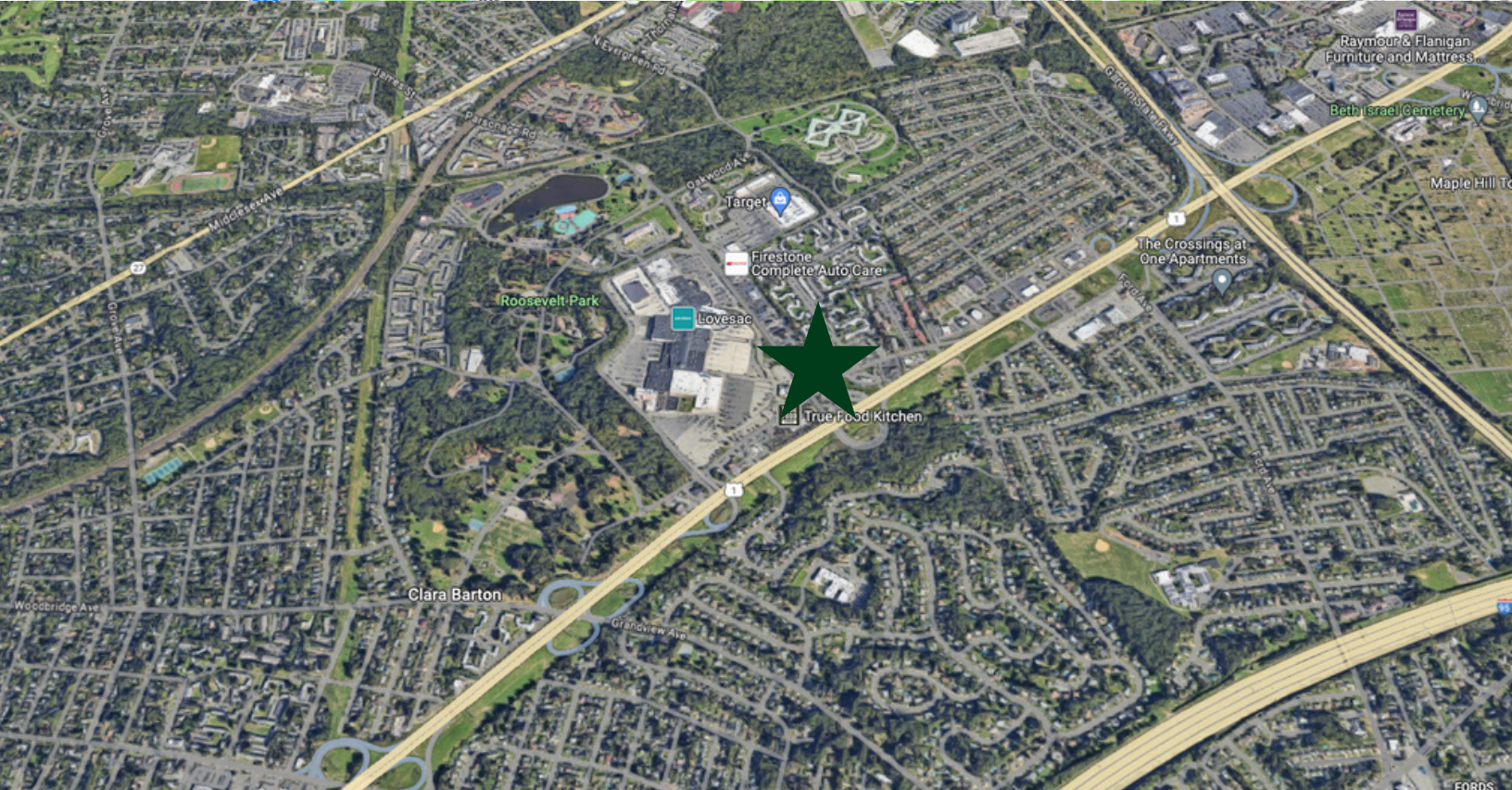
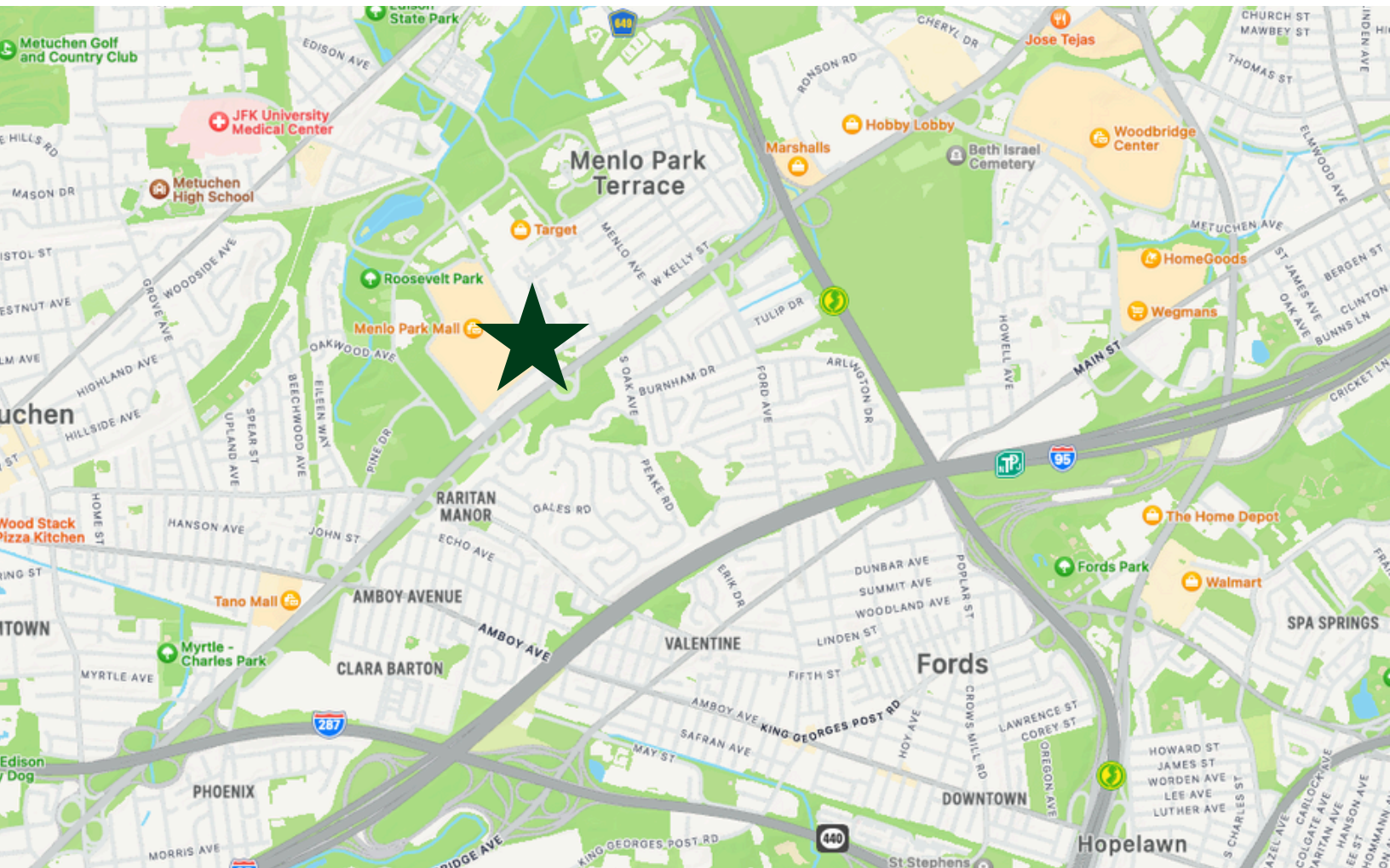
Please contact Jon D. Stravitz for additional information and questions at [jstravitz@biocre.com](mailto:jstravitz@biocre.com) or 212.252.8799

FLOOR PLAN





# LOCATION MAP







**B I O C**  
Commercial Real Estate

**For Additional Information Please Contact:**

**JON STRAVITZ, ESQ. & SIOR**  
**JSTRAVITZ@BIOCCRE.COM**  
**212.252.8799**

**JOHN AIRES, MSRE & SIOR**  
**JAIRE@BIOCCRE.COM**  
**212.252.8766**



**BIOC Commercial Real Estate, LLC**

*"In the Best Interest of Our Clients"*

The information contained herein has been obtained from sources considered to be reliable, but no guarantee of its accuracy is made by BIOC Commercial Real Estate, LLC.