

# GATEWAY CENTER

Space Available  
Cottage Grove, MN

80th Street & East Point Douglas Road | Cottage Grove, MN 55016



Gateway Center is a multi-tenant retail center. Constructed in 2002, the 12,950 SF development is located off of Highway 61 at the intersection of 80th Street & East Point Douglas Road.

Gateway Center is easily accessible and provides convenient access to retail neighbors Caribou Coffee and BWW-Go

For more information or to schedule a property tour please contact us directly.

## Available For Lease

1,527 SF - In-Line Space

- 1,527 SF In-Line Space
- Former Chiropractor
- Negotiable Rates
- Negotiable TI's
- Immediate Occupancy Available

**Tour Today!**

## Demographics

	1 - Mile	3 - Miles	5 - Miles
Population	10,304	49,449	96,376
Daytime Population	3,214	8,476	18,582
Households	3,894	16,844	34,884
Average HH Income	\$111,716	\$134,524	\$133,080

DATA SOURCE: STDB | ESRI

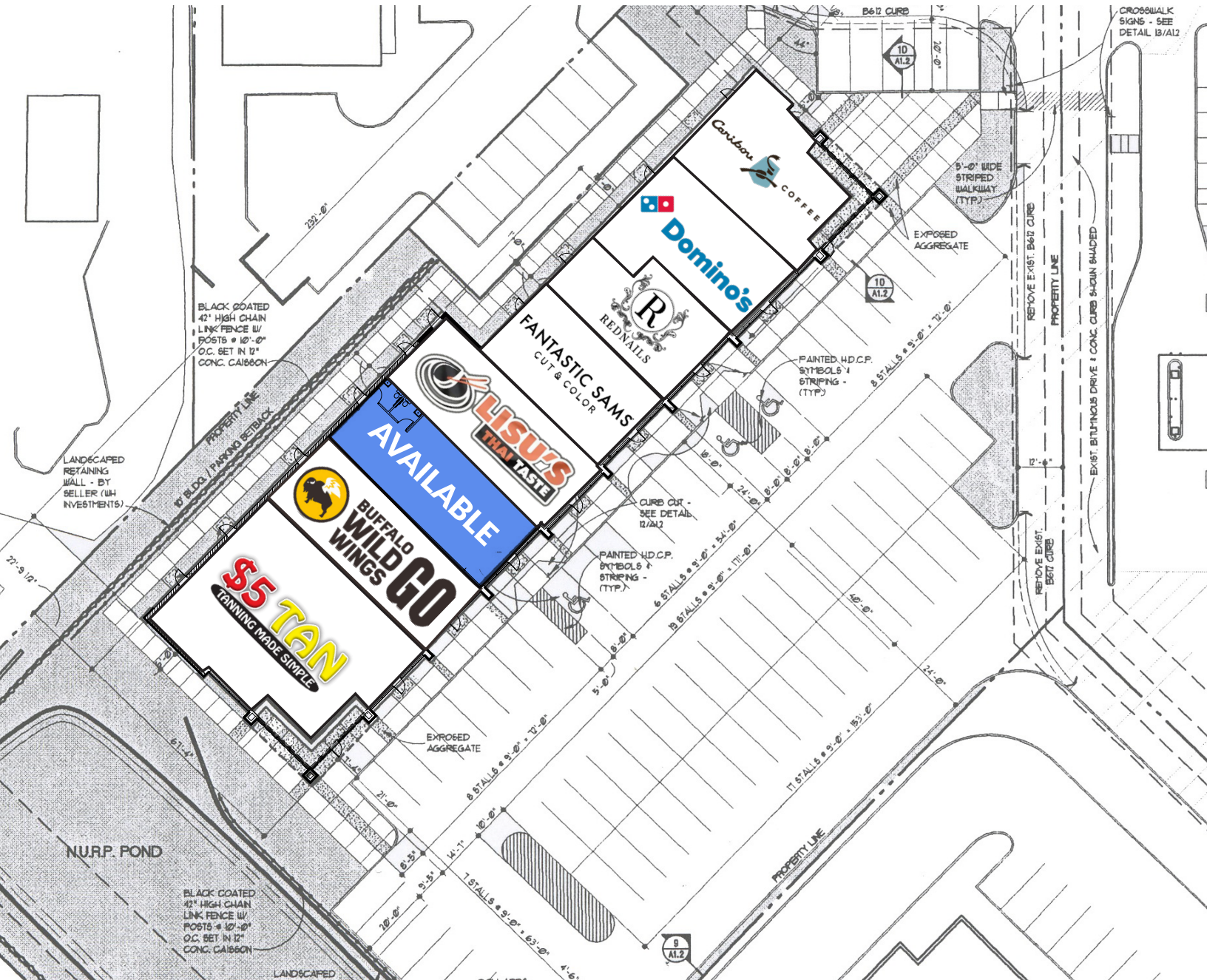
## Leasing Info

**Brian Merz**  
(763) 285-7235  
bmerz@hjdevelopment.com

**Chris Moe, CCIM**  
(763) 285-7236  
cmoe@hjdevelopment.com

hjdevelopment.com

**HJ** hj development



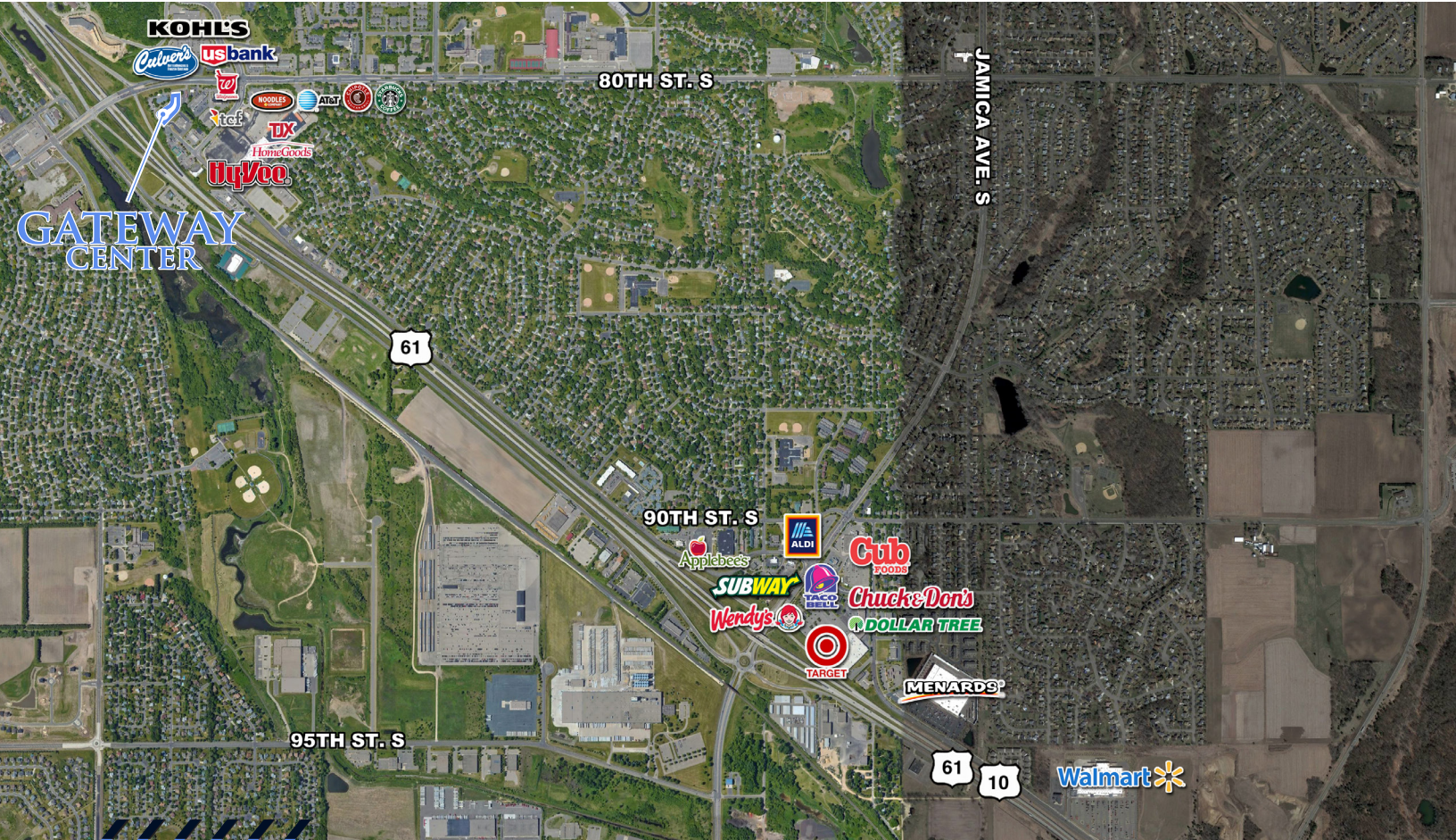
Suite	7145 E. Point Douglas Rd	Sq. Ft.
100	Caribou Coffee	1,589
110	Domino's Pizza	1,386
120	Red Nails	1,170
130	Fantastic Sam's	1,263
140	Lisu's Thai Taste	1,379
150	Vacant	1,527
160	BWW-Go	1,527
180	\$5 Tan	3,109





# Gateway Center

80th St. & East Point Douglas Rd. | Cottage Grove, MN 55016



2655 Cheshire Lane North • Plymouth • MN • 55447 • [hjdevelopment.com](http://hjdevelopment.com)