

# HEMBREE PARK

645 Hembree Park Drive Roswell, GA 30076

FOR LEASE

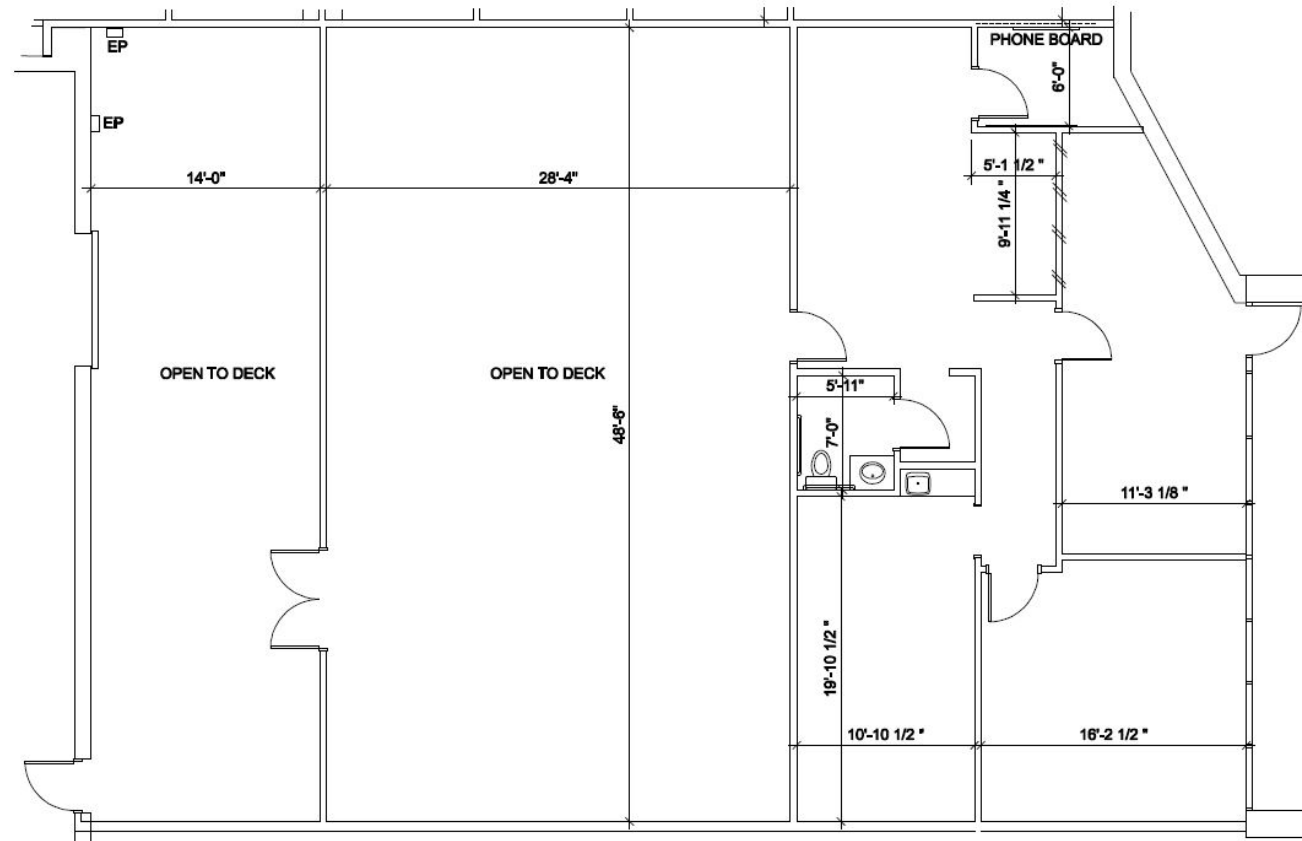
3,381 SF | SUITE H



# Floor Plan – Suite H

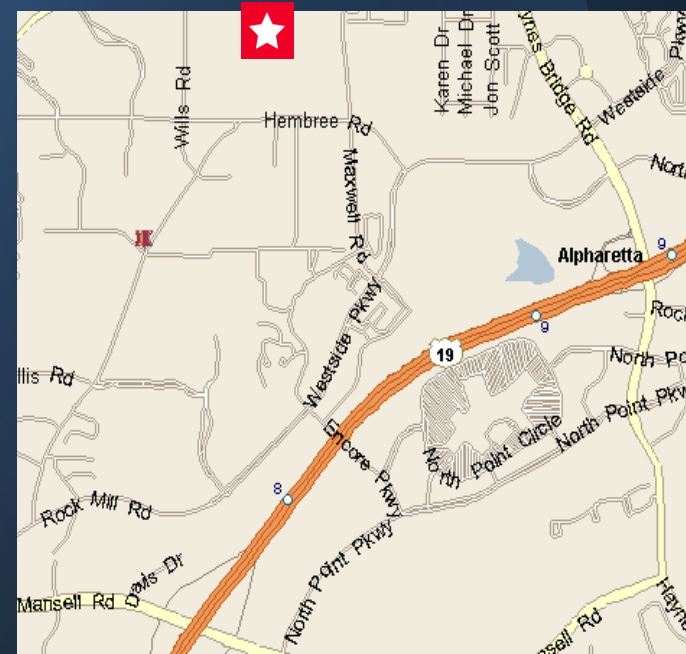
## 3,381 SF

- 45,037 SF Total Building
- Built in 1986
- 40% office
- 60% warehouse
- 1 grade level door



3,381 SF

Suite H  
645 Hembree Parkway



©2022 Cushman & Wakefield. All rights reserved.  
This information has been obtained from sources believed to be reliable but has not been verified.  
NO WARRANTY OR REPRESENTATION, EXPRESS OR IMPLIED, IS MADE AS TO THE CONDITION OF THE PROPERTY (OR PROPERTIES) REFERENCED HEREIN OR AS TO THE ACCURACY OR COMPLETENESS OF THE INFORMATION CONTAINED HEREIN, AND SAME IS SUBMITTED SUBJECT TO ERRORS, OMISSIONS, CHANGE OF PRICE, RENTAL OR OTHER CONDITIONS, WITHDRAWAL WITHOUT NOTICE, AND TO ANY SPECIAL LISTING CONDITIONS IMPOSED BY THE PROPERTY OWNER(S). ANY PROJECTIONS, OPINIONS OR ESTIMATES ARE SUBJECT TO UNCERTAINTY AND DO NOT SIGNIFY CURRENT OR FUTURE PROPERTY PERFORMANCE.

**ANDREW THURMAN**  
Senior Associate  
Direct: 404 682 3429  
Cellular: 404 775 2268

**PAT MURPHY**  
Managing Director  
Direct: 404 682 3405  
Cellular: 770 853 8796

**TARA HEALY**  
Director  
Direct: 404 682 3430  
Cellular: 678 468 9133



1180 Peachtree St NE, Suite 3100  
Atlanta, Georgia 30309