

**1625 TULLY ROAD  
SAN JOSE,  
CALIFORNIA**

# PRIME RETAIL / OFFICE ALONG MAJOR SAN JOSE THOROUGHFARE



## PROPERTY HIGHLIGHTS:

- Suite A: 1,475± SF
- Close Proximity to Highway 101
- Ample Parking
- High Traffic Area
- Strong Retail Corridor
- Easy Access Into Center
- Asking \$3.50, plus NNN
- Available w/ 60 Days Notice
- DO NOT DISTURB TENANTS

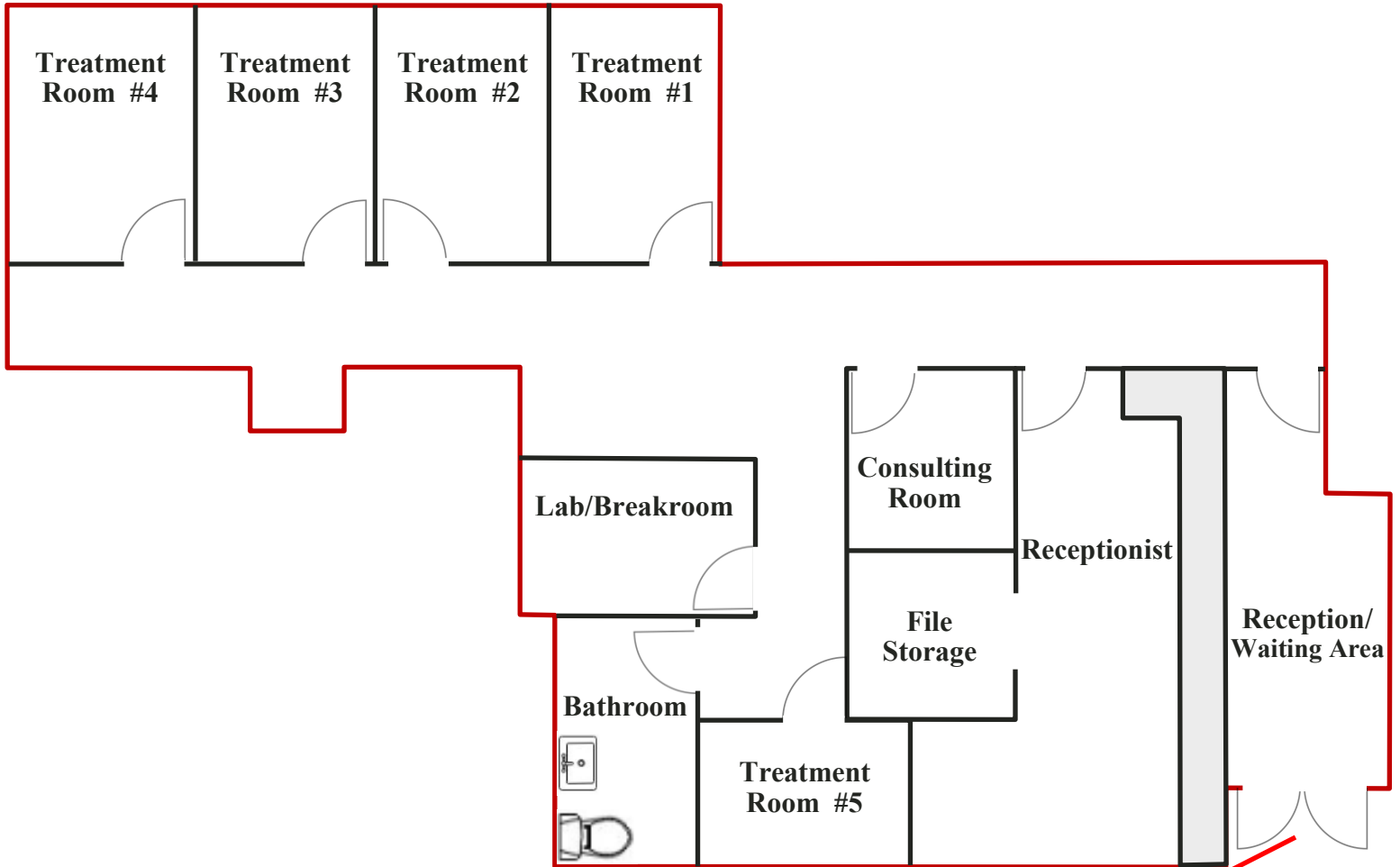
**FOR MORE INFORMATION CONTACT:**

**Ryan Warner**  
Lic. #01397580  
**[rwarner@moinc.net](mailto:rwarner@moinc.net)**  
**(408) 477-2505**

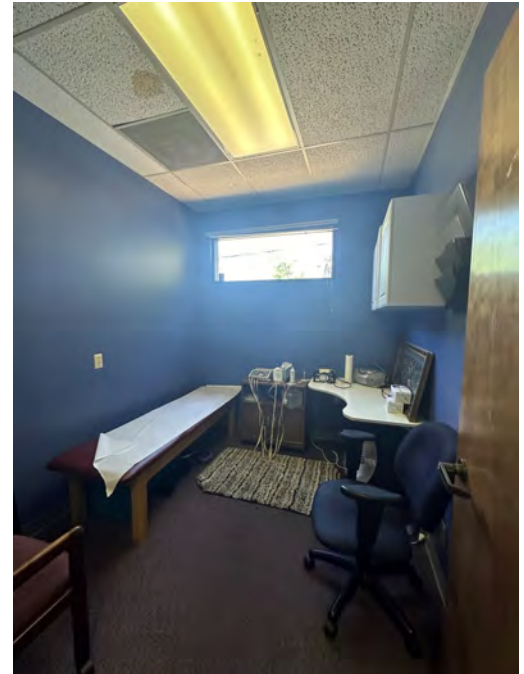
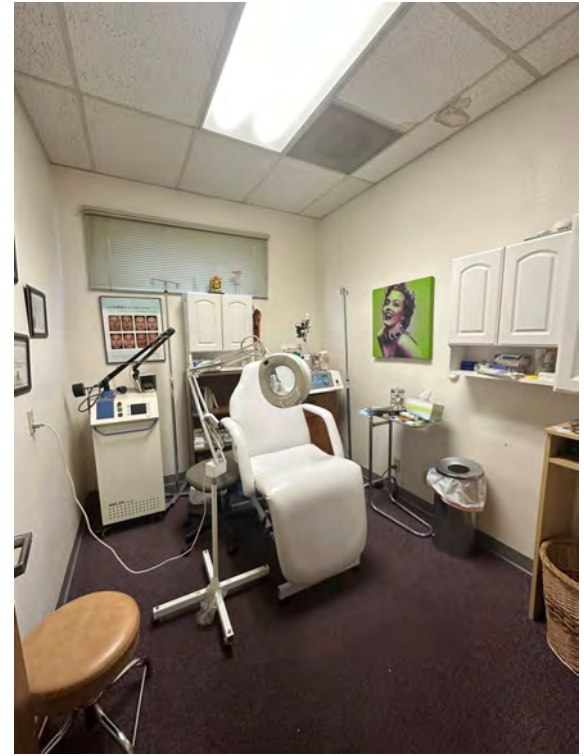


Meacham/Oppenheimer, Inc.  
8 N. San Pedro St., Suite 300  
San Jose, California 95110  
Tel: 408.378.5900  
[www.moinc.net](http://www.moinc.net)

# SITE PLAN



# INTERIOR PHOTOS: SUITE A - 1,475± SF



# EXTERIOR PHOTOS



The information contained herein has been obtained from sources we deem reliable. We cannot, however, assume responsibility for its accuracy.

# SURROUNDING RETAIL





## DEMOGRAPHICS

2024 SUMMARY	1-MILE	3-MILE	5-MILE
Population	37,158	274,762	588,322
Average HH Income	\$135,722	\$145,803	\$168,647
Businesses	846	7,088	18,764
Employees	6,958	54,289	183,662



Meacham/Oppenheimer, Inc.  
 8 N. San Pedro St., Suite 300  
 San Jose, California 95110  
 Tel: 408.378.5900  
 www.moinc.net

**RYAN WARNER**  
 Lic. #01397580  
 rwarner@moinc.net  
 408.477.2505