



**MEDICAL ASSET
MANAGEMENT**
MEDICAL PROPERTY SPECIALISTS



Santee Medical Center | 8760 Cuyamaca Street | Santee, CA
Medical Office Suites For Lease

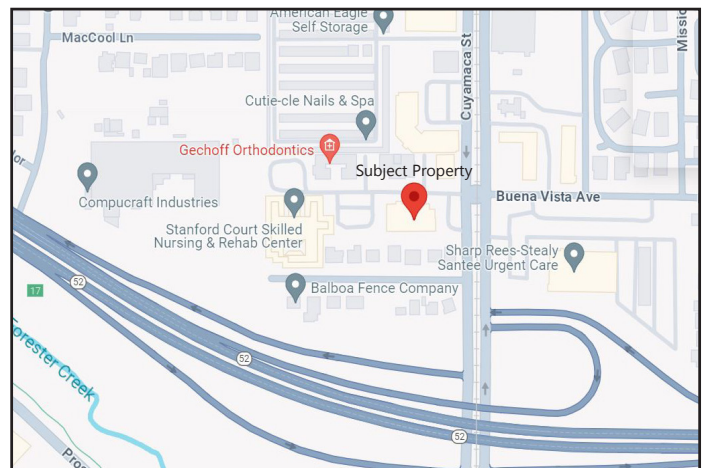
Available Suites	Sq. Ft.	Rental Rate
Suite 100	11,696 RSF	\$1.75/SF NNN
Suite 200	8,474 RSF	\$1.60/SF NNN
Suite 201	1,470 RSF	\$1.60/SF NNN

*All Suites Available – July 01, 2025

Term 3 to 10 years

Features

- Centrally located in East San Diego County
- Conveniently located to 52 Freeway & Metrorail
- Flexible Floorplan
- Under New Ownership and Management
- Undergoing cosmetic renovations



Contact

Alphonzo Hicks
(818) 616-7210
alphonzoh@medicalasset.com
DRE#: 02032369
www.medicalasset.com

Mitch Yankowitz
(310) 517-4861
mitchy@medicalasset.com
DRE#: 01360137

South Bay
201 Continental Blvd., Ste. 210
El Segundo, CA 90245

Downtown Los Angeles
1400 S. Grand Ave., Ste. 808
Los Angeles, CA 90015

San Fernando Valley
5411 Etiwanda Ave., Ste. 208
Tarzana, CA 91356

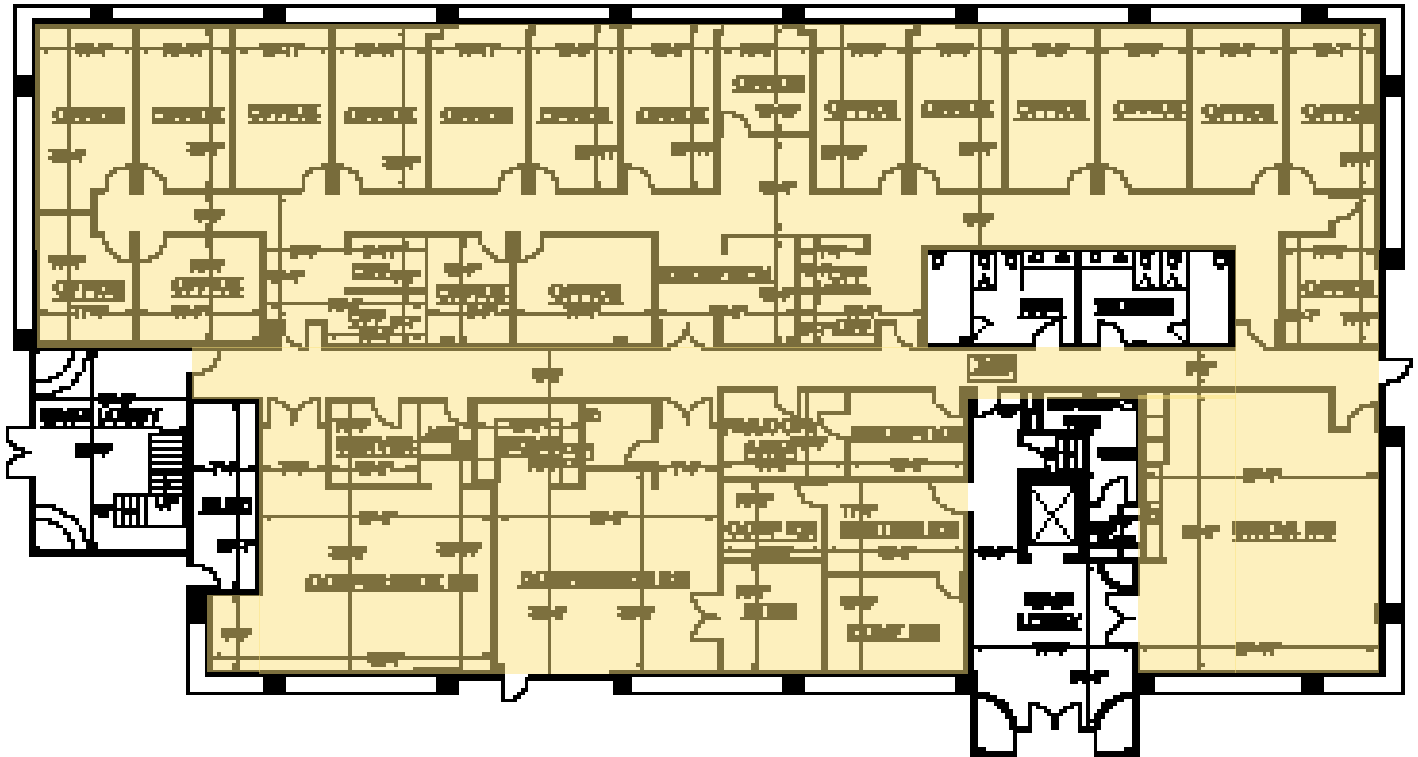
Long Beach
1040 Elm Ave., Ste. 308
Long Beach, CA 90813



MEDICAL ASSET
MANAGEMENT
MEDICAL PROPERTY SPECIALISTS

Santee Medical Center | 8760 Cuyamaca Street | Floorplans

Suite 100
11,696 RSF

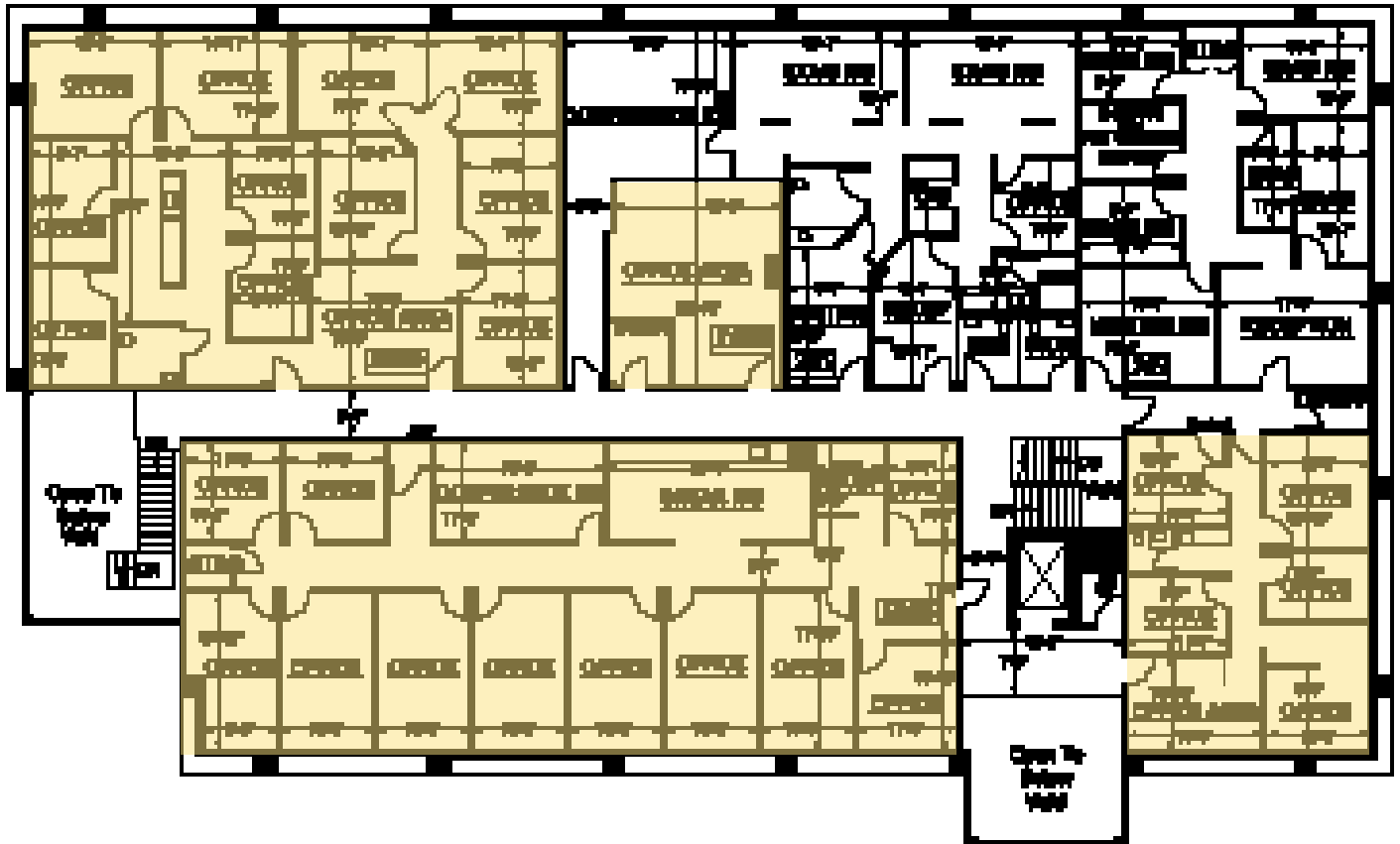




**MEDICAL ASSET
MANAGEMENT**
MEDICAL PROPERTY SPECIALISTS

Santee Medical Center | 8760 Cuyamaca Street | Floorplans

Suite 200/100
8,474 RSF

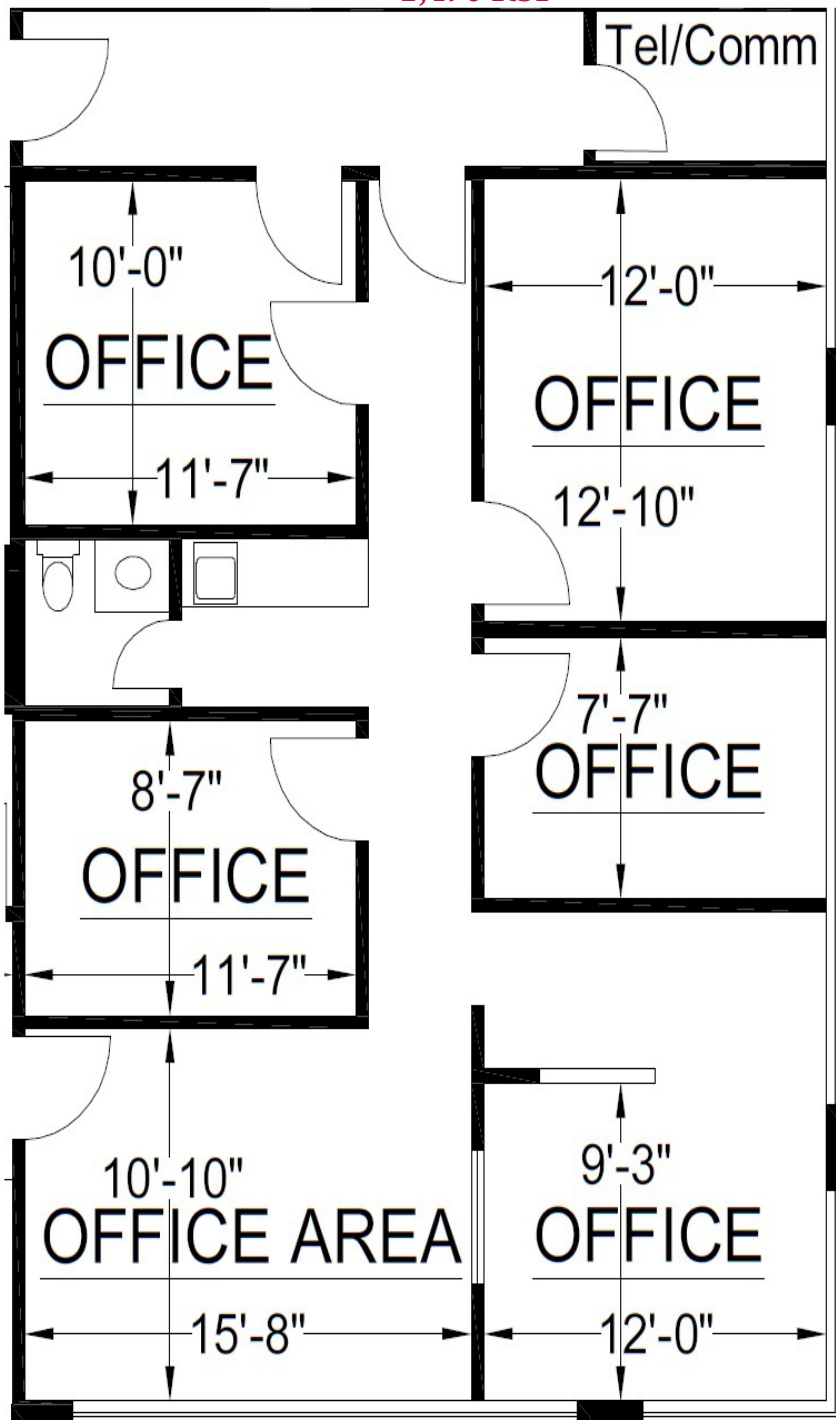




MEDICAL ASSET
MANAGEMENT
MEDICAL PROPERTY SPECIALISTS

Santee Medical Center | 8760 Cuyamaca Street | Floorplans

Suite 201
1,470 RSF



The information contained herein is deemed reliable, but cannot be guaranteed by Medical Asset Management and is subject to change.