

US HIGHWAY 75

FM 543 (SPUR 196)

FUTURE US HIGHWAY 380 EXPANSION  
\*\* TO BE VERIFIED \*\*

B5 REAR LOAD  
68,240 SF  
(20) 9'x10'  
(2) 12'x14' OVHD W/ RAMP

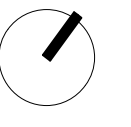
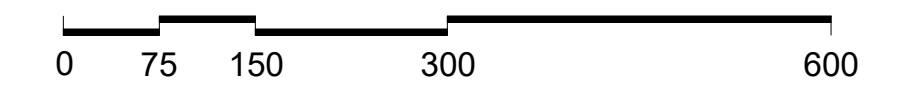
B4 SIDE LOAD  
30,000 SF  
(4) 9'x10'  
(1) 12'x14' OVHD W/ RAMP

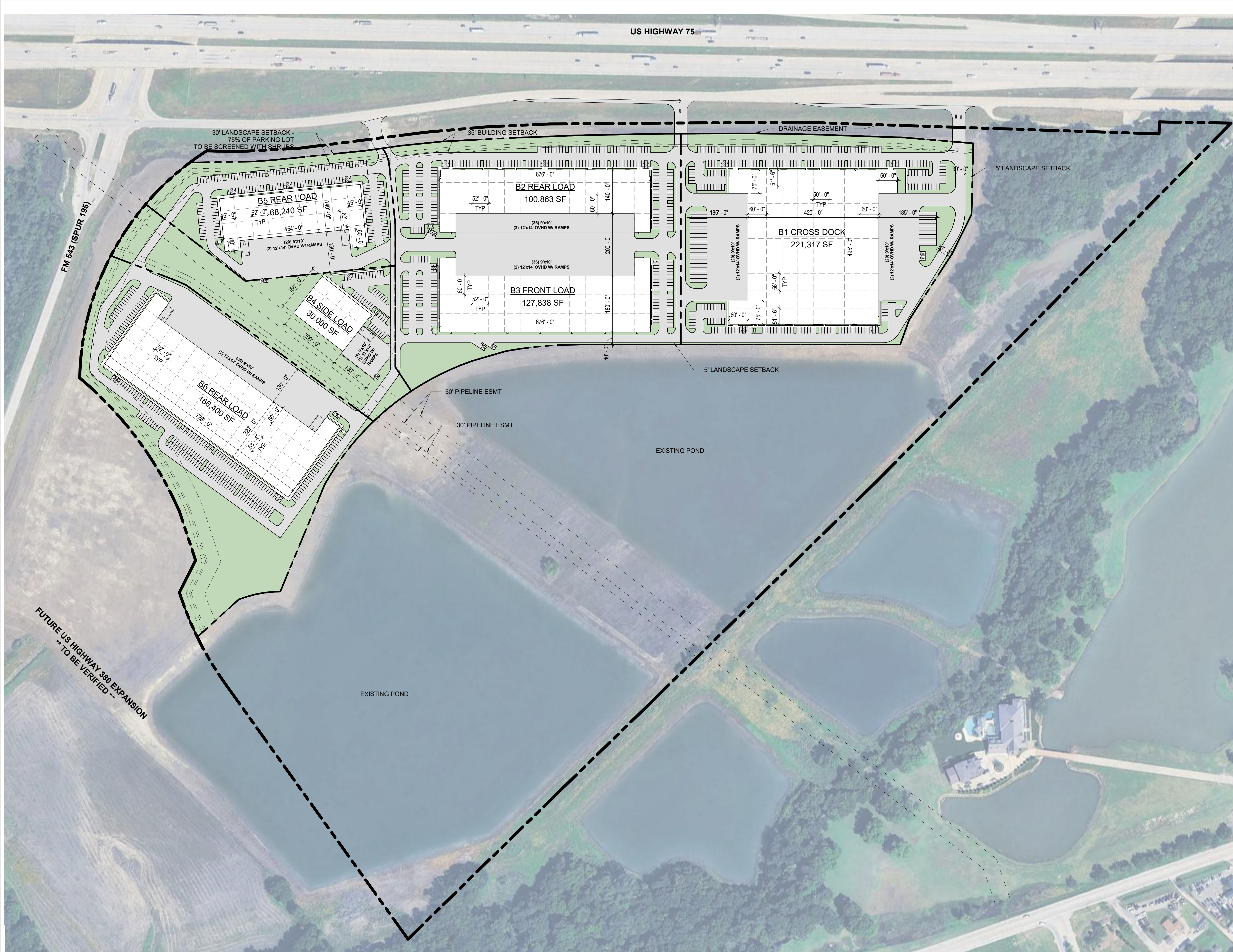
B6 REAR LOAD  
166,400 SF  
(2) 12'x14' OVHD W/ RAMP

B2 REAR LOAD  
100,863 SF  
(36) 9'x10'  
(2) 12'x14' OVHD W/ RAMP

B3 FRONT LOAD  
127,838 SF  
(36) 9'x10'  
(2) 12'x14' OVHD W/ RAMP

B1 CROSS DOCK  
221,317 SF  
(2) 9'x10'  
(3) 12'x14' OVHD W/ RAMP





**SITE SF**

TYPE	AREA	AREA (SF)
INDUSTRIAL SITE A	13.21 acres	575,512.97 ft <sup>2</sup>
INDUSTRIAL SITE B	14.70 acres	640,197.76 ft <sup>2</sup>
INDUSTRIAL SITE C	5.35 acres	233,241.10 ft <sup>2</sup>
INDUSTRIAL SITE D	5.79 acres	252,400.54 ft <sup>2</sup>
INDUSTRIAL SITE E	12.75 acres	555,182.65 ft <sup>2</sup>
	51.80 acres	2,256,535.02 ft <sup>2</sup>
<b>OVERALL</b>		<b>OVERALL</b>
<b>OVERALL SITE</b>	117.90 acres	5,135,830.55 ft <sup>2</sup>
	117.90 acres	5,135,830.55 ft <sup>2</sup>

**BUILDING**

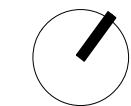
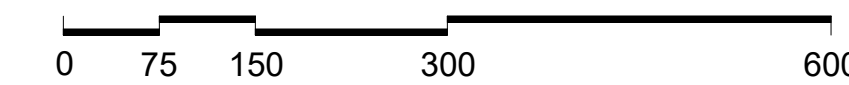
TYPE	AREA
B1 CROSS DOCK	221,317 SF
B2 REAR LOAD	100,863 SF
B3 FRONT LOAD	127,838 SF
B4 SIDE LOAD	30,000 SF
B5 REAR LOAD	68,240 SF
B6 REAR LOAD	166,400 SF
<b>TOTAL</b>	<b>714,658 SF</b>

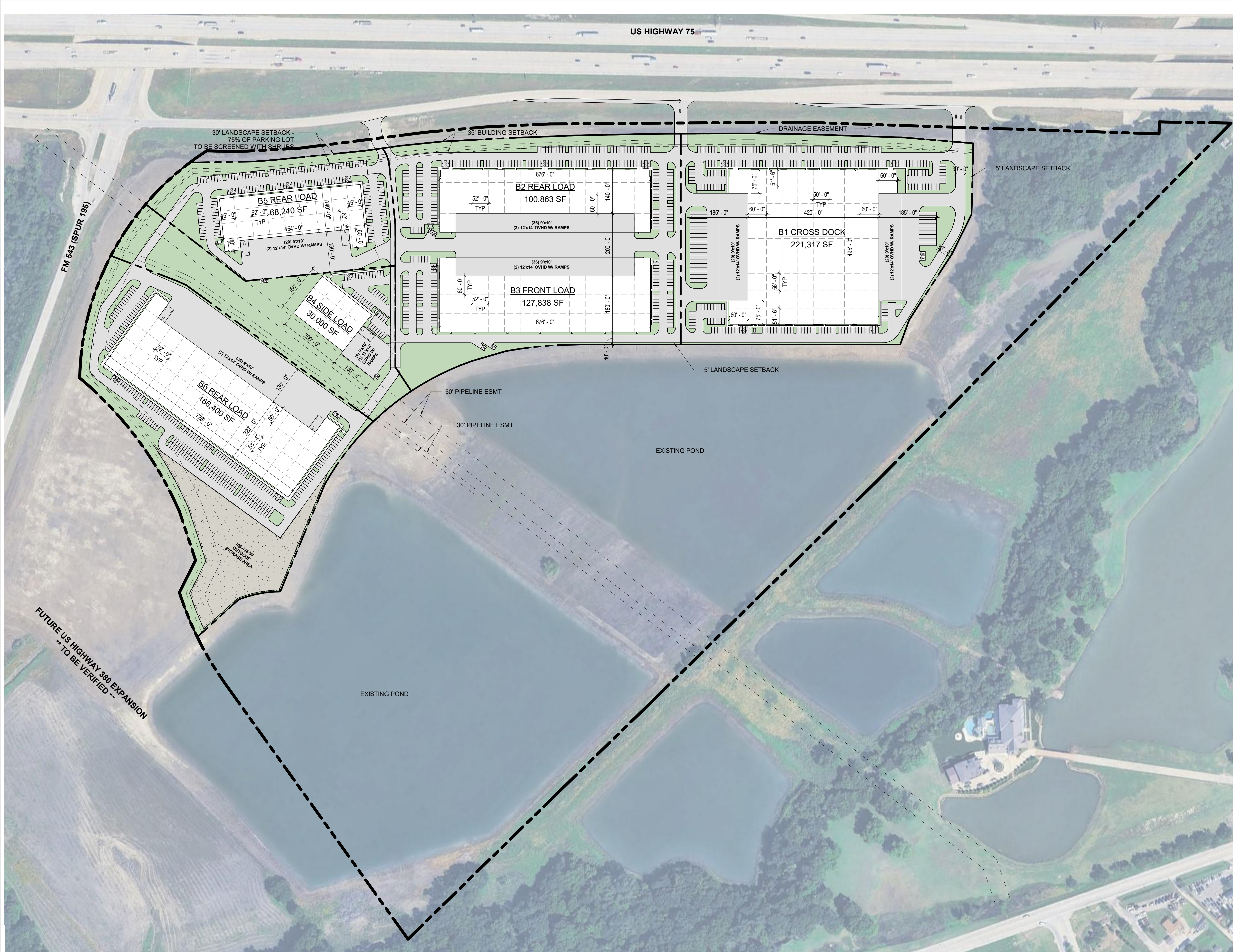
**SITE COVERAGE**

TYPE	AREA
SITE COVERAGE - INDUSTRIAL	31.6%

**PARKING COUNT**

Comments	PARKING SPACES
BUILDING 1 TRAILERS	28
BUILDING 1	259
BUILDING 2	197
BUILDING 3	106
BUILDING 4	39
BUILDING 5	161
BUILDING 6	223





**SITE SF**

TYPE	AREA	AREA (SF)
INDUSTRIAL SITE A	13.21 acres	575,512.97 ft <sup>2</sup>
INDUSTRIAL SITE B	14.70 acres	640,197.76 ft <sup>2</sup>
INDUSTRIAL SITE C	5.35 acres	233,241.10 ft <sup>2</sup>
INDUSTRIAL SITE D	5.79 acres	252,400.54 ft <sup>2</sup>
INDUSTRIAL SITE E	12.75 acres	555,182.65 ft <sup>2</sup>
	51.80 acres	2,256,535.02 ft <sup>2</sup>
<b>OVERALL</b>		<b>OVERALL</b>
<b>OVERALL SITE</b>	117.90 acres	5,135,830.55 ft <sup>2</sup>
	117.90 acres	5,135,830.55 ft <sup>2</sup>

**BUILDING**

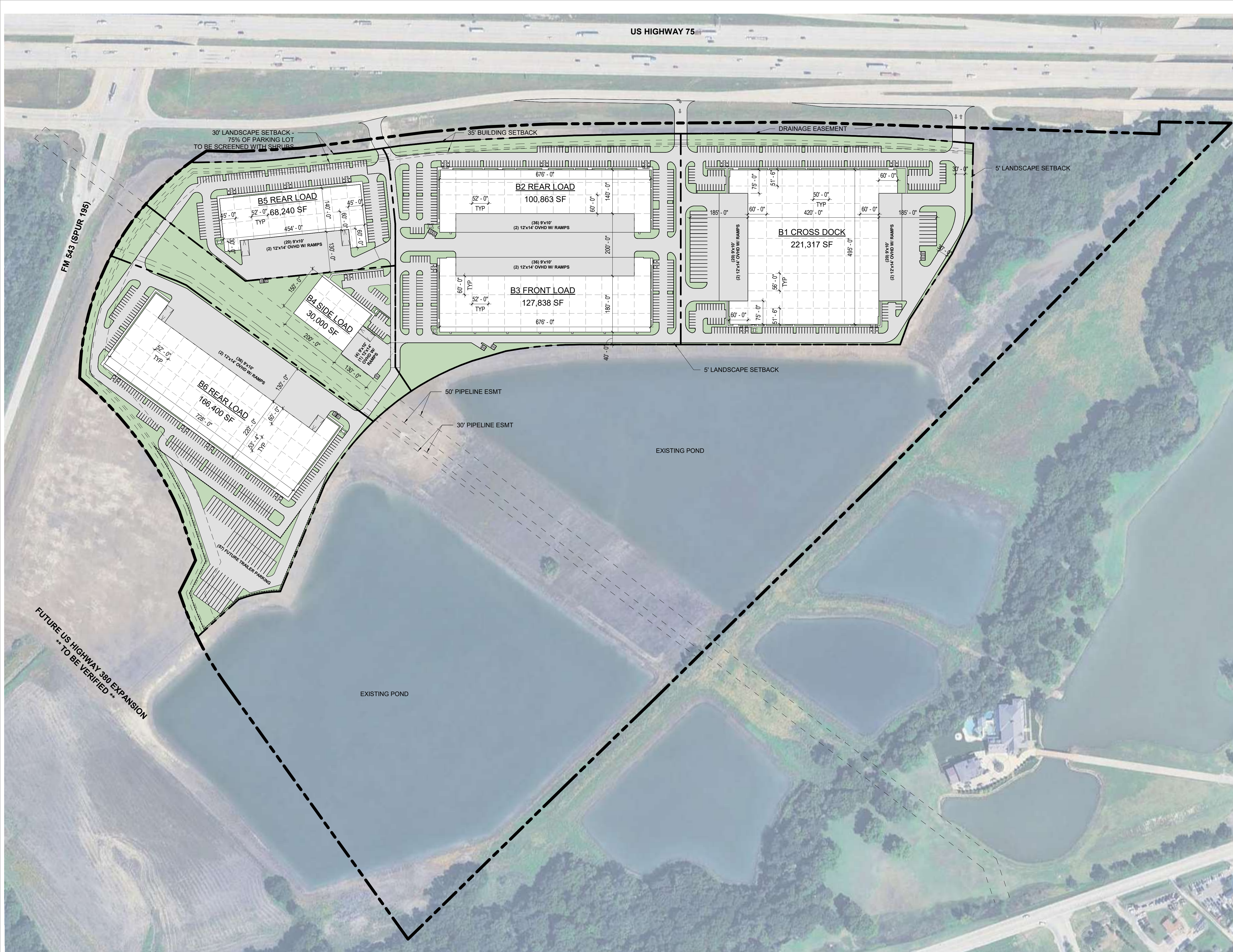
TYPE	AREA
B1 CROSS DOCK	221,317 SF
B2 REAR LOAD	100,863 SF
B3 FRONT LOAD	127,838 SF
B4 SIDE LOAD	30,000 SF
B5 REAR LOAD	68,240 SF
B6 REAR LOAD	166,400 SF
<b>TOTAL</b>	<b>714,658 SF</b>

**SITE COVERAGE**

TYPE	AREA
SITE COVERAGE - INDUSTRIAL	31.6%

**PARKING COUNT**

Comments	PARKING SPACES
BUILDING 1 TRAILERS	28
BUILDING 1	259
BUILDING 2	197
BUILDING 3	106
BUILDING 4	39
BUILDING 5	161
BUILDING 6	223



**SITE SF**

TYPE	AREA	AREA (SF)
INDUSTRIAL SITE A	13.21 acres	575,512.97 ft <sup>2</sup>
INDUSTRIAL SITE B	14.70 acres	640,197.76 ft <sup>2</sup>
INDUSTRIAL SITE C	5.35 acres	233,241.10 ft <sup>2</sup>
INDUSTRIAL SITE D	5.79 acres	252,400.54 ft <sup>2</sup>
INDUSTRIAL SITE E	12.75 acres	555,182.65 ft <sup>2</sup>
	51.80 acres	2,256,535.02 ft <sup>2</sup>
<b>OVERALL</b>		<b>OVERALL</b>
<b>OVERALL SITE</b>	117.90 acres	5,135,830.55 ft <sup>2</sup>
	117.90 acres	5,135,830.55 ft <sup>2</sup>

**BUILDING**

TYPE	AREA
B1 CROSS DOCK	221,317 SF
B2 REAR LOAD	100,863 SF
B3 FRONT LOAD	127,838 SF
B4 SIDE LOAD	30,000 SF
B5 REAR LOAD	68,240 SF
B6 REAR LOAD	166,400 SF
<b>TOTAL</b>	<b>714,658 SF</b>

**SITE COVERAGE**

TYPE	AREA
SITE COVERAGE - INDUSTRIAL	31.6%

**PARKING COUNT**

Comments	PARKING SPACES
BUILDING 1 TRAILERS	28
BUILDING 6 TRAILERS	57
BUILDING 1	259
BUILDING 2	197
BUILDING 3	106
BUILDING 4	39
BUILDING 5	161
BUILDING 6	223

