



# Sassy Car Wash

1697 W Lacey Blvd, Hanford, CA 93230

**JASON KEYZ**

888.539.9101

jason@keyzgroup.com

CalDRE #01906778

**Sassy Car Wash** | 1697 W Lacey Blvd Hanford, CA 93230**OFFERING SUMMARY**

Sale Price:	Subject To Offer
Building Size:	3,120 SF
Available SF:	
Lot Size:	1.03 Acres
Price / SF:	-
Zoning:	RC

**PROPERTY OVERVIEW**

FULL SERVICE OPERATING CAR WASH WITH REAL ESTATE INCLUDED!!

This is your rare opportunity to acquire an operating, full service car wash. Business and real estate are included in this offering.

Business is currently owner operated, but please do not disturb the operations. If you would like to schedule a tour or site visit, please either go get a car wash OR coordinate with Jason Keyz, broker for this opportunity.

Car Wash Details:

- Single Tunnel
- Full service car wash but can be converted to automated with a starting upgrade investment of as little as \$200k (and up)
- Tunnel length approximately 65-70 feet.
- 3,120 SF building
- 1.03 Acre lot

This car wash presents a prime investment OR owner-user opportunity in a thriving commercial corridor. The property is situated on a spacious lot with high visibility and easy access from Lacey Blvd, a major thoroughfare in the area.

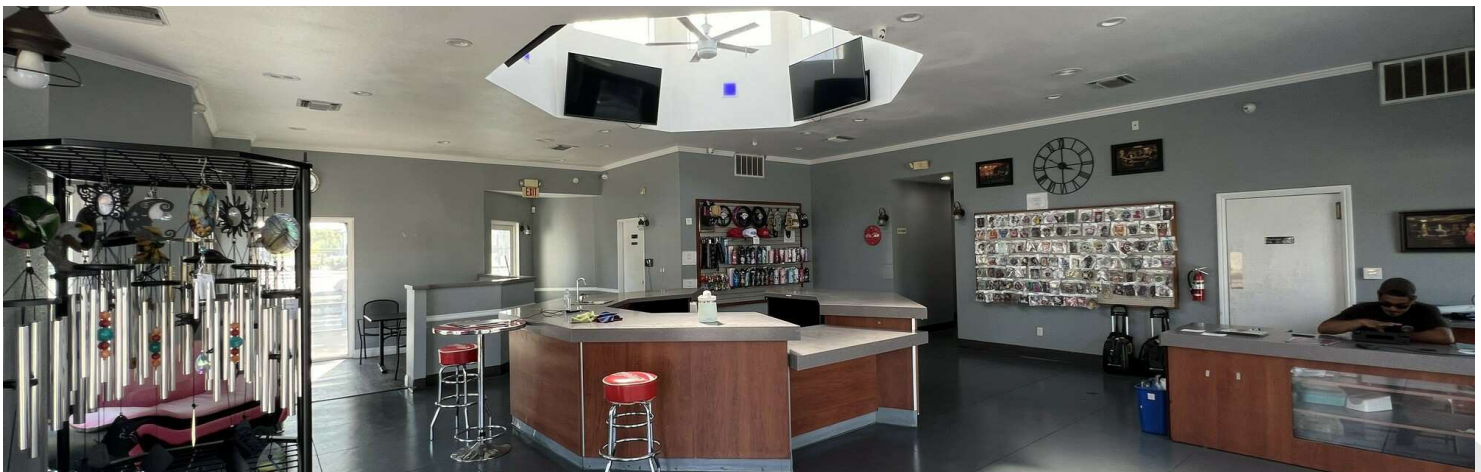
**JASON KEYZ**

888.539.9101

jason@keyzgroup.com

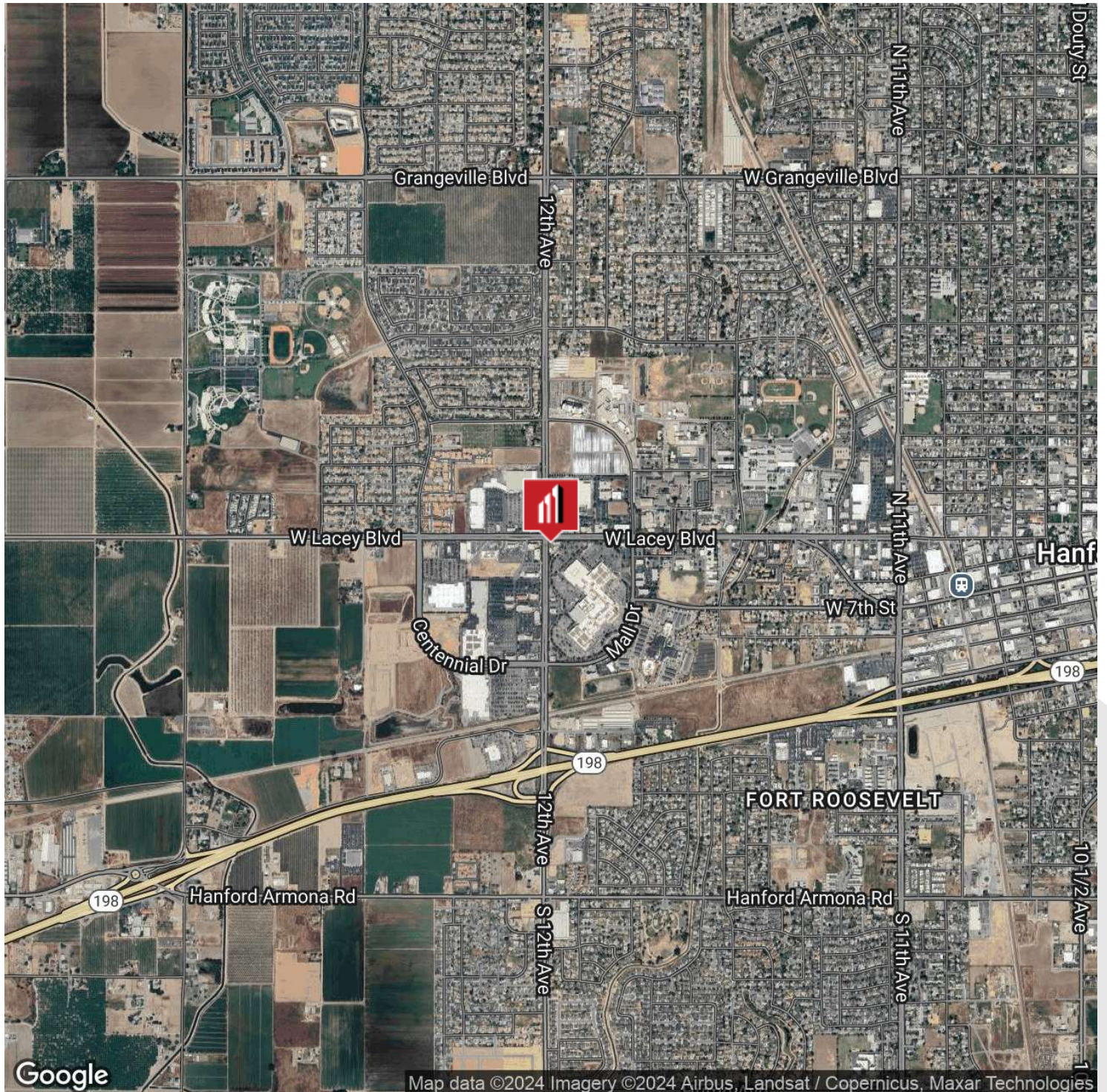
CalDRE #01906778

**Sassy Car Wash** | 1697 W Lacey Blvd Hanford, CA 93230



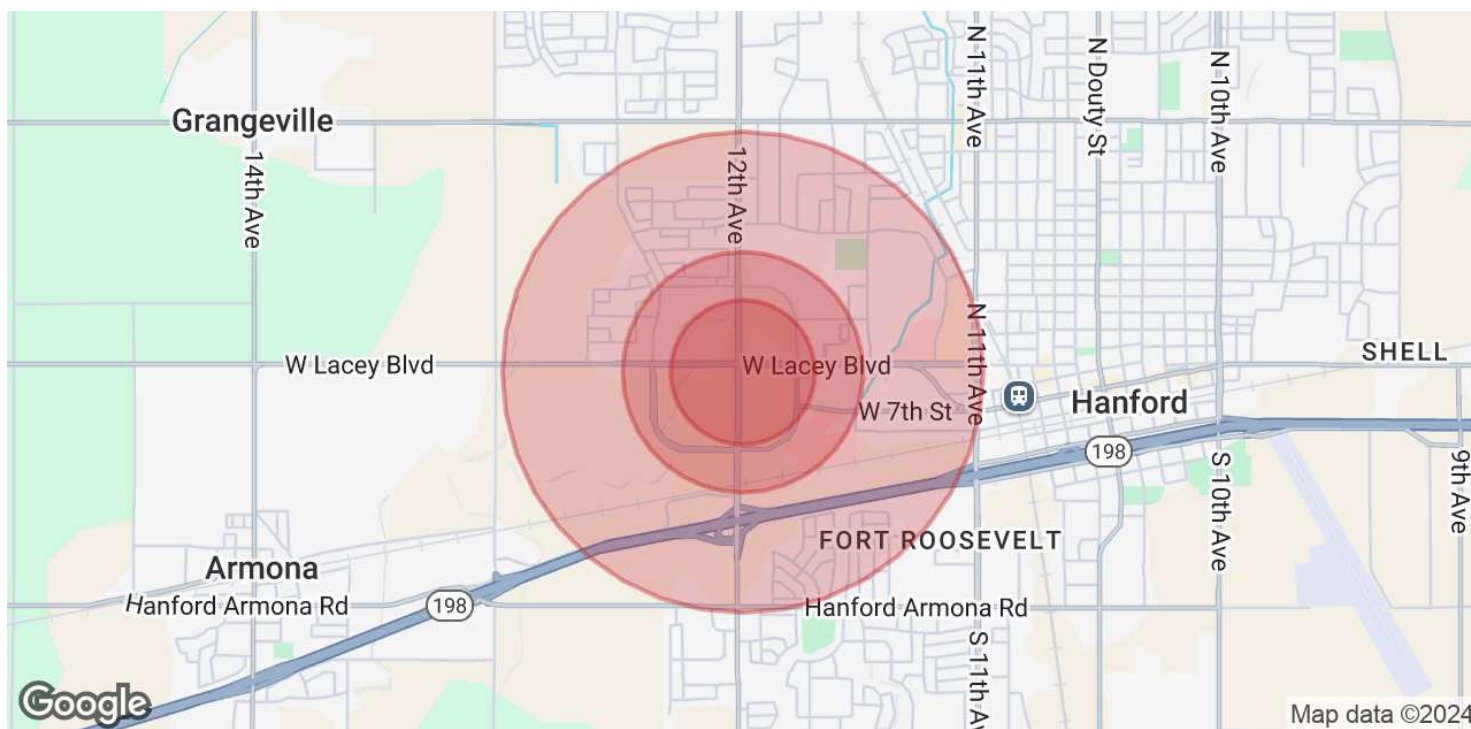
**JASON KEYZ**  
888.539.9101  
jason@keyzgroup.com  
CalDRE #01906778

Sassy Car Wash | 1697 W Lacey Blvd Hanford, CA 93230



**JASON KEYZ**  
888.539.9101  
jason@keyzgroup.com  
CalDRE #01906778

**Sassy Car Wash** | 1697 W Lacey Blvd Hanford, CA 93230



POPULATION	0.3 MILES	0.5 MILES	1 MILE
Total Population	339	1,318	8,366
Average Age	39	38	37
Average Age (Male)	37	37	36
Average Age (Female)	41	40	38

HOUSEHOLDS & INCOME	0.3 MILES	0.5 MILES	1 MILE
Total Households	96	399	2,646
# of Persons per HH	3.5	3.3	3.2
Average HH Income	\$107,569	\$104,530	\$91,667
Average House Value	\$384,454	\$379,068	\$357,209

Demographics data derived from AlphaMap

**JASON KEYZ**

888.539.9101

jason@keyzgroup.com

CalDRE #01906778