



SHEET INDEX

Sheet	Sheet Name	Drawn	Checked	Current Revision	Current Revision Date
GENERAL					
G-001	PROJECT INFORMATION	ZTM	MTB		
G-002	OUTLINE SPECIFICATION	-	-		
G-101	OCCUPANCY AND EGRESS PLAN	ZTM	MTB		
ARCHITECTURE					
A-101	ARCHITECTURAL FLOOR PLAN	ZTM	MTB		
A-102	FINISH PLAN	ZTM	MTB		
A-103	REFLECTED CEILING PLAN	ZTM	MTB		
A-104	PATIO PLAN & DETAILS	ZTM	MTB		
A-201	EXTERIOR ELEVATIONS	ZTM	MTB		
A-211	INTERIOR ELEVATIONS	ZTM	MTB		
A-212	INTERIOR ELEVATIONS	ZTM	MTB		
A-213	RESTROOM PLAN & ELEVATIONS	ZTM	MTB		
A-501	EXTERIOR DETAILS	ZTM	MTB		
A-511	PARTITION TYPES & DETAILS	ZTM	MTB		
A-512	DETAIL & WALL SECTIONS	ZTM	MTB		
A-513	DETAIL & WALL SECTIONS	ZTM	MTB		
A-514	OPENING DETAILS	ZTM	MTB		
A-515	DETAILS	ZTM	MTB		
PLUMBING					
P1	PLUMBING SPLICES, SCHEDULES & DETAILS	EBH	DRC		
P2	FLOOR PLAN - SAN & VENT	EBH	DRC		
P3	FLOOR PLAN - HW/CW & GAS	EBH	DRC		
P4	PLUMBING RISERS	EBH	DRC		
P5	PLUMBING DETAILS	EBH	DRC		
MECHANICAL					
M1	MECHANICAL PLAN	NOB	DRC		
M2	MECHANICAL ROOF PLAN	NOB	DRC		
M3	MECHANICAL SCHEDULES AND DETAILS	NOB	DRC		
M4	MECHANICAL SPECIFICATIONS	NOB	DRC		
M5	MECHANICAL SPECIFICATIONS	NOB	DRC		
MECHANICAL HOOD					
H1	HOOD DRAWING	NOB	DRC		
H2	HOOD DRAWING	NOB	DRC		
H3	HOOD DRAWING	NOB	DRC		
H4	HOOD DRAWING	NOB	DRC		
H5	HOOD DRAWING	NOB	DRC		
ELECTRICAL					
E1	ELECTRICAL LIGHTING PLAN	RA8	DRC		
E2	ELECTRICAL POWER PLAN	RA8	DRC		
E3	MECHANICAL EQUIPMENT, POWER, & FIRE ALARM PLAN	RA8	DRC		
E4	ELECTRICAL ONE-LINE DIAGRAM & SCHEDULES	RA8	DRC		
E5	ELECTRICAL SPECIFICATIONS	RA8	DRC		
KITCHEN					
K-101	EQUIPMENT LAYOUT & SCHEDULE	JMB	JMB		
Grand total: 38					

SYMBOLS LEGEND

	Scope of Project		Key Note No.		Key Note
	Aligned Buttress		Centerline		Centerline
	Area Name		Area Tag		North Arrow
	Room Name		Room Tag		Column Grid Line
	Door/Room No.		Door Tag		Level Marker
	Window Type		Window Type Tag		Spot Elevation
	Partition Configuration		Partition Tag		Elevation
	Building Section		Starting Point @ Corner		Dimension Crosshair
	Wall Section		Footprint @ Tail		Slope Indicator
	Detail Section/Callout		Change @ Head		Material Change Indicator

PROJECT GENERAL NOTES

- THE ARCHITECT SHALL BE NOTIFIED IMMEDIATELY OF ANY DISCREPANCIES BETWEEN THESE DOCUMENTS AND ANY APPLICABLE CODES BY THE AGENT INVOLVED WITH THE GOVERNING AGENCY HAVING JURISDICTION. IT IS UNDERSTOOD THAT THE "FIELD INSPECTOR" FOR SUCH AGENCY HAS FINAL AUTHORITY TO APPROVE/REAPPROVE PROJECT CONSTRUCTION AND CORRECTNESS OF ALL CODE-RELATED ITEMS.
- EACH SUBCONTRACTOR IS CONSIDERED A SPECIALIST IN THEIR RESPECTIVE FIELD OR TRADE AND SHALL NOTIFY PRIOR TO PERFORMANCE OF THE WORK. THE GENERAL CONTRACTOR AND THE ARCHITECT OF ANY WORK CALLED OUT IN THE DRAWINGS WHICH CANNOT BE FULLY GUARANTEED OR CONSTRUCTED AS DESIGNED OR DETAILED.
- THE CONTRACTOR SHALL VERIFY ALL SITE CONDITIONS AND DIMENSIONS PRIOR TO COMMENCING THE WORK AND IMMEDIATELY NOTIFY THE ARCHITECT IN WRITING OF ANY DISCREPANCIES.
- THE CONTRACTOR SHALL VERIFY ALL DIMENSIONS AND LOCATIONS OF ALL OPENINGS, BASES, AND SPECIAL PROVISIONS REQUIRED FOR EQUIPMENT, DUCTS, PIPING, CONDUITS, PUSHER HARDWARE, ETC. AND IMMEDIATELY NOTIFY THE ARCHITECT IN WRITING OF ANY DISCREPANCIES.
- GENERAL CONTRACTOR TO COORDINATE ARCHITECTURAL DRAWINGS WITH MECHANICAL AND ELECTRICAL, PLUMBING, CIVIL AND LANDSCAPE DRAWINGS.
- GENERAL CONTRACTOR TO MAINTAIN ALL EXISTING FIRE RATERS DURING DEMOLITION AND CONSTRUCTION.
- GENERAL CONTRACTOR SHALL NOT SCALE OFF DRAWINGS - CONTACT ARCHITECT FOR ALL COORDINATION ISSUES.
- GENERAL CONTRACTOR TO MAINTAIN UNOBSTRUCTED ACCESS TO ALL EXISTING DEMOLITION AND CONSTRUCTION.
- WHERE CONSTRUCTION DETAILS ARE NOT SHOWN OR NOTED FOR ANY PART OF THE WORK, DETAILS SHALL BE THE SAME AS FOR OTHER SIMILAR FIRST CLASS WORK FOR THE TRADE INVOLVED. THE ARCHITECT SHALL BE NOTIFIED IMMEDIATELY OF ANY ALTERNATE NON-STANDARD OR UNTESTED METHOD(S) PROPOSED.
- EXTERIOR SIGNAGE IS NOT IN THE SCOPE OF THIS BUILDING PERMIT.
- SEEDING CONTRACTOR TO VISIT SPACE PRIOR TO COMPLETING BID.

PROJECT DIRECTORY

BURGERFI CORPORATE BurgerFi International, LLC	Kelly MacCallum kmac@burgerfi.com (847) 504-8480	ARCHITECTURAL CONTACT: Oculus Incorporated One South Memorial Dr. Ste 1500 St. Louis, MO 63102	Jack Bove jack@oculusinc.com (314) 450-5371 (314) 450-5374
LANDLORD CONTACT: 6610 Moonstown Rd, LLC 300 Galleria Parkway, 12th Floor Atlanta, GA 30339	c/o The Shopping Center Group	ENGINEER: Cass Engineering 796 Merus Ct Fenton, MO 63026	Randy Buschale rbuschale@cassengr.com (636) 349-1600 x224

LOCATION MAP



KEY PLAN



PRELIMINARY - NOT FOR CONSTRUCTION

PROJECT INFORMATION

Project #	49920-VA01
Issue Date	12/17/2020
Scale	1 1/2" = 1'-0"
Drawn by	ZTM
Checked by	MTB

G-001

CONCEALED SPACE FIRE PROTECTION REQUIREMENTS

- WHERE REQUIREMENTS OF THE FASTEST BUILDING CONSTRUCTION CLASSIFICATION DO NOT PERMIT COMBUSTIBLE MATERIALS IN CONCEALED SPACES (INCLUDING STUD CAVITIES AND INTERSTITIAL SPACE ABOVE CEILING), THE RESTAURANT INTERIOR CONSTRUCTION OF THIS SHALL CONFORM TO THE STANDARDS.
- WHERE EXISTING COMBUSTIBLE MATERIALS OCCUR WITHIN, OR FACING EXISTING OR NEWLY CREATED CONCEALED SPACES (INCLUDING STUD CAVITIES AND THE INTERSTITIAL SPACE ABOVE CEILING), THE EXPOSED SURFACES OF SUCH MATERIALS SHALL BE PROTECTED BY ONE OF THE FOLLOWING METHODS:
 - MATERIALS SHALL BE CONTINUOUSLY PROTECTED BY A 5/8" LAYER OF GYP BD WITH ALL JOINTS TAPED AND MUDDED.
 - MATERIALS SHALL BE CONTINUOUSLY PROTECTED BY A PAINTED COATING PROVIDING A FLAME SPREAD INDEX OF 25 OR LESS, AND A SMOKE DEVELOPMENT INDEX OF 50 OR LESS, WHEN TESTED PER ASTM E 84. SUCH COATING MATERIAL SHALL BE SUBMITTED TO AND APPROVED BY LOCAL BUILDING & FIRE OFFICIALS PRIOR TO APPLICATION, AND SHALL BE APPLIED IN STRICT ACCORDANCE WITH MFR'S INSTRUCTIONS.
- REGARDLESS OF BUILDING CONSTRUCTION CLASSIFICATION, ALL NEW MATERIALS INSTALLED WITHIN, FACING OR EXPOSED TO CONCEALED SPACES (INCLUDING STUD CAVITIES AND THE INTERSTITIAL SPACE ABOVE THE LAY IN CEILING) SHALL BE NON-COMBUSTIBLE WITH A FLAME SPREAD INDEX OF 25 OR LESS, AND A SMOKE DEVELOPMENT INDEX OF 50 OR LESS, WHEN TESTED PER ASTM E-84. ANSUL T23. SUCH MATERIALS INCLUDE, BUT ARE NOT LIMITED TO, FRAMING, BASIC WALL SHEATHING, WALL BLOCKING (EXCEPT WHERE PERMITTED BY CODE EXCEPTED), DUCTWORK, PIPING, CONDUIT, CABLEING, ETC.
- WHERE EXISTING COMBUSTIBLE MATERIALS OCCUR WITHIN, FACING OR EXPOSED TO EXISTING OR NEWLY CREATED CONCEALED SPACES (INCLUDING STUD CAVITIES AND THE INTERSTITIAL SPACE ABOVE CEILING), THE EXPOSED SURFACES OF SUCH MATERIALS SHALL BE PROTECTED BY ONE OF THE FOLLOWING METHODS:
 - MATERIALS SHALL BE CONTINUOUSLY ENCLOSED AND PROTECTED BY A LAYER OF 5/8" GYP BD WITH ALL JOINTS TAPED AND MUDDED.
 - MATERIALS SHALL BE CONTINUOUSLY PROTECTED BY A PAINTED COATING PROVIDING A FLAME SPREAD INDEX OF 25 OR LESS, AND A SMOKE DEVELOPMENT INDEX OF 50 OR LESS, WHEN TESTED PER ASTM E 84 + ANSUL T23. SUCH COATING MATERIAL SHALL BE SUBMITTED TO AND APPROVED BY LOCAL BUILDING & FIRE OFFICIALS PRIOR TO APPLICATION, AND SHALL BE APPLIED IN STRICT ACCORDANCE WITH MFR'S INSTRUCTIONS FOR OBTAINING THE ABOVE STATED SURFACE BURNING CHARACTERISTICS.
- NEW OR EXISTING FOAM PLASTIC INSULATION SHALL BE PROTECTED FROM THE BUILDING INTERIOR (INCLUDING THE INTERSTITIAL SPACE ABOVE THE LAY IN CEILING) BY A 15 MINUTE THERMAL BARRIER, EQUIVALENT TO 1/2" GYP BD.
- FIRE BLOCKING IN STUD CAVITIES: WHEN THE ABOVE CONDITIONS ARE MET, FIRE BLOCKING IN STUD CAVITIES AT THE CEILING PLANE IS NORMALLY EXEMPT BY BUILDING AND FIRE CODES. NOTWITHSTANDING THE ABOVE, THE CONTRACTOR SHALL CONFIRM FIRE BLOCKING REQUIREMENTS WITH LOCAL BUILDING AND FIRE OFFICIALS, AND SHALL PROVIDE ALL BLOCKING AS RECD BY LOCAL AUTHORITIES.
- SPRINKLER SYSTEM DESIGN REQUIREMENTS: WHEN THE ABOVE CONDITIONS ARE MET, FIRE SPRINKLER COVERAGE IN NON-COMBUSTIBLE STRUCTURAL SPACE ABOVE THE CEILING (I.E. THE INTERSTITIAL SPACE) IS NORMALLY NOT RECD. NOTWITHSTANDING THE ABOVE, FIRE SPRINKLER COVERAGE ABOVE THE CEILING SHALL BE PROVIDED WHERE RECD BY THE FIRE PROTECTION ENGINEER OR THE LOCAL BUILDING OR FIRE OFFICIAL.

EXIT ACCESS TRAVEL DISTANCES

Path ID	Common Path Distance	Allowable Common Path	Actual Travel Distance	Allowable Travel Distance
COMMON PATH	82'-2"	75'-0"	NOT APPLICABLE	NOT APPLICABLE
TOTAL TRAVEL DISTANCE	NOT APPLICABLE	NOT APPLICABLE	70'-7"	200'-0"

OCCUPANCY DATA, INTERIOR (IBC 1004.2.1)

RM #	ROOM NAME	AREA	FUNCTION OF SPACE	LOAD FACTOR	OCCUPANT LOAD
101	DINING	988 SF	ASSEMBLY UNCONCENTRATED	15	66
102	SERVICE LINE	144 SF	COMMERCIAL KITCHEN	200	1
103	KITCHEN	497 SF	COMMERCIAL KITCHEN	200	3
104	OFFICE	35 SF	BUSINESS USES	100	1
105	UTILITY	221 SF	COMMERCIAL KITCHEN	200	2
106	WALK IN COOLER	83 SF	STORAGE	300	1
107	RESTROOM	56 SF	UNOCCUPIED	0	0
108	RESTROOM	56 SF	UNOCCUPIED	0	0
109	CLOSET	11 SF	STORAGE	300	1
110	CORRIDOR	62 SF	UNOCCUPIED	0	0
Grand total: 10		2155 SF			75

OCCUPANCY DATA, EXTERIOR (IBC 1004.2.1)

RM #	ROOM NAME	AREA	FUNCTION OF SPACE	LOAD FACTOR	OCCUPANT LOAD
111	EXTERIOR SEATING	268 SF	ASSEMBLY UNCONCENTRATED	15	18
112	PATIO	240 SF	ASSEMBLY UNCONCENTRATED	15	16
Grand total: 2		508 SF			34

GRAND TOTAL OCCUPANTS - 109

NOTE: AREA SQUARE FOOTAGE SHOWN ARE FOR THE BUILDING CODE OFFICIAL'S USE AND REVIEW ONLY. AREA CALCULATIONS SHOWN NOT RELATED TO TENANT LEASING INFORMATION.

PLUMBING FIXTURE SCHEDULE

NAME	WATERCLOSETS			LAVATORIES		DRINKING FOUNTAINS	
	MALE	FEMALE	URINALS	MALE	FEMALE	REG.	ACC.
REQUIRED	1	1	0	1	1	0	0
SHOWN	1	1	0	1	1	0	0

*PER SECTION 410.4 OF THE IFC: WHERE WATER IS SERVED FOR FREE BY RESTAURANTS, DRINKING FOUNTAINS SHALL NOT BE REQUIRED.

BUILDING CODE SUMMARY

THESE DRAWINGS INCLUDE THE INFORMATION AND SPECIFICATIONS FOR THE ARCHITECTURAL, MECHANICAL, ELECTRICAL AND PLUMBING SCOPE OF WORK FOR AN INTERIOR ALTERATION OF AN EXISTING SPACE FOR A GOURMET BURGER RESTAURANT.

BUILDING DATA:

BUILDING CODE: YORK COUNTY, VA
AGENCY/JURISDICTION: 2015 VIRGINIA CONSTRUCTION CODE
BUILDING CODE: 2014 NATIONAL ELECTRIC CODE
 2015 VIRGINIA MECHANICAL CODE
 2015 VIRGINIA PLUMBING CODE
 2015 VIRGINIA FUEL GAS CODE
 2015 VIRGINIA ENERGY CONSERVATION CODE

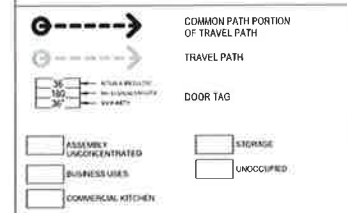
TYPE OF WORK:

INTERIOR FITOUT
EXISTING CONSTRUCTION TYPE: RB
TOTAL NUMBER OF FLOORS: ONE (1)
NUM. FLOORS ABOVE GRADE: AT GRADE
USE/OCCUPANCY GROUP: A-2 (ASSEMBLY)
SPRINKLER SYSTEM: NON-SPRINKLERED

EXIT REQUIREMENTS

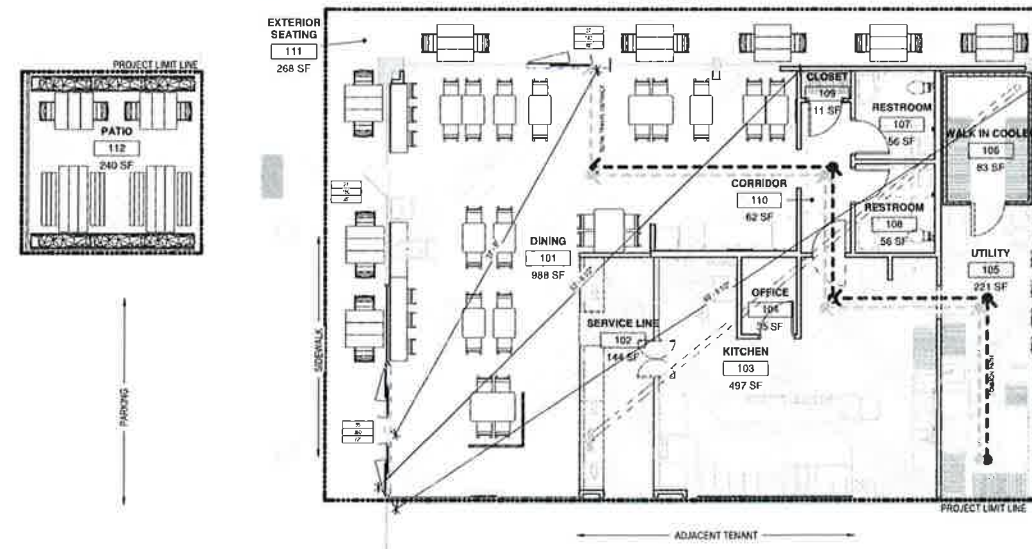
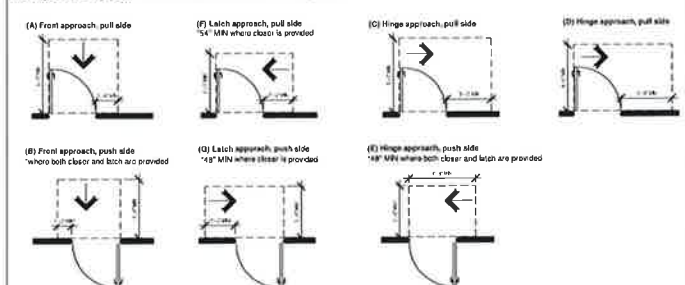
	NON-SPRINKLERED
REQUIRED NUMBER OF EXITS	2
NUMBER OF EXITS SHOWN ON PLANS	2
DINING AREA REQUIRED DISTANCE BETWEEN EXIT DOORS: ACTUAL DISTANCE BETWEEN EXIT DOORS	53' - 8 1/2" / 2 = 26' - 9 1/4" 37' - 8"
OVERALL REQUIRED DISTANCE BETWEEN EXIT DOORS: ACTUAL DISTANCE BETWEEN EXIT DOORS	69' - 8 1/2" / 2 = 34' - 10 1/4" 37' - 8"
MAXIMUM DEAD END CORRIDOR DEPTH	20'-0"

LEGEND



REQUIRED DOOR CLEARANCES

Minimum Clearances at Swinging Doors (from 2018 CFR Part 38, ADA Standards for Accessible Design, Figure 701)



S1 OCCUPANCY/EGRESS PLAN

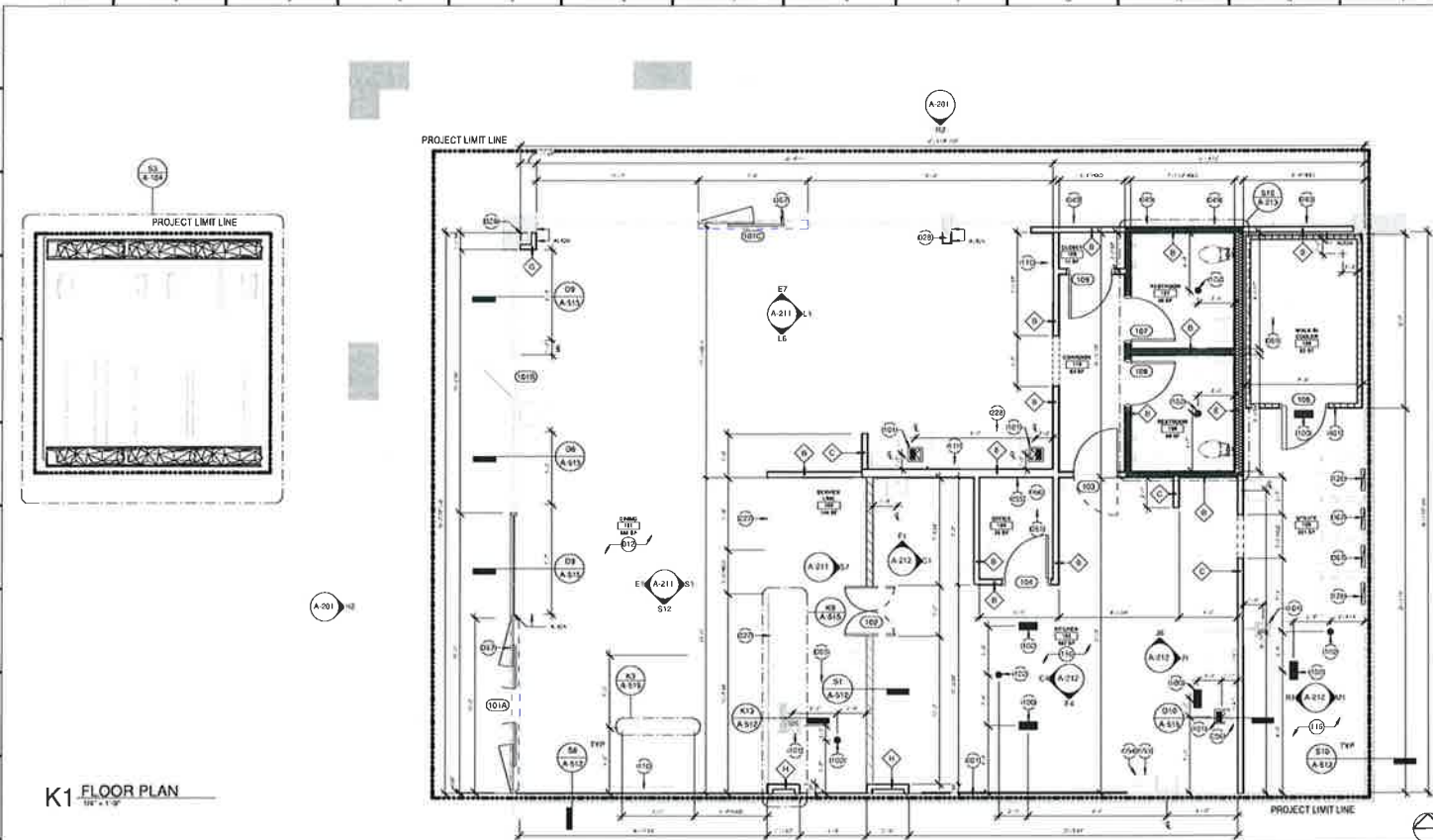


PRELIMINARY - NOT FOR CONSTRUCTION

OCCUPANCY AND EGRESS PLAN

Project # 49920-VA01
 Issue Date 12/7/2020
 Scale As indicated
 Drawn by ZTM
 Checked by MTB

G-101



SHEET NOTES

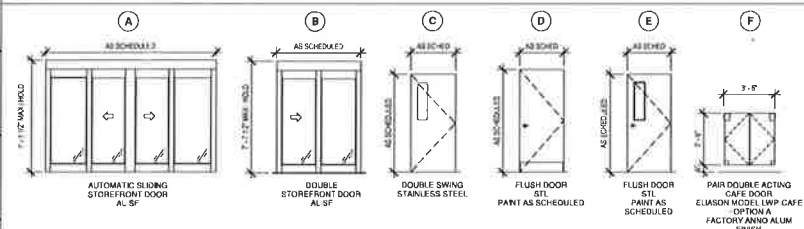
- ALL WALL MOUNTED FIXTURES WILL REQUIRE BLOCKING. ALL WOOD BLOCKING TO BE FIRE RETARDANT TREATED WOOD.
- REFER TO FINISHES LEGEND ON FINISH PLAN SHEET FOR FINISH DESIGNATIONS.
- REFER TO FINISH SCHEDULE ON FINISH PLAN SHEET AND RCP FOR CEILING TYPES
- REFERENCE PARTITION TYPES & DETAILS SHEET FOR WALL ASSEMBLIES.

KEYNOTES

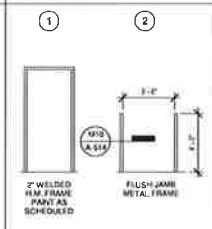
- EXISTING DEMISING WALL TO REMAIN. DEMISING WALL TO MAINTAIN A 1 HOUR FIRE RATING. VIF
- A SIGN CLEARLY STATING THAT SMOKING IS PROHIBITED SHALL BE CONSPICUOUSLY POSTED BY THE BUILDING OWNER, OPERATOR, MANAGER, OR OTHER PERSON IN CONTROL, IN EVERY PUBLIC PLACE AND PLACE OF EMPLOYMENT. NO SMOKING SIGNS OR THE INTERNATIONAL "NO SMOKING" SYMBOL, CONSISTING OF A PICTORAL REPRESENTATION OF A BURNING CIGARETTE, ENCLOSED IN A RED CIRCLE WITH A RED BAR ACROSS IT SHALL BE POSTED.
- EXISTING STRUCTURAL COLUMN TO REMAIN.
- APPLY BLACK OUT FILM TO INTERIOR SIDE OF STOREFRONT. COORDINATE ANY ADDITIONAL GRAPHICS WITH OWNER.
- INSTALL FLOOR SAFE IN OFFICE. OBTAIN SAFE FROM OWNER AND COORDINATE LOCATION.
- PROVIDE 5 LB TYPE K FIRE EXTINGUISHER IN KITCHEN WITHIN A DISTANCE OF 10 FT. FROM THE MAIN COOKLINE. MOUNT EXTINGUISHER ON A WALL HOOK WITH SOLID BLOCKING, WITH TOP AT 4' AFF.
- PROVIDE MANUAL PULL STATION FOR SHUNT TRIP DISCONNECT ON HOOD SUPPRESSION SYSTEM. SHUNT TRIP SHALL DISCONNECT GAS SUPPLY AND ELECTRICAL POWER TO ALL APPLIANCES UNDER THE COOKLINE HOODS. REFER TO HOOD SHOP DRAWINGS FOR ADDITIONAL FAN CONTROL SEQUENCE INTERCONNECTED WITH SHUNT TRIP.
- COMMUNICATIONS TERMINAL BOARD, FULL WIDTH OF ROOM FROM 4' AFF TO RAFT. REF. ELEC.
- PROVIDE HORIZONTAL STUD WALL BLOCKING AND VIBRATION DAMPING WALL MOUNTING PLATE AT POTATO SLICER. REFER TO DETAIL D-10A-S15.
- OFFICE DESK, 30" PLASTIC LAMINATE. CUT TO FIT WIDTH OF OFFICE, WITH FORMICA CLOUD/ROMANO FINISH. COUPLER TOP @ 3" AFF.
- NEW ELECTRICAL PANEL - SEE ELECTRICAL DRAWINGS FOR ADDITIONAL INFORMATION.
- UNDER-SLAB BEER LINE. REF PLUMBING AND DETAIL WALL SECTIONS INFILL SLAB CUT OUT.
- TRENCH DRAIN. REF PLUMBING.
- FLOOR SINK. REF PLUMBING.
- FLOOR DRAIN. REF PLUMBING.
- LCD MONITOR AND MOUNTING BRACKET, OSCI. COORDINATE TO SIZE AND MOUNTING BRACKET SPECIFICATION W/ OWNER.
- REFER TO PLUMBING DRAWINGS FOR FLOOR DRAIN SINK/CLEAN OUT LOCATIONS.
- NEW ELECTRICAL PANEL. TO REPLACE EXISTING PANEL. REFERENCE ELECTRICAL DRAWINGS FOR MORE INFORMATION.
- FRONT COUNTER BY OTHERS.
- CUSTOM CABINET BY OTHERS.
- GC TO PROVIDE AND INSTALL NEW AUTOMATIC SLIDING DOOR AND HEADER/WALL CONSTRUCTION ABOVE WITH BREAK METAL CLOSURE STRAPS AT SIDES OF FRAME AS REQUIRED. GC TO COORDINATE REQUIREMENTS WITH LAMB AND DOOR MANUFACTURER. GC TO PROVIDE POWER FOR NEW AUTOMATIC DOOR SYSTEM. SEE ELECTRICAL DRAWINGS FOR ADDITIONAL INFORMATION.
- GC TO VERIFY WALK-IN DIMENSIONS WITH VENDOR AND MAINTAIN 2" BETWEEN WALK-IN AND ADJACENT WALLS.

K1 FLOOR PLAN
1/8" = 1'-0"

DOOR TYPES



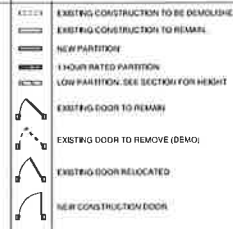
FRAME TYPES



DOOR ABBREVIATIONS

- AL SF CO FLUSH
- FR 45
- D GLASS
- GLD-1
- HM
- HD
- HW
- MFR
- NCD
- OSP
- PWL
- PT
- S S
- S S KD
- STL
- STL KD
- STL W
- TC
- TS
- WG
- WD
- WC
- WD SC

WALL AND DOOR LEGEND



DOOR SCHEDULE

#	WIDTH	HEIGHT	THICKNESS	TYPE	DOOR			FRAME			COMMENTS			
					MATERIAL	FINISH	OPERATION	HARDWARE	HEAD	JAMB(S)		TYPE	MATERIAL	FINISH
101A	12'-0"	7'-7 1/2"	0'-1 3/4"	A	AL-SF	MATCH EXISTING	SLIDER W/ EMERGENCY BREAKOUT SO-SX-SX-SO W/ ELECTRIC OPERATOR	HW1	MATCH EXIST	MATCH EXIST	-	AL-SF	MATCH EXIST	
101B	3'-0"	7'-0"	0'-1 3/4"	EXIST	EXIST	EXISTING	EXIST	HW2	EXIST	EXIST	-	EXIST	EXIST	
101C	7'-6"	7'-7 1/2"	0'-1 3/4"	B	AL-SF	MATCH EXISTING	SLIDER W/ EMERGENCY BREAKOUT SO-SX-SX-SO W/ ELECTRIC OPERATOR	HW1	MATCH EXIST	MATCH EXIST	-	AL-SF	MATCH EXIST	
102	3'-6"	3'-6"	0'-1 1/2"	F	ALUM	FACTORY SATIN ANNO ALUM	DOUBLE SWING	-	-	M10A-S14	2	MTL	PT-2	
103	3'-0"	7'-0"	0'-0 1/16"	C	ALUM	STAINLESS STEEL	PUSH/PUSH DOUBLE SWING	HW5	F1A-S14	J1, M1A-S14	1	SS-1	SATIN CLEAR ANOD	LWP3-RHMBURGER
104	3'-0"	7'-0"	0'-1 3/4"	E	ALUM	PT-2	SWING W/ OFFICE LOCKSET	HW4	C1A-S14	C1A-S14	1	STL-W	PT-2	
105	3'-0"	7'-0"	0'-4"	MFG	MFG	PT-2	PUSH/PULL	HW3	MFG	MFG	1	MFG	MFG	
106	3'-0"	7'-0"	0'-1 3/4"	D	STL	PT-2	RESTROOM LOCKSET	HW3	F1A-S14	J1, M1A-S14	1	STL-W	PT-2	
107	3'-0"	7'-0"	0'-1 3/4"	D	STL	PT-2	RESTROOM LOCKSET	HW3	F1A-S14	J1, M1A-S14	1	STL-W	PT-2	
108	3'-0"	7'-0"	0'-1 3/4"	D	STL	PT-2	STORAGE LOCKSET	HW6	F1A-S14	J1, M1A-S14	1	STL-W	PT-2	
109	3'-0"	7'-0"	0'-1 3/4"	D	STL	PT-2	STORAGE LOCKSET	HW6	F1A-S14	J1, M1A-S14	1	STL-W	PT-2	

HARDWARE GROUPS

- HW1 STOREFRONT SLIDING DOOR:**
 - ELECTRIC OPERATOR, PANIC EXIT MANUAL BREAKOUT
 - ROLL-THRU ADA SADDLE THRESHOLD
- HW2 STOREFRONT DOORS:**
 - ENTRANCE LOCK W/ PANIC EXIT TOUCH PAD FULL WIDTH. EQUIV TO VON DUPRIN TOUCHBAR SERIES 88
 - ROLL-THRU ADA SADDLE THRESHOLD
 - AUTO-CLOSER, ANSI A156.4, GRADE 1, EQUIV TO LCN 4041
- HW3 RESTROOM DOORS:**
 - ADA LEVER HARDWARE EQUIV TO SCHLAGE RHODES
 - TURNKNOCK LOCKSET, ANSI A156.4, GRADE 1, EQUIV TO SCHLAGE NDS3P
 - HARDWARE FINISH #626 BRUSHED S/S
 - AUTO-CLOSER, ANSI A156.4, GRADE 1, EQUIV TO LCN 4041
 - WALL-BUMPER, GLYNN JOHNSON 50C AT HANDLE
 - PLATES, 8" H x 16" GA FLUSH S/S KICK PLATE AT BOTH SIDES OF DOOR
- HW4 OFFICE DOOR:**
 - ADA LEVER HARDWARE EQUIV TO SCHLAGE RHODES
 - TURNKNOCK LOCKSET, ANSI A156.4, GRADE 1, EQUIV TO SCHLAGE NDS3P
 - HARDWARE FINISH BRUSHED S/S
 - WALL-BUMPER, GLYNN JOHNSON 50C AT HANDLE
 - KEY LOCK
 - VISION LITE WITH INTEGRAL MTRN INS EQUV TO ACTHAR AIR LOWERS W/ELFZ63B, 7" X 30" MAX 43" AFF TO BOTTOM EDGE OF GLASS
- HW5 DOUBLE ACTING CAFE DOOR:**
 - DOOR HARDWARE INCLUDED WITH ELIASON LWP-CAFE DOOR (180 DEGREE SPRING HIGES)
 - DOOR LEAF OPTION A
 - JAMBS MUST BE PLUMB AND SQUARE. MINIMUM DOUBLE 2" X 4" WOOD CONSTRUCTION OR EQUIVALENT. HOLLOW METAL JAMBS SHOULD BE REINFORCED AT HINGE LOCATION
- HW6 STORAGE DOORS:**
 - ADA LEVER HARDWARE EQUIV TO SCHLAGE RHODES
 - TURNKNOCK LOCKSET, ANSI A156.4, GRADE 1, EQUIV TO SCHLAGE NDS3P
 - HARDWARE FINISH #626 BRUSHED S/S
 - WALL-BUMPER, GLYNN JOHNSON 50C AT HANDLE



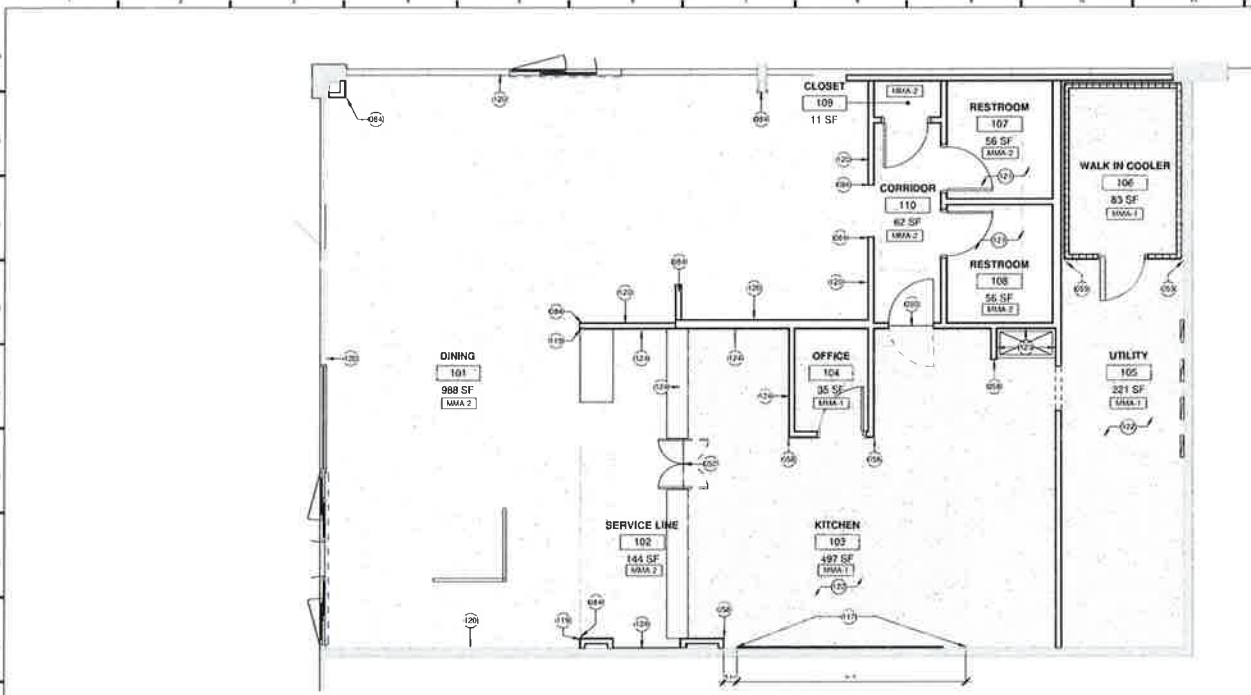
Burger-Fi - Williamsburg
6513 Montross Rd, Suite F-G
Williamsburg, VA 23188

PRELIMINARY - NOT FOR CONSTRUCTION

ARCHITECTURAL FLOOR PLAN

Project # 48520-VA01
Issue Date 12/1/2020
Scale As indicated
Drawn by ZTM
Checked by MTB

A-101



SHEET NOTES

- ALL INTERSECTIONS OF FLOOR FINISH MATERIALS SHALL BE LOCATED DIRECTLY UNDER CENTER OF DOOR, WHERE OCCURS. U O N INFORMATION
- REFERENCE FINISH SCHEDULES ON EACH SHEET FOR MORE INFORMATION
- CLEAN, PREP & PRIME ALL SURFACES PRIOR TO PAINTING. PAINT SHALL BE ROLLED OR SPRAYED, W/ NO VISIBLE ROLLER MARKS OR SHEEN STREAKS. EXTEND EACH COAT ACROSS FULL, UNBROKEN SURFACES (EDGE TO EDGE, TOP TO BOTTOM) WITH NO PARTIALLY COATED SURFACES.
- FILL ALL JOINTS AND SMALL CRACKS WITH SEALANT, AND PROVIDE FILLET SEALANT BEADS ALONG ALL EDGES OF THIN FINISH MATERIALS. PROVIDE THE FOLLOWING CAULKING SYSTEMS:
 - GENERAL CAULKING: MIL WORK & TRIM: S-W POWERHOUSE 1100A SILICONIZED ACRYLIC LATEX SEALANT
 - BASE AND BACKBID ADHESIVE FOR PREFINISHED ITEMS: SILICONE ADHESIVE
 - JOINTS IN PREFINISHED WOODWORK: CLEAR SILICONE
- ALL SEALANT, ADHESIVE, CAULKING, ETC. USED INSIDE THE BUILDING SHALL BE ZERO VOC TYPE, WITH NO FORMALDEHYDE.

SUPPLIERS

FRP SUPPLIER
Anita Craig
acraig@Marble.com
Marble
1 Marble Drive
Dover, OH 44622
Office: (330) 260-7621

ALUMINUM MESH PANELS SUPPLIER
McNichols CO.
Ashley Nikin
ashley_nikin@mcnichols.com
McNichols Co.
1880 Shiloh Road NW, Bldg 6 #300
Kennesaw, GA 30144-8427
Office: (800) 237-3829 x5533

NATIONAL METAL SUPPLIER
Deborah Hart
deborah.hart@mcnichols.com
McNichols Co.
2502 North Rocky Point Drive, Suite 750
Tampa, FL 33607-1453
Office: (813) 282-8828 x2502

ANDY MILLS, VP of Sillal Restaurants and Hospitality
Sillal America
(770) 830-1404 (C)
(855) 297-3567 (C)
andy.mills@sillalamerica.com

ALL WOOD CONTACT INFO
Tapani Pekkala
(651) 581-5542
www.allwoodindustrials.com

KEYNOTES

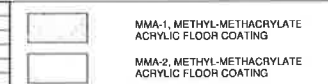
- 150 TRANSITION BETWEEN FLOOR SYSTEMS SHALL OCCUR AT DOORWAYS, WITH TRANSITION POINT ALIGNED WITH C.L. OF DOOR IN CLOSED POSITION, WHERE A DIFFERENCE IN THICKNESS OCCURS BETWEEN FLOOR SYSTEMS, USE TRANSITION STRIP.
- 158 ALL OUTSIDE CORNERS IN KITCHEN WALL TO HAVE 2X2X1/8 GA STAINLESS STEEL CORNER PROTECTION ANGLES, EXTENDING FROM TOP OF COVE BASE TO CEILING LINE. PROVIDE CORNER PROTECTION AT EVERY OUTSIDE CORNER. (ALTHOUGH NOT SHOWN ON PLAN IN EVERY LOCATION)
- 159 CLOSE OFF CORNERS OF WALK-IN COOLER BOX TO ADJACENT WALLS, USING 1/4" GA STAINLESS STEEL CLOSURE TRIM, EXTENDING FROM FLOOR TO CEILING.
- 164 TRIM OUTSIDE CORNERS W/ 1/2"X2X1/8" FULL HEIGHT, ATTACH BOTH LEGS @ 1/2" W/ #10 COATED STEEL HEX HEAD LAG SCREWS, UNIFORMLY SPACED TO ALIGN W/ WC-1 BOLTS AND W/ #4 SCREWS.
- 117 SS-1 HOOD BACKSPASH BY HOOD VENDOR. GO TO COORDINATE W/ VENDOR TO SUPPLY SS PANELS TO EXTEND 18" PAST HOOD, EACH SIDE.
- 118 POINT OF FINISH TRANSITION
- 120 WC-1 TO 4'-4" AFF W/ #1 AFF W/ #1 ABOVE STOREFRONTS WHERE APPLICABLE. PAINT PT-4 ABOVE W/ #1 TO BOTTOM OF DECK.
- 121 WC-3 ON RESTROOM WALLS.
- 122 FRP ON ALL KITCHEN AND BACK OF HOUSE WALLS WITH THE EXCEPTION OF THE COOKLINE WALL. SS-1 ON COOKLINE WALL.
- 123 MMA-1 TO 2'-0" AFF AT HOP SINK.
- 124 FRP-T BEHIND SERVICE LINE.

J1 FINISH FLOOR PLAN

ROOM FINISH SCHEDULE

#	NAME	AREA	FINISH	FLOORING	WALLS	CEILING	COMMENTS
101	DINING	988 SF	FB-1	MMA-2	WC-1 TO 4'-4" AFF. W/ #1 ABOVE	OPEN	
102	SERVICE LINE	144 SF	MMA-1	MMA-2	FRP-T (INC. LUGS INTEGRAL BASE)	SC-3	
103	KITCHEN	497 SF	MMA-1	MMA-1	FRP, SS-1 AS NOTED, MMA-1 TO 18" AFF AT HOP SINK	SC-2	
104	OFFICE	35 SF	MMA-1	MMA-1	FRP	SC-3	
105	UTILITY	221 SF	MMA-1	MMA-1	FRP	SC-2	
106	WALK IN COOLER	83 SF	MMA-1	MMA-1	N/A	N/A	
107	RESTROOM	56 SF	MMA-1	MMA-2	WC-3	SC-4	
108	RESTROOM	56 SF	MMA-1	MMA-2	WC-3	SC-4	
109	CLOSET	11 SF	MMA-1	MMA-2	FRP	SC-3	
110	CORRIDOR	62 SF	FB-1	MMA-2	WC-1 TO 4'-4" AFF. W/ #1 ABOVE	SC-1	
111	EXTERIOR SEATING	288 SF	N/A				
112	PATIO	240 SF	N/A				

FLOOR FINISH LEGEND



FINISH SCHEDULE

WALLS	PAINT	BASE	FLOORING
WP-1 INTERIOR WOOD PANELING: HORIZONTALLY INSTALLED PINE WOOD PLANK SYSTEM. SEE INTERIOR ELEVATIONS AND DETAILS FOR SPECIAL REQUIREMENTS FOR JOINT AND SCREW PATTERN. FINISH WOOD PANELING W/ 1 COAT THOMPSON'S WATER SEALER. INSTALL PLANKS IN A RUNNING BOARD PATTERN (DO NOT OVERLAP EACH COURSE). FRP FRP LINER PANELS: STANDARD 3/32" SMOOTH BRIGHT WHITE FRP PANELS W/ CLOSURE TRIMS AT ALL EDGES AND PANEL JOINTS. BOTTOM CLOSURE TRIM TO BE SANITARY SWEEP BASE EXCEPT IN KITCHEN WHERE FLOOR SYSTEM EXTENDS 6" UP WALL. FRP-B FRP LINER PANELS: STANDARD 3/32" SMOOTH BLACK FRP PANELS W/ CLOSURE TRIMS AT ALL EDGES AND PANEL JOINTS. BOTTOM CLOSURE TRIM TO BE SANITARY SWEEP BASE. PL-1 PLASTIC LAMINATE ON 3/4" MEDIUM GRADE PLYWOOD TOLETT PARTITIONS. SS-1 STAINLESS STEEL LINER PANELS. FRP-T TILE LOOK FRP WITH VERTICAL STACKED BOND 4" X 16" TILE PATTERN. INSTALLED FULL HEIGHT OF WALL. WP-1 BEARRIDGE MANUFACTURING COMPANY BEHRRIDGE MR-16 METAL WALL PANELS.	PT-1 BURGERSI GREY #1 PT-2 BURGERSI GREY #2 PT-3 BURGERSI GREEN PT-4 GREENBLACK PT-5 ALPACA PT-6 METALLIC GREY PT-7 ALUM POWDER COAT PT-8 SILVER SATIN WC-1 PERFORATED LOOK FRP FROM 0'-4" AFF TO 4'-4" AFF WITH FRP FLAT STOCK INSTALLED AS SPECIFIED ON INTERIOR ELEVATIONS & DETAIL SHEET. WC-3 TILE LOOK FRP FROM 0'-0" TO 4'-0" AFF W/ LIGHT GREY, 4'-0" TO 4'-8" AFF IN GREEN, AND 4'-8" TO 8'-0" AFF IN LIGHT GREY. SEE INTERIOR ELEVATIONS & DETAILS.	FB-1 FRP BASE STRIP IN INSIDE CORNER TRIM TO CREATE COVE BASE. MMA-1 METHYL-METHACRYLATE ACRYLIC FLOORING SYSTEM (FINAL THICKNESS 3/16" WITH QUANTITY AGGREGATE BROADCAST). INCLUDES INTEGRAL COVE BASE. MMA-2 METHYL-METHACRYLATE ACRYLIC FLOORING SYSTEM (FINAL THICKNESS 3/16" WITH QUANTITY AGGREGATE BROADCAST). INCLUDES INTEGRAL COVE BASE.	FRP SILKAL 81 GO FLOORING SYSTEM (IF REQUIRED) SILKAL R41 PRIMER, SILKAL R40 MOISTURE VAPOR TREATMENT (IF REQUIRED) SILKAL R41 FILLER COATING (IF REQUIRED) SILKAL R17 POLYMER CONCRETE (IF REQUIRED) SILKAL R17 TOPPING SILKAL R17 TOP COAT COLOR CO-2. SEE SPEC GUIDE FOR INSTALLATION PRODUCT PROVIDED BY OWNER. FRP SILKAL 81 GO FLOORING SYSTEM (IF REQUIRED) SILKAL R41 PRIMER, SILKAL R40 MOISTURE VAPOR TREATMENT (IF REQUIRED) SILKAL R41 FILLER COATING (IF REQUIRED) SILKAL R17 POLYMER CONCRETE (IF REQUIRED) SILKAL R17 TOPPING SILKAL R17 TOP COAT COLOR CO-2. SEE SPEC GUIDE FOR INSTALLATION PRODUCT PROVIDED BY OWNER.



#	Description	Date

PRELIMINARY - NOT FOR CONSTRUCTION

FINISH PLAN

Project # 48920-V01
Issue Date 12/17/2020
Scale As indicated
Drawn by ZTM
Checked by MTB

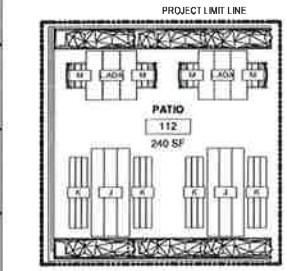
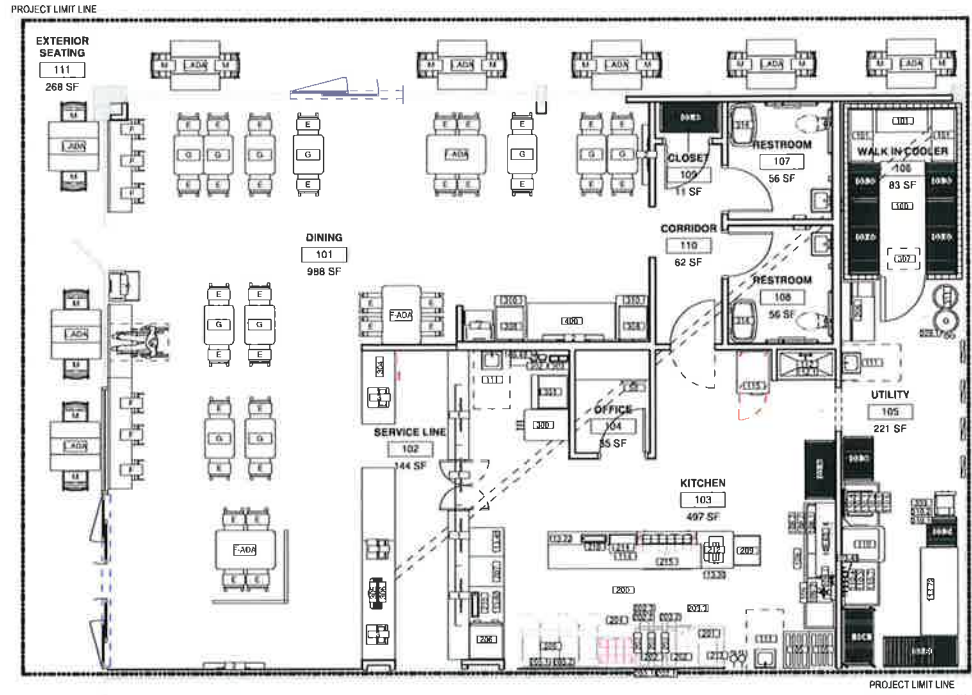
A-102

GENERAL NOTES

- ALL EXHAUST HOODS TO BE CONSTRUCTED TO MEET NSF UI AND NFPA 96 STANDARDS IN ADDITION TO ALL LOCAL GOVERNING CODES
- ALL COOKING EQUIPMENT UNDER EXHAUST HOODS TO BE EITHER ON CASTERS WITH QUICK DISCONNECTS AND RESTRAINTS, OR ON ADJUSTABLE STAINLESS STEEL LEGS AND SEALED TO THE WALL WITH CLEAR SILICONE SEALANT
- ALL ICE MACHINES TO BE HELD OFF ADJACENT WALLS BY AT LEAST A VACUUM BREAKER IS REQUIRED BY CODE. IT SHALL BE FINISHED AND INSTALLED BY THE PLUMBING CONTRACTOR
- DISHWASHERS WHERE APPLICABLE, WILL BE DESIGNED TO HAVE HIGH TEMPERATURE OF 180°F AND FINAL WASH TEMPERATURE OF 160°F
- ALL EXHAUST HOODS AND DUCTS TO BE PROVIDED WITH AN AUTOMATIC FIRE SUPPRESSION SYSTEM
- ALL FREEZERS/TOPERS TO BE FINISHED WITH THERMOMETERS WHICH ARE EASILY READABLE, IN PROPER WORKING CONDITION, AND ACCURATE TO WITHIN 2°F
- ALL COUNTER TOP EQUIPMENT NOT READY TO MOVE, WORKING OVER 60 LBS WILL BE PROVIDED WITH 4 LEGS WITH ADJUSTABLE FEET
- ALL CHEMICAL SANITIZER KITS FOR THREE COMPARTMENT SINKS WILL BE FINISHED BY CONTRACTOR SUPPLIER
- ALL CHEMICAL INJECTION SYSTEMS MUST BE INSTALLED DOWNSTREAM FROM A VACUUM BREAKER OR AIR GAP TO PREVENT POSSIBLE BACK SIPHON OF CHEMICALS INTO THE WATER LINES
- ALL CUTTING BOARDS SHALL BE OF NON WOOD CONSTRUCTION
- ALL FOOD SERVICE AND RELATED EQUIPMENT SHALL BE INSTALLED IN CONFORMANCE WITH NSF STANDARDS AND SHALL BE NSF APPROVED
- AN ANGLE SPACE OF MINIMUM 30" OR MORE SHALL BE PROVIDED IN ALL WORK SPACES
- SINK SPACERS OF EQUIPMENT SHALL BE INSTALLED A MINIMUM OF 3" FROM WALLS OR SEALED TO THE WALL WITH SILICONE SEALANT
- VACUUM BREAKERS, WHEN USED, TO BE 6" MINIMUM ABOVE FLOOD RISK WITH NO SHUT OFF DEVICES BEYOND THE DISCHARGE OF THE VACUUM BREAKER
- A MINIMUM 50 FOOT CANDLES OF LIGHT SHALL BE PROVIDED IN ALL FOOD PREPARATION AND SERVING AREAS
- HANDWASHING FACILITIES ARE REQUIRED IN THE FOOD PREPARATION, SERVING, AND UTENSIL WASHING AREAS
- SNEEZE GUARD PROTECTION, WHERE APPLICABLE WILL BE PROVIDED FOR EXPOSED UNWRAPPED FOOD

FURNITURE SCHEDULE

TYPE MARK	COUNT	DESCRIPTION	MANUFACTURER	MODEL	COMMENTS
E	34	INTERIOR DINING CHAIR	SAFCO	4359 GREY	
F	6	INTERIOR DINING STOOL	EMECO	111-24 CHARCOAL	
FADA	3	TABLE TOP AND END LEGS	CUSTOM	32" X 48"	
G	11	TABLE TOP AND PEDISTAL BASE	CUSTOM	32" X 24"	BLACK PEDISTAL BASE WITH WILSONART POWDER BRUSH 4778-60 LAMINATE TABLE TOP
J	2	LONG TABLE	LOLLI TRAPE	AL-172	
K	4	BENCH	LOLLI TRAPE	AL-858	
LADA	10	SQUARE TABLE	LOLLI TRAPE	AL-ADAT040	
M	20	EXTERIOR DINING CHAIR	FERMOB	4101	90% GRAY/10% GREEN



K1 EQUIPMENT PLAN

EQUIPMENT SCHEDULE

TYPE MARK	QTY	DESCRIPTION	MANUFACTURER	MODEL	MISC NOTES	TYPE MARK	QTY	DESCRIPTION	MANUFACTURER	MODEL	MISC NOTES	TYPE MARK	QTY	DESCRIPTION	MANUFACTURER	MODEL	MISC NOTES
1	1					110.4	2	24" SWAP RACK	SPARKE	SRK-3		209	1	FRY HOLDING STATION	HATCO	CRF115-PT38	
1	4	55" MENU BOARD				110.5	1	SOLEID DISH TABLE	BK RESOURCES	BKSD1-36-R-SS		207	1	POTATO RAN DUMP	ADVANCE/TANCO	16-S-362	30"X24"
2	3	55" TELEVISION				110.6	1	PRE-SCRAP BASKET	BK RESOURCES	COORD. W/ VENDOR		208	1	USED COOKING OIL RECEPTACLE	DAR PRO	B.O.S.S. SPACE SAVER	
3	3	POS SYSTEM				110.7	1	CLEAN DISH TABLE	BK RESOURCES	BKSD1-36-L-SS		209	1	WIRE BLEND RACK	TUNORA	RN-R1 1012	
50	1	FLOOR SAFE	VARIES	VARIES		111	3	HANDS-FREE HAND SINK	RK RESOURCES	840-S-D-1410-1-SS-BHK-P-G	17" SQUARE	210	2	STEAM WELL	WELLS	HWPB2U	
58	1	PASS THRU WINDOW 18 X 162	ADVANCE TABCO		12X8	112	1	MOP SINK	OWNER SUPPLIED			212	1	TOASTER	ANTUNES	VCT-2000	
100	1	WALK-IN COOLER/REFREZER	NORLAK	COORDINATE WITH VENDOR		112.1	1	MOP-SINK FAUCET	KROWNE	18-280		213	1	EGG STATION	ANTUNES	ES-604	
101	3	KEG RACK/STACKER	EAGLE GROUP	RFR1842A		113.30	1	PREP TABLE	BK RESOURCES	SVTR-3030 / US	30 X 30	214	1	MICROWAVE	PANASONIC	NE-1024	
103.24	1	METRO SHELVING	OLYMPIC	2743K	24"X36"	113.48	1	PREP TABLE	BK RESOURCES	FSS-304	30"X48"	215	1	SANDWICH TABLE REFRIGERATOR WITH DOORS	TURBO AIR	SLT-48-N	
103.30	2	METRO SHELVING	METRO	PR236MK3		113.60	1	PREP TABLE	BK RESOURCES	FSS-305	30"X60"	300	1	CUSTARD MACHINE	ELECTRO-FREZZE	M5050	
103.36	1	METRO SHELVING	METRO	PR236MK3		113.72	2	PREP TABLE	BK RESOURCES	FSS-306	30" X 72"	301	1	DESSERT COOLER	TURBO AIR	TST-38SD-N	
103.68	2	METRO SHELVING	METRO	PR241MK3		114	1	PROTO ISLAND COUNTER SHELVES	JERO	PROTO	10" - 3.58"	302	2	SINGLE MIXER	HAMILTON BEACH	HMD-200	
103.69	3	METRO SHELVING	METRO	PR266MK3		115	1	SOLO DOOR FREEZER M3 SERIES	TURBO AIR	M3-24-1-N		303	1	GIPPERWELL W/ TIMER	SERVER	67750	
104	1	DRYING RACK	CAMBIRD	EMU2418/8V4	24"X36"	200	1	EXHAUST HOOD	CAPTIVE AIRE	CUSTOM, COORDINATE WITH VENDOR		304	1	UNDERCOUNTER COOLER	TURBO AIR	MJR-205-NS	
105	2	DUNNAGE RACK	STORESAFE	DRS300	12" X 21" X 30"	201	1	CHEF BASE COOLER	TURBO AIR	TCBE-72SDR-N		305	1	BEER TOWER - 6 HEAD TEE	MICROMATIC	METRO-T-4PSSKA	
106.48.12	2	SS SHELF	BK RESOURCES	BRVNS-1248	12" X 48"	202	2	24" FLAT TOP GRILL	VULCAN	MSA24		306	1	DRAIN TROUGH/DRP TRAY	MICROMATIC	DP-MET-1124	
106.60.16.2	2	SS SHELF	BK RESOURCES	BRVNS-1660	16" X 60"	203.1	1	GAS HOSE KIT	DORMONT	COORD. W/ VENDOR		307	2	MICROWAVE POWER RAK	MICROMATIC	MMPR4031EP	
106.60.18.2	2	SS SHELF	BK RESOURCES	TRD	18" X 60"	203.2	1	GRILL UTENSIL HOLDER	JERO	DWG #45080-1		308	2	ICE MAKER - TOP MOUNTED	MANITOWAC	IV10620A	
108	1	FOUR-COMPARTMENT SINKS	EAGLE GROUP	416-18-4-18		203.3	1	GRILL TIMER	PRINCE CASTLE	740-18		309	1	BAG IN BOX FILTER SYSTEM	PENTAIR	EV9275-02	
108.1	2	8" WALL MOUNT MIXING FAUCET	T&S	B-2414		203	3	CLAMSHELL	VULCAN	VAUCS-201-FM		300.1	1	BAG IN BOX FILTER HEAD REPLACEMENT	PENTAIR	EV9612-58	
108.2	1	DRAINING WASTE VALVE	FISHER	22438		203.1	1	GAS HOSE KIT	DORMONT	COORD. W/ VENDOR		310	1	WATER BOOSTER	COCA-COLA	9100	
108.3	1	DRAINING WASTE VALVE OVERFLOW	FISHER	22206		203.2	1	GRILL UTENSIL HOLDER	JERO	DWG #45080-1		310.1	1	WATER BOOSTER	COCA-COLA	16-2172	
109	1	FRY CUTTER	NEMCO	56450-2		203.3	1	GRILL TIMER	PRINCE CASTLE	740-18		311	2	WATER TANK	WALCO	RAC102 300LB	16"x18"
109.2	1	FRY CUTTER BRACKET MOUNT	CUSTOM	COORD. W/ VENDOR		204	1	SANDWICH TABLE REFRIGERATOR W DRAWERS	TURBO AIR	TST-28SD U-2	17.5"X30"X37"	312	1	BBB RACK	COCA-COLA	9100	
110	1	DISH MACHINE	ECOLAB	EHT M DIS-MACHINE	26.5"X39"X18"	205	4	PANER	VULCAN	TYK80		313	2	HORIZONTAL BABY CHANGING STATION	KOMAL CARE	KB200-1553 GREY	
110.1	1	PRE-RINSE SPRAYER FAUCET	T&S	B-2187		205.1	1	FRY RACK	JERO	CUSTOM DRAWING #45076		400	1	CONDIMENT CABINET	CUSTOM MILLWORK		
110.2	1	1/2" VERN DRAIN	T&S	B-3342		205.2	1	GAS HOSE KIT	DORMONT	COORD. W/ VENDOR							
110.3	2	36" SWAP RACK	SPARKE	SRK-3													

DESIGN INTENT: FOR REFERENCE ONLY

PRELIMINARY - NOT FOR CONSTRUCTION

EQUIPMENT LAYOUT & SCHEDULE

Project # 49220-V/01
 Issue Date 1/21/2020
 Scale 1/4" = 1'-0"
 Drawn by JMB
 Checked by JMB