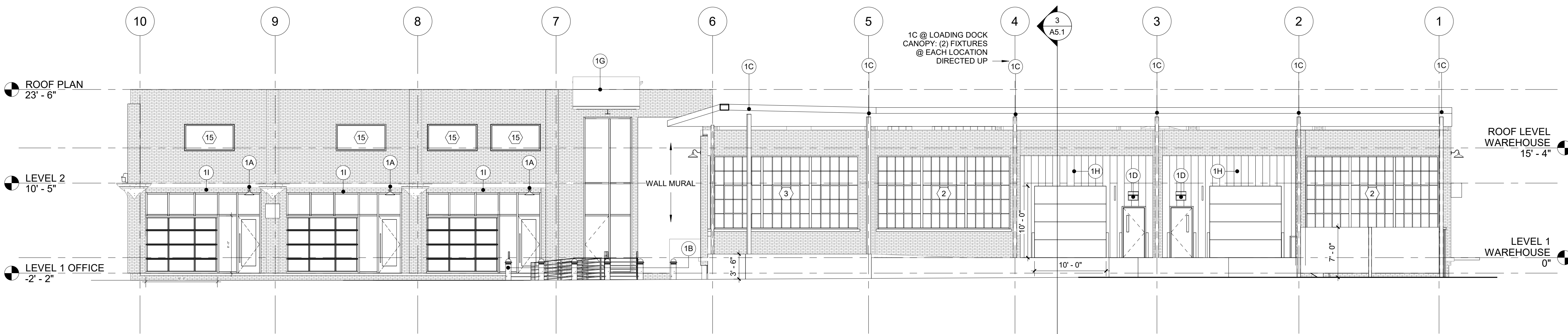


1 SOUTH ELEVATION
A3.0 1/8" = 1'-0"



2 NORTH ELEVATION
A3.0 1/8" = 1'-0"

EXTERIOR KEYNOTES	
1A	GOOSENECK LED - E-CONOLIGHT E-WDG SERIES 10" ANGLED SHROUD, BLACK.
1B	BOLLARD LIGHT - WAC LIGHTING, 6612-27BK.
1C	FLOOD - WAC LIGHTING, WP-LED335-30-aBK.
1D	WALLPACK - WAC LIGHTING, WP-LED219-30-aBK.
1E	SCONCE - WAC LIGHTING, DS-WS0622-F27S-BK.
1G	LED CANOPY UP LIGHTING- HOUSING: Q TRAN LED, TORQ-BK-SST-DF-S1 VERIFY LENGTH. LED TAPE: Q TRAN LED, SW24/5.0-WET-27-BW VERIFY LENGTH.
1H	FIRESTONE METAL PANEL - CFP-12F PROFILE 18 GA. MATTE BLACK.
1I	8" BLACK BREAK METAL ABOVE STOREFRONT.
27	NEW LOUVERED ALUMINUM AWNING TYP. SOUTH ELEVATION FIRST-LEVEL WINDOWS, SEE 3/A3.0. PROVIDE ADD/ALT FOR SIMILAR AWNINGS AT ALL EAST AND WEST FIRST-LEVEL WINDOWS.
30	NEW MTL AWNING SEE 4/A3.0
31	REPAIR EXG. AWNING
32	REPAIR STUCCO BANDS AS REQ. TYP.

MASONRY SCOPE
-25% TUCKPOINTING OF HISTORIC BRICK
-NO TUCKPOINTING OF NEWER BRICK
-REPLACE 100 BRICKS PER ELEVATION
-REMOVE ROW-LOCK SILLS AND INSTALL NEW PRECAST CONCRETE SILLS
-THRU WALL FLASHING AT ALL STEEL LINTELS (ASSUME 3-5 COURSES REMOVED)
-PILASTER RUNNING CRACKS ARE PREVALENT. MANY AREAS ARE BELOW THROUGH WALL SCUPPERS THAT NEED REPAIR.
-MTL. CAP ON ALL PILASTER PARAPETS WITHOUT A SERVICEABLE CAP.
-PATCH CONCRETE BASE AT GRADE AS NECESSARY
-PATCH, REPAIR AND INSTALL PREFINISHED METAL FLASHING AT CONCRETE COLUMN CAPITALS ON EAST AND NORTH FACADES
-REPLACE NON-SERVICABLE LINTELS (ASSUME 20%)
-REMOVE NON-HISTORIC FLOWER BOX BASES ON SOUTH ELEVATION
-PAINT CMU BLOCK AND LINTELS AT ROOF
-REMOVE ALL TERRA COTTA PARAPET CAPS FOR ROOFING
-INSTALL PREFINISHED METAL PARAPET CAP AND FLASHING
-ADDRESS MISSING BRICK AT VARIOUS LOCATIONS, INCLUDING AT THE NORTH ELEVATION

MASONRY RESTORATION NOTES
1. VERIFY EXTENTS OF EACH TYPE OF REPAIR OR RESTORATION BY PRODUCING A CONDITION SURVEY FOR REVIEW BY THE ARCHITECT.
2. PROPOSED DETAILS FOR FACADE RECONSTRUCTION, SUCH AS MULTI WYTHE REBUILD, TO BE SUBMITTED TO STRUCTURAL ENGINEER FOR REVIEW.
3. ALL MASONRY RESTORATION METHODS WILL BE ACCOMPLISHED IN ACCORDANCE WITH THE GUIDANCE PROVIDED IN THE PRESERVATION BRIEF.
4. MASONRY REPOINTING WILL BE ACCOMPLISHED IN ACCORDANCE WITH THE GUIDANCE PROVIDED IN PRESERVATION BRIEF 2
5. PROVIDE MOCK-UP OF ALL MASONRY RESTORATION METHODS INCLUDING PROPOSED NEW BRICKS AND TUCK POINTING.
6. LIGHT EXTERIOR CLEANING ALL SURFACES
7. INTERIOR MASONRY TO BE CLEANED LIGHTLY USING METHODS RECOMMENDED BY MASONRY RESTORATION STANDARDS.

WINDOW NOTES
DIMENSIONS TO MUNTINS ARE TO THE CENTERLINE. OTHER DIMENSIONS TO OUTER FACE OF UNIT.
ALL FIRST LEVEL ROUGH OPENINGS REQUIRE NEW PRECAST CONCRETE SILL TO REPLACE THE EXISTING ROW LOCK SILLS.
PROPOSED NEW WINDOWS TO BE 1 1/8" BY 3 1/4" STEEL PROFILES
BASIS OF DESIGN - GRAHAM SR6700 SERIES STEEL REPLICA FIXED.
COLOR TO BE CHOSEN FROM MANUFACTURER'S STANDARD COLOR PALETTE
STOREFRONT WINDOWS - SEE ELEVATIONS FOR DIMENSIONS
BASIS OF DESIGN - KAWNEER ENCORE SYSTEM. COLOR TO BE CHOSEN FROM MANUFACTURER'S STANDARD COLOR PALETTE
ALL GLASS TO BE CLEAR 1/2" I.G.U., LOW E, SOLARBAN 70
ADD/ALT: PROVIDE LOUVERED AWNINGS PER SOUTH ELEVATION AT ALL EAST AND WEST FIRST-LEVEL OPENINGS.