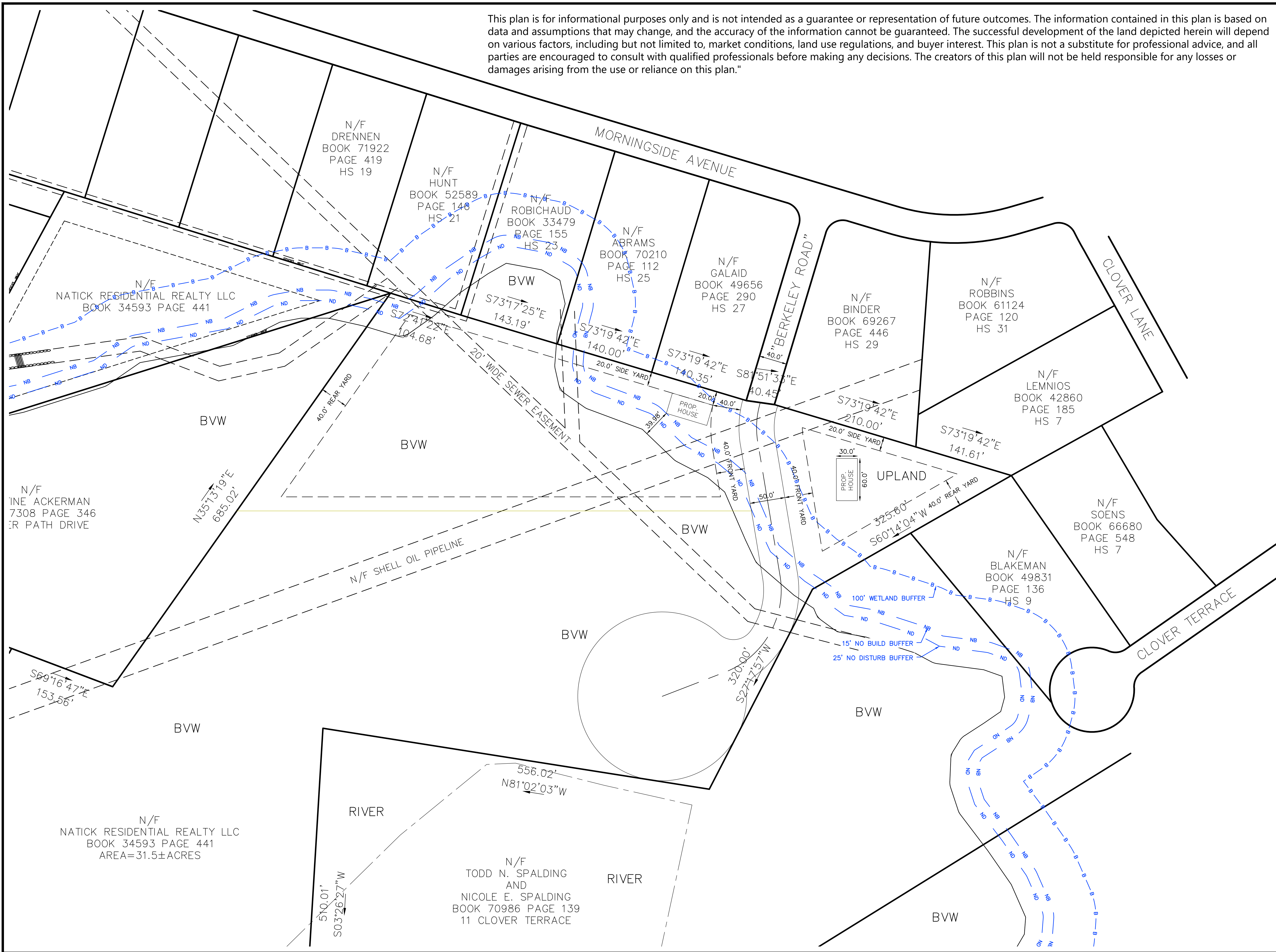


This plan is for informational purposes only and is not intended as a guarantee or representation of future outcomes. The information contained in this plan is based on data and assumptions that may change, and the accuracy of the information cannot be guaranteed. The successful development of the land depicted herein will depend on various factors, including but not limited to, market conditions, land use regulations, and buyer interest. This plan is not a substitute for professional advice, and all parties are encouraged to consult with qualified professionals before making any decisions. The creators of this plan will not be held responsible for any losses or damages arising from the use or reliance on this plan."

This plan is for informational purposes only and is not intended as a guarantee or representation of future outcomes. The information contained in this plan is based on data and assumptions that may change, and the accuracy of the information cannot be guaranteed. The successful development of the land depicted herein will depend on various factors, including but not limited to, market conditions, land use regulations, and buyer interest. This plan is not a substitute for professional advice, and all parties are encouraged to consult with qualified professionals before making any decisions. The creators of this plan will not be held responsible for any losses or damages arising from the use or reliance on this plan."



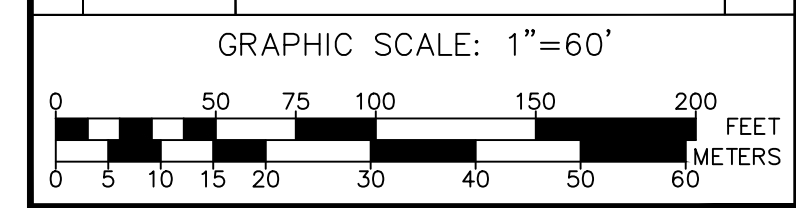
DATE: _____ DATE: _____

- NOTES
- CONSTRUCTION ON THIS LOT IS SUBJECT TO ANY EASEMENTS, RIGHTS-OF-WAY, RESTRICTIONS, RESERVATIONS OR OTHER LIMITATIONS WHICH MAY BE REVEALED BY AN EXAMINATION OF THE TITLE.
 - "WARNING" EXISTING UTILITY LINES INDICATED OR NOTED ON THESE DRAWINGS ARE SHOWN AS OBTAINED FROM EXISTING INFORMATION AND ARE ONLY APPROXIMATE IN LOCATION. THE CONTRACTOR SHALL TAKE CAUTION IN THESE AREAS TO AVOID DAMAGE TO EXISTING UTILITY LINES AND/OR HARM TO PERSONNEL ENGAGED IN WORKING IN THESE AREAS. CALL "DIG SAFE" 1-888-DIG-SAFE (1-888-344-7233). EXISTING LINES OTHER THAN THOSE INDICATED ON THESE DRAWINGS MAY BE ON THE SITE. THE CONTRACTOR IS WARNED TO PROCEED WITH CAUTION WITH ALL WORK, ESPECIALLY EXCAVATION WORK, AND TO MAKE ALL POSSIBLE INVESTIGATIONS AS TO POSSIBLE UNMARKED UTILITY LINES. SEE THE FOLLOWING PLANS RECORDED AT THE MIDDLESEX DISTRICT REGISTRY OF DEEDS-
 - PLAN 645 OF 2009
 - PLAN 363 OF 2005
 - PLAN 298 OF 2001
 - PLAN 1299 OF 2000
 - PLAN 364 OF 1999
 - PLAN 110 OF 1999
 - PLAN 1005 OF 1998
 - PLAN 907 OF 1998
 - PLAN 54 OF 1997
 - PLAN 727 OF 1996
 - PLAN 786 OF 1983
 - PLAN 1108 OF 1978
 - PLAN 23 OF 1978
 - LC PLAN 6844F 1974
 - PLAN 264 OF 1971
 - PLAN 622 OF 1967
 - PLAN 95 OF 1966
 - PLAN 1567 OF 1963
 - PLAN 585 OF 1959
 - PLAN 148 OF 1956
 - BORDERING VEGETATED WETLAND INFORMATION DEPICTED HEREON IS BASED ON A SKETCH PROVIDED BY GODDARD CONSULTING LLC 291 MAIN STREET NORTHBORO MA 01532 (508)393-3784
 - ZONING - RESIDENTIAL SINGLE-B (RSB)
 - MIN. FRONTAGE SETBACK - 40'
 - MIN. SIDE SETBACK - 20'
 - MIN. REAR SETBACK - 40'
 - MIN. AREA - 40,000 SF
 - MIN. DEPTH - 150'
 - MIN. FRONTAGE - 140'

OWNER
 FAFARD
 APPLICANT
 FAFARD

PARCEL A
 CONCEPTUAL
 PLAN OF LAND
 "SANCTUARY"
 IN
 NATICK, MA
 SCALE: 60 FEET TO AN INCH
 DATE: FEBRUARY 10, 2020

| NO | DATE | INITIAL | SUBMITTAL | INIT |
|----|------|---------|-----------|------|
| | | | | |
| | | | | |
| | | | | |



Guerriere & Halnon, Inc.
 ENGINEERING & LAND SURVEYING
 333 WEST STREET PH. (508) 473-6630
 MILFORD, MA 01757 FX. (508) 473-8243
 www.gandhengineering.com

G:\C3DMilford\G-5218-1\DWG\G-5218-1 SITE.dwg