

# Sophie Walker Building FOR LEASE: RETAIL / OFFICE



24,200 Vehicles/Day\* - HIGH VISIBILITY

**THE SOPHIE WALKER BUILDING**, centrally located in urban Honolulu, offers high-visibility signage on Pensacola Street and easy access for pedestrians, vehicles, and bus riders. On-site businesses include food and beverage, retail, hair styling, health services, watch repair, and education programs.

**1017/1023 PENSACOLA ST, HONOLULU, HI 96814**

SUITE	RSF	RATE	CAM	DESCRIPTION
1027 D	414	\$3.00	\$2.40	Ground floor office with access along the bus line. Ideal for creative or professional office use.
1023 E	209	\$1.15	\$2.40	2nd Floor with high visibility and convenient pedestrian and vehicular access
1023 H	405	\$1.15	\$2.40	2nd Floor corner space facing Young and Pensacola Streets. High visibility and convenient pedestrian and vehicular access. Parking: \$65/Month.

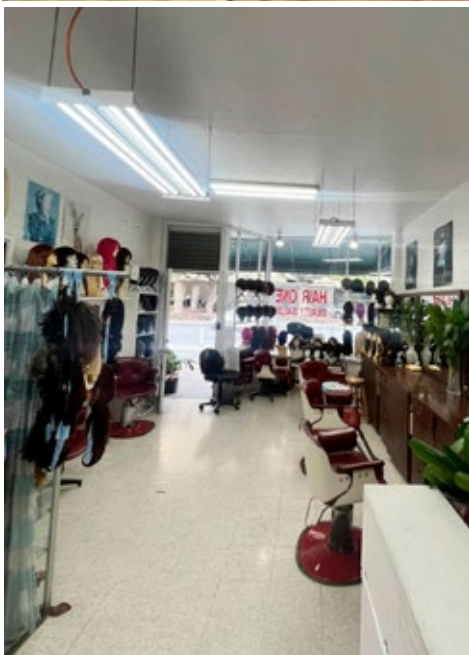
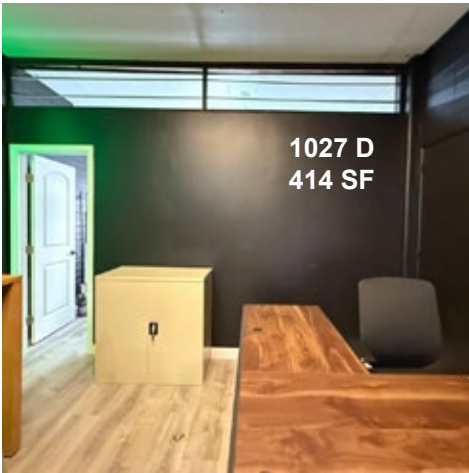


\*Source ©2022 Kalibrate Technologies (Q3 2022)

Posted 01/13/26. The information presented was obtained from sources believed reliable. While we do not doubt its accuracy, we have not verified it and make no guarantee, warranty or representation about it.

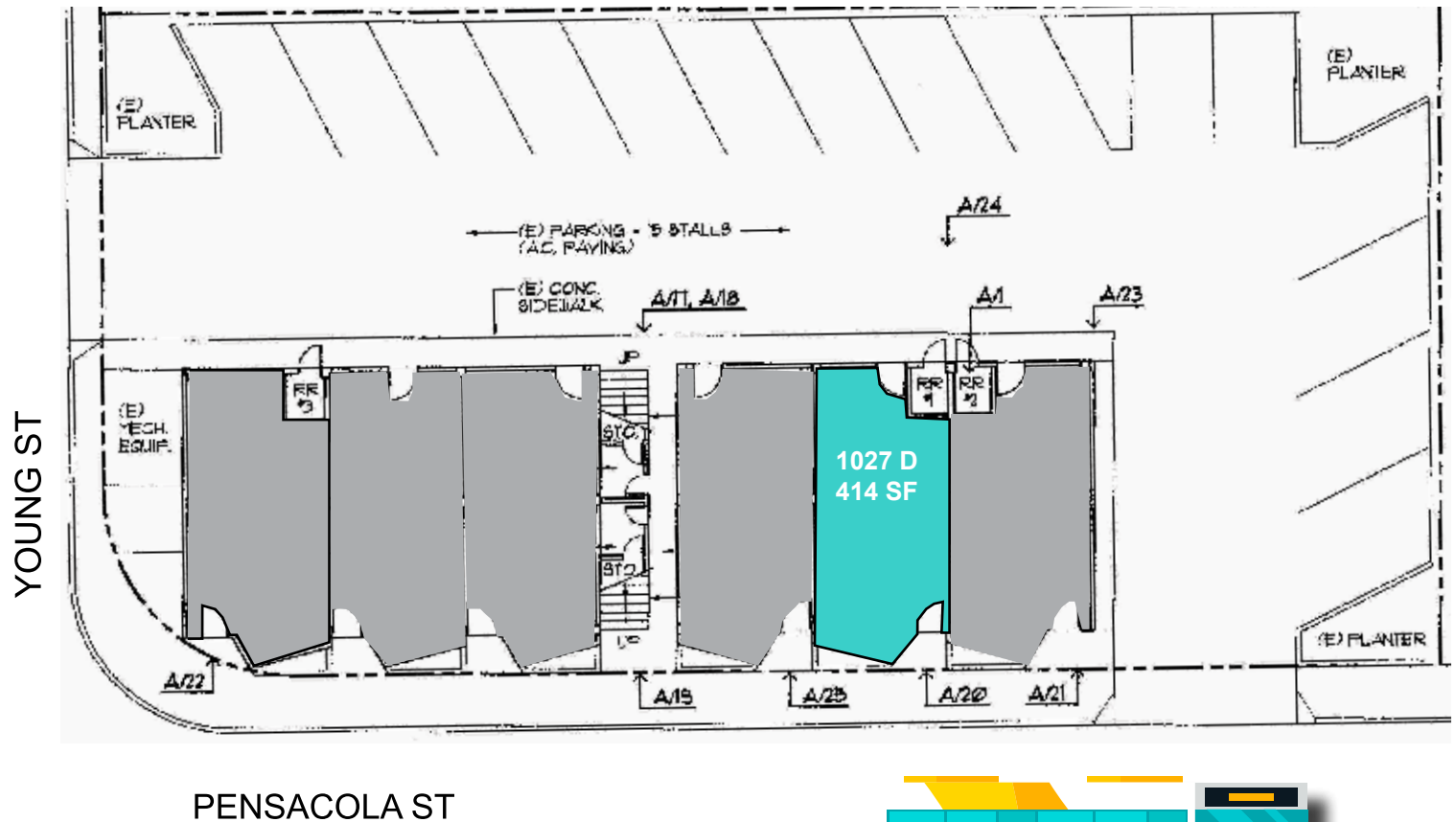


# *Sophie Walker Building* FOR LEASE: RETAIL / OFFICE



1017-1023 Pensacola St, Honolulu, HI 96814

## GROUND FLOOR



24,200 Vehicles/Day\* - HIGH VISIBILITY



**Hawaii  
Commercial  
Real Estate**  
hawaiiCRE.com



**SUMMER MERIT (S)**  
Vice President  
HI LIC #RS-83889  
summer@hawaiiCRE.com  
+1 (808) 375-9531



**TAYLOR HIGA (S)**  
Property Management/Leasing  
HI LIC #RS-86404  
taylor@hawaiiCRE.com  
+1 (808) 260-6441



# *Sophie Walker Building* FOR LEASE: RETAIL / OFFICE

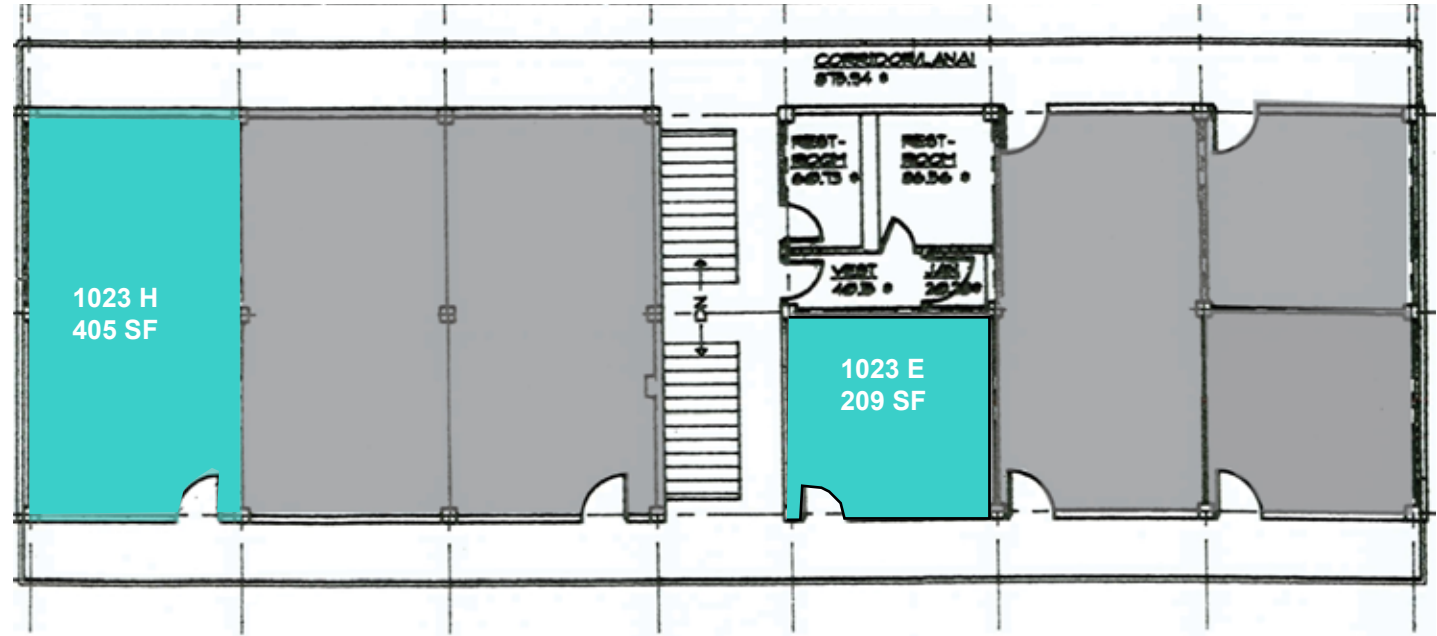


1017-1023 Pensacola St, Honolulu, HI 96814

**2nd FLOOR**



YOUNG ST



PENSACOLA ST



24,200 Vehicles/Day\* - HIGH VISIBILITY



**Hawaii  
Commercial  
Real Estate**  
hawaiiCRE.com



**SUMMER MERIT (S)**  
Vice President  
HI LIC #RS-83889  
summer@hawaiiCRE.com  
+1 (808) 375-9531



**TAYLOR HIGA (S)**  
Property Management/Leasing  
HI LIC #RS-86404  
taylor@hawaiiCRE.com  
+1 (808) 260-6441