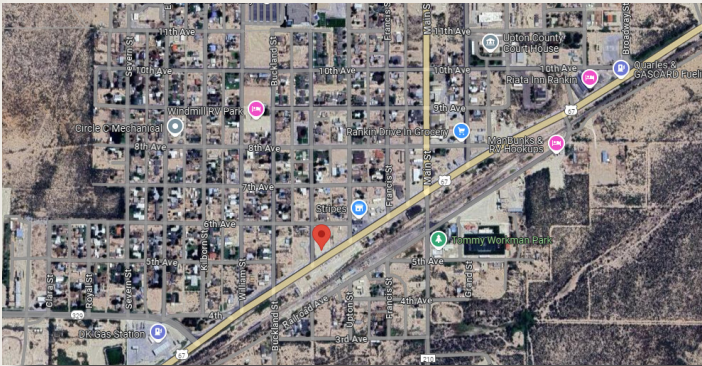


FOR SALE | 310 W HWY 67, Rankin, TX 79755

2,840 SF Building on a 3 AC Commercial Lot



LOCATION: This property is located on US HWY 67, centrally located in Rankin, TX.

SIZE: Approximately 3 Acres

FRONTAGE/ ACCESS: Property may be accessed from US HWY 67 and Halff Street

UTILITIES: Water, Sewage & Electricity

ZONING: Commercial

TOPOGRAPHY: Flat

FLOOD HAZARD: The Property does not reside in the FEMA Floodplain

SCHOOL DISTRICT: Rankin ISD

JURISDICTION: City of Rankin

PRICE: Contact Broker for Pricing

COMMENTS: Great industrial property for an investor or user. Metal building is relatively new, constructed in 2019. Fenced in yard space, with plenty of additional land. Building has one (1) Grade Level Door.

**CONTACT
FOR PRICING**

BRYAN MCMURREY
Managing Director
512.314.3971
bryan.mcmurrey@transwestern.com

RYE HINKLE
Senior Associate
512.314.5215
rye.hinkle@transwestern.com