



Suites available from 541 RSF – 10,300 RSF

Nelson Building

1503 Santa Rosa Road, Richmond, VA

Two story building totaling 38,914 RSF

- Lobby renovated 2024!
- Brand new tenant lounge
- Located in Forest Office Park
 - 18 building, 740,000 SF suburban office park conveniently located in the heart of Richmond's West End
 - Approximately 1 Mile from Interstate 64
 - Directly Across from HCA's Henrico Doctors' Hospital
 - Adjacent to Henrico County's recently renovated Cheswick Park
 - Plentiful amenities nearby including Village Shopping Center, Reynolds Crossing and Regency Square
- Owned and Managed by Equitable Real Estate Partners
 - Equitable Real Estate Partners owns 7 buildings in Forest Office Park – Almond, Koger, Nelson, Wythe, Culpepper, Ratcliffe, and Lee
- Signage opportunities – building facade and monument signage available
- Common Conference Room Access
 - Culpepper Building (25 seat capacity)
 - Koger Building (15 seat capacity)
- Plentiful Parking to accommodate office and medical office users



CONTACT US

Malcolm Randolph, SIOR

Senior Vice President

+1 804 267 7208

malcolm.randolph@colliers.com

Catherine Walker

Senior Associate

+1 804 968 1978

catherine.walker@colliers.com

Austin Makepeace

Associate

+1 804 762 6790

austin.makepeace@colliers.com

Colliers

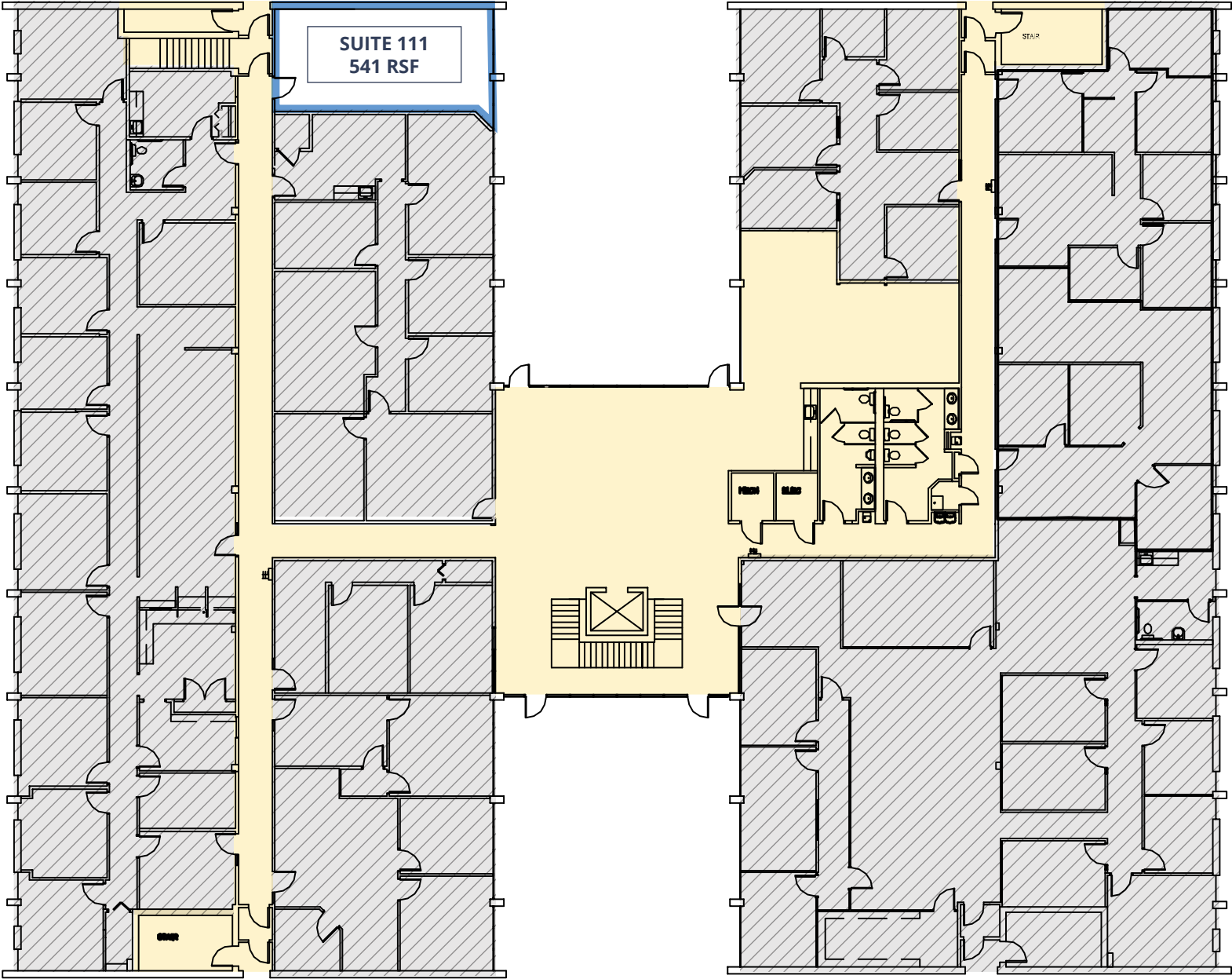
2221 Edward Holland Dr

Suite 600 | Richmond, VA

P: +1 804 320 5500

colliers.com

FIRST FLOOR

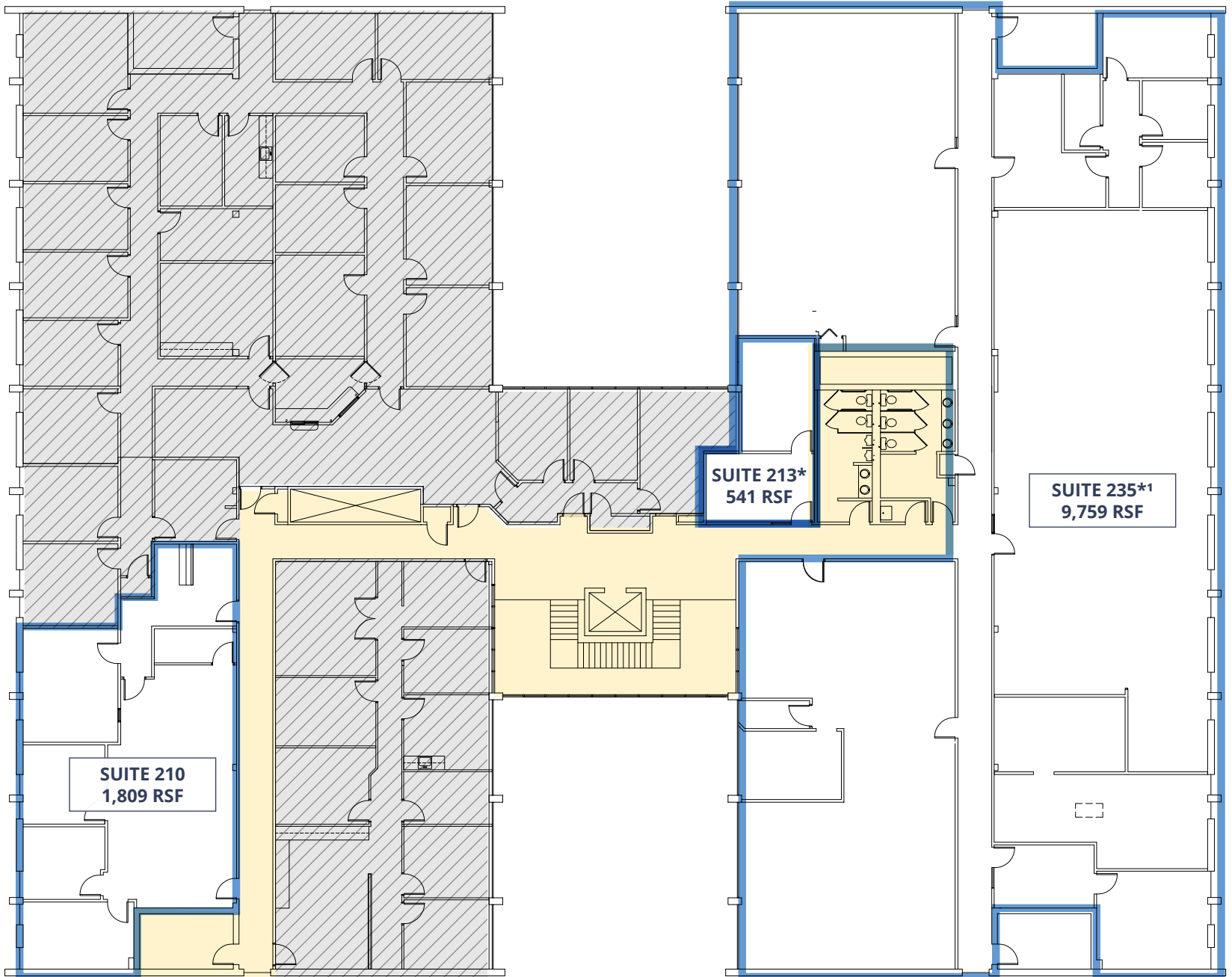


Nelson Building

SECOND FLOOR

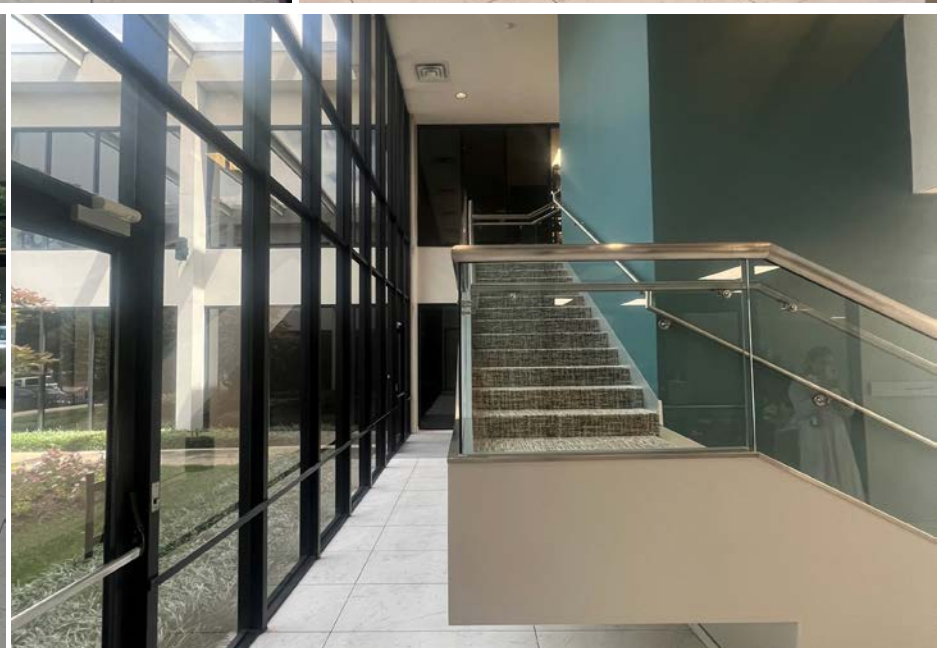
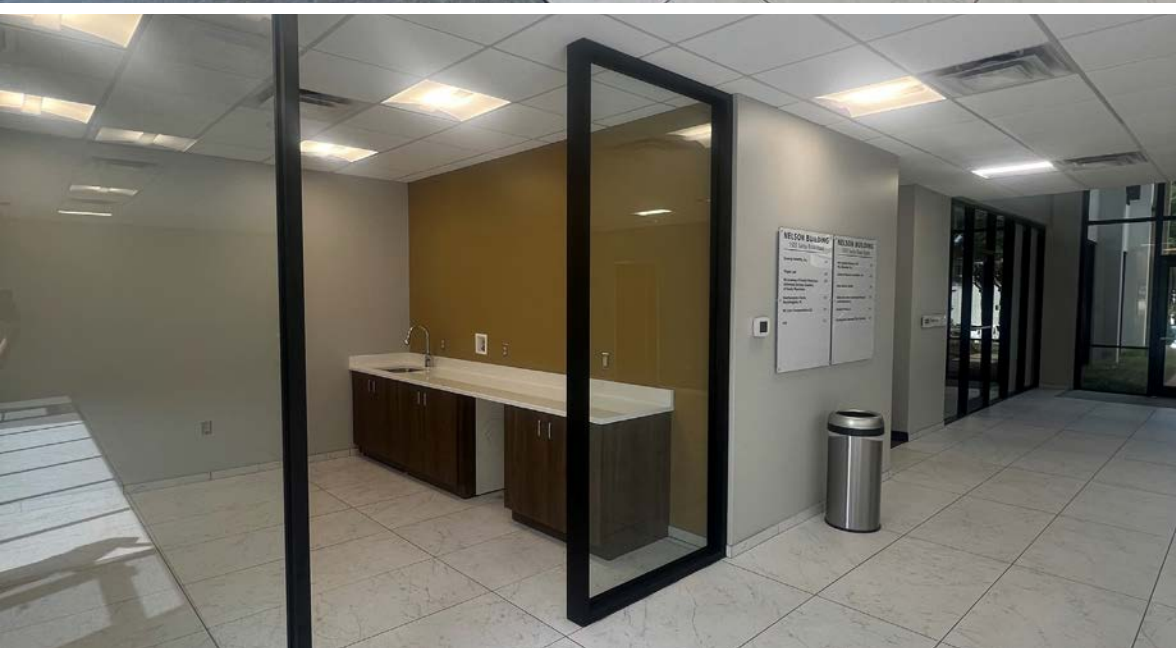
¹ Subdividable

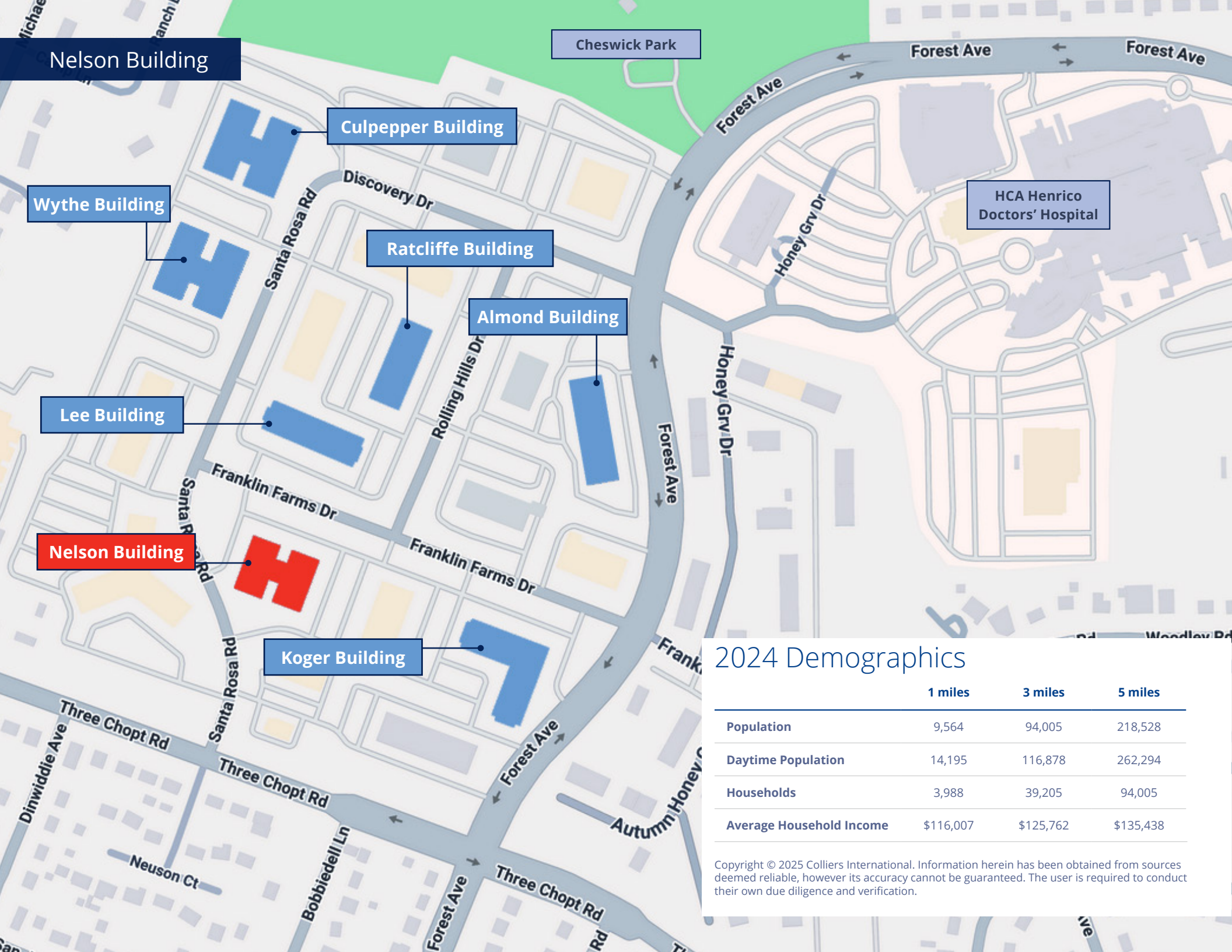
*Suites can be combined
for 10,300 RSF



Nelson Building

Lobby Renovations





Nelson Building

Cheswick Park

Culpepper Building

Wythe Building

HCA Henrico
Doctors' Hospital

Ratcliffe Building

Almond Building

Lee Building

Nelson Building

Koger Building

2024 Demographics

	1 miles	3 miles	5 miles
Population	9,564	94,005	218,528
Daytime Population	14,195	116,878	262,294
Households	3,988	39,205	94,005
Average Household Income	\$116,007	\$125,762	\$135,438

Copyright © 2025 Colliers International. Information herein has been obtained from sources deemed reliable, however its accuracy cannot be guaranteed. The user is required to conduct their own due diligence and verification.

Nelson Building

WEDGEWOOD

Regency Mall

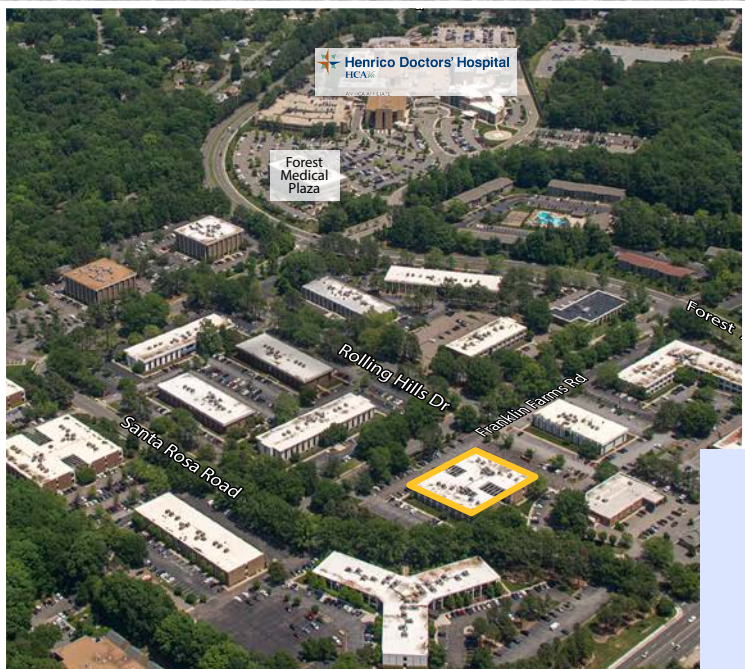


Cheswick Park

Henrico Doctors' Hospital

Forest Office Park

Reynolds Crossing

Malcolm Randolph, SIOR
 Senior Vice President
 +1 804 267 7208
 malcolm.randolph@colliers.com

Catherine Walker
 Senior Associate
 +1 804 968 1978
 catherine.walker@colliers.com

Austin Makepeace
 Associate
 +1 804 762 6790
 austin.makepeace@colliers.com