

1,106 SF | Downtown Alpharetta Three Blocks from City Center

312 Maxwell Rd, Suite 300
Alpharetta, GA 30009



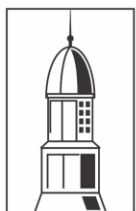
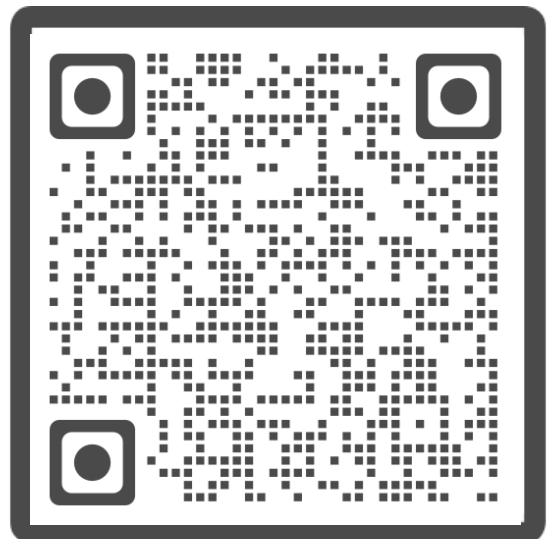
Property Highlights:

- 1,106- Fully Renovated – First Generation Office Space
- Alpharetta Walking District – Start of the Alpha Loop
- Part of a 9 Acre 100+ Condominium Office Park
- Professional On-Site Property Management and Leasing
- 500+ On-Site Parking Spaces
- Less than 1 Mile from Avalon Development & GA 400

Take the Virtual Tour of Typical Renovations:

<https://my.matterport.com/show/?m=Af6waPN2M4q>

Property Type	Office
Space	1,106 sq ft
Rent Type	Modified Gross
Term	3-5 Year



COLONY PARK

OFFICE CONDOMINIUMS

312 Maxwell Rd, Suite 300 • Alpharetta, GA 30009

For Lease



Shiplap Feature Wall
Private Reception
2 Private Offices / 1 Conference Room
Private Wet Bar and Private Bathroom



312 Maxwell Rd | Alpharetta



COLONY PARK
OFFICE CONDOMINIUMS

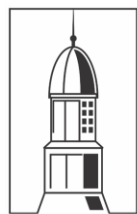
312 Maxwell Rd, Suite 300 • Alpharetta, GA 30009

For Lease

Upgraded
Commercial Carpet
and Hardwoods



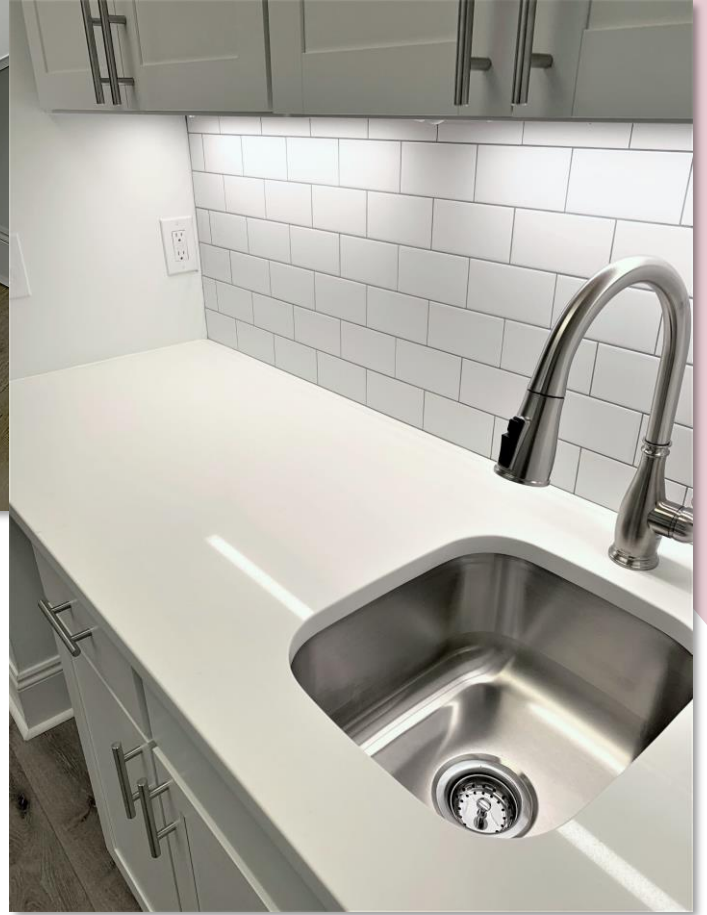
Premium Quartz Wet
Bar with Subway Tile
Backsplash



COLONY PARK
OFFICE CONDOMINIUMS

312 Maxwell Rd, Suite 300 • Alpharetta, GA 30009

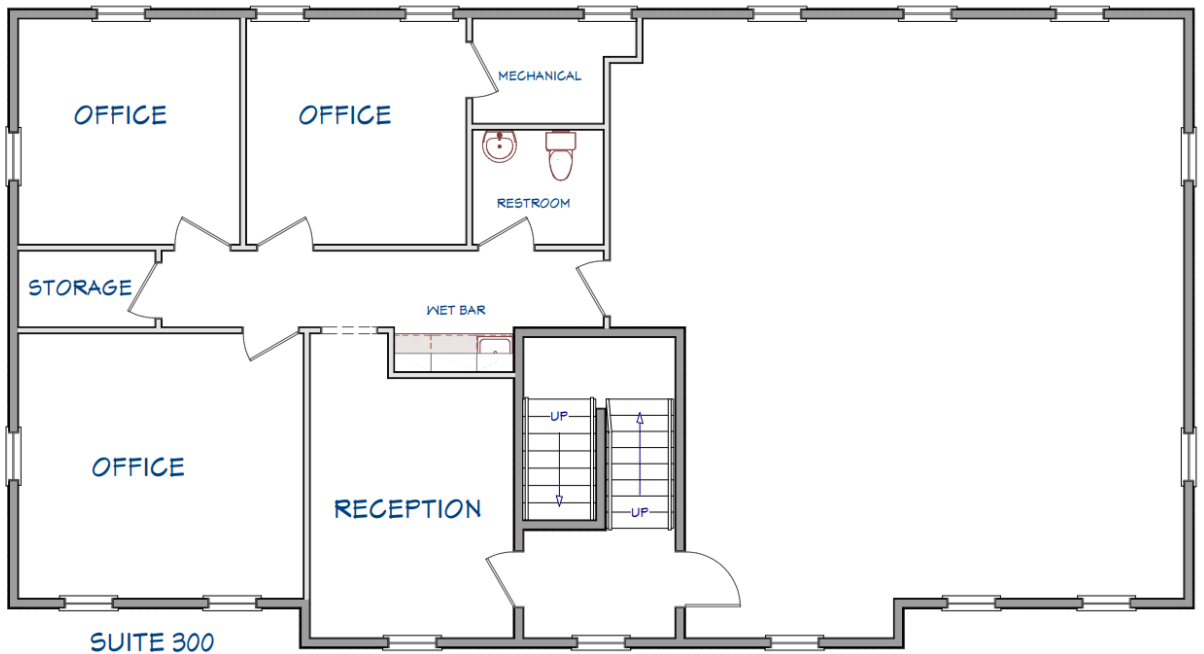
For Lease



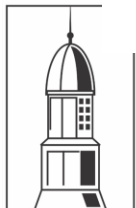
312 Maxwell Rd | Alpharetta

Floor Plan – Suite 300

COLONY PARK OFFICES
312 MAXWELL RD
SUITES 300 & 400



SUITE 300 - 1106 SQ FT



COLONY PARK
OFFICE CONDOMINIUMS

312 Maxwell Rd, Suite 300 • Alpharetta, GA 30009

