

Available
Office Space
in
Stone Haven
Business Park

10604
Trademark
Parkway
Suite 307

FOR LEASING
INFORMATION
CONTACT:

Carol D. Plowman
BRE License # 00849369
909-373-2905

Danielle Parker
BRE License # 01927503
909-373-2906

3535 Inland Empire Blvd
Ontario, CA 91764



Corporate ID# 00976995

STONE HAVEN BUSINESS PARK

10600 - 10608 Trademark Parkway
Rancho Cucamonga, CA 91730



Great Business Park Environment:

- Multi-Tenant Office / Flex Spaces
- Building and Monument Signs Available
- Move-In Ready Suites
- Up to 4:1,000 Parking on Select Units
- Easy Access to Interstate 10 and 15 Freeways
- Near LA-Ontario International Airport, Ontario Mills Mall, and Victoria Gardens



Available
Office Space
in
Stone Haven
Business Park

10604
Trademark
Parkway
Suite 307

FOR LEASING
INFORMATION
CONTACT:



Corporate ID# 00976995

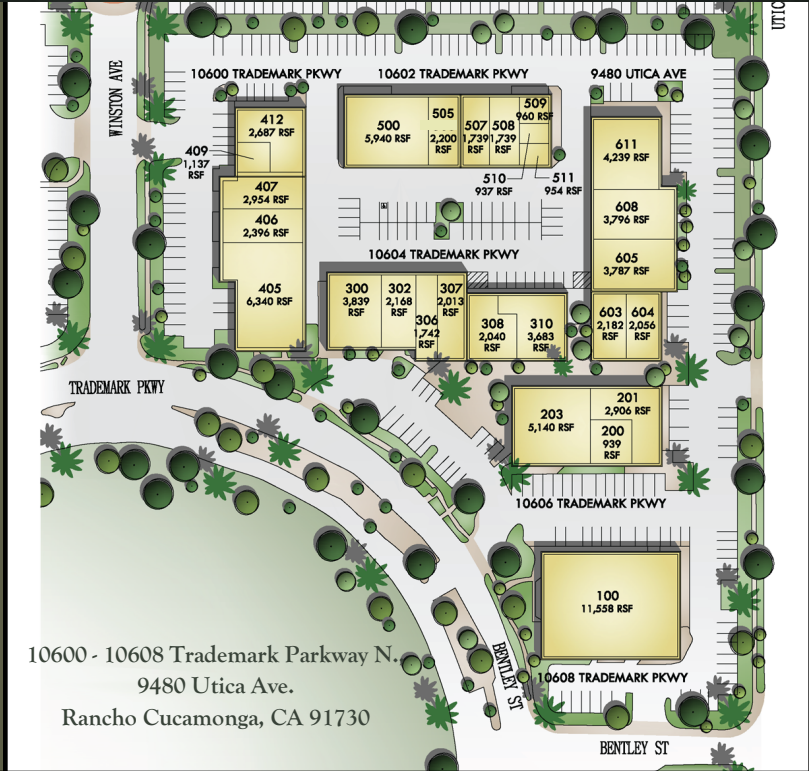
Carol D. Plowman
BRE License # 00849369
909-373-2905

Danielle Parker
BRE License # 01927503
909-373-2906

3535 Inland Empire Blvd
Ontario, CA 91764



STONE HAVEN BUSINESS PARK



AVAILABILITIES:

STREET ADDRESS	SUITE	±SF	RATE / SF	AVAILABILITY
10604 Trademark Pkwy	307	2,013	\$1.65	1/1/2025

Lease Term:

1 – 5 Years

Tenant Improvements:

Negotiable

CAM Fee:

\$0.13 / SF

STONE HAVEN

BUSINESS PARK

10604
Trademark
Parkway
Suite 307

FOR LEASING
INFORMATION
CONTACT:

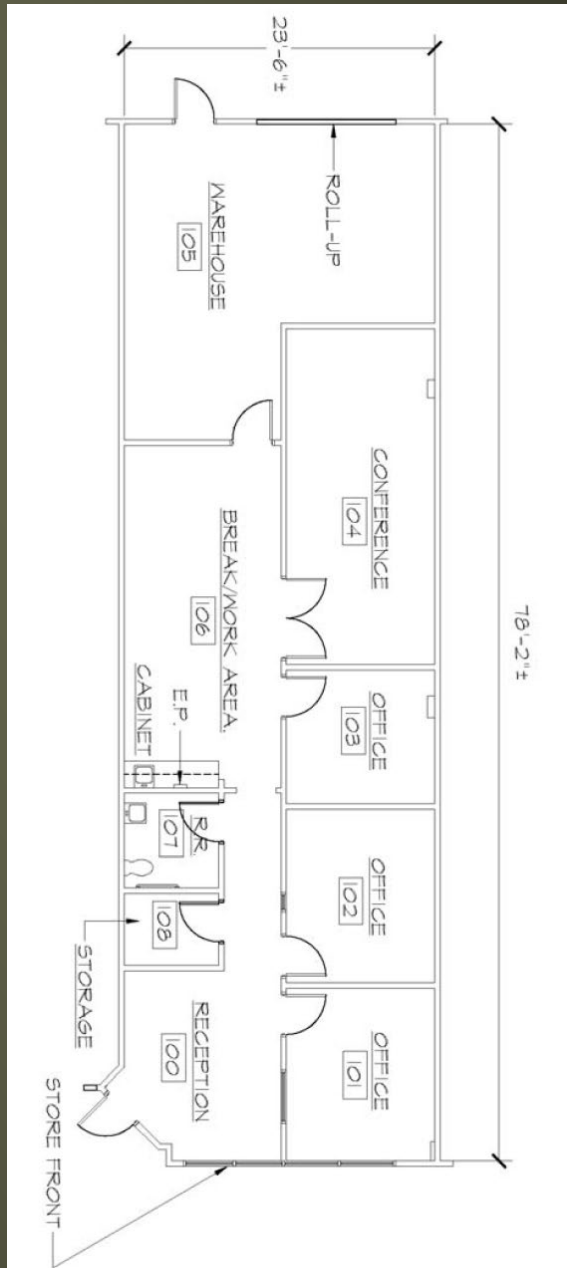


Corporate ID# 00976995

Carol D. Plowman
BRE License # 00849369
909-373-2905

Danielle Parker
BRE License # 01927503
909-373-2906

3535 Inland Empire Blvd
Ontario, CA 91764



Suite 307
± 2,013 SF