

FOR LEASE

6,400± SF OFFICE/WAREHOUSE

748 Lakeside Drive | Mobile, AL



PROPERTY DESCRIPTION:

- 6,400± SF office/warehouse: 1,900± SF office; 4,500± SF warehouse
- 0.38± AC lot
- Office layout: large reception/lobby, 3 offices, break room and 2 restrooms
- 2,100± SF fenced-in yard area in rear
- Zoned B-3: Community Business
- Air conditioned warehouse
- (2) dock-high loading doors; (2) 12x10 roll-up doors; (1) 12x10 ground-level door
- 1 mile from I-65

LEASE RATE: \$11.00/SF NNN

Jay Roberds, SIOR
251.753.1015 | jay@cre-mobile.com



**CRE
MOBILE**
CRE-MOBILE.COM



NO WARRANTY OR REPRESENTATION, EXPRESS OR IMPLIED, IS MADE AS TO THE ACCURACY OF THE INFORMATION CONTAINED HEREIN, AND THE SAME IS SUBMITTED SUBJECT TO ERRORS, OMISSIONS, CHANGE OF PRICE, RENTAL OR OTHER CONDITIONS, PRIOR SALE, LEASE OR FINANCING, OR WITHDRAWAL WITHOUT NOTICE, AND OF ANY SPECIAL LISTING CONDITIONS IMPOSED BY OUR PRINCIPALS. NO WARRANTIES OR REPRESENTATIONS ARE MADE AS TO THE CONDITION OF THE PROPERTY NOR ANY HAZARDS CONTAINED THEREIN ARE ANY TO BE IMPLIED.



DISTANCES TO NOTABLE LOCATIONS:

- I-65 1.0 mile
- Hwy 90 0.6 miles
- I-10 2.0 miles

Measured by driving distance

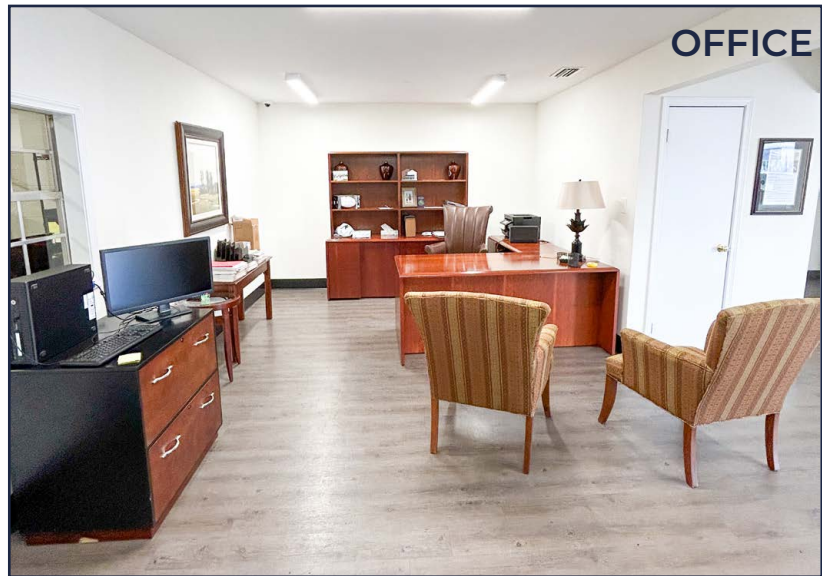
NO WARRANTY OR REPRESENTATION, EXPRESS OR IMPLIED, IS MADE AS TO THE ACCURACY OF THE INFORMATION CONTAINED HEREIN, AND THE SAME IS SUBMITTED SUBJECT TO ERRORS, OMISSIONS, CHANGE OF PRICE, RENTAL OR OTHER CONDITIONS, PRIOR SALE, LEASE OR FINANCING, OR WITHDRAWAL WITHOUT NOTICE, AND OF ANY SPECIAL LISTING CONDITIONS IMPOSED BY OUR PRINCIPALS. NO WARRANTIES OR REPRESENTATIONS ARE MADE AS TO THE CONDITION OF THE PROPERTY NOR ANY HAZARDS CONTAINED THEREIN ARE ANY TO BE IMPLIED.



RECEPTION/LOBBY



OFFICE



WAREHOUSE MEZZANINE



WAREHOUSE

