

PRIME OFFICE SPACE



HARTUNG AND NOBLIN, INC.



3010 HIGHLAND OAKS TERRACE
Tallahassee, FL 32301

CONTACT:

Chip Hartung

850-386-6160 o

850-980-4007 m

chiphartung@cbhnmail.com email

cbhncommercial.com website

FOR SALE

Property Information

ACRES

0.58 Acres

SQUARE FOOT

4,000 SF

Features

- New prime office building completed 2019
- Building located at the end of a cul-de-sac
- Exterior: brick, shingle roofing
- Interior: conference room, reception area, break room, several private offices
- Two suites (2,000 sf each) with 2 private restrooms
- Parcel ID #1133390000080
- Zoned Commercial Parkway (CP)

Area

Located just off Capital Circle SE between Park Ave & Apalachee Pkwy. Part of Highland Commercial Phase II

PRICE: \$620,000.00

The information shown or contained herein is believed to be accurate but is not warranted or guaranteed, is subject to errors, omissions and changes without notice and should be verified independently.

CBCWORLDWIDE.COM

©2017 Coldwell Banker Real Estate LLC, dba Coldwell Banker Commercial Affiliates. All Rights Reserved. Coldwell Banker Real Estate LLC, dba Coldwell Banker Commercial Affiliates fully supports the principles of the Equal Opportunity Act. Each Office is Independently Owned and Operated. Coldwell Banker Commercial and the Coldwell Banker Commercial Logo are registered service marks owned by Coldwell Banker Real Estate LLC, dba Coldwell Banker Commercial Affiliates.

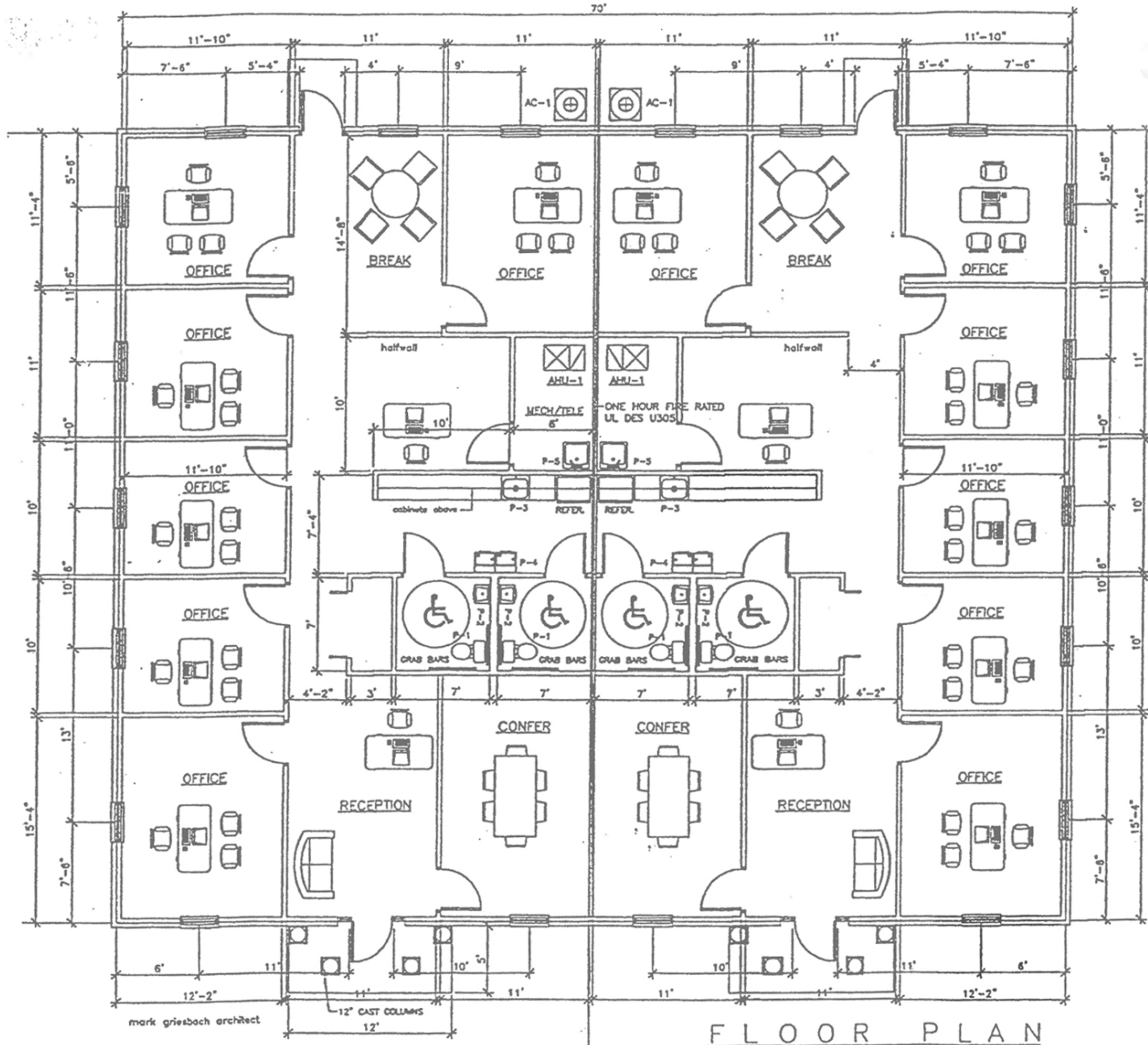
Coldwell Banker Commercial
HARTUNG AND NOBLIN, INC.

3303 Thomasville Rd, Suite #201

Tallahassee, FL 32308

850.386.6160

FLOOR PLAN



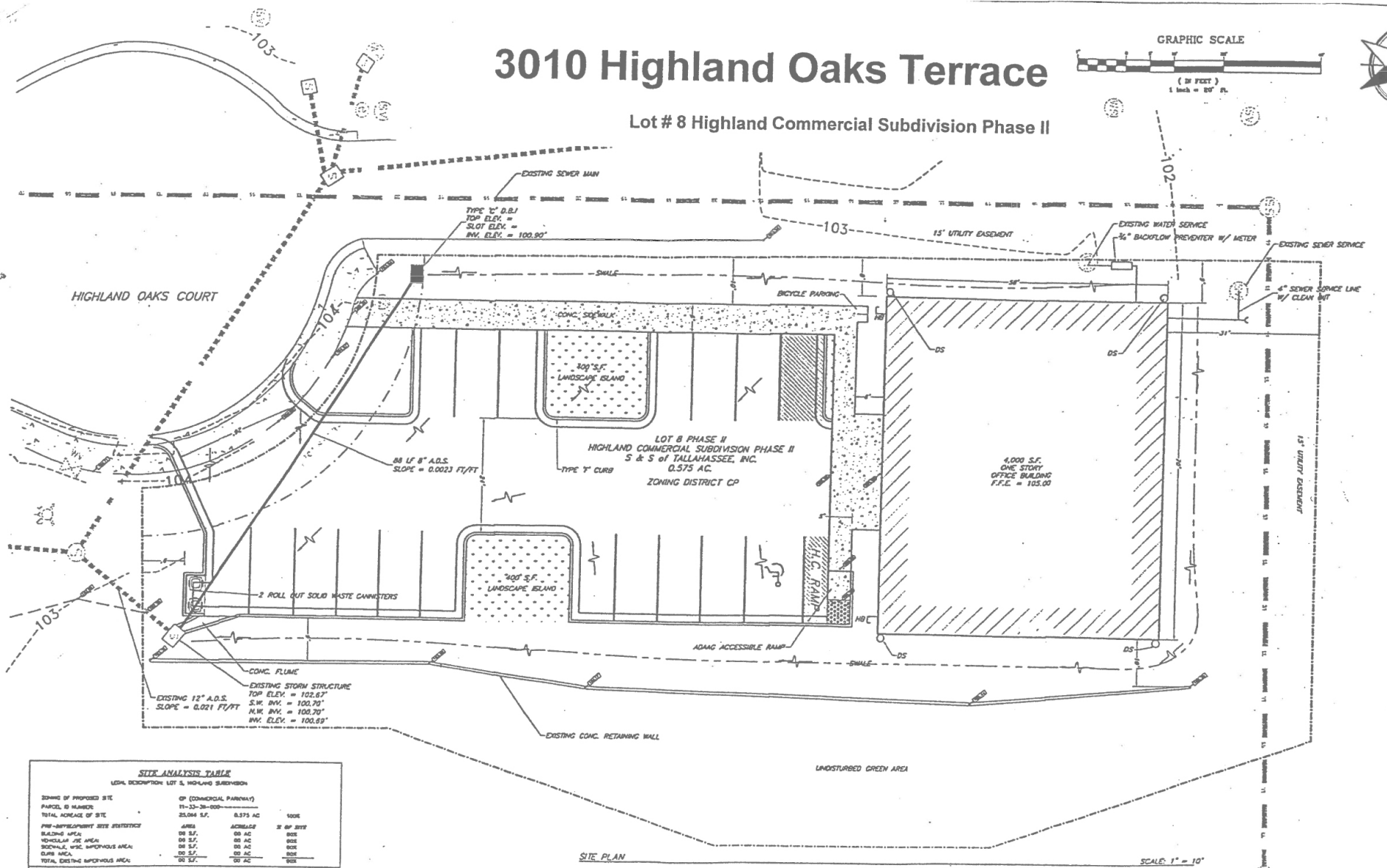
Suite #1

FLOOR PLAN

Suite #2

3010 Highland Oaks Terrace

Lot # 8 Highland Commercial Subdivision Phase II



SITE ANALYSIS TABLE
 LOT# 8, HIGHLAND COMMERCIAL SUBDIVISION

| ZONING OF PROPOSED SITE | CP (COMMERCIAL PARKING) |
|---------------------------------|-------------------------|
| PARCEL ID NUMBER | 11-33-28-000 |
| TOTAL ACRES OF SITE | 0.573 AC |
| PER-DEVELOPMENT SITE STATISTICS | |
| BUILDING AREA | 4,000 S.F. |
| NON-BUILDING USE AREA | 00 S.F. |
| SEWERAGE, WPC IMPROVEMENT AREA | 00 S.F. |
| CLUBS AREA | 00 S.F. |
| TOTAL EXISTING IMPROVEMENT AREA | 00 S.F. |

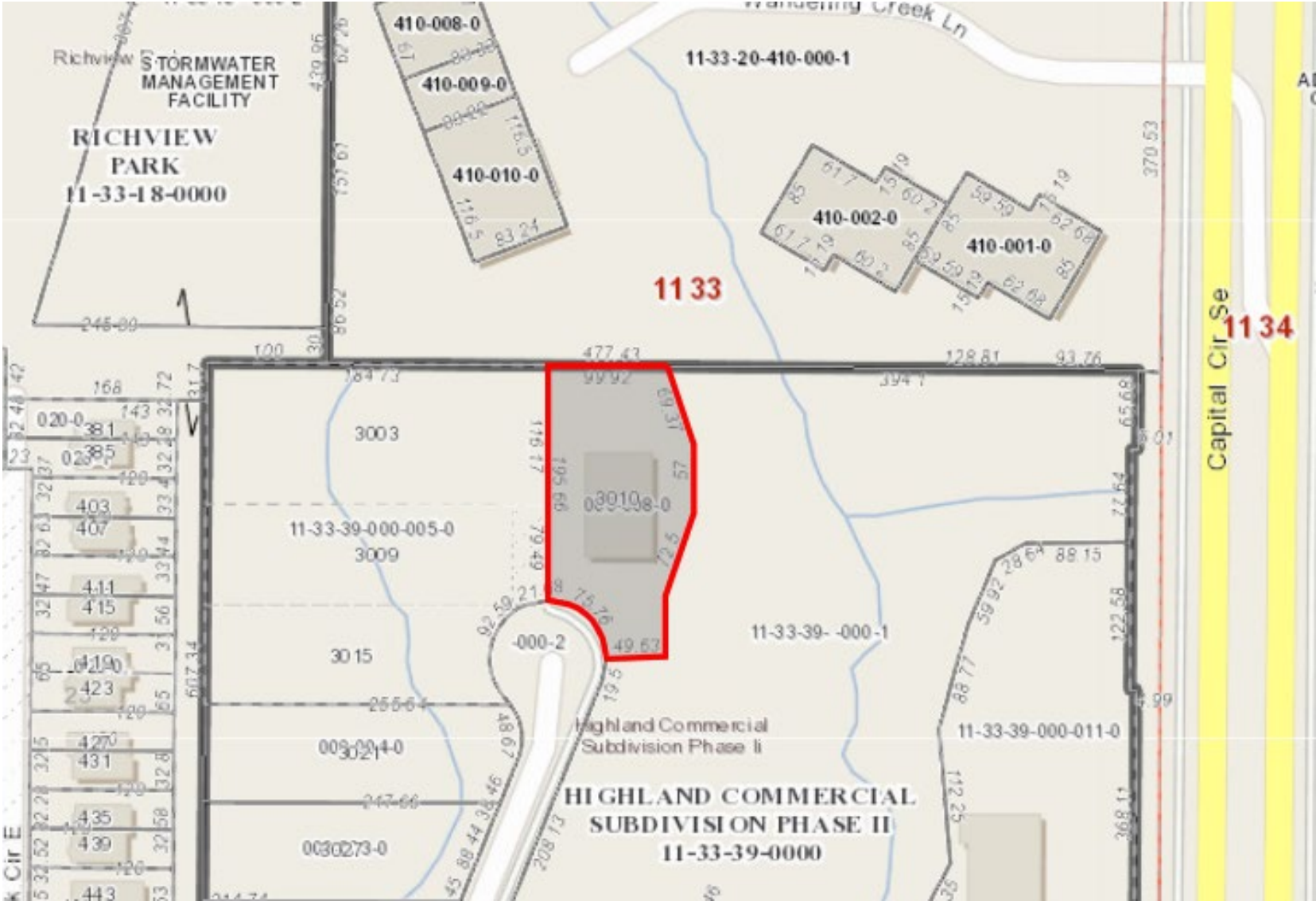
SITE PLAN

SCALE: 1" = 10'

GIS MAP



HARTUNG AND NOBLIN, INC.



The information shown or contained herein is believed to be accurate but is not warranted or guaranteed, is subject to errors, omissions and changes without notice and should be verified independently.

CBCWORLDWIDE.COM

©2017 Coldwell Banker Real Estate LLC, dba Coldwell Banker Commercial Affiliates. All Rights Reserved. Coldwell Banker Real Estate LLC, dba Coldwell Banker Commercial Affiliates fully supports the principles of the Equal Opportunity Act. Each Office is Independently Owned and Operated. Coldwell Banker Commercial and the Coldwell Banker Commercial Logo are registered service marks owned by Coldwell Banker Real Estate LLC, dba Coldwell Banker Commercial Affiliates.

Coldwell Banker Commercial
HARTUNG AND NOBLIN, INC.
3303 Thomasville Rd, Suite #201
Tallahassee, FL 32308
850.386.6160

PROPERTY & LOCATION MAP

