

Medical Office | For Lease

CBRE

# 1001 Medical Plaza

1001 Medical Plaza  
The Woodlands, TX 77380  
[www.cbre.com/properties](http://www.cbre.com/properties)

Move-In Ready Suites Available



Building owned and managed by  
**HEALTHCARE REALTY**

# 1001 MEDICAL PLAZA

1001 Medical Plaza | The Woodlands, TX 77380

Building owned and managed by

**HEALTHCARE REALTY**

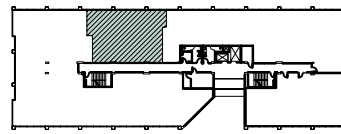
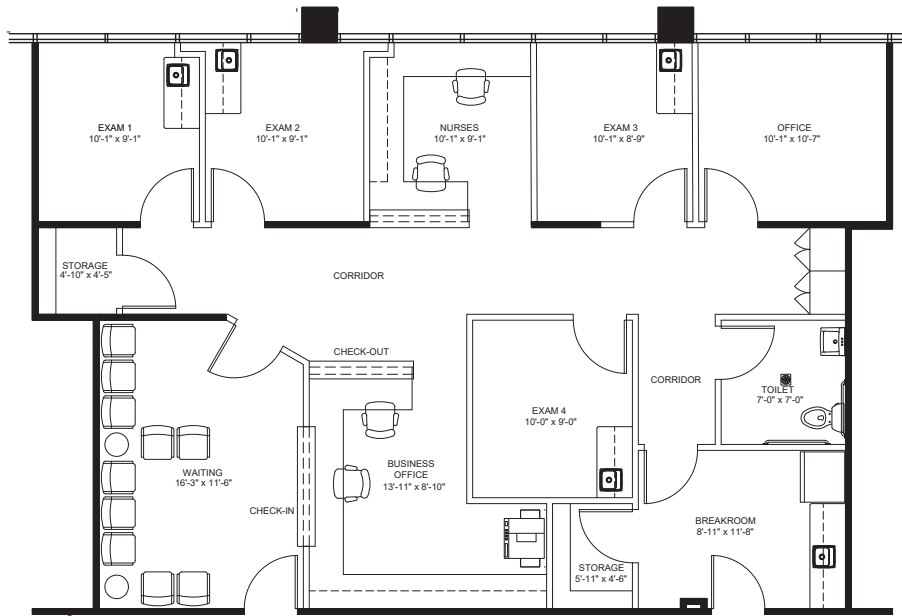


## Property Highlights

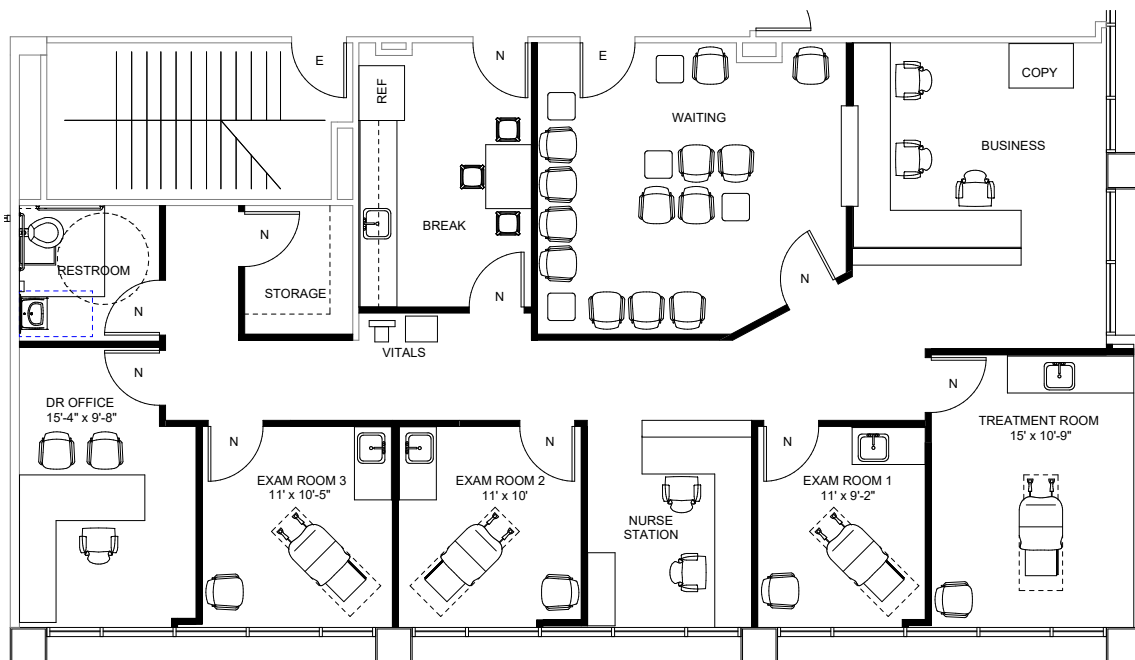
- + 39,910 RSF, 3-story Medical Office Building
- + Located directly across from Memorial Hermann The Woodlands Hospital and less than 4 miles south of Houston Methodist, Texas Children's, and CHI/St. Luke's The Woodlands Hospitals
- + Convenient access to I-45, abundant free surface parking for visitors, and covered parking for doctors
- + Convenient covered drop-off for patients
- + Move-in ready medical spec suite available

## Demographics

	1 MILE	3 MILES	5 MILES
Population - Estimated 2024	4,469	59,093	163,885
Population - 5-Year Projection	4,451	58,676	163,628
Median Age - Estimated 2024	48.9	41.0	38.3
Average Household Income - Estimated 2024	\$170,063	\$150,850	\$152,848



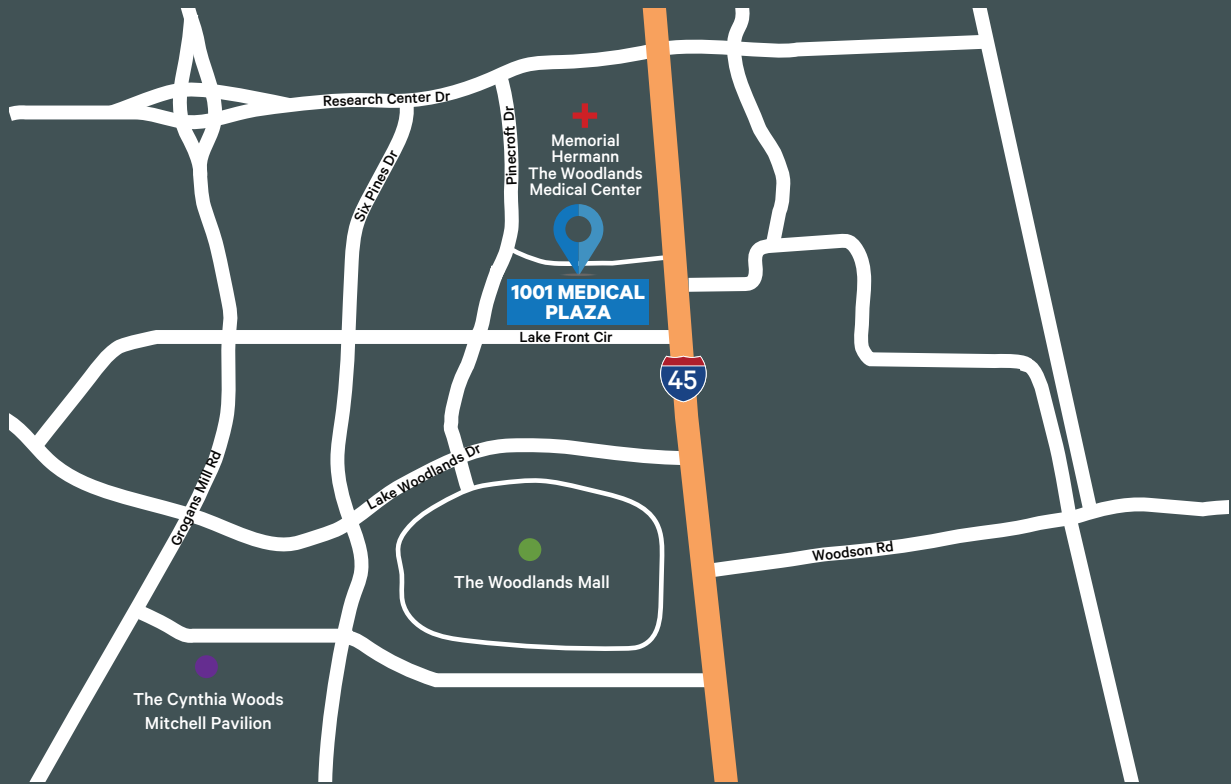
2nd Floor



# 1001 MEDICAL PLAZA

1001 Medical Plaza | The Woodlands, TX 77380

For Lease



## Contact Us

**Brandy Bellow Spinks**

Senior Vice President

T +1 713 577 1642

C +1 713 726 6100

brandy.bellow@cbre.com

Building owned and managed by  
**HEALTHCARE REALTY**



© 2024 CBRE, Inc. All rights reserved. This information has been obtained from sources believed reliable, but has not been verified for accuracy or completeness. You should conduct a careful, independent investigation of the property and verify all information. Any reliance on this information is solely at your own risk. CBRE and the CBRE logo are service marks of CBRE, Inc. All other marks displayed on this document are the property of their respective owners, and the use of such logos does not imply any affiliation with or endorsement of CBRE. Photos herein are the property of their respective owners. Use of these images without the express written consent of the owner is prohibited.

[www.cbre.com/properties](http://www.cbre.com/properties)

**CBRE**