



For Sublease

91,829 SF
Industrial Space

1923 Windsor Place

Fort Worth, TX 76110

Features:

Total Available SF 91,829 SF

Lease Expiration 4/30/29

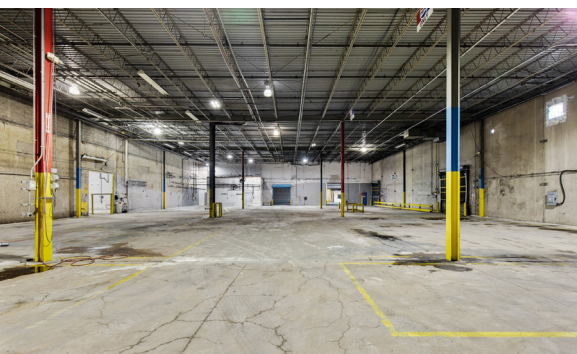
Availability 5/01/22

Year Built 1951

Clear Height 18'

Rail Specifications Fort Worth and Western Railroad; FWWR owns the rail; double spur, holds up to eight cars. Open to three Class 1 railroads: Union Pacific, BNSF & Kansas City Southern; offers service five days a week.

Rental Rate Call Advisor for Rate



Marshall Mays

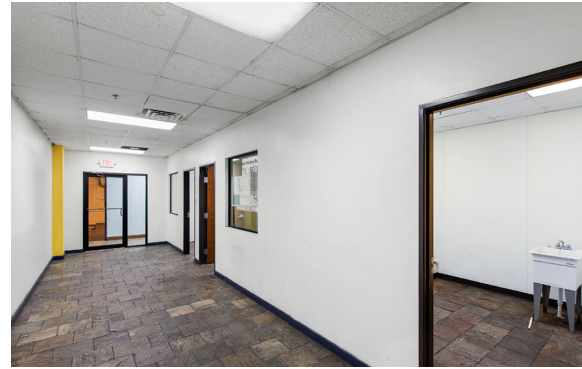
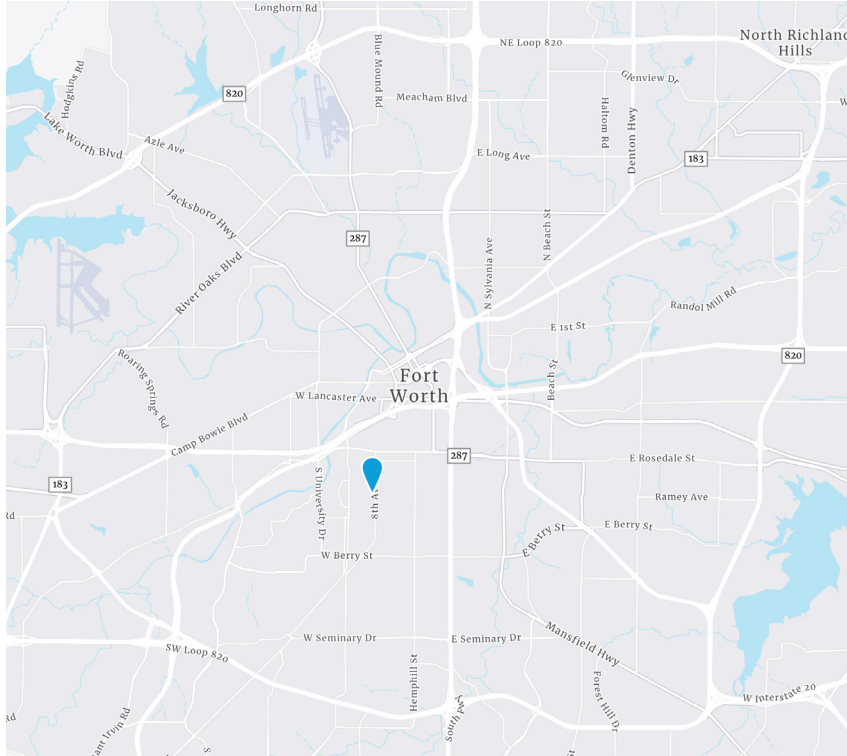
Vice President
+1 817 269 3574
marshall.mays@colliers.com

Hogan Harrison

Vice President
+1 214 697 4493
hogan.harrison@colliers.com
Contact for Pricing / Tours

1923 Windsor Place Fort Worth, TX 76110

Location Map



Marshall Mays

Vice President

+1 817 269 3574

marshall.mays@colliers.com

Hogan Harrison

Vice President

+1 214 697 4493

hogan.harrison@colliers.com

Copyright © 2024 Colliers International. Information herein has been obtained from sources deemed reliable, however its accuracy cannot be guaranteed. The user is required to conduct their own due diligence and verification.



colliers.com