

1512

EUREKA ROAD
Roseville, California

AVAILABLE
FOR LEASE



PROPERTY HIGHLIGHTS



PRESTIGIOUS EUREKA
CORPORATE PLAZA ADDRESS



ON-SITE OUTDOOR COURTYARD



EXTREMELY WELL-
MAINTAINED



TWO COMMON AREA
CONFERENCE ROOMS



FITNESS STUDIO WITH SHOWERS



RECENTLY REMODELED
COMMON AREAS & ELEVATORS



FIBER SERVICES AVAILABLE
FROM BOTH CONSOLIDATED
COMMUNICATIONS AND
COMCAST BUSINESS



ADJACENT TO ALL OF ROSEVILLE'S
MOST POPULAR RESTAURANTS:

- MIKUNI
- PAUL MARTIN'S
- FAT'S
- UNIVERSITY OF BEER



LOCAL TO BOUTIQUE AND
REGIONAL SHOPPING & SERVICES:

- WESTFIELD GALLERIA
- CREEKSIDE CENTER
- THE FOUNTAINS
- STARBUCKS

CITY OF ROSEVILLE



ROSEVILLE'S 2022 POPULATION IS
ESTIMATED TO BE 149,141, PER U.S.
CENSUS, WITH MEDIAN AGE OF 37.7
YEARS OLD.



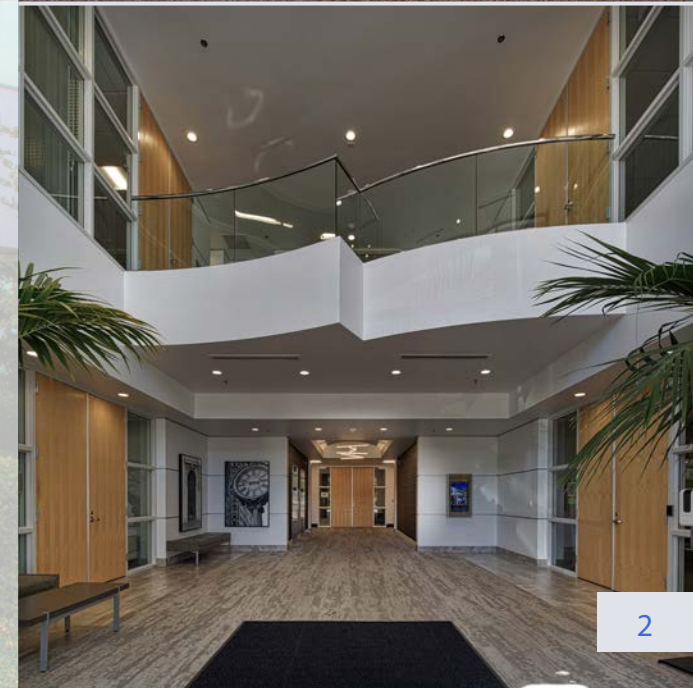
ROSEVILLE WAS NAMED THE 8TH BEST
PLACE TO LIVE IN THE UNITED STATES
BY LIVABILITY.COM IN 2021.

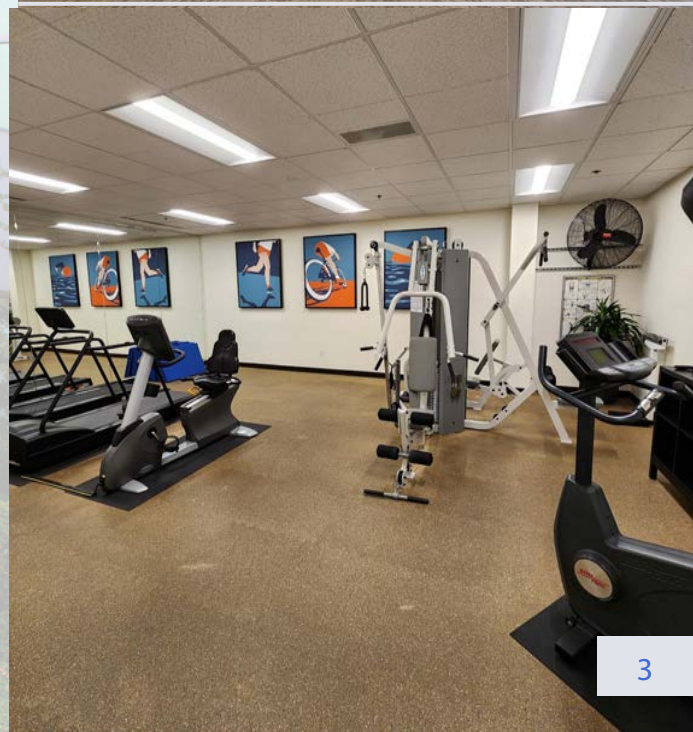


GREAT QUALITY OF LIFE, SCHOOLS,
HOUSING, BUSINESSES AND RETAIL.



ROSEVILLE OWNS AND OPERATES ITS
UTILITIES, INCLUDING WATER, SEWER
AND ELECTRIC. ROSEVILLE ELECTRIC
PLAYS A BIG ROLE IN ATTRACTING
BUSINESS WITH ITS COMPETITIVE
RATES AND RELIABLE SERVICE.



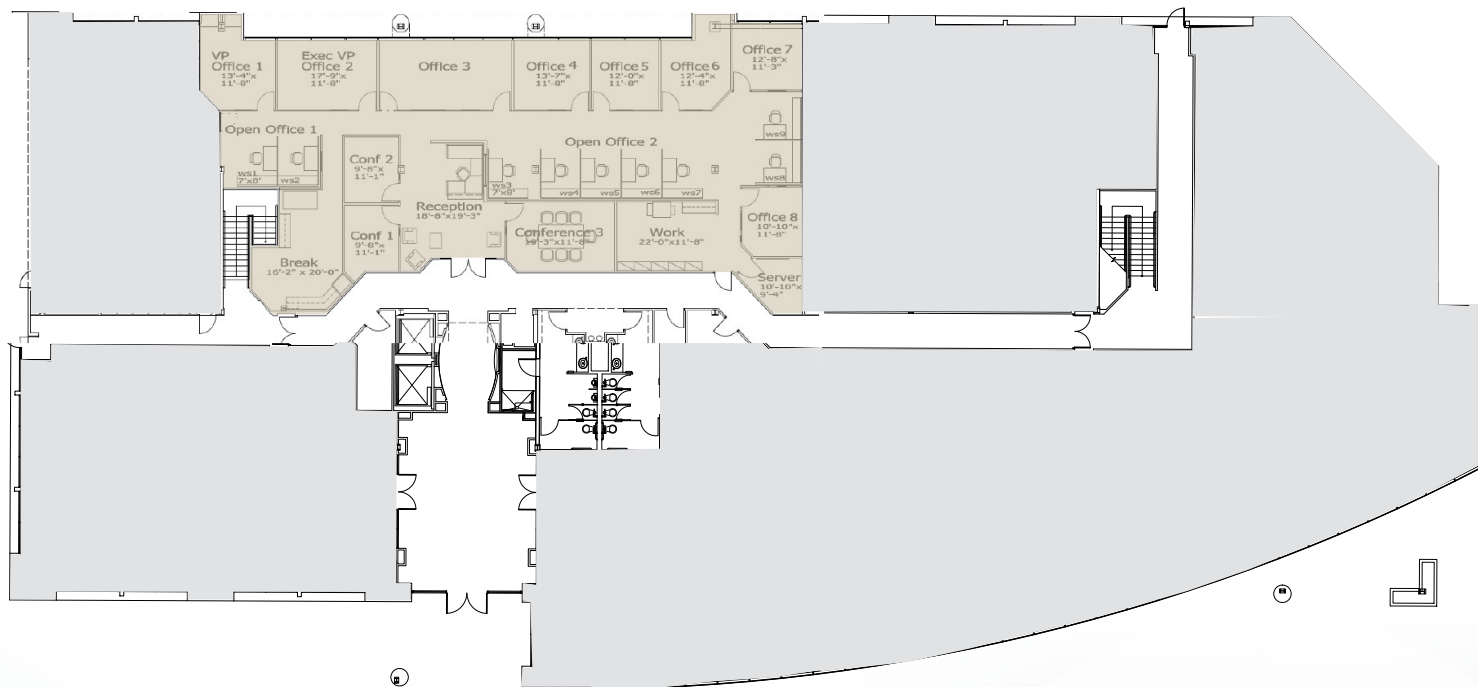


AVAILABLE SUITES FOR LEASE

LEASE RATE: \$2.45 PSF, FULL SERVICE

FLOOR PLAN
1ST FLOOR

SUITE 150 | ±4,884 RSF
WITH 60 DAY NOTICE

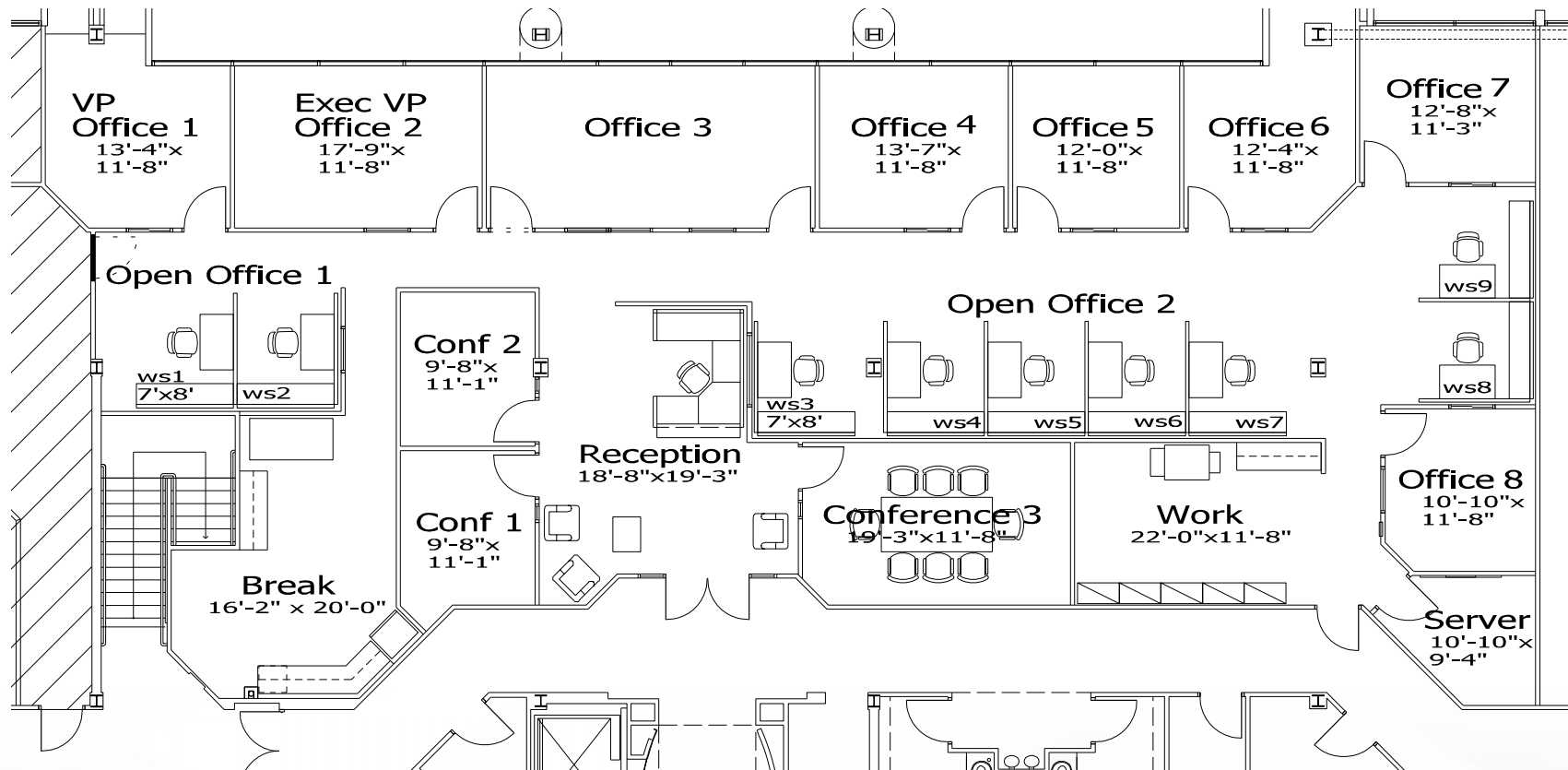


FLOOR PLAN IS NOT TO SCALE -- ALL DIMENSIONS ARE APPROXIMATE.

UPDATED SUITE PLANS

LEASE RATE: \$2.45 PSF, FULL SERVICE

SUITE 150
±4,884 SF



FLOOR PLAN IS NOT TO SCALE -- ALL DIMENSIONS ARE APPROXIMATE.

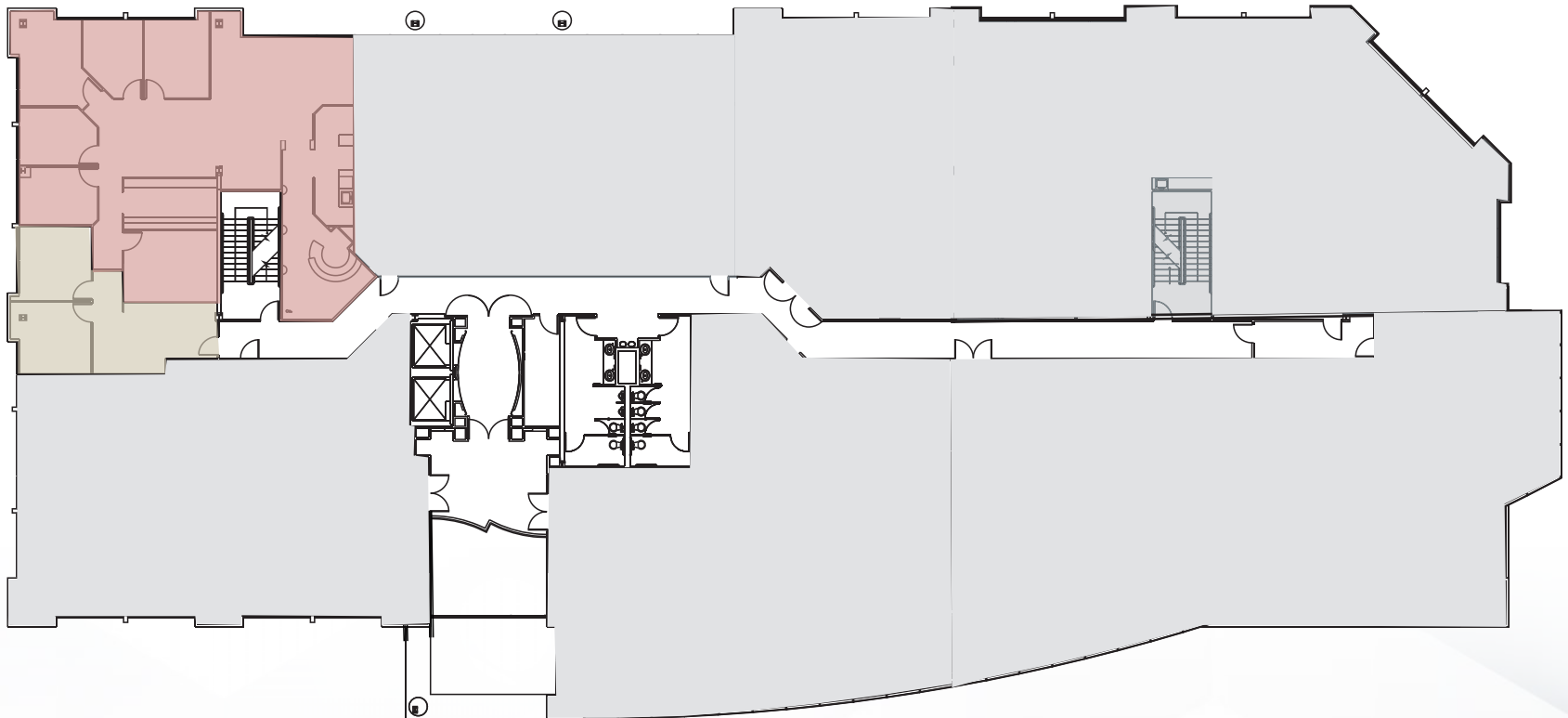
AVAILABLE SUITES FOR LEASE

LEASE RATE: \$2.45 PSF, FULL SERVICE

FLOOR PLAN 2ND FLOOR

SUITE 220* | $\pm 2,507$ RSF
AVAILABLE NOW

SUITE 230*
 ± 637 RSF
AVAILABLE



*SUITES CAN BE COMBINED FOR $\pm 3,144$ RSF

FLOOR PLAN IS NOT TO SCALE -- ALL DIMENSIONS ARE APPROXIMATE.

UPDATED SUITE PLANS

LEASE RATE: \$2.45 PSF, FULL SERVICE

SUITE 220 AND 230
±3,144 SF



FLOOR PLAN IS NOT TO SCALE -- ALL DIMENSIONS ARE APPROXIMATE.

AREA AMENITIES



1512

EUREKA ROAD, ROSEVILLE, CA

EXCLUSIVELY LISTED BY:

KEVIN LARSCHIED

Executive Vice President

Lic. 00816790

+1 916 768 9329

kevin.larscheid@cbre.com

SCOTT RUSH

First Vice President

Lic. 01228497

+1 916 412 6170

scott.rush@cbre.com

www.cbre.com/kevin.larscheid

© 2025 CBRE, Inc. All rights reserved. This information has been obtained from sources believed reliable, but has not been verified for accuracy or completeness. You should conduct a careful, independent investigation of the property and verify all information. Any reliance on this information is solely at your own risk. CBRE and the CBRE logo are service marks of CBRE, Inc. All other marks displayed on this document are the property of their respective owners, and the use of such logos does not imply any affiliation with or endorsement of CBRE. Photos herein are the property of their respective owners. Use of these images without the express written consent of the owner is prohibited.

