



FOR SALE

670 Opper Street

Escondido, CA 92029



±10,025 SF Industrial Building

670 Opper Street | Escondido, CA 92029



10,025 SF

Building Size

\$3,508,750

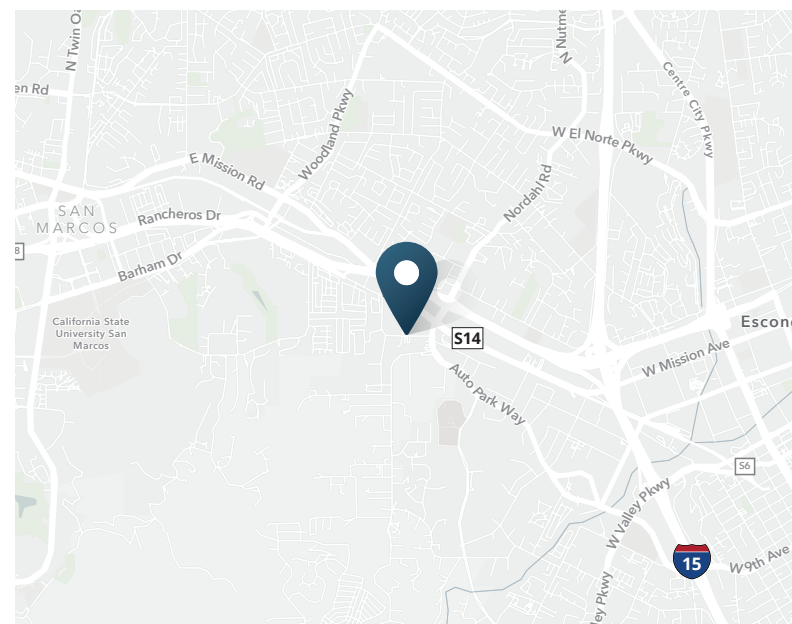
Sale Price

Single Tenant
Building
with Bonus
Mezzanine

(not included in square
footage)

PROPERTY HIGHLIGHTS

- 10,025 SF building with yard
- 24' warehouse clear height
- 5 grade-level doors (3 oversized)
- Clear-span warehouse (no columns)
- Zoned M-1, Escondido
- 400 Amp, 120/208 V, 3-phase 4-wire
- APN: 228-420-31
- Easy access to Highway 78 and I-15
- Best small building in Escondido

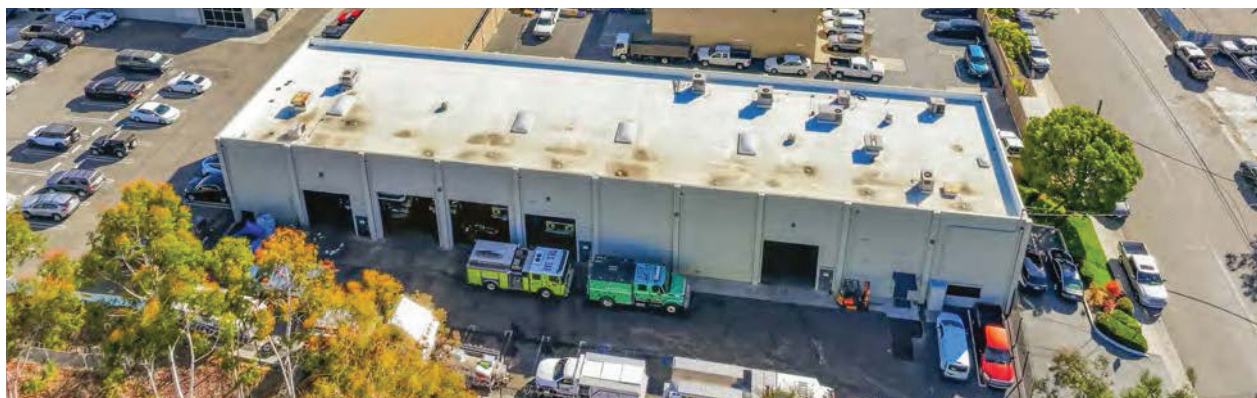
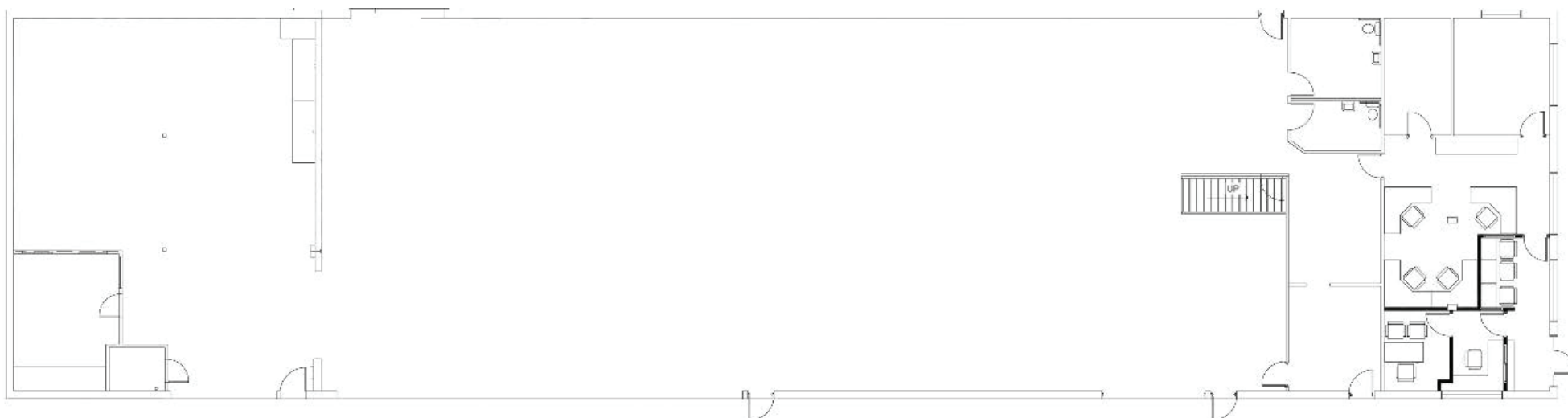


Floor Plan

670 Opper Street | Escondido, CA 92029

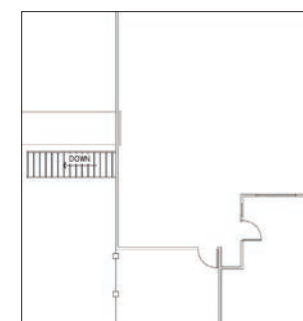


FIRST FLOOR



MEZZANINE LEVEL

not included in square footage

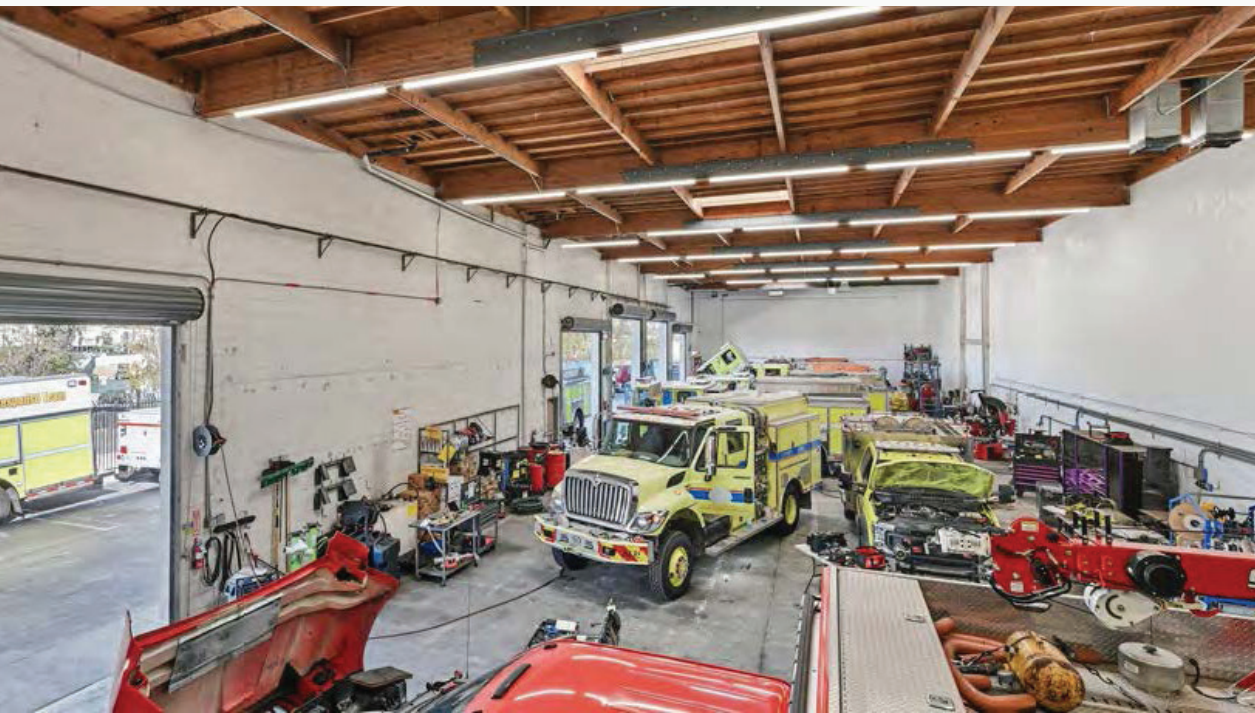
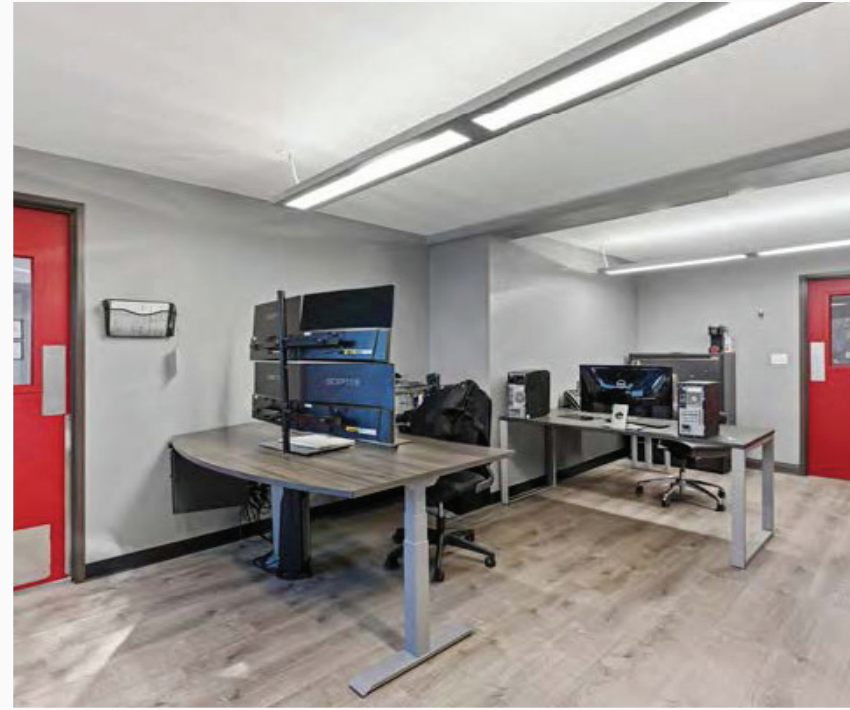


10,025 SF

- Reception
- Private Offices
- Bullpen
- Clear-Span Warehouse
- Restrooms
- Bonus Mezzanine

Property Photos

670 Opper Street | Escondido, CA 92029



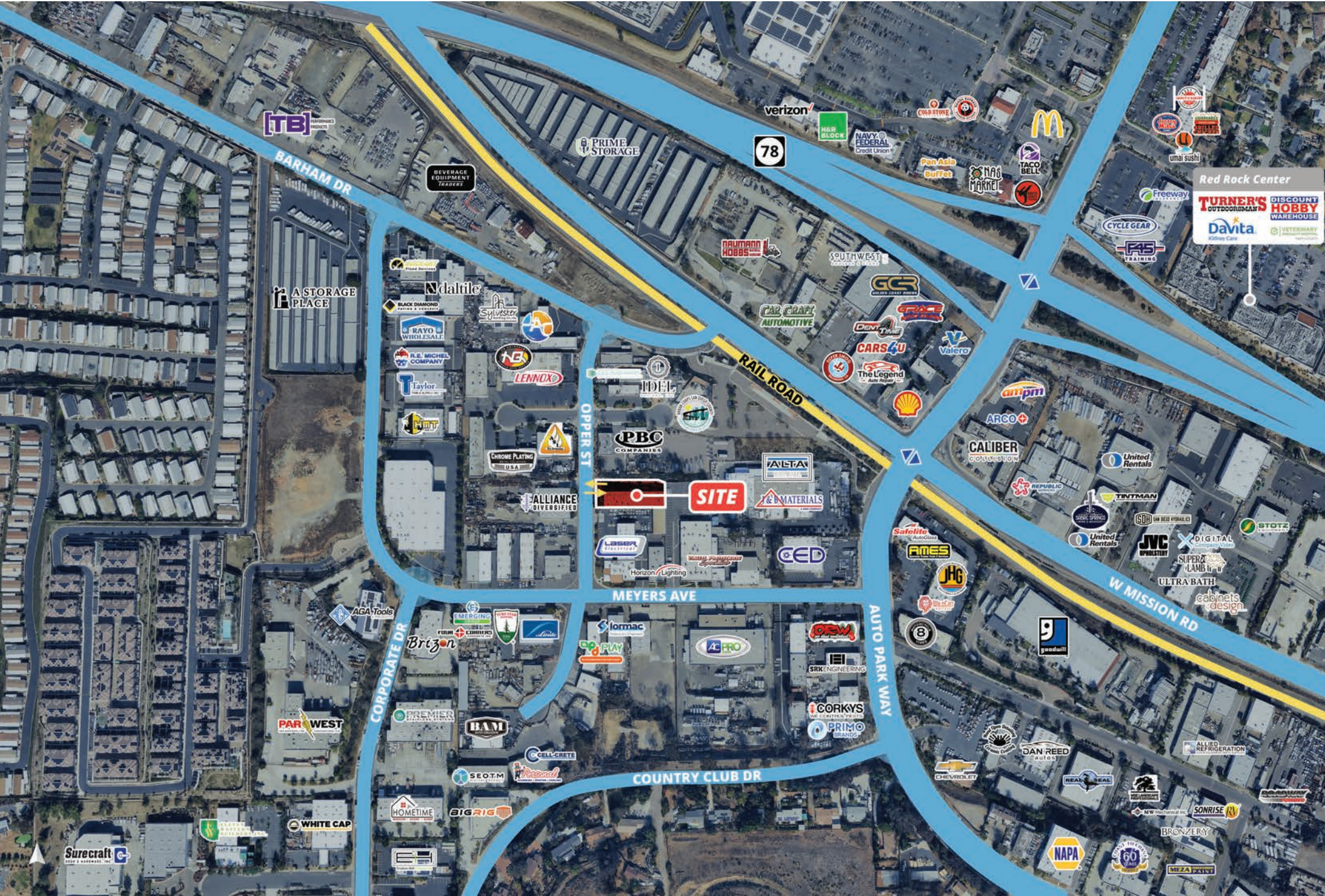
Site Aerial

670 Opper Street | Escondido, CA 92029



Corporate Neighbors & Access

670 Opper Street | Escondido, CA 92029



Escondido Submarket

670 Opper Street | Escondido, CA 92029

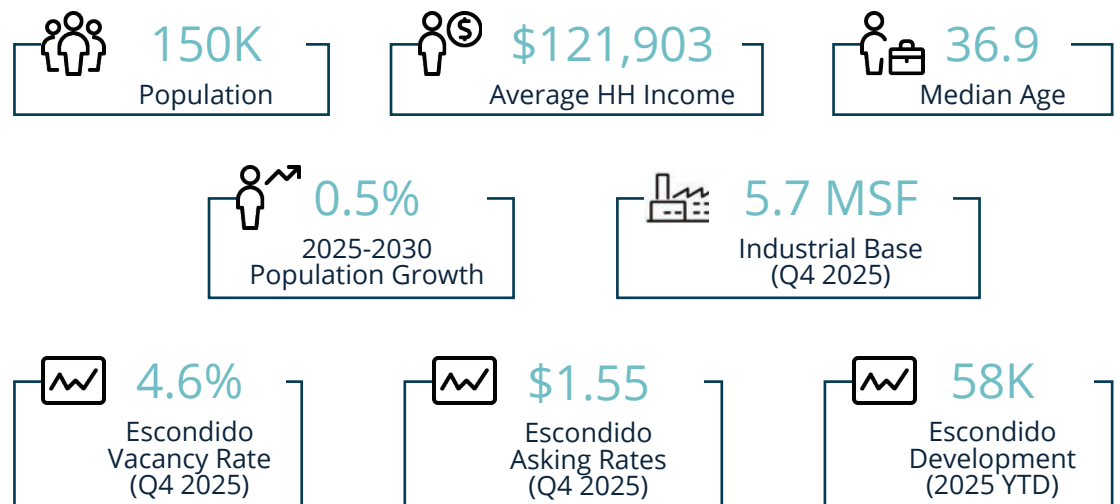


ESCONDIDO SUBMARKET

Set within a broad valley in the coastal mountains of Southern California, Escondido, Spanish for “hidden”, is located approximately 18 miles inland, 30 miles northeast of San Diego, and 100 miles south of Los Angeles. Framed by rolling hills and historic avocado and citrus groves, Escondido offers a diverse, dynamic environment that blends small-town character with metropolitan energy.

From technology and life sciences to communications and advanced industries, North County is where innovation meets lifestyle. Along the forward-thinking communities of the Highway 78 Corridor, creative leaders and entrepreneurs in Escondido converge to build a walkable, live-work-play environment. With a revitalized downtown district, Escondido is a vibrant urban hub where talent, ideas, and opportunity come together. Escondido offers a compelling environment for growth and is where the next generation of innovation takes shape.

AREA DEMOGRAPHICS



San Diego County Map

670 Opper Street | Escondido, CA 92029



SAN DIEGO COUNTY MAP

2 Minutes
To SR 78

5 Minutes
To I-15

16 Minutes
To I-5

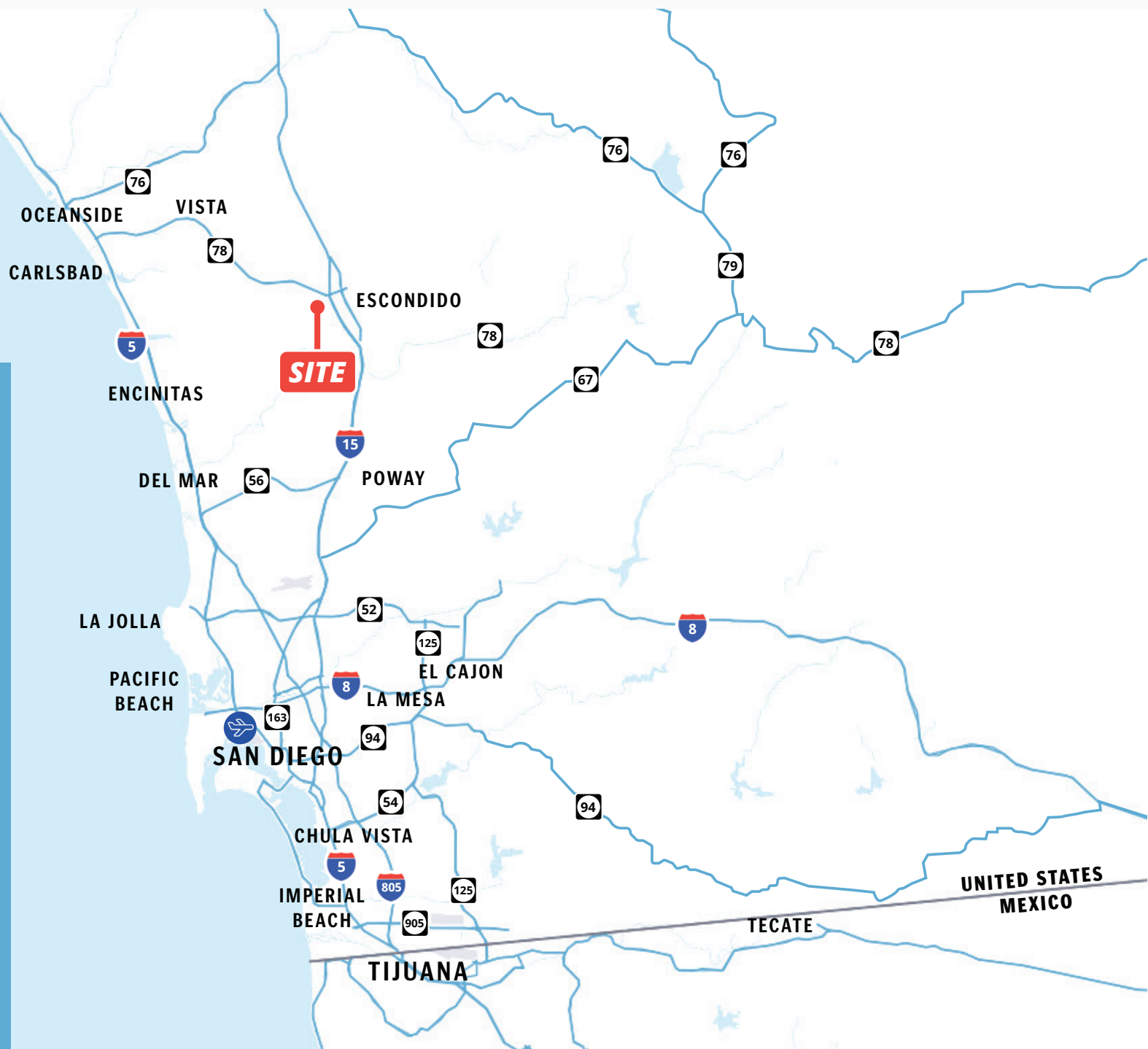
28 Minutes
To Riverside County

30 Minutes
To Downtown San Diego

35 Minutes
To Orange County

35 Minutes
To San Diego International Airport

45 Minutes
To US/Mexico Border





SRS Real Estate Partners
215 Highway 101, Suite 209
Solana Beach, CA 92075

Hank Jenkins

Vice President

602.882.0138

hank.jenkins@srsre.com

CA License No. 01981328

Tucker Hohenstein, SIOR, MBA

Executive Vice President

858.336.4104

tucker.hohenstein@srsre.com

CA License No. 00999360

Mike Erwin, SIOR, MBA

Executive Vice President

760.807.0909

mike.erwin@srsre.com

CA License No. 01242826

SRSRE.COM/Industrial

© SRS Real Estate Partners

The information presented was obtained from sources deemed reliable;
however SRS Real Estate Partners does not guarantee its completeness or accuracy.