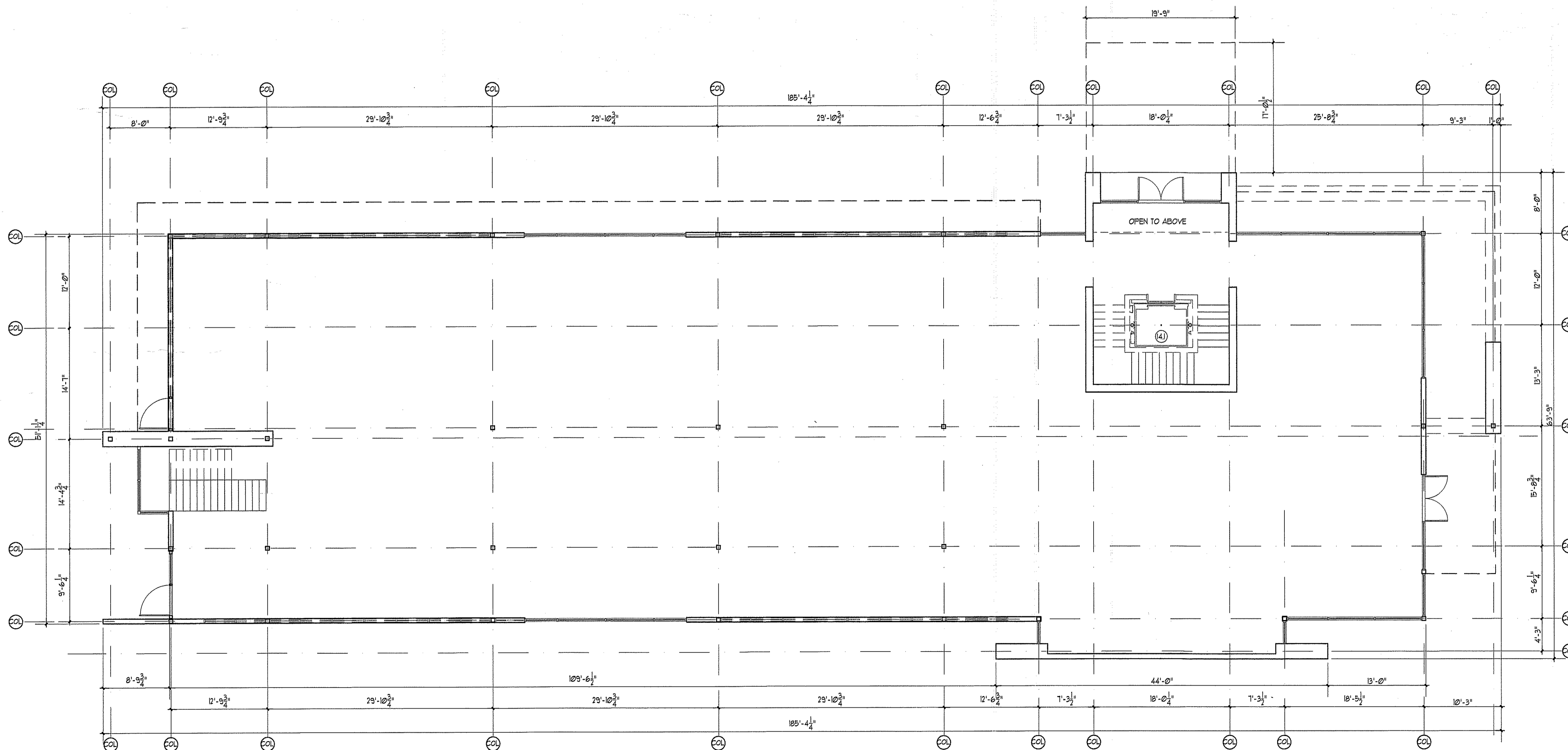
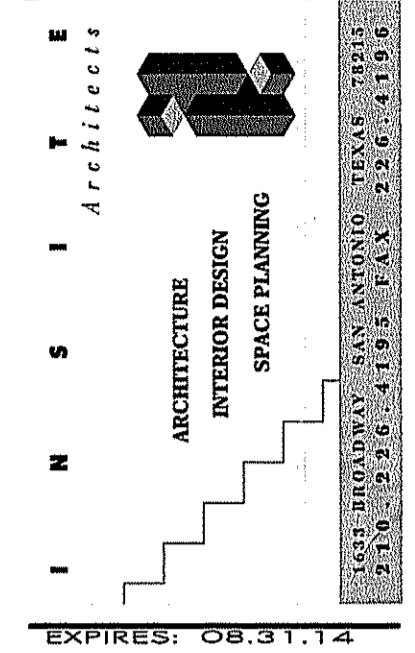


A
B
C
D
E



- DIVISION 1
- 1.1 NOT USED
- DIVISION 2 SITE CONSTRUCTION
- 2.1 CONC. DRIVEWAY APPROACH TO COMPLY W/ C.O.S.A. STDS. AS SCHED. REINF. 3000 PSI CONC.
- 2.2 SANDBLASTED CONC. BANDS SET IN SALT FINISH SIDEWALK WITH CONTROL JOINTS AS SCHED. REINF. 3000 PSI CONC.
- 2.3 EXISTING STREET TO REMAIN
- 2.4 T.A.S. COMPLIANT H.C. PARKING SIGNAGE
- 2.5 EXISTING TREES TO REMAIN PROVIDE PROTECTION AS REQUIRED BY COSA GUIDELINES
- 2.6 2"x2" X³/₄" CORTEN STL. FENCE POSTS @ 5'0" O.C. W/CORTEN 6'0" H. STL. PANELS FENCED DUMPSTER AREA W/ PAIR SWINGING GATES AND 3'0"W. PEDESTRIAN GATE
- 2.7 2"x2" X³/₄" CORTEN STL. FENCE POSTS @ 5'0" O.C. W/CORTEN 3'0" H. STL. PANELS
- 2.8 COVERED PARKING PARKING STRUCTURE W/ LIGHTING
- 2.9 COVERED BUILDING DROP OFF
- 2.10 NEW PARKING LOT STRIPING
- 2.11 NOMINAL 6" HIGH SQUARE REINF. CONCRETE CURB
- 2.12 ASPHALT PAVED PARKING LOT
- 2.13 PAINTED HANDICAP SYMBOL
- 2.14 PLANTER AREA, RE: LARCH DWGS.
- 2.15 OUTDOOR WAITING AREA W/ COMPACTED CHAT WALKING SURFACE
- 2.16 BLACK PEBBLE PLANTER AREA
- 2.17 EXISTING CURB TO REMAIN
- 2.18 NEW STREET APPROACH PER C.O.S.A. BQMTS.
- 2.19 EXISTING SHARED DRIVE
- 2.20 NEW SHADE TREE, RE: LARCH DWGS.
- 2.21 2"x2" X³/₄" CORTEN STL. FENCE POSTS @ 5'0" O.C. W/CORTEN 4'0" H. STL. PANELS TRASH BIN ENCLOSURE
- 2.22 HANDICAP AISLE STRIPING TO COMPLY W/ T.A.S.
- 2.23 EXPOSED FORMWORK REINF. CONC. 8"W. X 2'0" H. WALLS
- 2.24 "DARK SKY" PARKING LOT FIXTURE
- 2.25 LINEAR WATER FEATURE SET IN EXPOSED FORMWORK WALL
- 2.26 SANDBLASTED REINF. CONC. WALK PAD SET IN PEBBLE PLANTER
- DIVISION 3 CONCRETE
- 3.1 INSULATED STRUCTURAL WALL PANEL W/ EXPOSED FORMWORK
- 3.2 SAWCUT JOINT AS SCHED.
- 3.3 STRUCTURAL REINFORCED CONC. SLAB, RE: STRUC. DWGS.
- DIVISION 4 MASONRY
- 4.1 NOT USED
- DIVISION 5 METALS
- 5.1 STEEL BEAM AS DET. & SCHED.; RE: STRUCT.
- 5.2 STEEL COLUMN AS DET. & SCHED.; RE: STRUCT.
- 5.3 STL. CANOPY SUPPORTS
- 5.4 ST. STL. HANDRAIL SYSTEM.
- 5.5 STEEL CANOPY FRAME RE: STRUC.
- 5.6 STL. GREEN WALL SUPPORT FRAME
- 5.7 ST. STL. CABLES
- DIVISION 6 WOODS AND PLASTICS
- 6.1 IPE WOOD DECK 1X4 W/ CONCEALED FASTENER FLOATING DECK
- DIVISION 7 THERMAL/MOISTURE PROTECTION
- 7.1 45 MIL T.P.O. ROOF SYSTEM OVER PROTECTION BOARD OVER TAPERED R30 INSULATION
- 7.2 CONTINUOUS METAL DRIP FLASHING-BERRIDGE 24 GA. GALVALUME OR EQUAL. PREFINISHED BERRIDGE METALLIC COLOR FLAT PANEL SYSTEM.
- 7.3 GALVALUME BERRIDGE HR.16 PANEL
NOTE: OUTSIDE CORNERS TO BE WRAPPED PANEL
- 7.4 MTL. CAP FLASHING AS SCHED.-BERRIDGE 24 GA. GALVALUME OR EQUAL
- 7.5 MTL. SCUPPER AS SCHED.-BERRIDGE 24 GA. GALVALUME OR EQUAL
- 7.6 MTL. FLASHING/COUNTERFLASHING-BERRIDGE 24 GA. GALVALUME OR EQUAL
- 7.7 SLOPED CRICKET
- 7.8 ALUM. WRAP TO MATCH WINDOW FINISH-TO INCLUDE COLUMN AND BEAM WRAP.
- 7.9 WALL FLASHING AND COUNTERFLASHING-BERRIDGE 24 GA. GALVALUME OR EQUAL
- 7.10 RIDGE CAP FLASHING-BERRIDGE 24 GA. GALVALUME OR EQUAL
- 7.11 ROOF JACK AS REQUIRED BY ROOF SYSTEM
- 7.12 MTL. FASCIA DRIP FLASHING, 24 GA GALVALUME
- 7.13 ROOF PAD WALKWAY SYSTEM-EXTEND AROUND ALL ROOFTOP EQUIPMENT.
- 7.14 "GREEN" ROOF TRAY SYSTEM-FIRESTONE SKYSCAPE VEGETATIVE ROOF SYSTEM OR EQUAL W/ DRIP IRRIGATION SYSTEM
- DIVISION 8 DOOR AND WINDOWS
- 8.1 INSULATED ALUM. STOREFRONT
- 8.2 KALWALL LUMIRA PANEL SYSTEM- REVERSE SHOJI PANEL
- 8.3 KAL WALL PANEL SYSTEM WINDOW INSERT
- 8.4 KALWALL STANDARD PANEL SYSTEM- REVERSE SHOJI PANEL
- 8.5 KALWALL CANOPY PANEL-REVERSE SHOJI PANEL
- 8.6 INSULATED PANEL INSERT INTO STOREFRONT SYSTEM.
- DIVISION 9 FINISHES
- 9.1 NOT USED
- DIVISION 10 SPECIALTIES
- 10.1 BUILDING SIGNAGE BY OWNER
- 10.2 650 GALLON GALVANIZED CISTERN TANK TO STORE AIR CONDITIONER CONDENSATE. WATER-TANKS-FORLESS.COM OR EQUAL
- DIVISION 11 EQUIPMENT
- 11.1 NOT USED.
- DIVISION 12 FINISHINGS
- 12.1 NOT USED.
- DIVISION 13 SPECIAL CONSTRUCTION
- 13.1 NOT USED.
- DIVISION 14 CONVEYING SYSTEMS
- 14.1 3500# (3) LEVEL ELEVATOR
- DIVISION 15 MECHANICAL
- 15.1 PLUMBING FIXTURES AS SCHED.
- 15.2 MECHANICAL EQUIP. AS SCHED.
- DIVISION 16 ELECTRICAL
- 16.1 ELECTRICAL LIGHT FIXTURE AS SCHED.



THESE DRAWINGS ARE INCOMPLETE. NOT TO BE USED FOR PERMIT AND/OR CONSTRUCTION. FOR COORDINATION AND REVIEW ONLY. JOSEPH M. SMITH/AAA TX REG. #15214

CENTERVIEW MARKET PLACE
 MEDICAL OFFICE
 NW LOOP 410 @ CALLAGHAN RD. SAN ANTONIO, TX 78228

This drawing and its reproductions are the property of the architect and may not be reproduced, published, or used in any way without the permission of the architect.

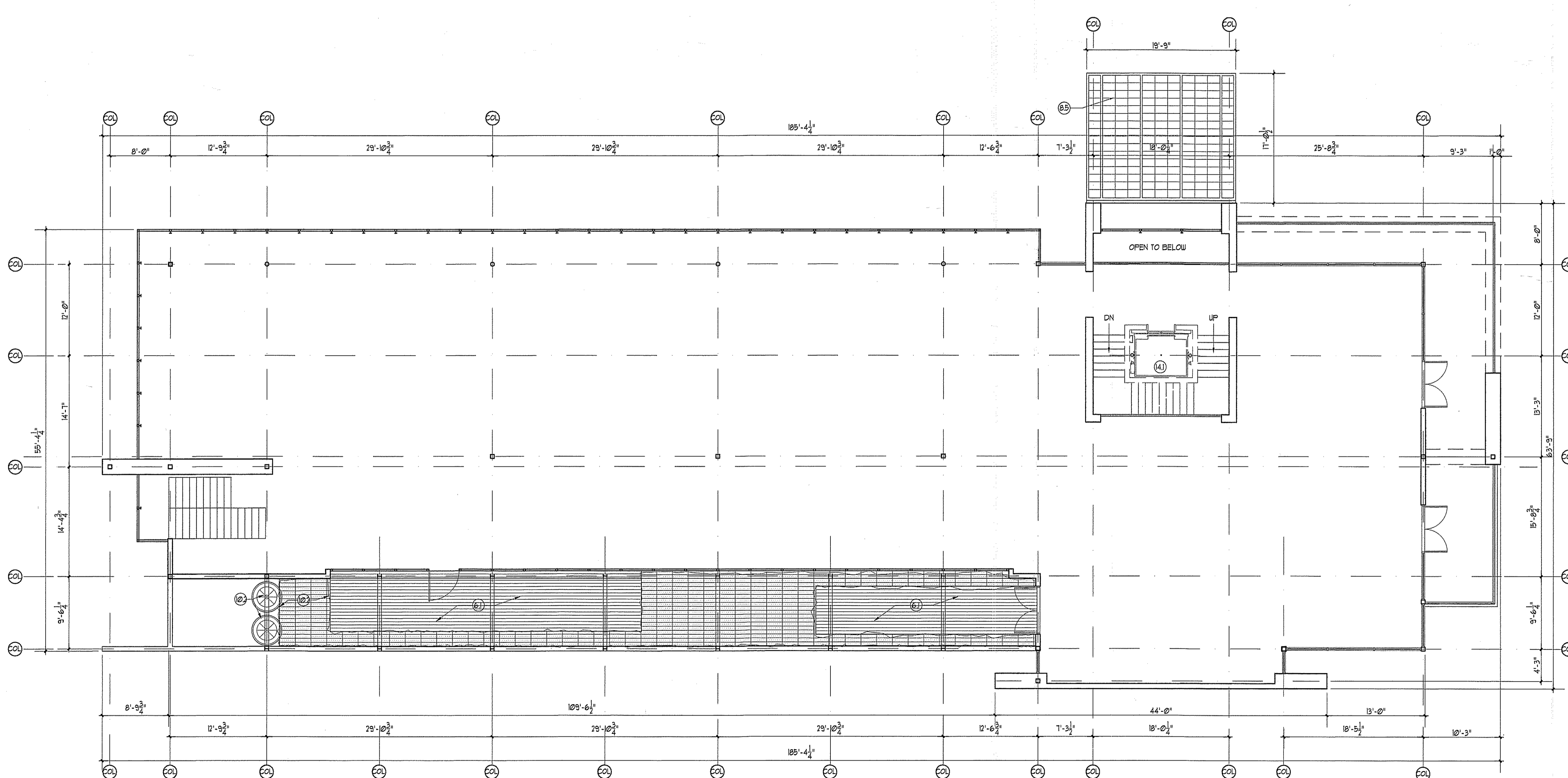
DRAWN	STAFF
CHECKED	JMS
DATE	09.13.13
PROJECT NO.	2404
ISSUE DATES	
09.13.13	REVIEW
10.07.13	REVIEW
12.10.13	REVIEW
12.17.13	SD-PRICING

SHEET TITLE:
firstlevel.FLOOR PLAN

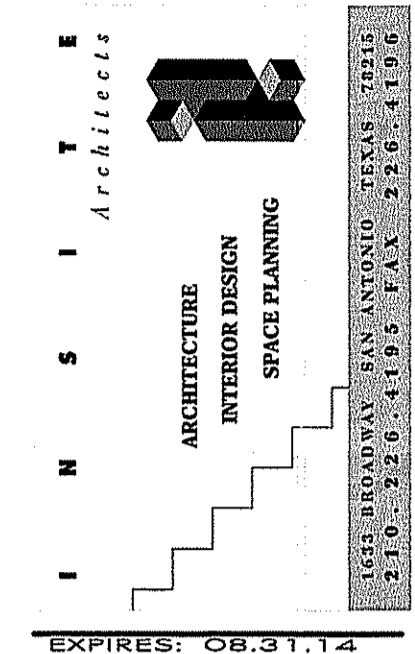
SHEET NO.
A2.0

01 firstlevel.FLOOR PLAN
SCALE: 1/8" = 1'-0" @ 8,800 GROSS SF.

A
B
C
D
E



- DIVISION 1
1.1 NOT USED
- DIVISION 2 SITE CONSTRUCTION
- 2.1 CONC. DRIVEWAY APPROACH TO COMPLY W/ C.O.S.A. STDS. AS SCHED. REINF. 3000 PSI CONC.
- 2.2 SANDBLASTED CONC. BANDS SET IN SALT FINISH SIDEWALK WITH CONTROL JOINTS AS SCHED. REINF. 3000 PSI CONC.
- 2.3 EXISTING STREET TO REMAIN
- 2.4 T.A.S. COMPLIANT H.C. PARKING SIGNAGE
- 2.5 EXISTING TREES TO REMAIN PROVIDE PROTECTION AS REQUIRED BY COSA GUIDELINES
- 2.6 2"x2" 1/8" CORTEN STL FENCE POSTS @ 5'-0" O.C. W/CORTEN 6'-0" H. STL PANELS FENCED DUMPSTER AREA W/ PAIR SWINGING GATES AND 3'-0" W. PEDESTRIAN GATE
- 2.7 2"x2" 1/8" CORTEN STL FENCE POSTS @ 5'-0" O.C. W/CORTEN 3'-0" H. STL PANELS
- 2.8 COVERED PARKING PARKING STRUCTURE W/ LIGHTING COVERED BUILDING DROP OFF
- 2.9 NEW PARKING LOT STRIPING
- 2.10 NOMINAL 6" HIGH SQUARE REINF. CONCRETE CURB
- 2.12 ASPHALT PAVED PARKING LOT
- 2.13 PAINTED HANDICAP SYMBOL
- 2.14 PLANTER AREA, RE: LARCH DWGS.
- 2.15 OUTDOOR WAITING AREA W/ COMPACTED CHAT WALKING SURFACE
- 2.16 BLACK PEBBLE PLANTER AREA
- 2.17 EXISTING CURB TO REMAIN
- 2.18 NEW STREET APPROACH PER C.O.S.A. RGMTS.
- 2.19 EXISTING SHARED DRIVE
- 2.20 NEW SHADE TREE, RE: LARCH DWGS.
- 2.21 2"x2" 1/8" CORTEN STL FENCE POSTS @ 5'-0" O.C. W/CORTEN 4'-0" H. STL PANELS TRASH BIN ENCLOSURE
- 2.22 HANDICAP AISLE STRIPING TO COMPLY W/ T.A.S.
- 2.23 EXPOSED FORMWORK REINF. CONC. 8"W. X 2'-0" H. WALLS
- 2.24 "DARK SKY" PARKING LOT FIXTURE
- 2.25 UNLEAK WATER FEATURE SET IN EXPOSED FORMWORK WALL
- 2.26 SANDBLASTED REINF. CONC. WALK PAD SET IN PEBBLE PLANTER
- DIVISION 3 CONCRETE
- 3.1 INSULATED STRUCTURAL WALL PANEL W/ EXPOSED FORMWORK
- 3.2 SAWCUT JOINT AS SCHED.
- 3.3 STRUCTURAL REINFORCED CONC. SLAB, RE: STRUC. DWGS.
- DIVISION 4 MASONRY
- 4.1 NOT USED
- DIVISION 5 METALS
- 5.1 STEEL BEAM AS DET. & SCHED.; RE: STRUCT.
- 5.2 STEEL COLUMN AS DET. & SCHED.; RE: STRUCT.
- 5.3 STL. CANOPY SUPPORTS.
- 5.4 ST. STL. HANDRAIL SYSTEM.
- 5.5 STEEL CANOPY FRAME-RE: STRUC.
- 5.6 STL. GREEN WALL SUPPORT FRAME.
- 5.7 ST. STL. CABIES.
- DIVISION 6 WOODS AND PLASTICS
- 6.1 1" WOOD DECK 1/4" W/ CONCEALED FASTENER FLOATING DECK
- DIVISION 7 THERMAL/MOISTURE PROTECTION
- 7.1 45 MIL T.P.O. ROOF SYSTEM OVER PROTECTION BOARD OVER TAPERED ISO INSULATION
- 7.2 CONTINUOUS METAL DRIP BERRIDGE 24 GA. GALVALUME OR EQUAL PREFINISHED BERRIDGE METALLIC COLOR FLAT PANEL SYSTEM.
- 7.3 GALVALUME BERRIDGE HR-16 PANEL NOTE: OUTSIDE CORNERS TO BE WRAPPED PANEL
- 7.4 MTL. CAP FLASHING AS SCHED.-BERRIDGE 24 GA. GALVALUME OR EQUAL
- 7.5 MTL. SCUPPER AS SCHED.- BERRIDGE 24 GA. GALVALUME OR EQUAL
- 7.6 MTL. FLASHING/COUNTERFLASHING- BERRIDGE 24 GA. GALVALUME OR EQUAL
- 7.7 SLOPED CRICKET
- 7.8 ALUM. WRAP TO MATCH WINDOW FINISH- TO INCLUDE COLUMN AND BEAM WRAP.
- 7.9 WALL FLASHING AND COUNTERFLASHING-BERRIDGE 24 GA. GALVALUME OR EQUAL
- 7.10 RIDGE CAP FLASHING- BERRIDGE 24 GA. GALVALUME OR EQUAL
- 7.11 ROOF JACK AS REQUIRED BY ROOF SYSTEM
- 7.12 MTL. FASCIA DRIP FLASHING, 24 GA GALVALUME
- 7.13 ROOF PAD WALKWAY SYSTEM-EXTEND AROUND ALL ROOFTOP EQUIPMENT.
- 7.14 "GREEN" ROOF TRAY SYSTEM-FIRESTONE SKYSCAPE VEGETATIVE ROOF SYSTEM OR EQUAL W/ DRIP IRRIGATION SYSTEM
- DIVISION 8 DOOR AND WINDOWS
- 8.1 INSULATED ALUM. STOREFRONT
- 8.2 KALWALL LUMIRA PANEL SYSTEM- REVERSE SHOJI PANEL
- 8.3 KAL WALL PANEL SYSTEM WINDOW INSERT
- 8.4 KALWALL STANDARD PANEL SYSTEM, REVERSE SHOJI PANEL
- 8.5 KALWALL CANOPY PANEL-REVERSE SHOJI PANEL
- 8.6 INSULATED PANEL INSERT INTO STOREFRONT SYSTEM.
- DIVISION 9 FINISHES
- 9.1 NOT USED
- DIVISION 10 SPECIALTIES
- 10.1 BUILDING SIGNAGE BY OWNER
- 10.2 650 GALLON GALVANIZED CISTERN TANK TO STORE AIR CONDITIONER CONDENSATE- WATERTANKSFORLESS.COM OR EQUAL
- DIVISION 11 EQUIPMENT
- 11.1 NOT USED
- DIVISION 12 FURNISHINGS
- 12.1 NOT USED.
- DIVISION 13 SPECIAL CONSTRUCTION
- 13.1 NOT USED
- DIVISION 14 CONVEYING SYSTEMS
- 14.1 3500# (3) LEVEL ELEVATOR
- DIVISION 15 MECHANICAL
- 15.1 PLUMBING FIXTURE AS SCHED.
- 15.2 MECHANICAL EQUIP. AS SCHED.
- DIVISION 16 ELECTRICAL
- 16.1 ELECTRICAL LIGHT FIXTURE AS SCHED.



THESE DRAWINGS ARE INCOMPLETE. NOT TO BE USED FOR PERMIT AND/OR CONSTRUCTION. FOR COORDINATION AND REVIEW ONLY. JOSEPH M. SMITH/IIA TX REG. #13214

12.17.13
CENTERVIEW MARKET PLACE
MEDICAL OFFICE
 NW LOOP 410 @ CALLAGHAN RD. SAN ANTONIO, TX 78228

This drawing and its reproductions are the property of the architect and may not be reproduced, published, or used in any way without the permission of the architect.

DRAWN	STAFF
CHECKED	JMS
DATE	09.13.13
PROJECT NO.	2404
ISSUE DATES	
09.13.13	REVIEW
10.07.13	REVIEW
12.10.13	REVIEW
12.17.13	SD-PRICING

SHEET TITLE:
 secondlevel.FLOOR PLAN

SHEET NO.
A2.1

01 secondlevel.FLOOR PLAN
 SCALE: 1/8" = 1'-0". 8,150 GROSS S.F.