

Suite 1003 - Existing Conditions

380 Second Avenue

Southeast Corner of East 22nd Street

Medical Space for Lease

Move-in Condition 2,432 RSF

Join our prestigious tenant roster including New York University, Hospital for Joint Diseases, New York Eye & Ear Infirmary, School of Visual Arts, NYU Medical





ABS Partners Real Estate, as the exclusive agent is pleased to offer the following opportunity for lease:

Unit	Size	Possession	Rent
Suite 1003:	2,432 rsf	Immediate	Upon Request

- Move-in condition medical space featuring hardwood floors throughout with good natural light offering west views along 2nd Avenue
- Existing buildout includes reception area, (2) consultation rooms, (4) exam rooms with built-in exam tables and cabinetry, wet pantry, and storage room
- Multiple built-in floor-to-ceiling shelved closets

For further information and/or inspection, please contact:

JAMES CASELEY

Partner, Licensed Real Estate Broker

212-400-6075 | jc@absre.com

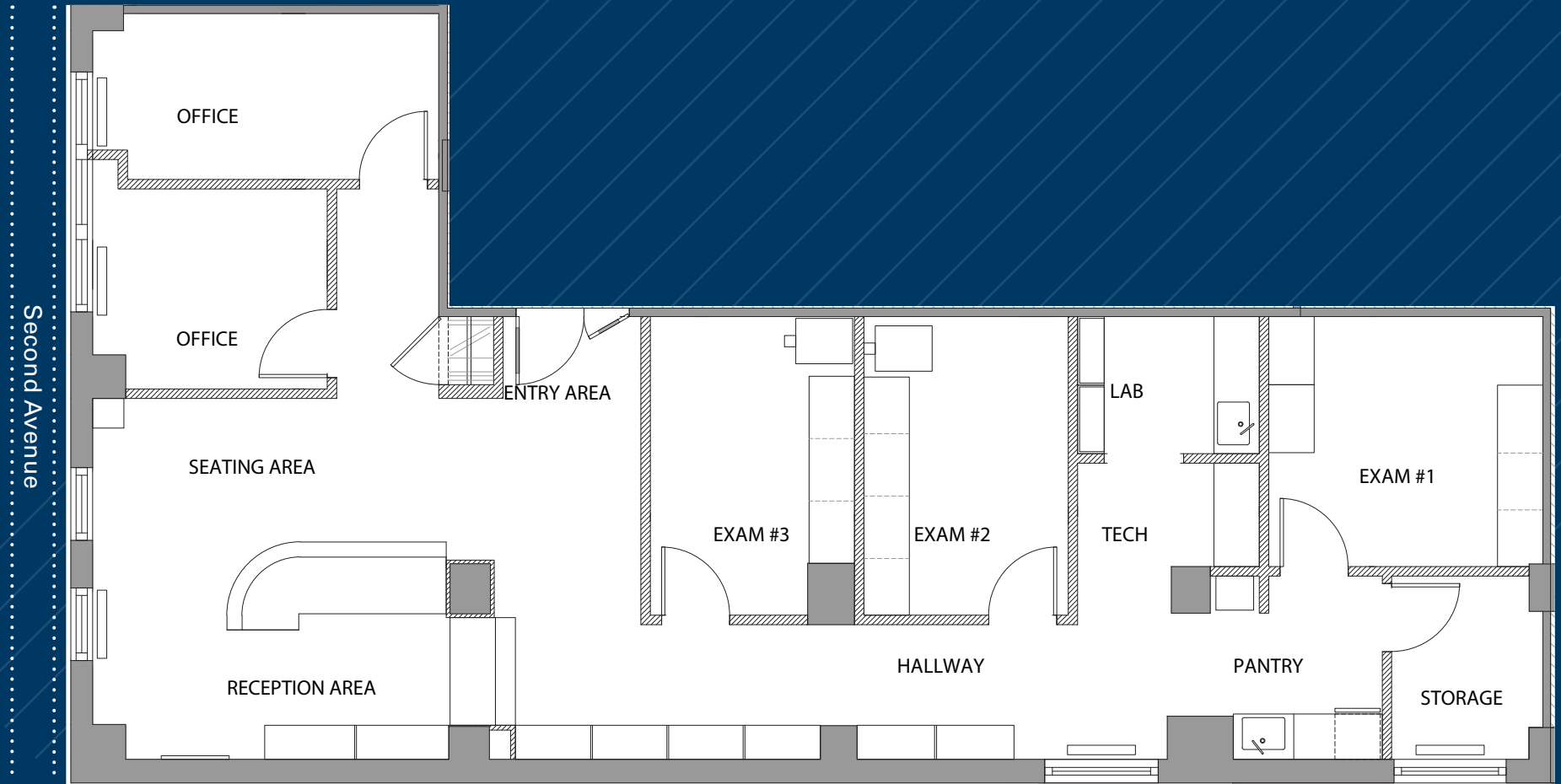


ABS Partners Real Estate • 200 Park Avenue South, 10th Floor, New York, NY 10003 • 212.400.6060 • www.absre.com

All information is from sources deemed reliable but is subject to errors or omissions of any magnitude, withdrawal from market, or changes in terms, all without notice. Brokers employment and payment only by written agreement.

SUITE 1003 FLOOR - 2,432 RSF
(AS-BUILT)

[Click to View Virtual Tour](#)



(for descriptive purposes only; not to scale.)

SUITE 1003 FLOOR - 2,432 RSF
(EXISTING CONDITIONS)



Reception Area



Westerly View



Built-in Floor-to-Ceiling Closets

- | | |
|---|-------------------------------------|
| A | NYU Medical Center |
| B | Alexandria Center for Life Sciences |
| C | Bellevue Hospital |
| D | NYU College of Dentistry |
| E | VA Hospital |
| F | Hospital for Joint Disease |
| G | Beth Israel Medical Center |
| H | New York Eye & Ear |

