



6502 S MCCARRAN BLVD

SUITE D | RENO, NV 89509

OFFICE/MEDICAL FOR LEASE | ±2,946 SF AVAILABLE

CBRE



CENTRALLY LOCATED

in QUAIL CORNERS on McCarran Blvd in the Meadowood submarket. In close proximity to an assortment of retail amenities and nearby Rancharrah, a mixed-use development with residential, retail and office. There is easy access to highways I-580, McCarran Blvd. and Kietzke Lane.

PROPERTY HIGHLIGHTS

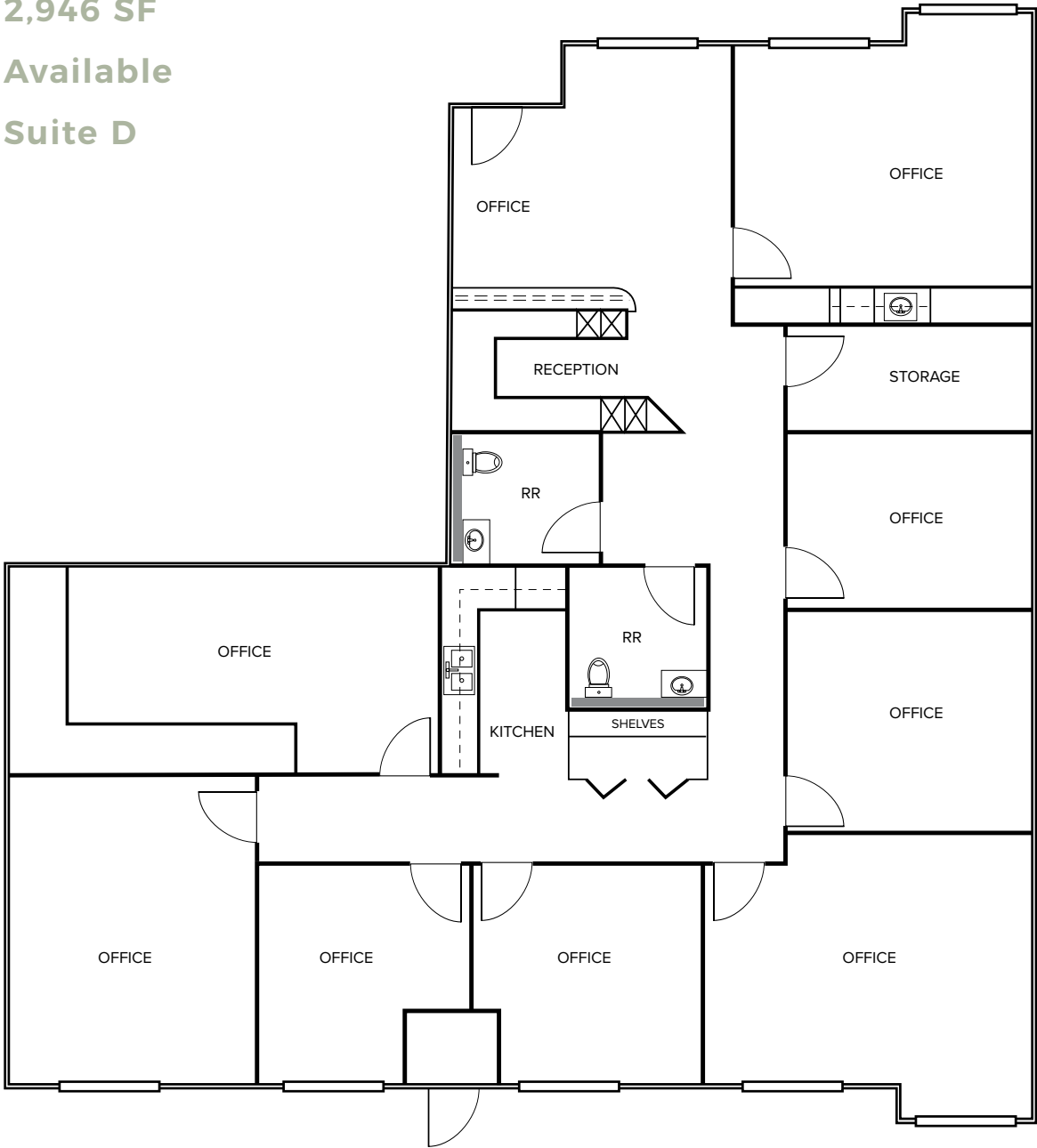
- Medical/Office
- ±2,946 SF Available
- Lease Rate: \$2.10 PSF/ Month, NNN
- Reception
- Private offices
- Bathrooms
- Conference Room
- Break Room
- Highly visible location on main thoroughfare

FLOORPLAN

2,946 SF

Available

Suite D



6502
S MCCARRAN BLVD

NEARBY AMENITIES



Olive Garden

Reno Sparks
Convention Center

Redfield Promenade



Firecreek Crossing

TJ-maxx

Office DEPOT

ROSS
DRESS FOR LESS

Walmart

sam's club



Red Robin

Famous Dave's

Save Mart

Village at Rancharrah

Armando & Sons

Hinoki
Poke

PERENN
BAKERY

ROLLED

DORINDA'S
CHOCOLATES

Nevada
Highway Patrol

7
ELEVEN

Mimi's

jamba

P.F. CHANGS

FIVE GUYS

CHICK-FIL-
A

Chick-fil-A

Del Monte Plaza

macy's

WHOLE
FOODS
MARKET

Cane's

petco

BARNES & NOBLE

BEST
BUY

GREYHOUND

HOME
2

SUITES BY HILTON



Reno-Tahoe
Int'l Airport

CVS
pharmacy

NOTHING BUT
CAKES

TRADER JOE'S

SUBWAY

PLUMAS
BANK

WELLS
FARGO

usbank

Meadowood Mall

The
Cheesecake Factory

EVERY SEASON STARTS AT

DICK'S
SPORTING GOODS

BOWLING & AMUSEMENT
ROUND1

macy's JCPenney

Crummer Lane Plaza

KFC

DEL TACO

Carl's Jr. T-Mobile



DUTCH BROS COFFEE

Total Wine
& MORE



PETSMART

DSW

IN-N-OUT
BURGER

DMV



SITE AERIAL VIEWS

This property is surrounded by executive housing, office, medical office and retail properties.



6502 S MCCARRAN BLVD

SUITE D | RENO, NV 89509



CONTACTS

David Woods, CCIM

Senior Vice President

+1 775 321 4459

david.woods@cbre.com

Lic. S.0072655

Matt Grimes, CCIM

Senior Vice President

+1 775 356 6290

matt.grimes@cbre.com

Lic. S.0072644

Leahna Chapman

Senior Associate

+1 775 650 533 2922

leahna.chapman@cbre.com

Lic. S.0183267

CBRE

© 2026 CBRE, Inc. All rights reserved. This information has been obtained from sources believed reliable, but has not been verified for accuracy or completeness. You should conduct a careful, independent investigation of the property and verify all information. Any reliance on this information is solely at your own risk. CBRE and the CBRE logo are service marks of CBRE, Inc. All other marks displayed on this document are the property of their respective owners, and the use of such logos does not imply any affiliation with or endorsement of CBRE. Photos herein are the property of their respective owners. Use of these images without the express written consent of the owner is prohibited. PMStudio_January 2026