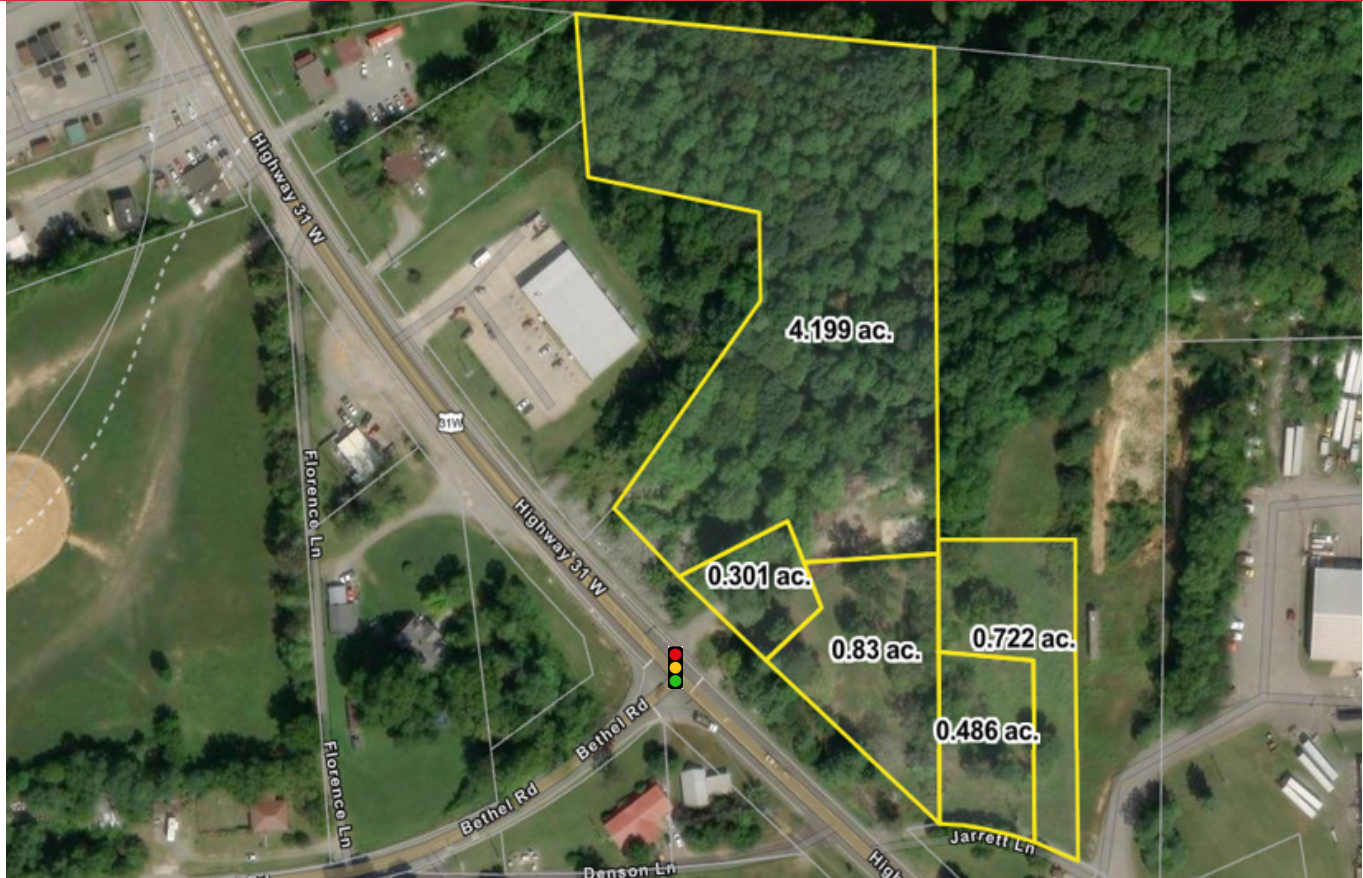


# FOR SALE

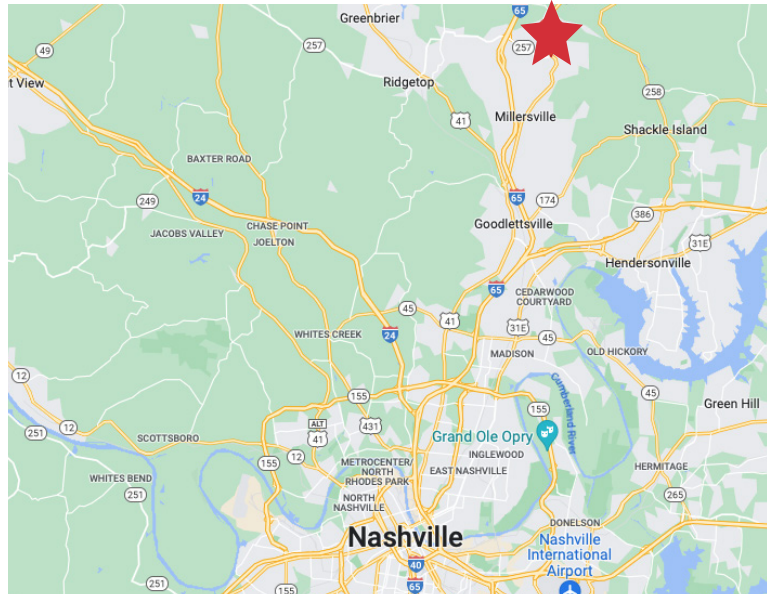
1500 Louisville Hwy  
Goodlettsville, TN 37072

**NAI** Nashville  
Stanton Group



## PROPERTY HIGHLIGHTS

- $\pm 6.5$  acres site in 5 parcels
- Divisible but undivided asking price is \$1,300,000
- Site is reasonably flat with little, if any, flooding or drainage concerns
- Site located at the signaled intersection of Louisville Hwy (US 31) and Bethel Road (SR 257) less than 2-miles to I-65 interchange at Bethel Road
- Traffic count on Bethel Road near Louisville Hwy is 3,622



Contact Broker for additional details:

✓ **Scott Andrews, CCIM**

sandrews@nainashville.com

o 615.377.4747

d 615.622.9073

7105 Town Center Way, 3rd Fl

Brentwood, TN 37027

+1 615 377 4747

nainashville.com

NO WARRANTY OR REPRESENTATION, EXPRESS OR IMPLIED, IS MADE AS TO THE ACCURACY OF THE INFORMATION CONTAINED HEREIN, AND THE SAME IS SUBMITTED SUBJECT TO ERRORS, OMISSIONS, CHANGE OF PRICE, RENTAL OR OTHER CONDITIONS, PRIOR SALE, LEASE OR FINANCING, OR WITHDRAWAL WITHOUT NOTICE, AND OF ANY SPECIAL LISTING CONDITIONS IMPOSED BY OUR PRINCIPALS NO WARRANTIES OR REPRESENTATIONS ARE MADE AS TO THE CONDITION OF THE PROPERTY OR ANY HAZARDS CONTAINED THEREIN ARE ANY TO BE IMPLIED.

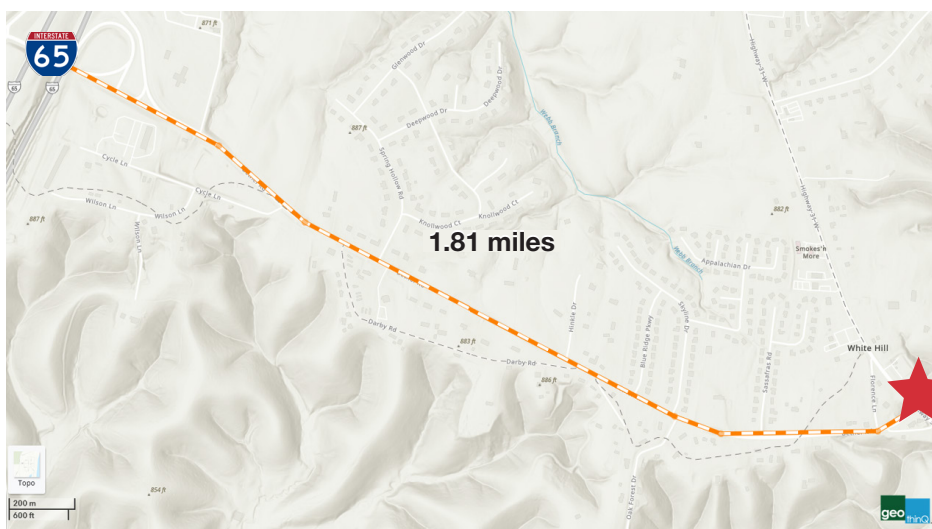


# FOR SALE

1500 Louisville Hwy  
Goodlettsville, TN 37072

## General Site Information

### Topography



### DEMOGRAPHICS

	5-mile
POPULATION	46,087
HOUSEHOLDS	18,753
MEDIAN HH INCOME	\$67,093

**Scott Andrews, CCIM**

sandrews@nainashville.com

o 615.377.4747

d 615.622.9073

Information provided herein is from reliable sources but is not warranted by NAI Nashville or any of its broker(s). Verify all details independently. Terms, conditions, and availability may change without notice.