



# 400 HICKORY DRIVE

ABERDEEN, MARYLAND 21001

FOR  
LEASE



**MACKENZIE**

COMMERCIAL REAL ESTATE SERVICES, LLC

# PROPERTY OVERVIEW

## HIGHLIGHTS:

- Office space located at the entrance to Aberdeen Proving Ground
- Plenty of on-site parking
- Great location for defense contractors

AVAILABLE:

SUITE 301 - 302: 2,042 SF  
SUITE 303: 3,408 SF  
SUITE 402: 1,996 SF  
SUITE 403A: 3,377 SF

PARKING:

5.00 : 1,000 SF

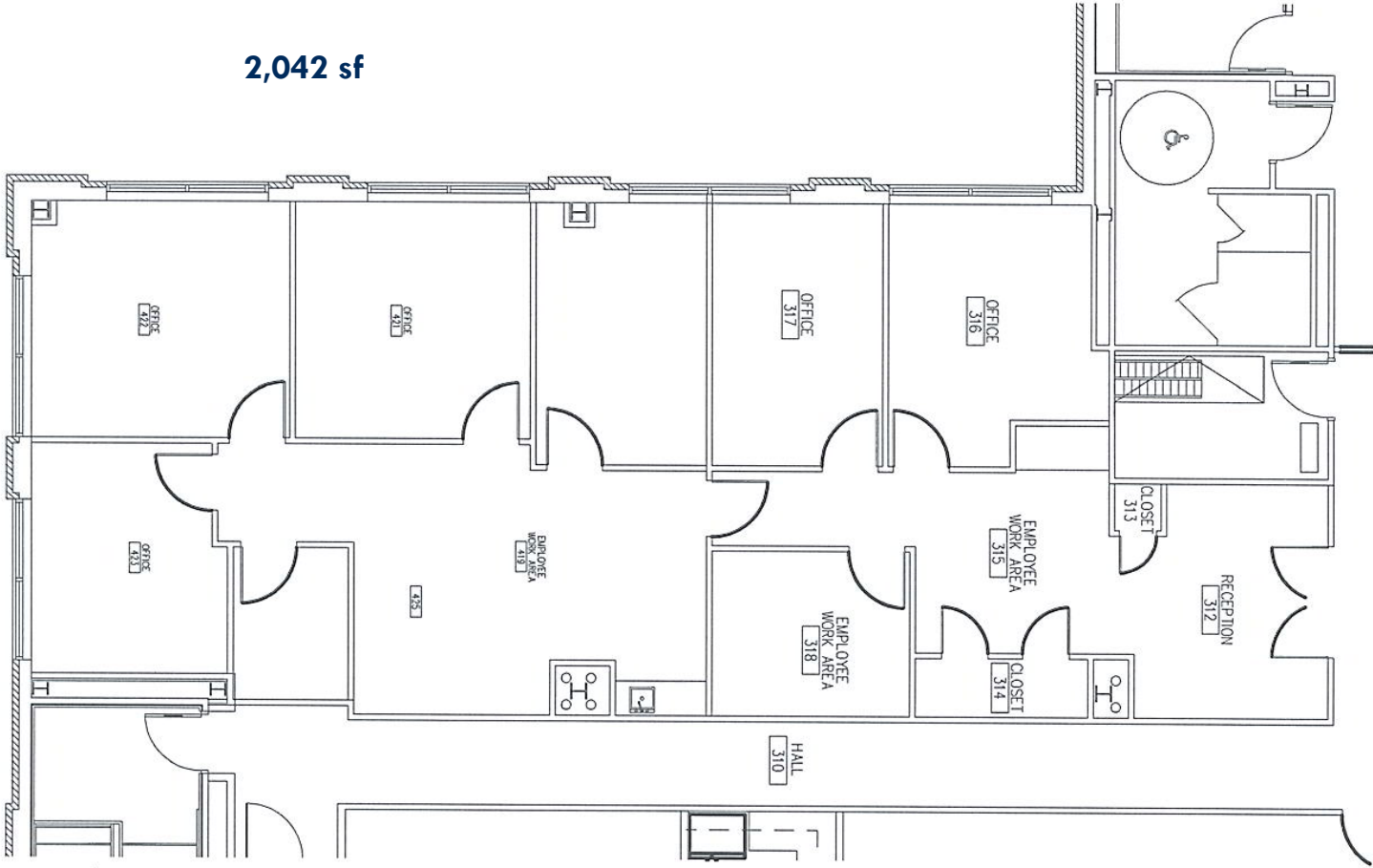
RENTAL RATE:

\$20.00/SF, NNN



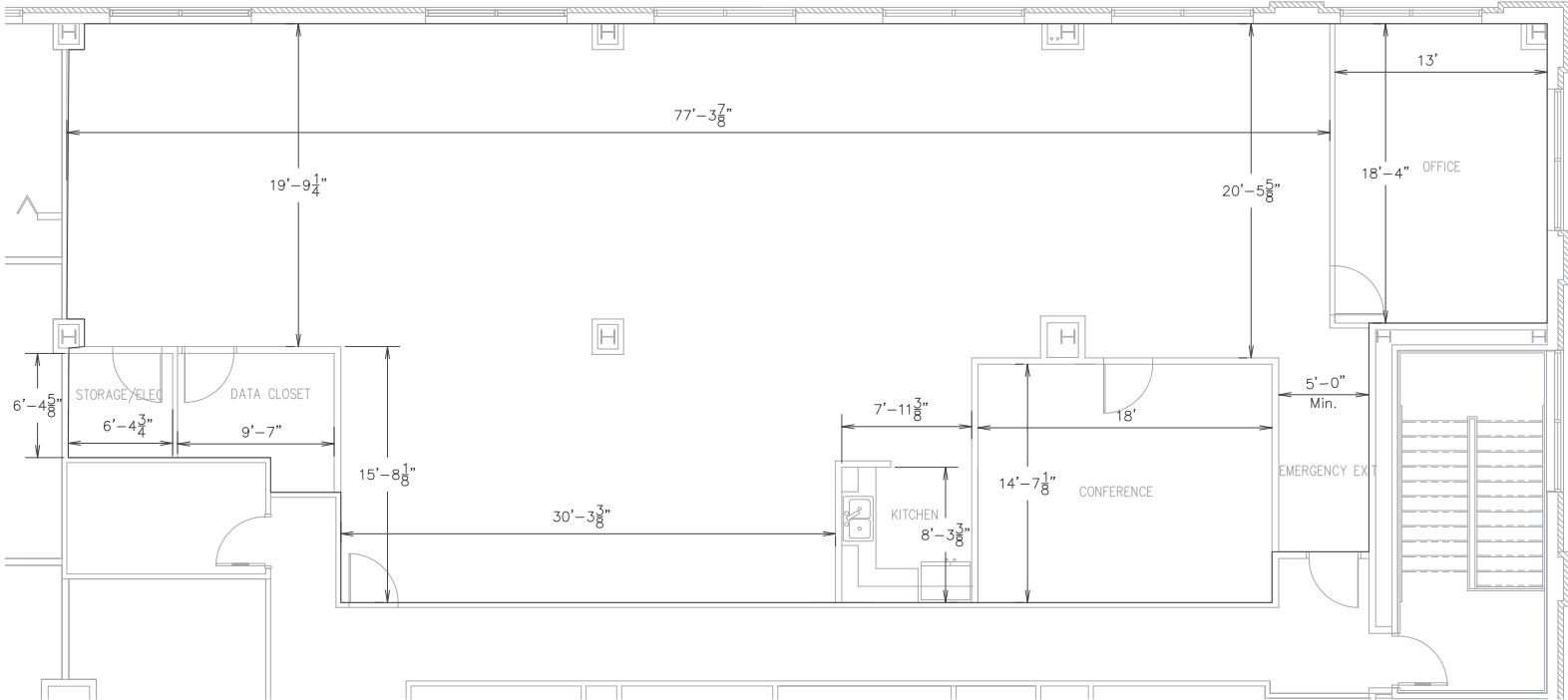
# FLOOR PLAN: SUITE 301-302

2,042 sf

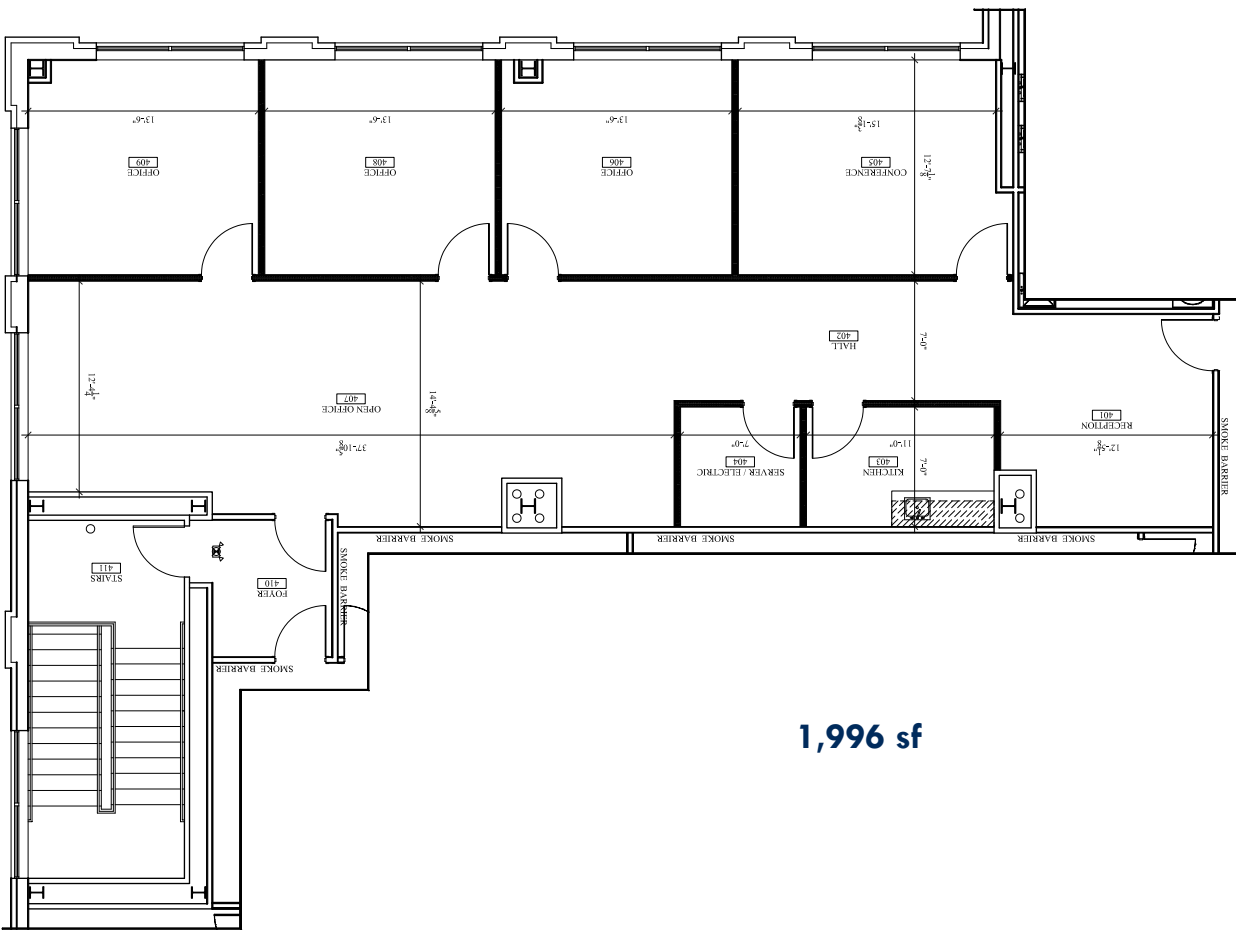


# FLOOR PLAN: SUITE 303

3,408 sf

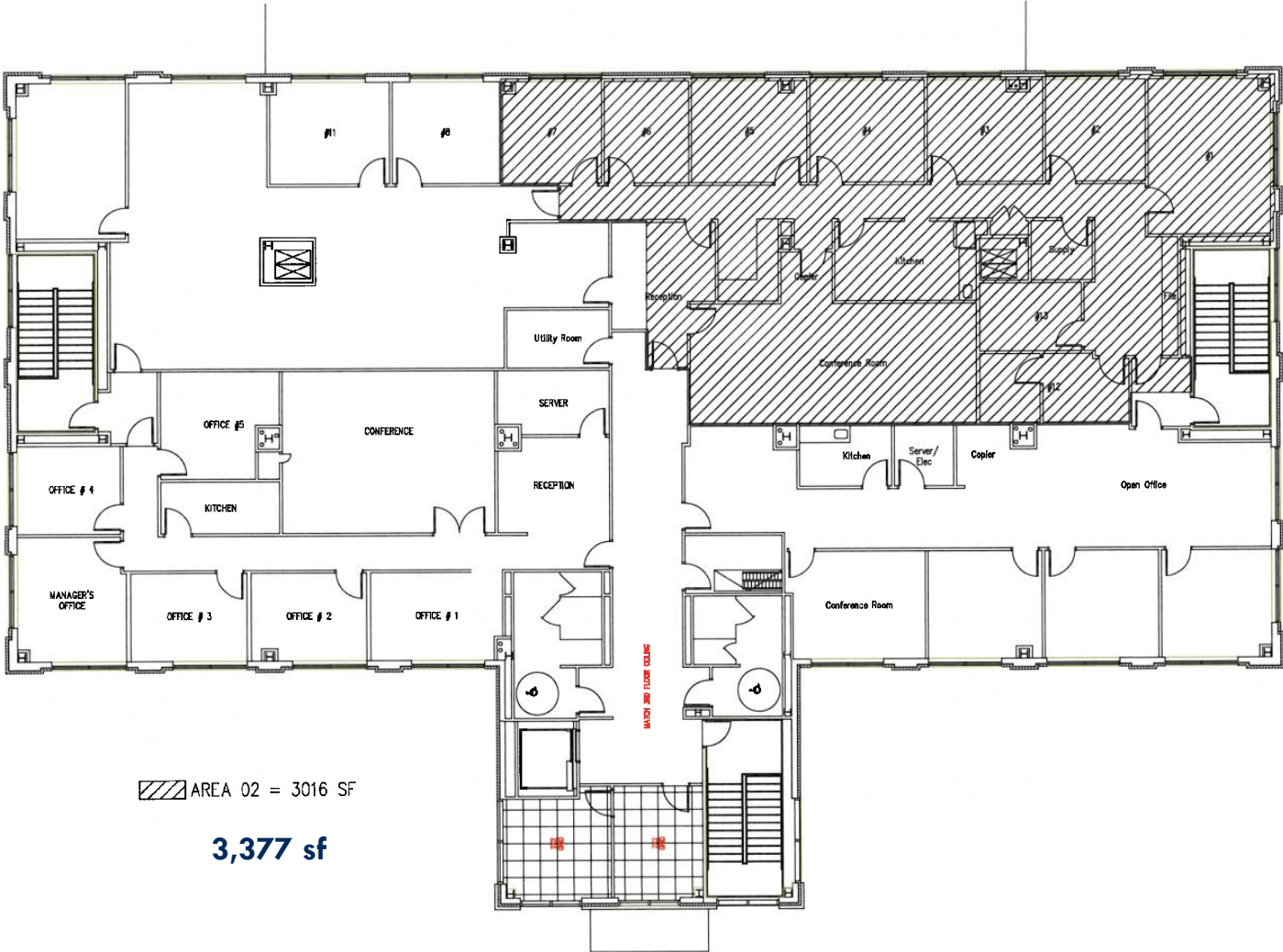


# FLOOR PLAN: SUITE 402

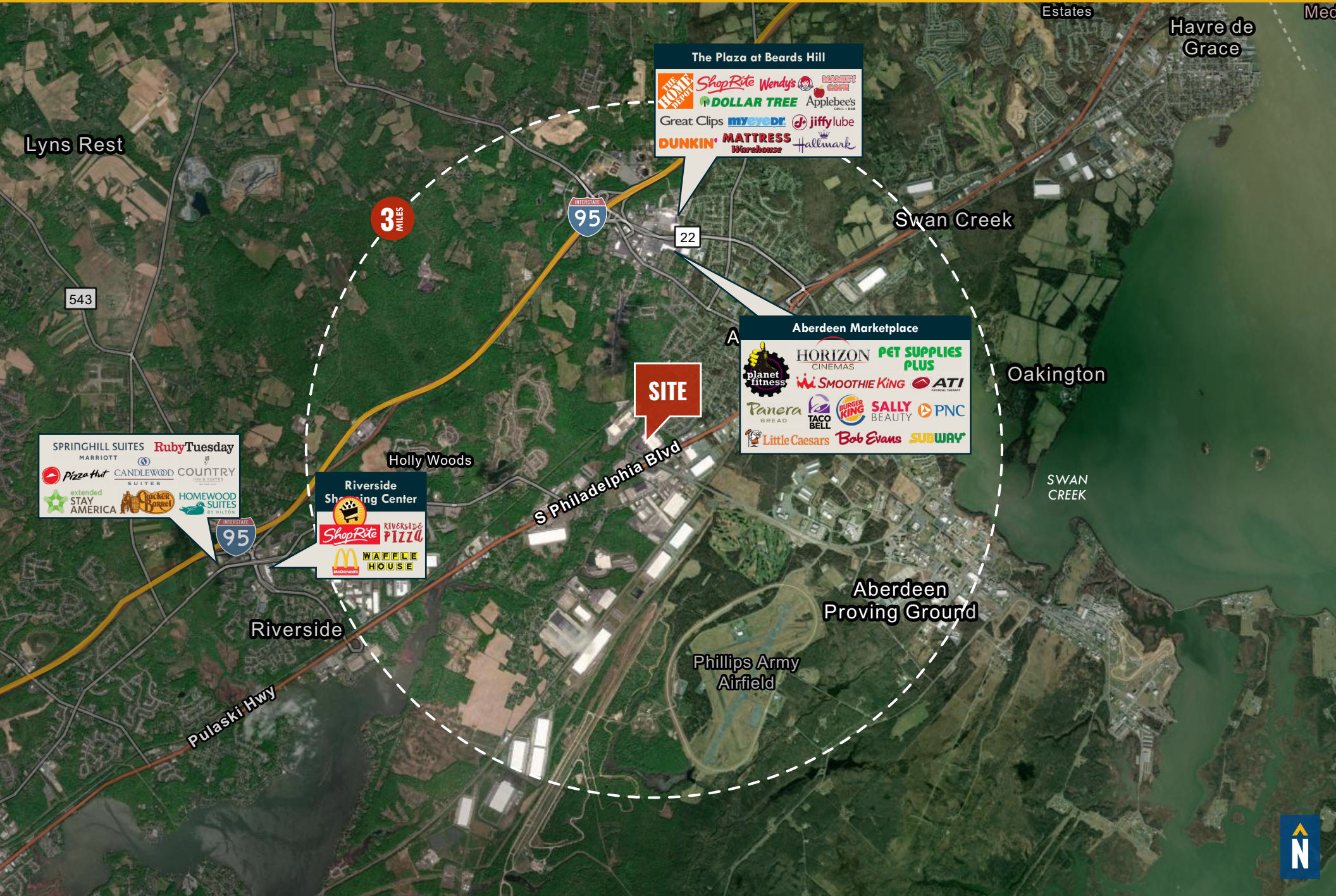


1,996 sf

# FLOOR PLAN: SUITE 403A



# AERIAL



Lyns Rest

3 MILES

95 INTERSTATE

22

Swan Creek

Estates

Havre de Grace

543

SITE

Aberdeen Marketplace

Oakington

SWAN CREEK

SPRINGHILL SUITES MARRIOTT  
Ruby Tuesday  
Pizza Hut  
CANDLEWOOD SUITES  
COUNTRY INN & SUITES  
extended STAY AMERICA  
Rocker Barrel  
HOMEWOOD SUITES BY HILTON

Holly Woods

Riverside Shopping Center  
ShopRite  
RIVERSIDE PIZZA  
McDonald's  
WAFFLE HOUSE

S Philadelphia Blvd

planet fitness  
HORIZON CINEMAS  
PET SUPPLIES PLUS  
SMOOTHIE KING  
ATi  
Panera BREAD  
TACO BELL  
BURGER KING  
SALLY BEAUTY  
PNC  
Little Caesars  
Bob Evans  
SUBWAY

Riverside

Aberdeen Proving Ground

Phillips Army Airfield

Pulaski Hwy



# FOR MORE INFO **CONTACT:**



## **TOM MOTTLEY**

*SENIOR VICE PRESIDENT & PRINCIPAL*

**443.573.3217**

**TMOTTLEY@mackenziecommercial.com**



## **BEETLE SMITH**

*SENIOR VICE PRESIDENT*

**443.573.3219**

**BSMITH@mackenziecommercial.com**



# **MACKENZIE**

COMMERCIAL REAL ESTATE SERVICES, LLC

**410-879-1900**

**3465 Box Hill Corporate Center Drive, Suite F  
Abingdon, MD 21009**

OFFICES IN: ANNAPOLIS, MD BALTIMORE, MD **BEL AIR, MD** COLUMBIA, MD LUTHERVILLE, MD CHARLOTTESVILLE, VA

**[www.MACKENZIECOMMERCIAL.com](http://www.MACKENZIECOMMERCIAL.com)**



VISIT **PROPERTY PAGE** FOR MORE INFORMATION.

*No warranty or representation, expressed or implied, is made as to the accuracy of the information contained herein, and same is submitted subject to errors, omissions, change of price, rental or other conditions, withdrawal without notice, and to any specific listing conditions imposed by our principals.*