



GREENSBORO

GRAHAM

HILLSBOROUGH

DURAHM

RESEARCH  
TRIANGLE PARK

CHAPEL HILL

PITTSBORO

SITE  
27.4 ACRES

0 GREENHILL ROAD

SNOW CAMP, NC 27329

FOR SALE

LISTING BROKER:

MIKE KEEN

SENIOR VICE PRESIDENT

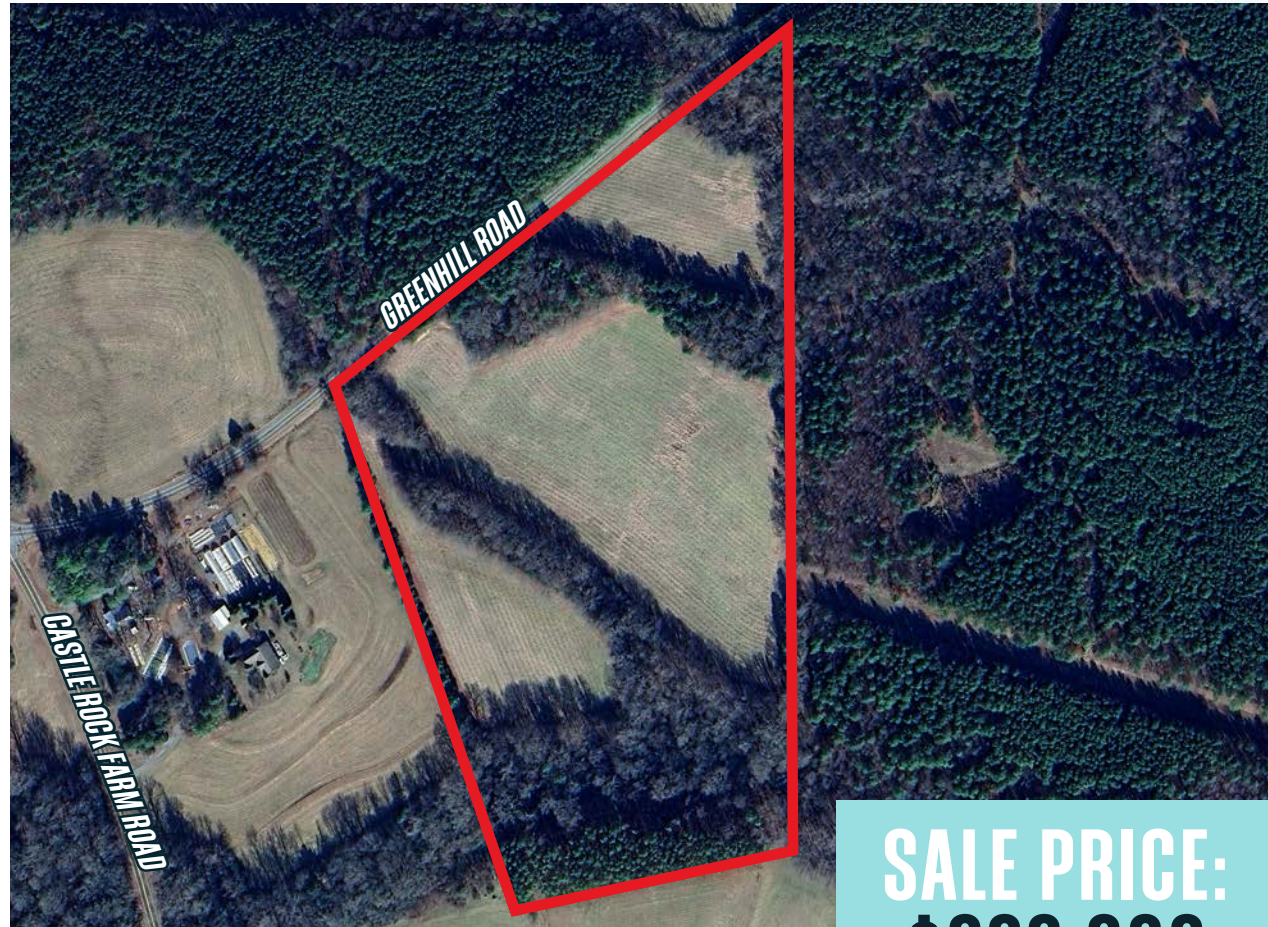
919.573.1392 (O) | 919.795.1944 (M)

MKEEN@TRADEMARKPROPERTIES.COM



## PROPERTY DESCRIPTION

- › Pin #: 9706432228
- › 27.4 acre farm located at the Alamance/Chatham County line.
- › 17 minutes to Pittsboro, 24 minutes to Graham, 32 minutes to Chapel Hill, 37 minutes to Greensboro, and 45 minutes to RTP.
- › Great for private residence and horse farm.
- › Alamance County does not currently have zoning or general commercial development requirements outside of the Watershed Overlay District.
  - › Any division of land within the county is considered a “subdivision” and must meet the requirements of the [Alamance County Unified Development Ordinance](#).
  - › Plans are usually submitted to the Planning Department for an initial review, and then forwarded to the appropriate department for further review and approval.
- › Well and septic system



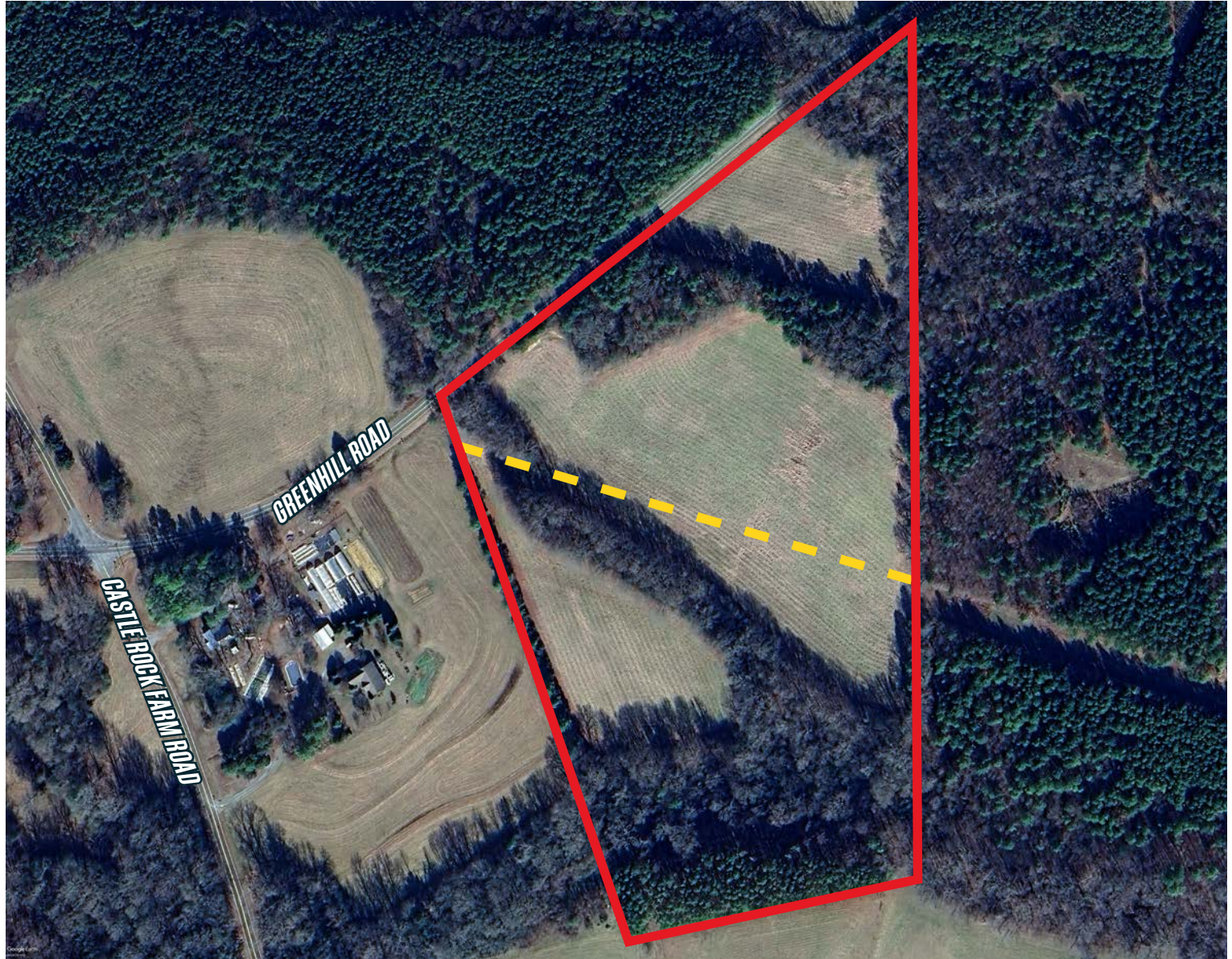
**SALE PRICE:**  
**\$399,000**



0 GREENHILL ROAD  
SNOW CAMP, NC 27329

## AERIAL

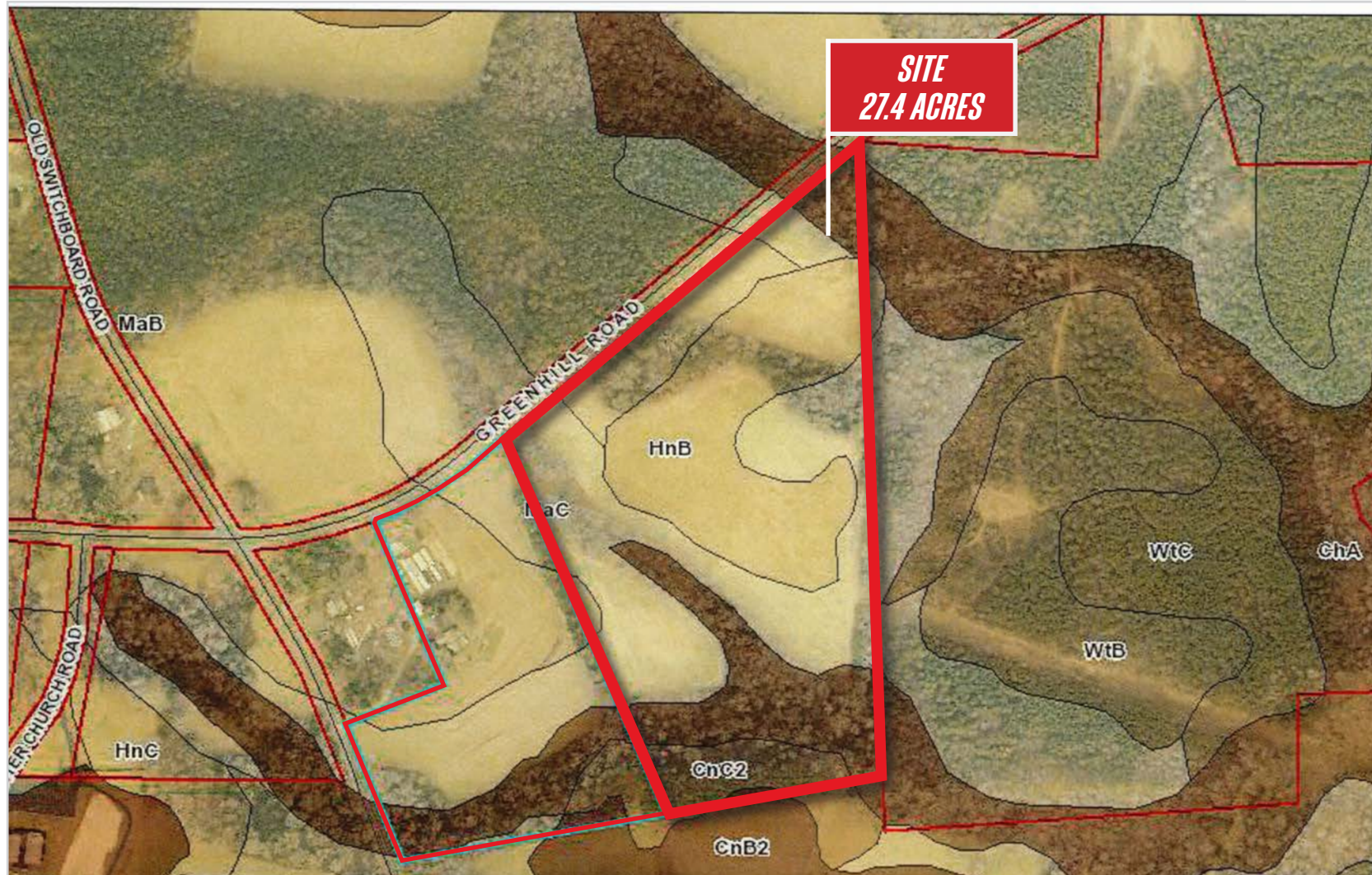
— Gas Easement





0 GREENHILL ROAD  
SNOW CAMP, NC 27329

## SOILS MAP







**MIKE KEEN**  
919.573.1392 (O) | 919.795.1944 (M)  
MKEEN@TRADEMARKPROPERTIES.COM

1001 WADE AVENUE  
SUITE 300, RALEIGH, NC 27605  
TRADEMARKPROPERTIES.COM  
919-782-5552



LISTING BROKER:

MIKE KEEN

919.573.1392 DIRECT | 919.795.1944 MOBILE  
MKEEN@TRADEMARKPROPERTIES.COM



TRADEMARK  
PROPERTIES

THIS IS OUR TRADEMARK

THE INFORMATION CONTAINED HEREIN WAS OBTAINED FROM SOURCES BELIEVED RELIABLE; HOWEVER, TRADEMARK PROPERTIES MAKES NO GUARANTEES, WARRANTIES, OR REPRESENTATIONS AS TO THE COMPLETENESS OR ACCURACY THEREOF. THE PRESENTATION OF THIS PROPERTY IS SUBMITTED SUBJECT TO ERRORS, OMISSIONS, CHANGES OF PRICE OR CONDITIONS PRIOR TO SALE OR LEASE, OR WITHDRAWAL WITHOUT NOTICE.