

2,688 - 8,538 SF AVAILABLE

# 4767 CLARK HOWELL HWY

ATLANTA, GA 30349





## 4767 CLARK HOWELL HIGHWAY, ATLANTA, GEORGIA 30349

This 19,465 sq. ft. building, situated on a 1.01-acre lot, offers efficient operations with 12' x 12' grade-level doors and flexible configurations to meet a variety of needs. Ideally located just over half a mile from I-285 and only 1.6 miles from Hartsfield-Jackson Atlanta International Airport, the property provides exceptional accessibility for logistics and distribution with suites 4 and 6 currently available.

# BUILDING SPECS

BUILDING SIZE 19,465 SF

SUITE 2 2,736 SF

SUITE 4 2,688 SF

SUITE 6 3,114 SF

LOT SIZE 1.01 acres

CLEAR HEIGHT 15'

LOADING Grade level (12'x12')

BUILDING DEPTHS 90' - 100'

LIGHTING Warehouse LED

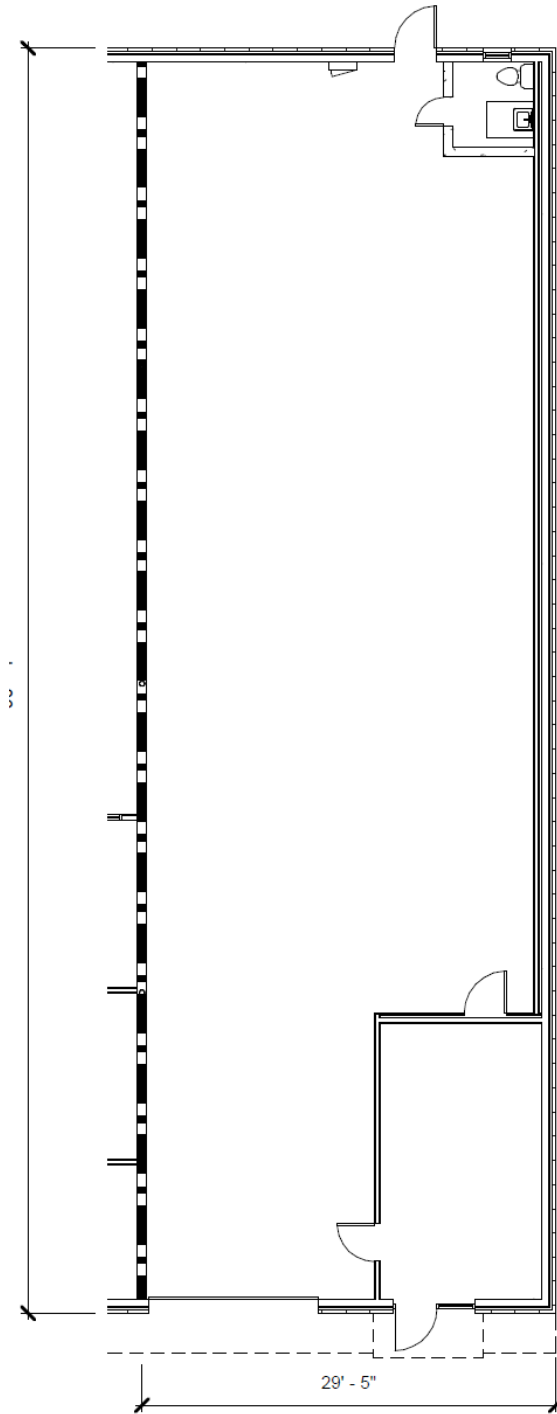
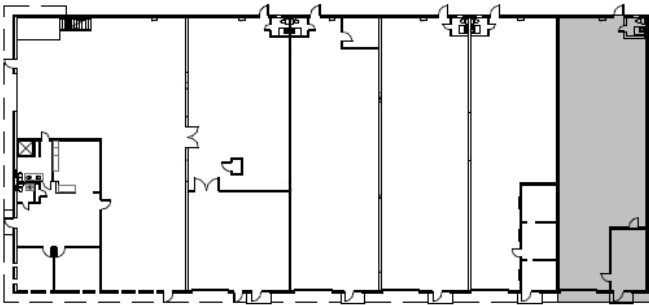
COUNTY Clayton



# SUITE 2 SPECS

AVAILABLE	2,736 SF
OFFICE	303 SF
LOADING	1 grade level door
AVAILABILITY	Within 90 days

## KEY PLAN

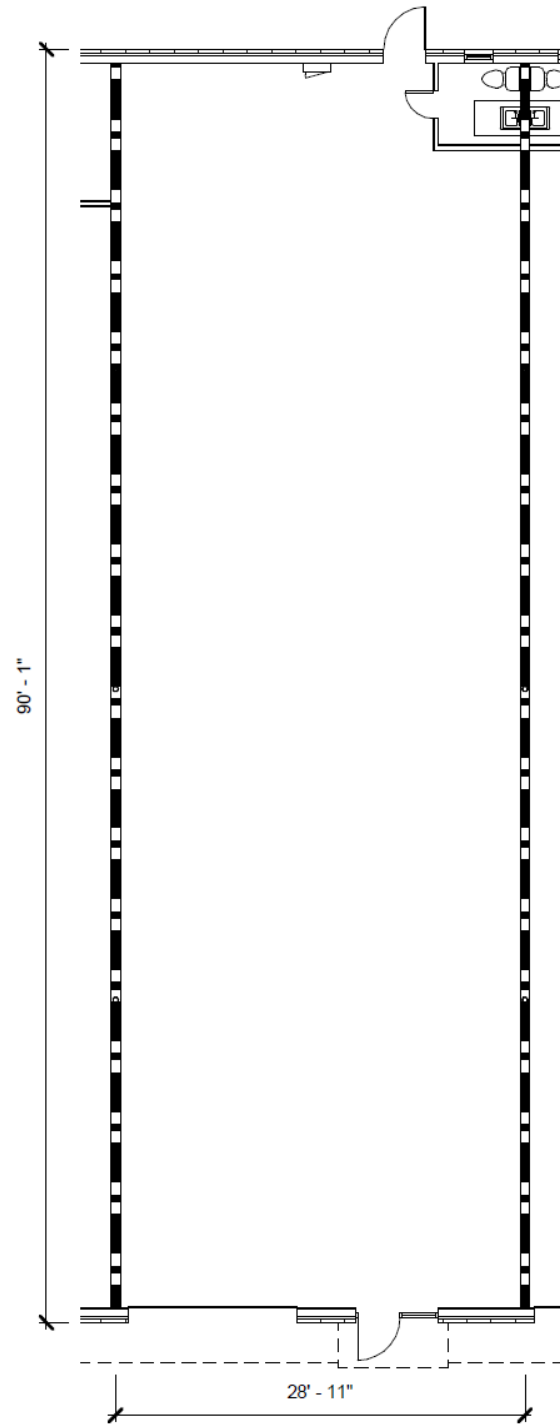
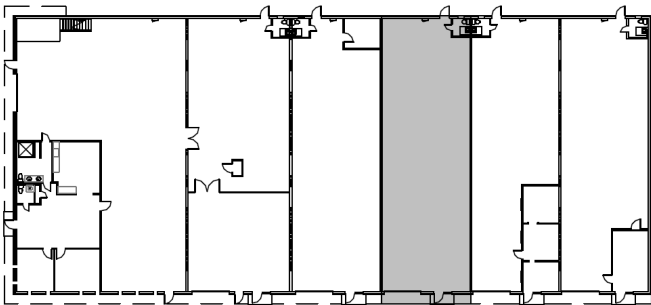


# SUITE 4 SPECS

AVAILABLE 2,688 SF

LOADING 1 grade level door

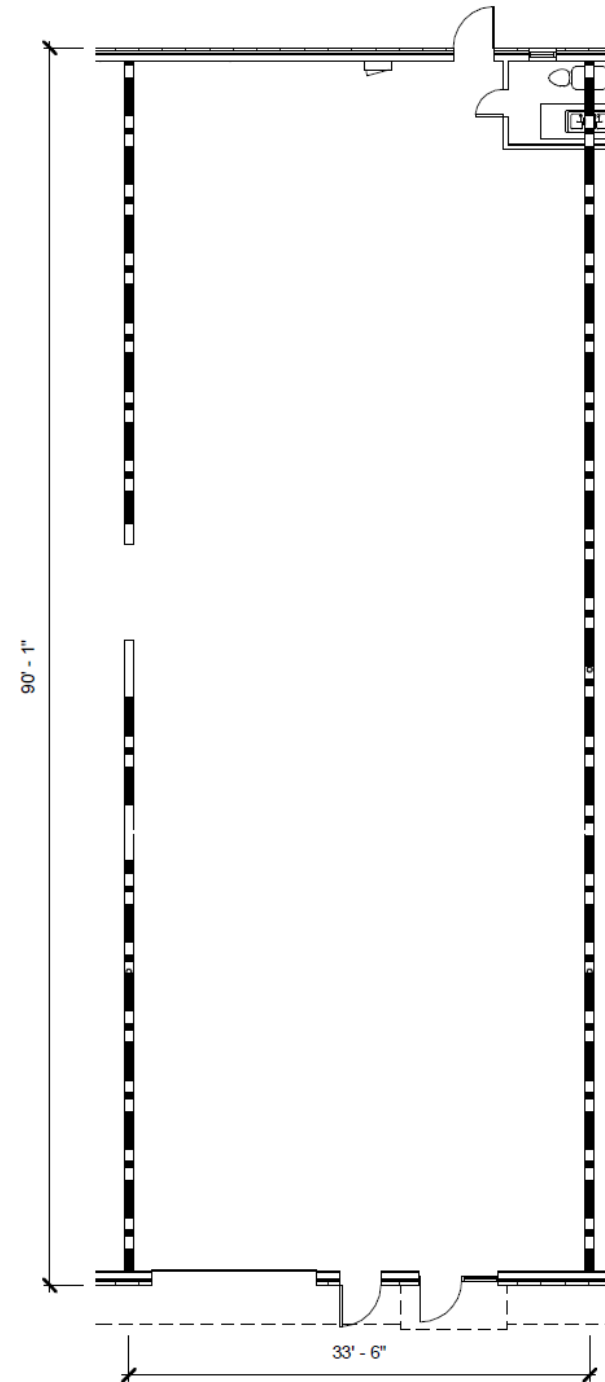
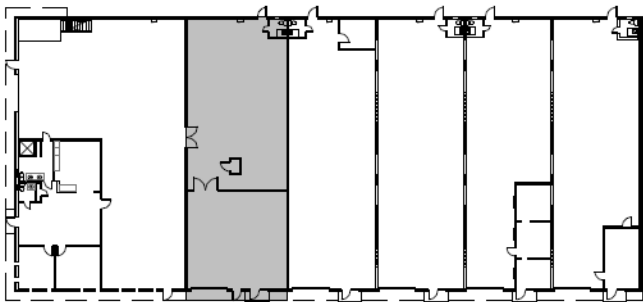
## KEY PLAN

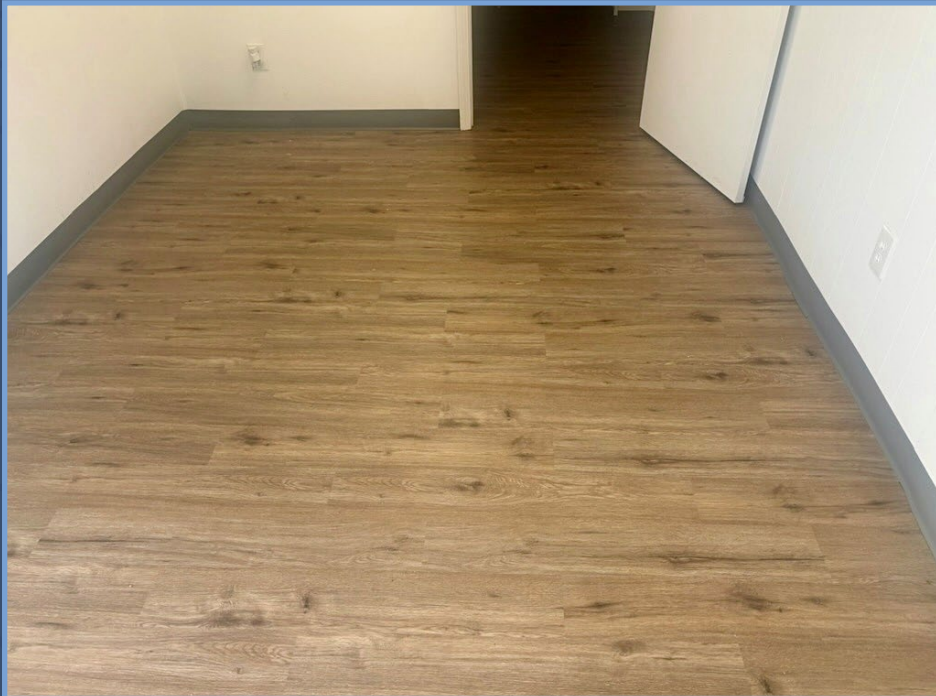


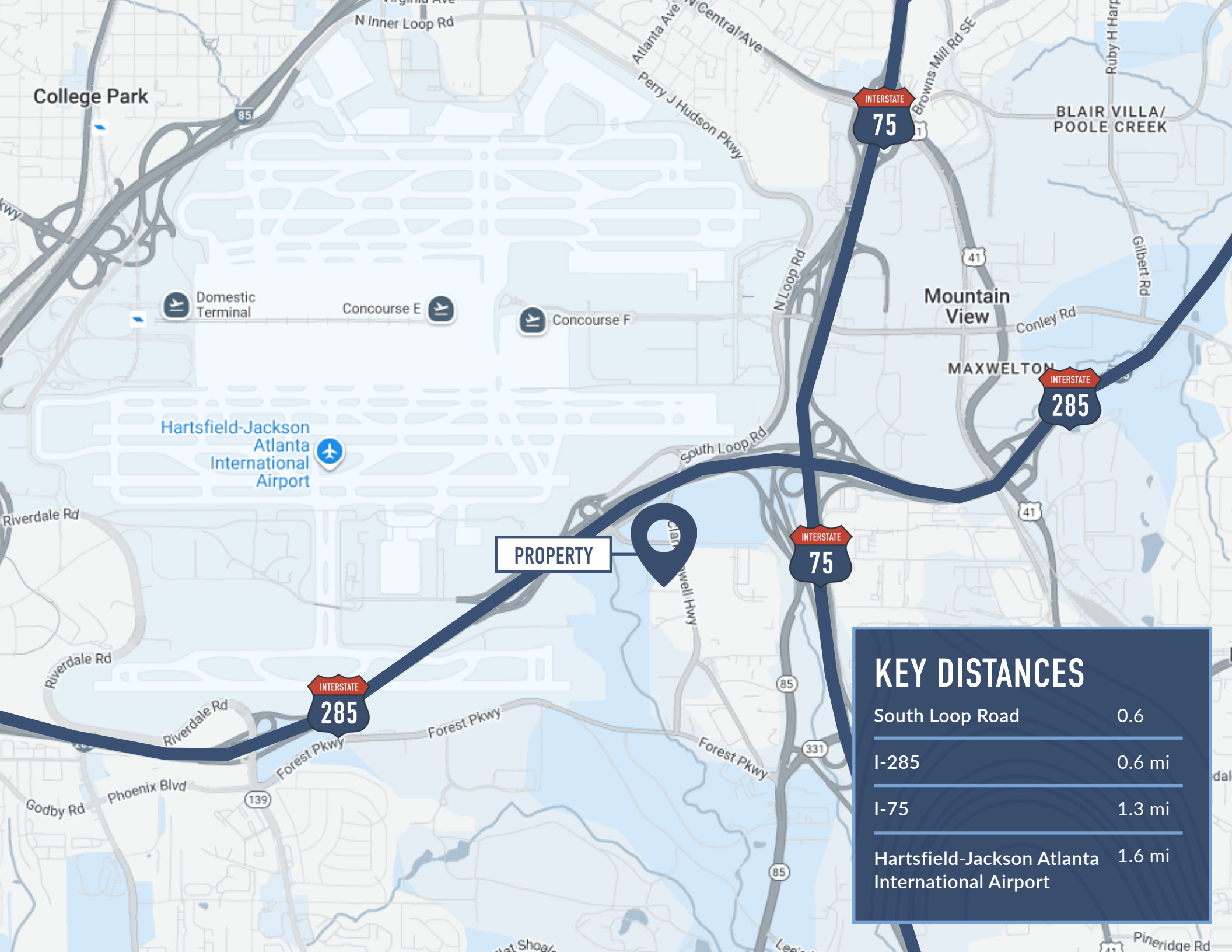
# SUITE 6 SPECS

AVAILABLE	3,114 SF
OFFICE SPACE	1,202 SF
LOADING	1 grade level door

## KEY PLAN







PROPERTY

### KEY DISTANCES

South Loop Road	0.6
I-285	0.6 mi
I-75	1.3 mi
Hartsfield-Jackson Atlanta International Airport	1.6 mi



John Gosnell  
404.563.0608  
jgosnell@strategicrepartners.com  
www.strategicrepartners.com

Joe Taylor  
404.909.9721  
jtaylor@strategicrepartners.com  
www.strategicrepartners.com

