



401 TAYLOR STREET

SAN FRANCISCO | CA
UNION SQUARE

RESTAURANT OPPORTUNITY | 4,174 SF ON GROUND | 876 SF BASEMENT

maven
RETAIL

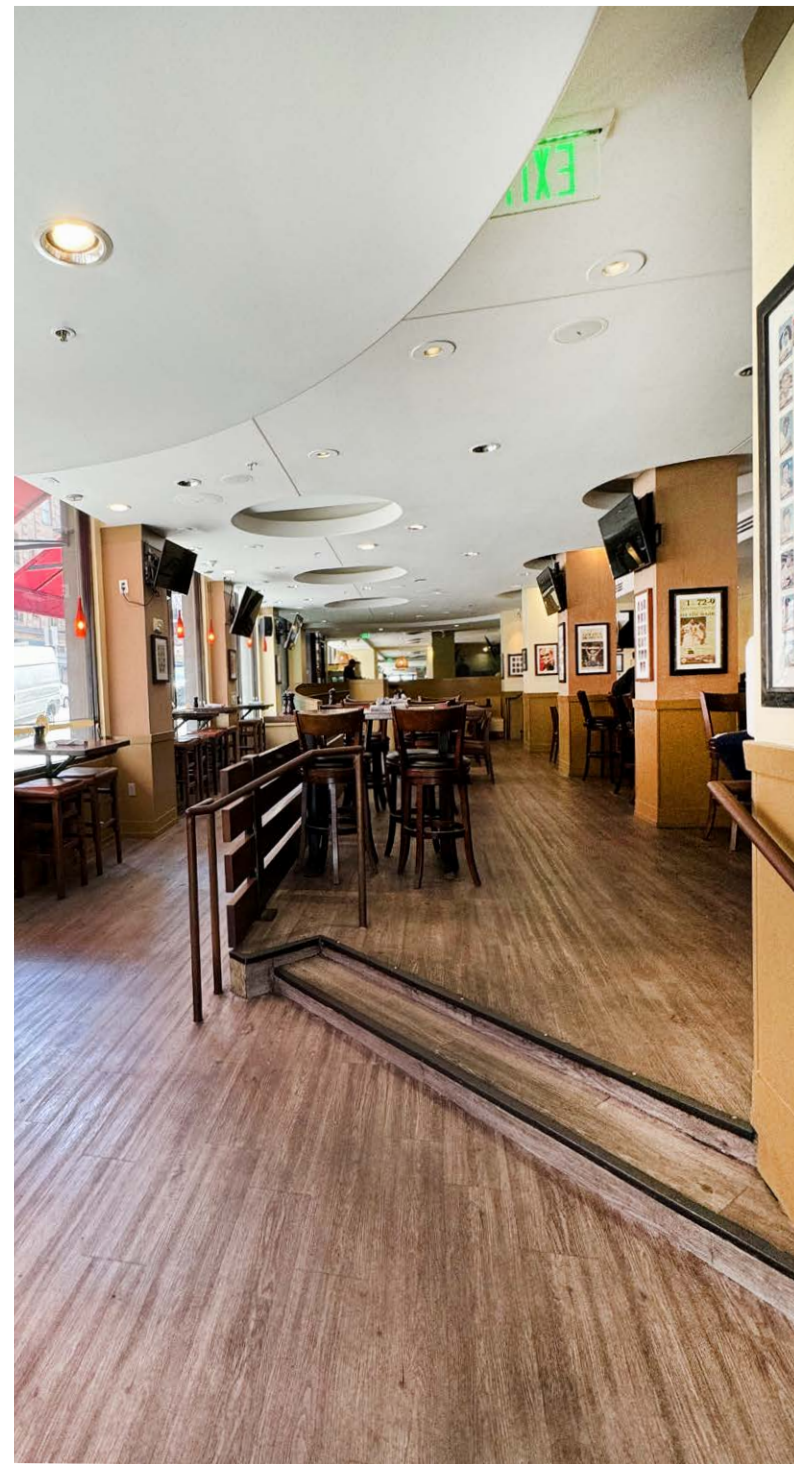


Welcome to 401 Taylor Street, where culinary dreams intersect with a premium location in the heart of San Francisco's vibrant Union Square district. This prime opportunity presents a fully built-out restaurant within the esteemed Hotel Spero, which features 236 luxurious rooms. Situated on the hard corner of O'Farrell and Taylor, this location provides a private entrance to the restaurant, ensuring convenience for patrons. 401 Taylor is surrounded by local favorites like Bodega SF, Hinodeya Ramen, and Kin Khao. Moreover, it's just steps away from Union Square's renowned hotels, including Hilton, Hotel Nikko, Hotel Bijou, JW Marriott, The Marker, The Clift, and The Adagio. Seize this exceptional chance to leave your mark in one of San Francisco's most iconic destinations.

FEATURES

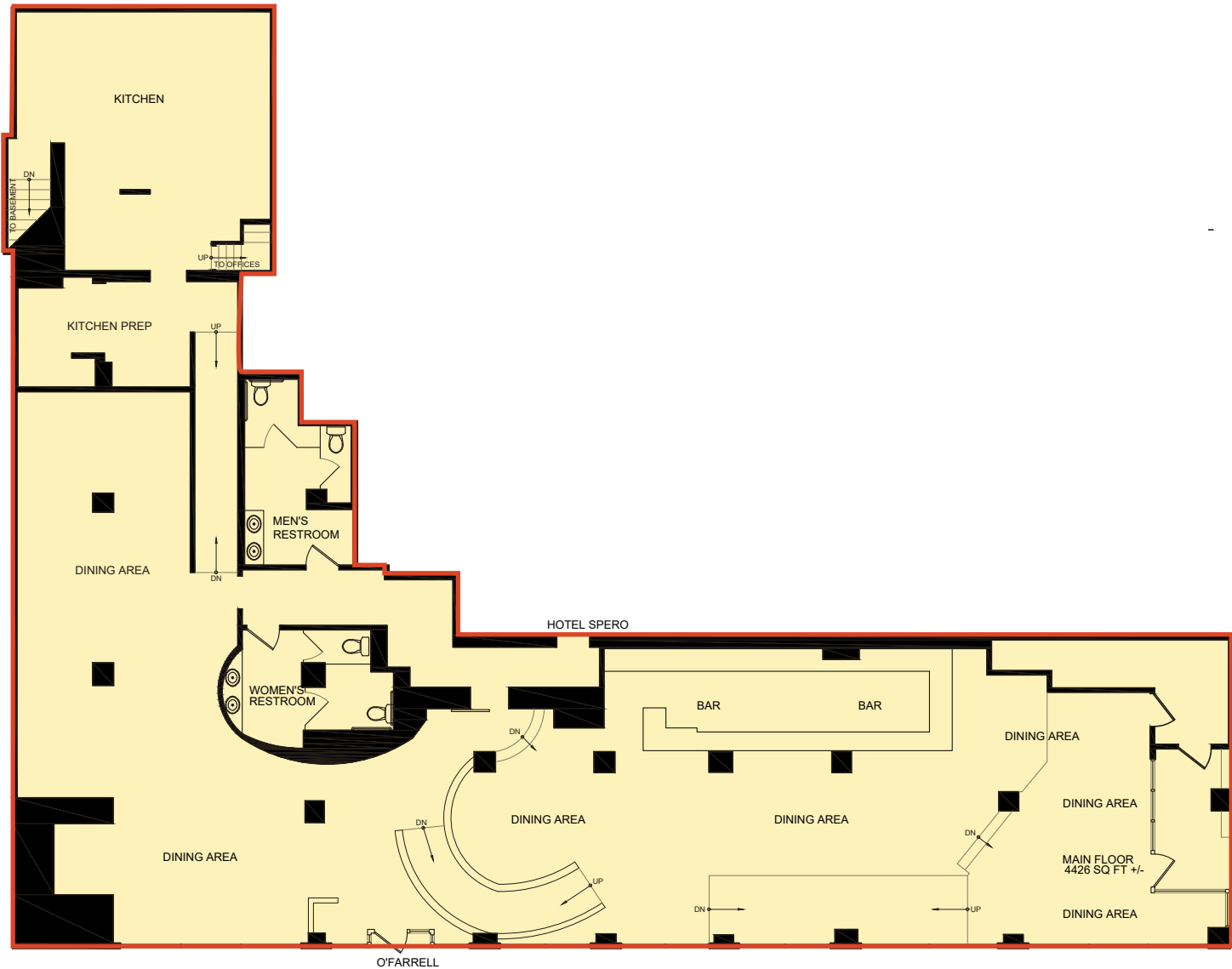
- Fully built-out restaurant space
- Restaurant is part of Hotel Spero (236 rooms)
- Location sits on the hard corner of O'Farrell and Taylor
- Ground floor: 4,426 square feet
- Basement preparation area: 876 square feet
- Type 47 liquor license available
- Private entrance into the restaurant
- Occupancy: 176



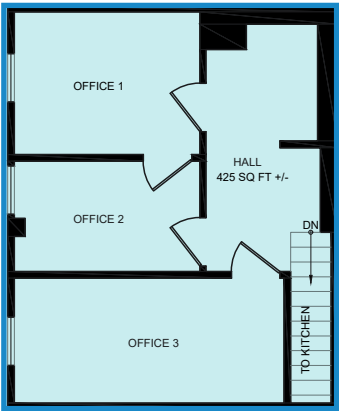


FLOOR PLANS

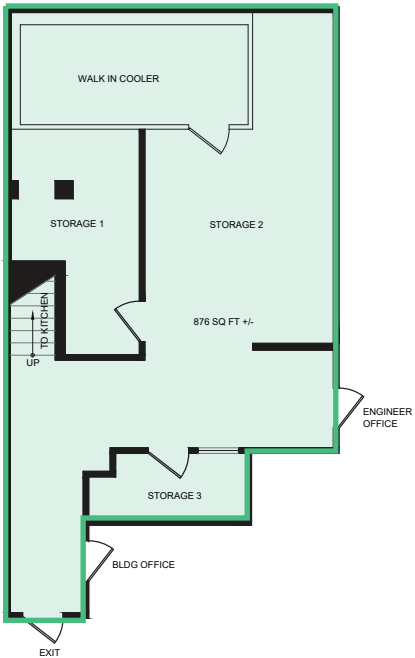
+/- 4,426 SF GROUND FLOOR



425 SF SECOND FLOOR



876 SF BASEMENT



401 TAYLOR STREET | NEIGHBORHOOD





CORZETTI



NEIMAN MARCUS



AMERICAN CONSERVATORY THEATER



HINODEYA RAMEN & BAR



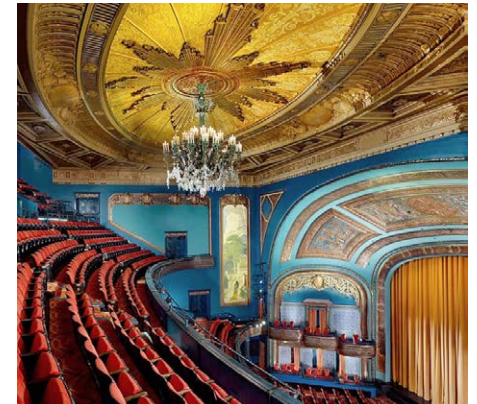
620 JONES



KIN KHAO



BISCUITS & BLUES



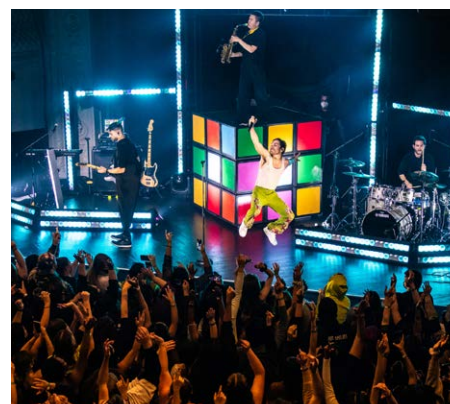
THE CURRAN THEATRE



SONS AND DAUGHTERS



THE MORTIMER



AUGUST HALL



YSL

maven
RETAIL

466 GREEN STREET SUITE #203
SAN FRANCISCO, CA 94133
415-781-7700
WWW.MAVENPROPERTIES.COM

401 TAYLOR ST

SAN FRANCISCO | CA

CATHERINE MEUNIER

office 415.462.7679
catherine@mavenproperties.com
DRE #01843732

PAM MENDELSON

office 415.404.6650
pam@mavenproperties.com
DRE #00953050

GLORIA NORDBAKK

office 415.225.0626
gloria@mavenproperties.com
DRE #02207407

SAGE MIRSKY

office 907.821.1049
sage@mavenproperties.com
DRE #02238781

HALLIE FORMAN

office 415.426.7808
hallie@mavenproperties.com
DRE #02252563



NOTICE: This information has been secured from sources we believe to be reliable but we make no representations, warranties, express or implied, as to the accuracy of the information. Listing broker has been given enough information to provide only a preliminary interest in the property. The materials are not to be considered fact. The information contained herein is not a substitute for thorough due diligence investigation. References to square footage, zoning, use, or age are approximate. Please contact the San Francisco Planning Department to verify zoning at (415) 558-6378, as neither broker or landlord represent that this space is suitable for your use. Tenant or Buyer must verify the information at their own expense and bears all the risk for any inaccuracies. By receiving these materials you are agreeing to the disclaimers set forth herein. DRE#01878802