



169 C STREET | PETALUMA, CA

**FOR LEASE ±2,625 SF**

Office / Retail Space | Prominent Downtown Petaluma Location

JONES LANG LASALLE BROKERAGE, INC. REAL ESTATE LICENSE #: 01856260



# PROPERTY HIGHLIGHTS

169 C Street is located in the heart of Downtown Petaluma's Theatre District, the region's premier downtown location, in the center of it all.



## DESCRIPTION

-  Excellent access to Theatre District's shopping, dining, and fitness amenities
-  High visibility location and excellent branding opportunity
-  Prompt decision-making and uncomplicated negotiations by local, reputable owner
-  Abundant and convenient parking nearby



**169 C Street:** ±2,625 SF

**ADDRESS:** 169 C Street Petaluma, CA

**TYPE:** Office / Retail

**OWNED & MANAGED BY:** Basin Street Properties



Full Kitchen



Built-in Island



Private Office

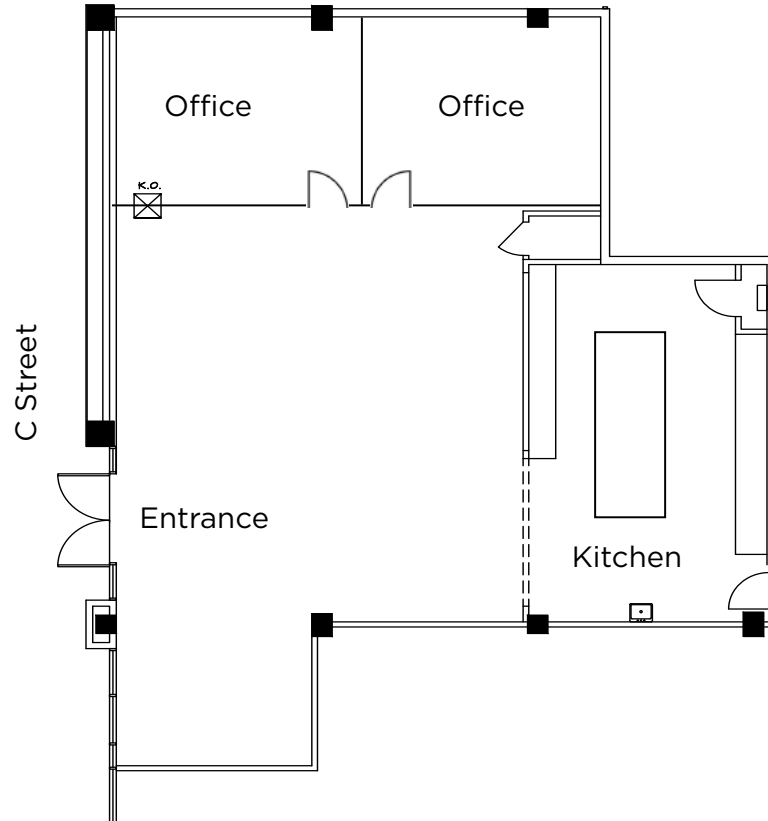


Exposed Ceilings

# ±2,625 SF

- ±2,625 retail / office space
- (2) private offices
- Full kitchen with stove & hood
- Built-in kitchen island
- Open, exposed ceilings
- Shared restrooms

 VIRTUAL TOUR

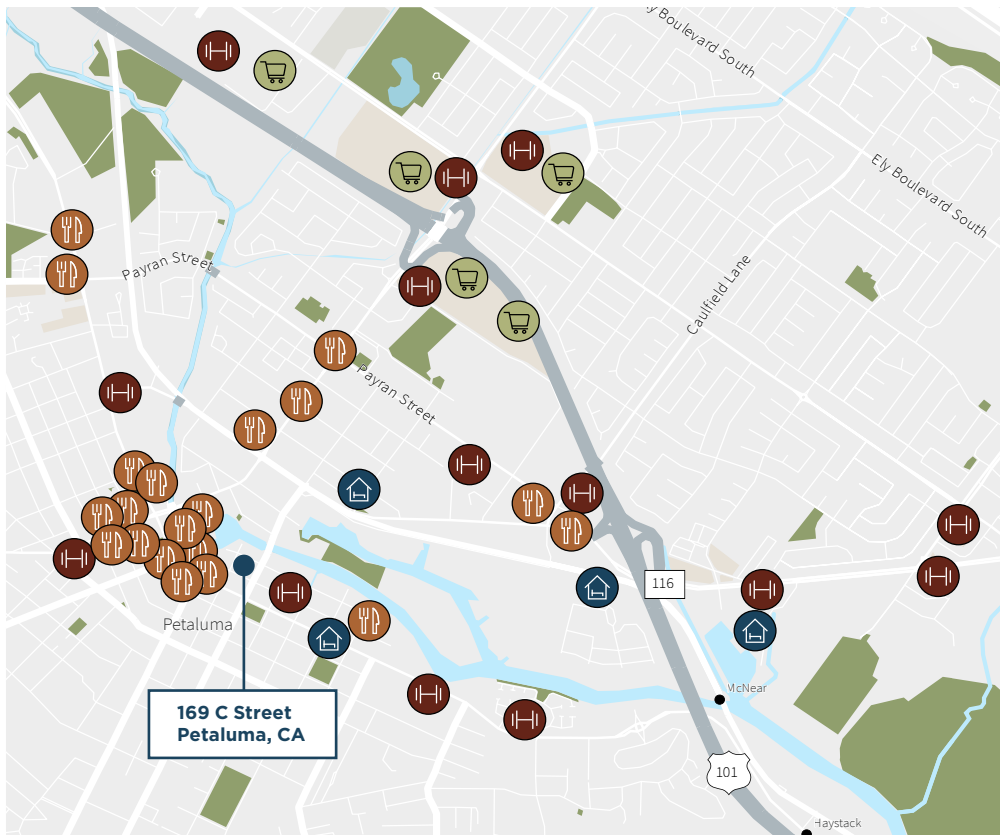


# LOCATION AMENITIES

In the heart of charming Petaluma you will find the Theatre District. The region's premier open-air dining and retail destination venue, featuring local downtown shopping, savory eateries and entertainment.

Situated along the historic and scenic Petaluma River, visitors can shop, dine, and play the day away at this mixed-use lifestyle center.

## Abundant Retail Amenities | Downtown Petaluma



- Restaurants
- Fitness
- Hotels
- Retail

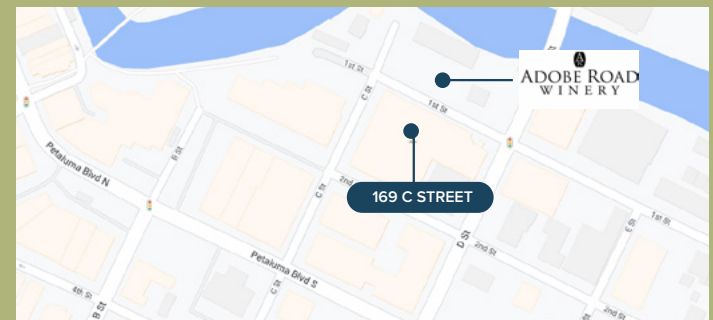
## CONSTRUCTION HAS STARTED

### COMING SOON (2025): ADOBE ROAD WINERY

±16,000 SF Riverfront Winery and Entertainment Complex



### LOCATED DIRECTLY ACROSS FROM 169 C STREET





# FOR LEASE

169 C STREET | PETALUMA, CA

**For more  
information contact:**

**Tony Sarno**

+1 707 217 7196

RE Lic# 01430933

tony.sarno@jll.com

**Laura Duffy**

+1 415 686 0255

RE Lic# 01922792

laura.duffy@jll.com

**Glen Dowling**

+1 415 299 6868

RE Lic# 00890450

glen.dowling@jll.com



**BASIN STREET  
PROPERTIES**

Although information has been obtained from sources deemed reliable, neither Owner nor JLL makes any guarantees, warranties or representations, express or implied, as to the completeness or accuracy as to the information contained herein. Any projections, opinions, assumptions or estimates used are for example only. There may be differences between projected and actual results, and those differences may be material. The Property may be withdrawn without notice. Neither Owner nor JLL accepts any liability for any loss or damage suffered by any party resulting from reliance on this information. If the recipient of this information has signed a confidentiality agreement regarding this matter, this information is subject to the terms of that agreement. ©2024 Jones Lang LaSalle IP, Inc. All rights reserved.