

1400

Brunswick Avenue

Between Nameoke Avenue & B12th Street | Far Rockaway



View from NE Corner of Building



1400 Brunswick Avenue

Between Nameoke Avenue & B12th Street | Far Rockaway

PROPERTY HIGHLIGHTS

- All uses considered
- Situated on .87 Acres
- 3,000 SF Offices with HVAC
- Gas heat
- 100% sprinklered
- 3 Loading Docks / 1 Ramp
- 600 Amp | 3 phase service electrical
- Attractively landscaped
- Excellent parking: 15 spaces

SIZE

Ground Floor 37,200 SF

ASKING RENT

Upon Request

FRONTAGE

487'


POSSESSION

ASAP

CEILING HEIGHT

19'

TRANSPORTATION

 Long Island Rail Road

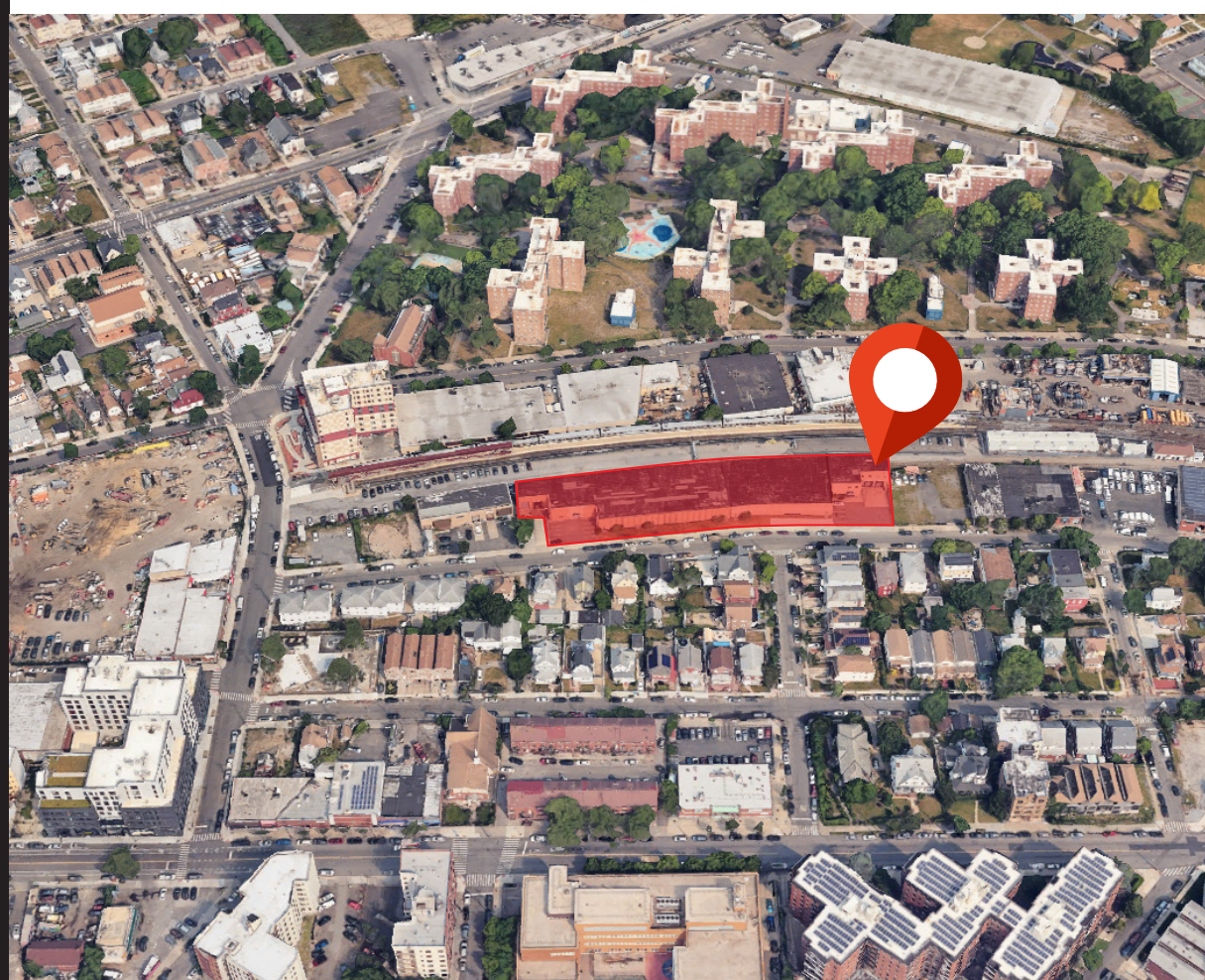
CONTACT OUR BROKERS FOR MORE INFORMATION

BRYNA FLAUM
BFlaum@ksrny.com
516.322.4831

ISAAC SETTON
ISetton@ksrny.com
732.272.4902



View from SW Corner of Building



All information supplied in this marketing presentation and/or flyer is from sources deemed reliable and is furnished subject to errors, omissions, modifications, removal of listings from sale/lease and to any listing condition. Any square footage, dimensions, floor plans and/or technical data set forth are approximations and are subject to further elaboration/confirmation.

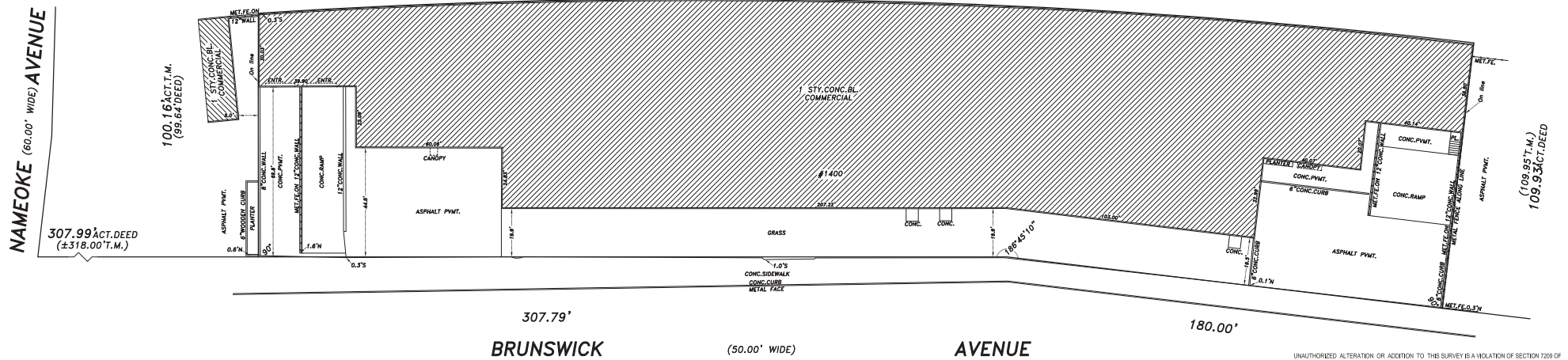


1400

Brunswick Avenue

Between Nameoke Avenue & B12th Street | Far Rockaway

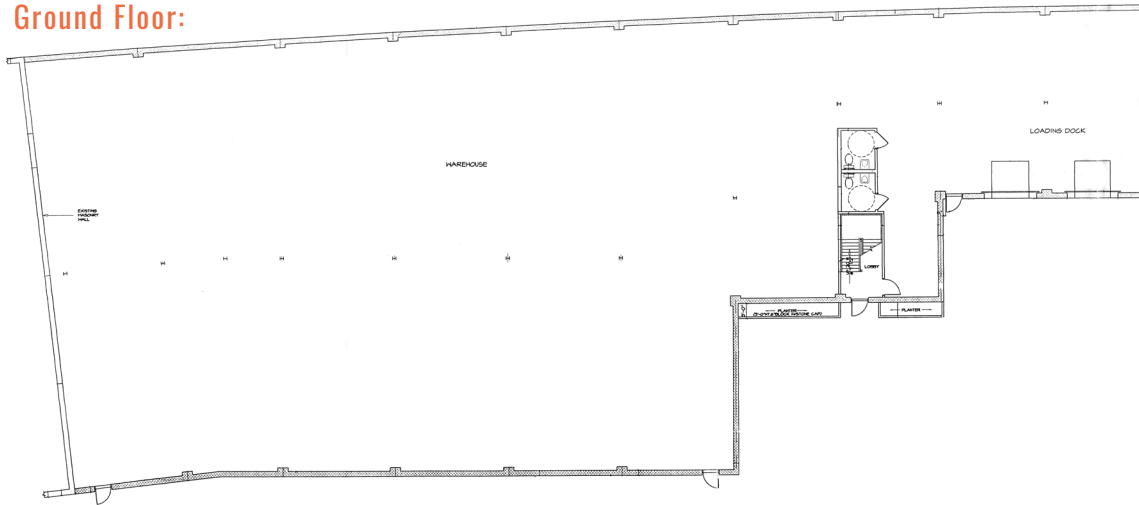
Building Plan:



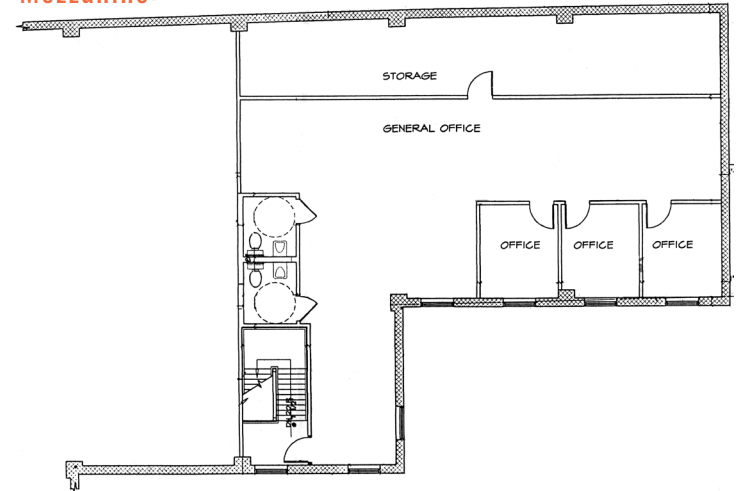
UNAUTHORIZED ALTERATION OR ADDITION TO THIS SURVEY IS A VIOLATION OF SECTION 7209 OF STATE EDUCATION LAW. COPIES OF THIS SURVEY MAP NOT BEARING THE LAND SURVEYORS' IN...

Floor Plans:

Ground Floor:



Mezzanine:



1400

Brunswick Avenue

Between Nameoke Avenue & B12th Street | Far Rockaway

Warehouse Interiors:



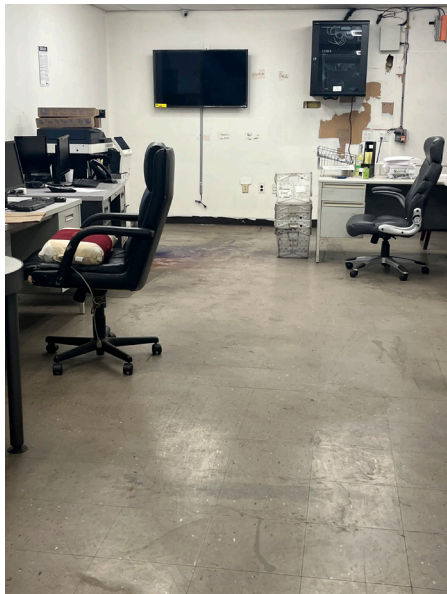
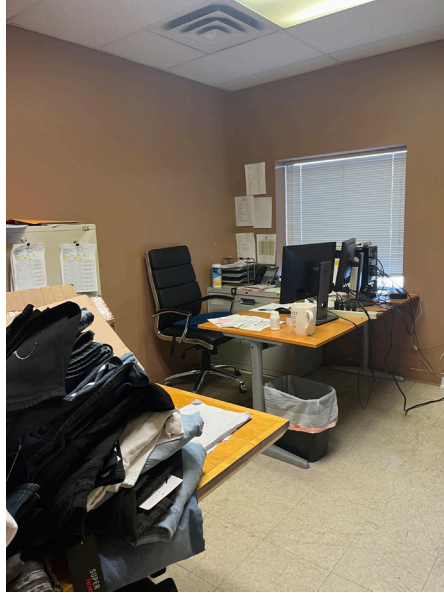
All information supplied in this marketing presentation and/or flyer is from sources deemed reliable and is furnished subject to errors, omissions, modifications, removal of listings from sale/lease and to any listing condition. Any square footage, dimensions, floor plans and/or technical data set forth are approximations and are subject to further elaboration/confirmation.

1400

Brunswick Avenue

Between Nameoke Avenue & B12th Street | Far Rockaway

Office Interiors:



1400

Brunswick Avenue

Between Nameoke Avenue & B12th Street | Far Rockaway

FOR MORE INFORMATION,
PLEASE CONTACT:

BRYNA FLAUM

516.322.4831 | BFlaum@ksrny.com

ISAAC SETTON

732.272.4902 | ISetton@ksrny.com

