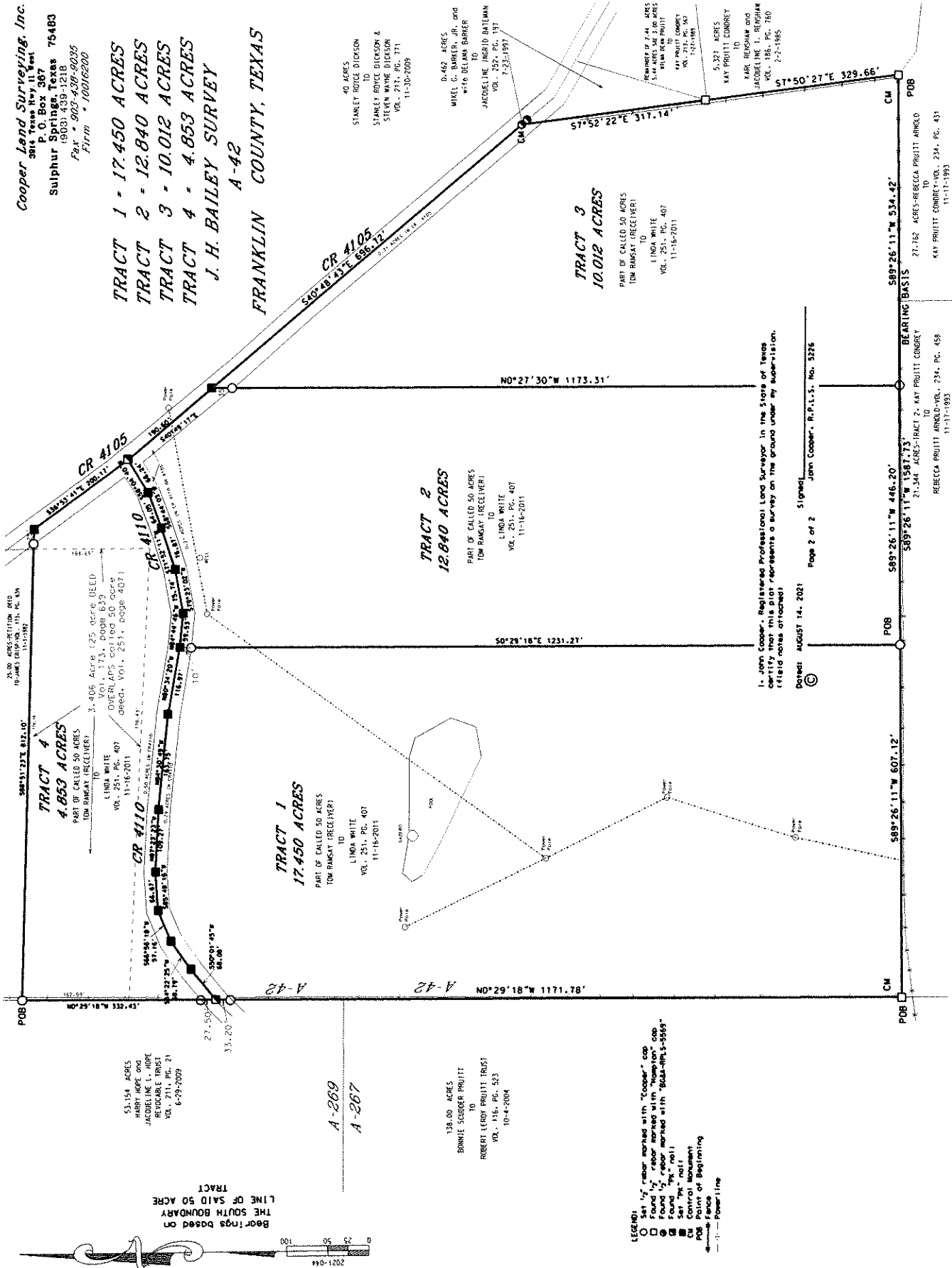


**Cooper Land Surveying, Inc.**  
 3914 Texas Hwy. 11 West  
 P. O. Box 387  
 Sulphur Springs, Texas 76483  
 (903) 439-1218  
 Fax - 903-409-9009  
 Firm # 10016200

TRACT 1 - 17.450 ACRES  
 TRACT 2 - 12.840 ACRES  
 TRACT 3 - 10.012 ACRES  
 TRACT 4 - 4.853 ACRES  
 J. H. BAILEY SURVEY  
 A-42

FRANKLIN COUNTY, TEXAS



40 ACRES  
 STANLEY BOUCE DICUSON  
 TO  
 STANLEY BOUCE DICUSON &  
 STEVEN WAYNE DICUSON  
 VOL. 217, PG. 371  
 11-30-2009

0.462 ACRES  
 WIREL C. BARKER, JR. and  
 wife DELANA BARKER  
 TO  
 JACQUELINE INGRID BATMAN  
 VOL. 257, PG. 797  
 1-23-2009

REWHIRE OF 7.41 ACRES  
 JACQUELINE INGRID BATMAN  
 TO  
 KAY PRUITT CONBRET  
 VOL. 211, PG. 483  
 1-27-1993  
 5.327 ACRES  
 KAY PRUITT CONBRET  
 TO  
 KARE REINHARD AND  
 JACQUELINE T. REINHARD  
 VOL. 195, PG. 780  
 2-7-1985

TRACT 3  
 10.012 ACRES  
 PART OF CALLED 50 ACRES  
 TO  
 LINDA WHITE  
 VOL. 251, PG. 407  
 11-18-2011

TRACT 2  
 12.840 ACRES  
 PART OF CALLED 60 ACRES  
 TO  
 TOM RAMSAY (RECEIVER)  
 LINDA WHITE  
 VOL. 251, PG. 407  
 11-18-2011

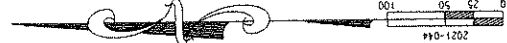
TRACT 1  
 17.450 ACRES  
 PART OF CALLED 50 ACRES  
 TO  
 TOM RAMSAY (RECEIVER)  
 LINDA WHITE  
 VOL. 251, PG. 407  
 11-18-2011

TRACT 4  
 4.853 ACRES  
 PART OF CALLED 50 ACRES  
 TO  
 TOM RAMSAY (RECEIVER)  
 LINDA WHITE  
 VOL. 251, PG. 407  
 11-18-2011

I, John Cooper, Registered Professional Land Surveyor in the State of Texas  
 certify that this plat represents a survey on the ground under my supervision.  
 (field notes attached)  
 Dated: AUGUST 14, 2021  
 Page 2 of 2  
 John Cooper, R.P.L.S., No. 3276

27.762 ACRES-REBECCA PRUITT ARMED  
 KAY PRUITT CONBRET-VOL. 234, PG. 431  
 11-17-1993

21.344 ACRES-TRACT 2 - KAY PRUITT CONBRET  
 REBECCA PRUITT ARMED-VOL. 234, PG. 438  
 11-17-1993



BEARINGS BASED ON  
 LINE OF SAID 50 ACRE  
 TRACT

- LEGEND:
- Set 1/2" rebar marked with "Cooper" cap
  - Found by "Cooper" marked with "Cooper" cap
  - Found by "Cooper" marked with "Rebecca 1-1993"
  - Found by "Cooper" marked with "Rebecca 1-1993"
  - Set "TK" nail
  - Set "TK" nail
  - Control Monument
  - POB Point of Beginning
  - Power Line