

MEDICAL SPACES FOR LEASE

PRIME BEVERLY HILLS



240 S LA CIENEGA BLVD
BEVERLY HILLS, CA 90211



COMMERCIAL
ASSET GROUP

NEWMARK



These materials are based on information and content provided by others, which we believe are accurate. No guarantee, warranty or representation is made by Commercial Asset Group, Inc. or its personnel. All interested parties must independently verify accuracy and completeness. As well, any projections, assumptions, opinion, or estimates are used for example only and do not represent the current or future performance of the identified property. Your tax, financial, legal and toxic substance advisors should conduct a careful investigation of the property and its suitability for your needs, including land use limitations. The property is subject to prior lease, sale, change in price, or withdrawal from the market without notice.

LEASE RATE

\$5.00 PSF/MO, MG

SPACE SIZE

SUITE 250: ±743 RSF

SUITE 402: ±794 RSF

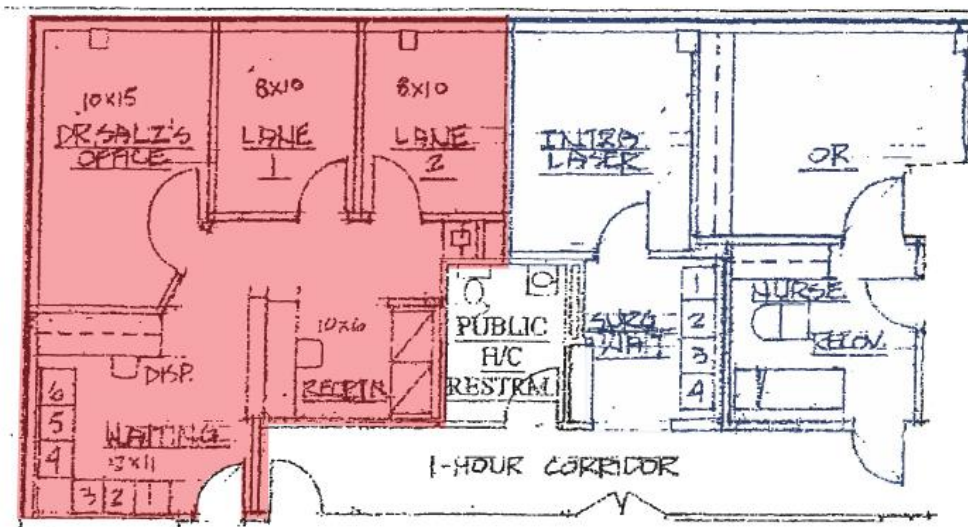
PARKING

MONTHLY UNRESERVED PARKING IN THE SURFACE LOT AT \$200/MO

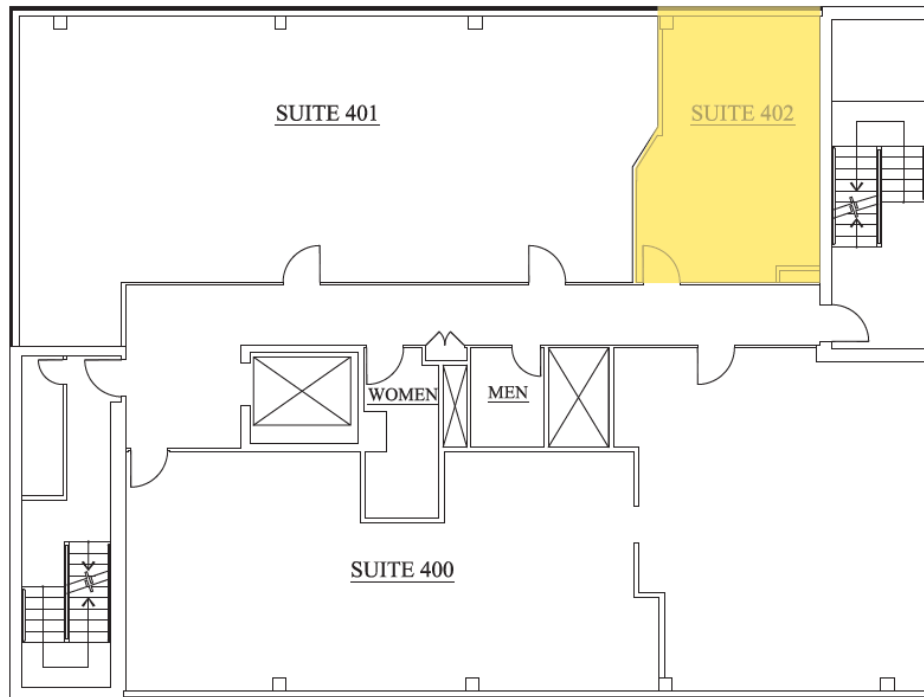
CITY LOT ACROSS THE STREET AT \$85.00 & 2 HOURS FREE FOR VISITORS IN THE CITY LOT

- Medical space in a medical building on La Cienega Blvd just off Wilshire Blvd
- Located in upscale neighborhood in prime Beverly Hills
- Neighboring tenants include Starbucks, Subway, Pure Barre, Saban Theatre, new metro station, Hot 8 Yoga, Cedars Sinai, and Olympia Medical, as well as numerous service-oriented tenants serving the daily needs of the residents of Beverly Hills
- Valet parking available
- Elevator access to all floors
- Tenant controlled central A/C
- Pharmacy on site

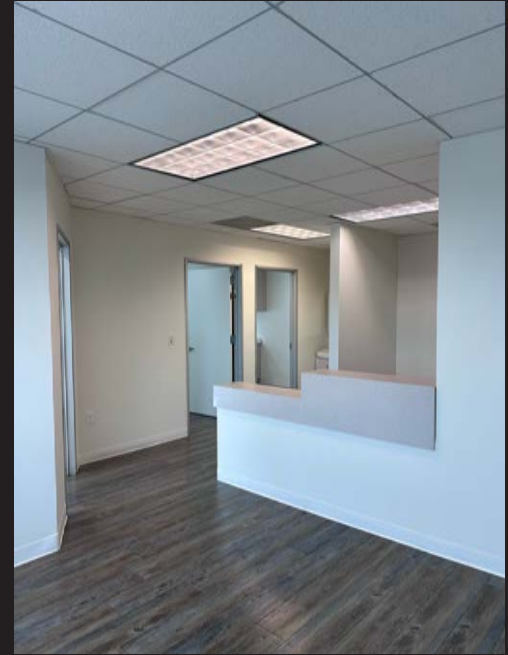
SUITE 250 FLOOR PLAN (±743 RSF)



SUITE 402 FLOOR PLAN (±794 RSF)



INTERIOR PHOTOS



NEIGHBORING TENANTS



Cedars Sinai

LAWRY'S THE PRIME RUB

Matsuhisa Beverly Hills

SPICE AFFAIR BEVERLY HILLS THE BEST INDIAN RESTAURANT IN L.A.

pure barre

SUBWAY



SABAN THEATRE

M NEW WILSHIRE/LA CIENEGA METRO STATION, COMING 2025

HOT YOGA

0.9 MILES TO CEDARS SINAI



COMMERCIAL
ASSET GROUP

NEWMARK



Daniel Chiprut

Executive Vice President
Commercial Asset Group
D 310.275.8222
daniel@cag-re.com
Lic. 01808709

Adam Funk

Managing Director
Commercial Asset Group
310.666.0124
afunk@cagre.com
Lic. 02129715

Steven Salas

Senior Managing Director
Newmark
D 310.508.0660
steven.salas@nmrk.com
Lic. 01232955

Commercial Asset Group

1801 Century Park East, Ste 1550
Los Angeles, CA 90067
P 310.275.8222 F 310.275.8223
www.cagre.com Lic. 01876070