

CBRE

 **BMarko**TM
STRUCTURES

51,528 SF
For Sublease

2624

Weaver Way

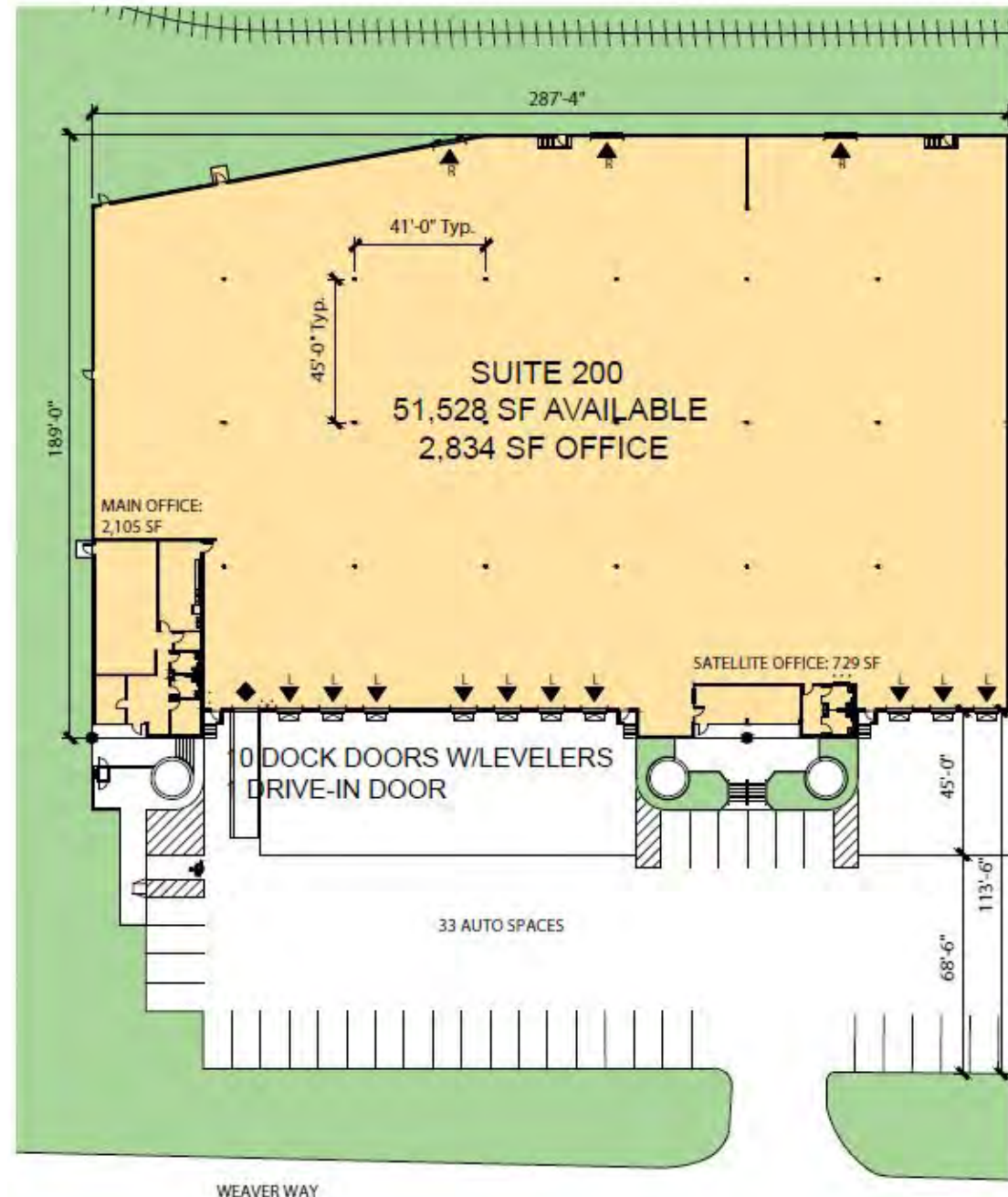
Atlanta, GA 30340

Floor Plan

Suite 200

51,528 SF

2,834 SF office





Space Highlights



Through 7/31/2027
Sublease Term



10 dock high doors
with levelers



2,834 SF
of office



1 Oversized
drive-in door



26'
clear height



33
auto parking



115' truck court with
60' concrete pad

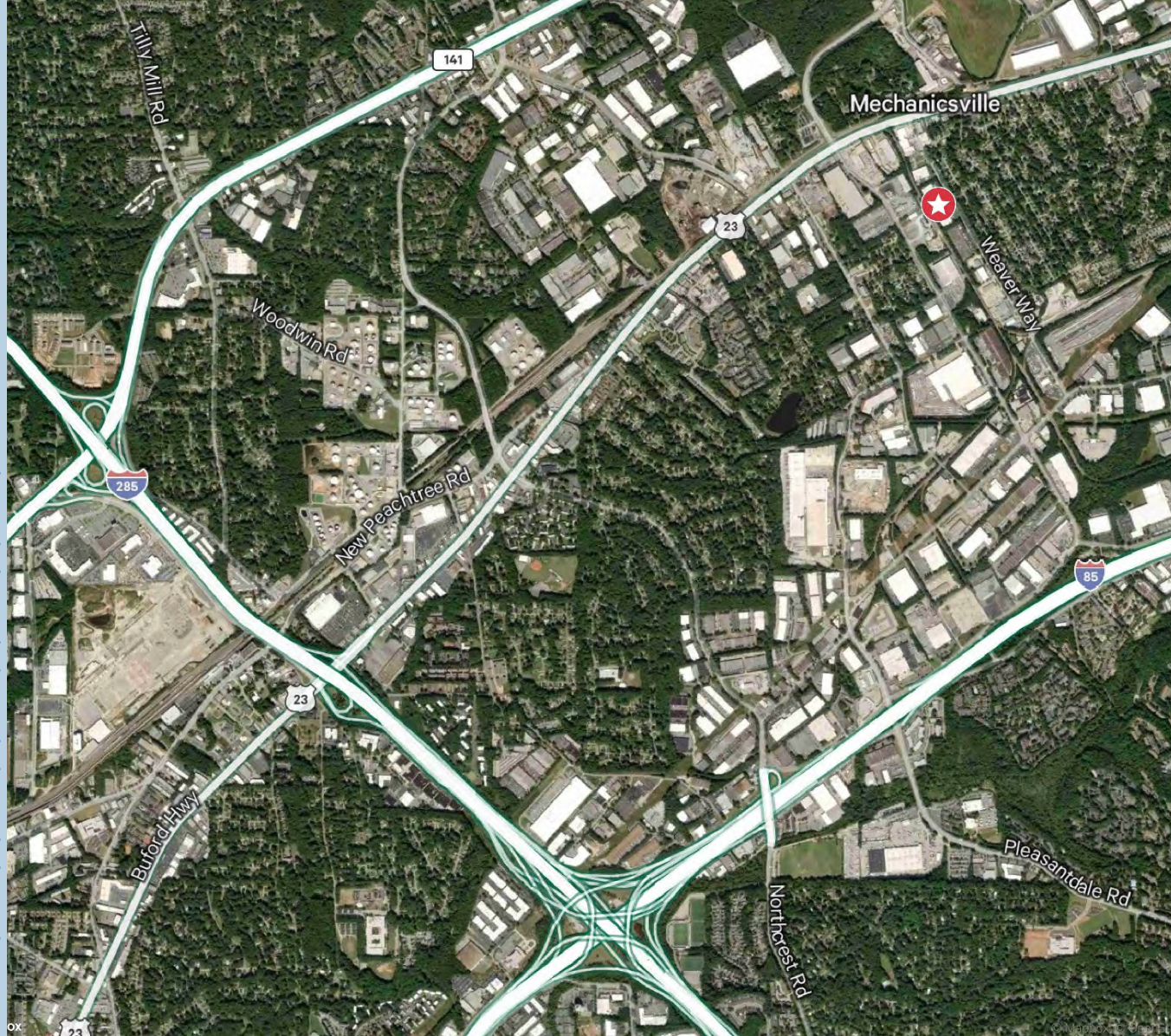


Front Load
configuration

2624

Weaver Way

Atlanta, GA 30340



For More Information, Please Contact:

James Caruso

+1 404 923 1402

james.caruso@cbre.com

Chris Dempsey

+1 404 504 7882

chris.dempsey@cbre.com

CBRE, Inc.

+1 404 504 7900

cbre.com/atlanta

CBRE

© 2025 CBRE, Inc. All rights reserved. This information has been obtained from sources believed reliable but has not been verified for accuracy or completeness. CBRE, Inc. makes no guarantee, representation or warranty and accepts no responsibility or liability as to the accuracy, completeness, or reliability of the information contained herein. You should conduct a careful, independent investigation of the property and verify all information. Any reliance on this information is solely at your own risk.