

Hill Street Center

387 Hill Street, Atlanta, GA



Available 1,030 SF
Rate \$14 / SF
Type NNN
Term Negotiable

Retail space available at 387 Hill Street SE in Atlanta's vibrant Grant Park neighborhood. This 3,410 SF Shell-anchored center includes a 1,030 SF unit ideal for retail or service-based businesses. Built in 2003, the property offers excellent freeway visibility, signage opportunities, and a strong parking ratio of 5.87/1,000 SF. Located on a bus line with easy access to I-20, this site benefits from steady traffic and a dense urban customer base.

Features

- Anchored by Shell
- NWQ of I-20 and Hill Street
- Great visibility
- Strong demographics and traffic
- Rent = \$1,202 / month
- NNN = \$500 / month

Traffic Counts

- Hill Street 19,351 VPD
- I-20 WB Exit Ramp 8,110 VPD

2025 Regis Online

Demographics

	1 Mile	3 Mile	5 Mile
Population	25,378	199,880	377,266
Households	11,447	96,170	175,338
Avg Household Income	\$109,843	\$131,940	\$140,433

2025 Regis Online



Information presented has been gathered from sources deemed reliable, but is not guaranteed by Majors Management, LLC, or its employees, and is subject to change, corrections, errors and omissions, or withdrawal without notice.

Leasing Information

770-338-2620
leasing@majorsmgmt.com



MajorsManagement.com

Majors Management, LLC

1255 Lakes Pkwy, #180
Lawrenceville, GA 30043



Interior



Interior



Exterior



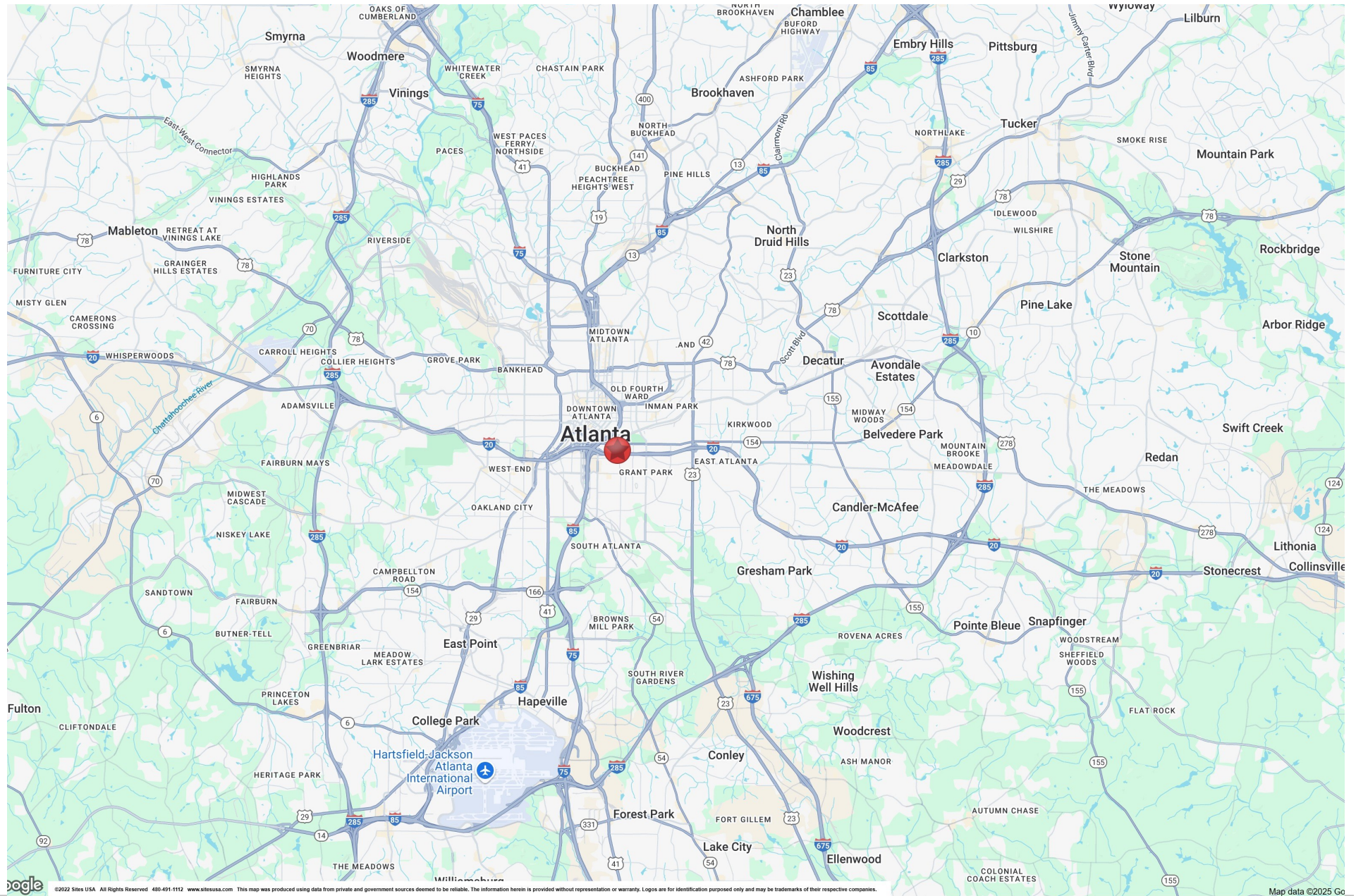
Exterior

Leasing Information
 770-338-2620
leasing@majorsmgmt.com



MAJORS
 MANAGEMENT

*This information is deemed reliable,
 however, we make no guarantee,
 warranty or representation as to the
 completeness or accuracy thereof.*



Leasing Information

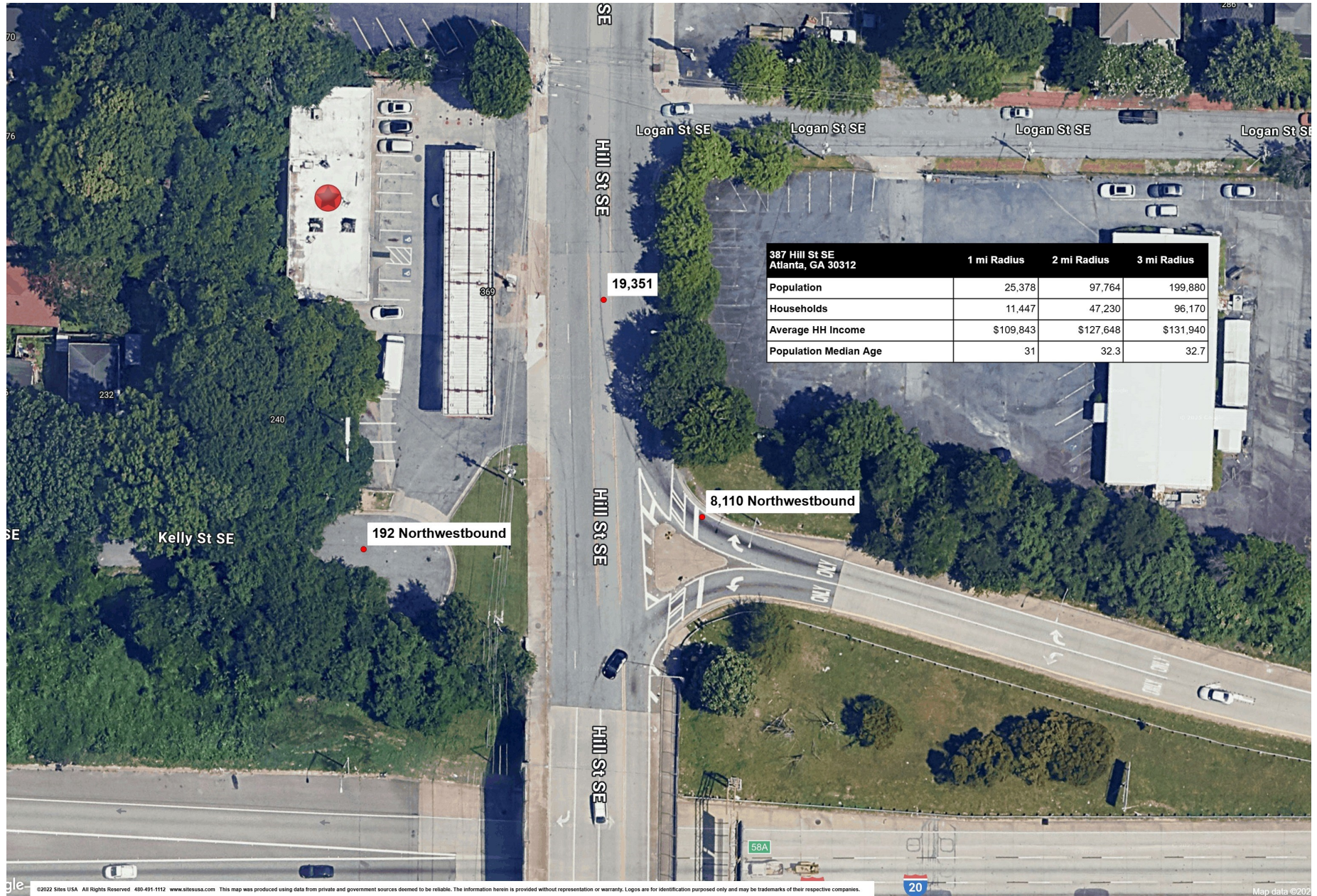


This information is deemed reliable, however, we make no guarantee, warranty or representation as to the completeness or accuracy thereof.



MAJORS
MANAGEMENT

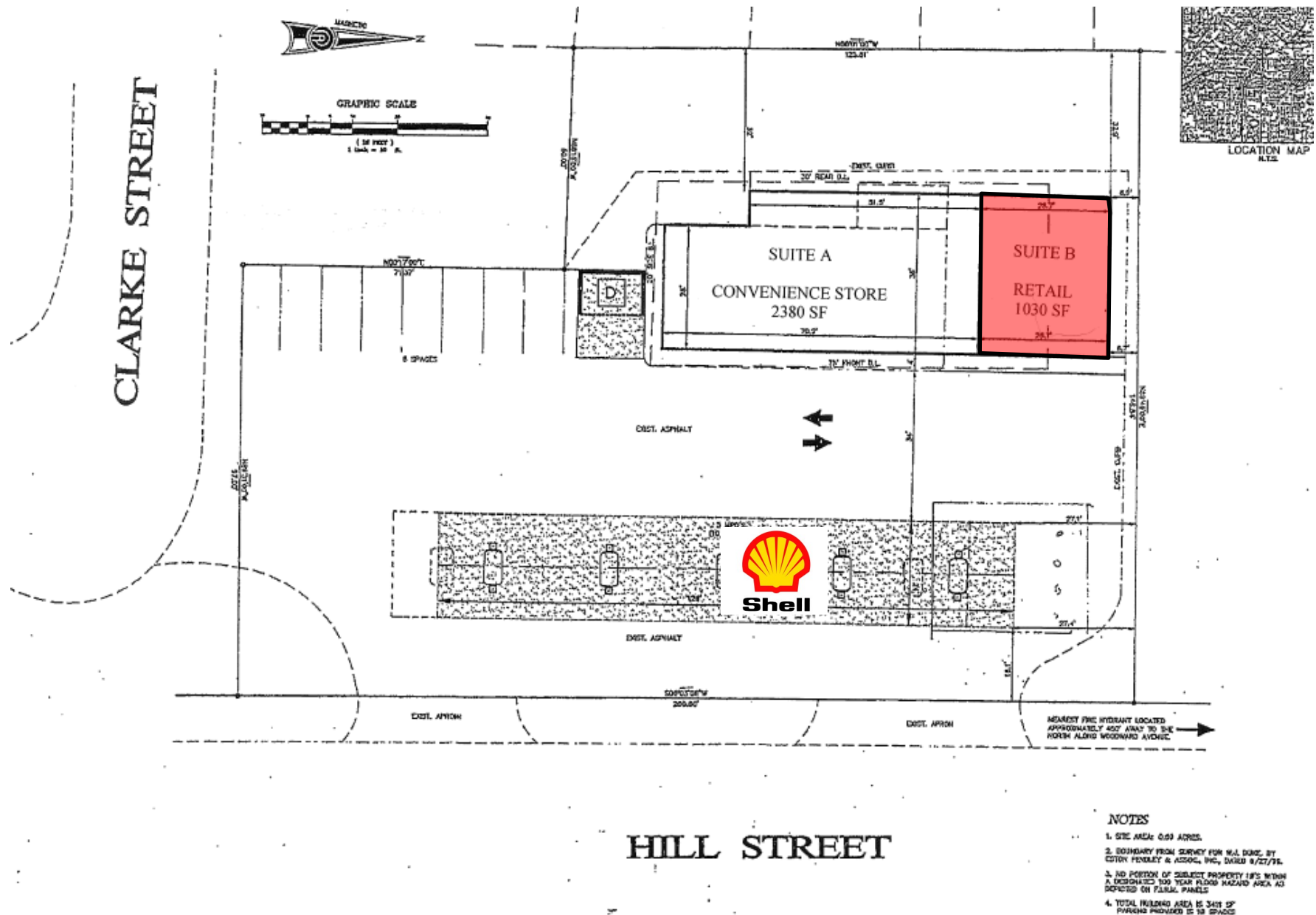
This information is deemed reliable, however, we make no guarantee, warranty or representation as to the completeness or accuracy thereof.



Leasing Information
770-338-2620
leasing@majorsmgmt.com



*This information is deemed reliable,
however, we make no guarantee,
warranty or representation as to the
completeness or accuracy thereof.*



Leasing Information
770-338-2620
leasing@majorsmgmt.com



This information is deemed reliable, however, we make no guarantee, warranty or representation as to the completeness or accuracy thereof.

387 Hill St SE Atlanta, GA 30312		1 mi radius	3 mi radius	5 mi radius
Population				
2025 Estimated Population		25,378	199,880	377,266
2030 Projected Population		27,514	210,602	388,169
2020 Census Population		23,021	179,544	343,676
2010 Census Population		16,012	148,325	296,428
Projected Annual Growth 2025 to 2030		1.7%	1.1%	0.6%
Historical Annual Growth 2010 to 2025		3.9%	2.3%	1.8%
2025 Median Age		31.0	32.7	34.1
Households				
2025 Estimated Households		11,447	96,170	175,338
2030 Projected Households		12,940	103,109	183,521
2020 Census Households		9,449	82,865	155,064
2010 Census Households		6,958	64,978	127,152
Projected Annual Growth 2025 to 2030		2.6%	1.4%	0.9%
Historical Annual Growth 2010 to 2025		4.3%	3.2%	2.5%
Race and Ethnicity				
2025 Estimated White		38.2%	42.0%	40.5%
2025 Estimated Black or African American		48.3%	45.2%	47.2%
2025 Estimated Asian or Pacific Islander		5.6%	5.7%	5.5%
2025 Estimated American Indian or Native Alaskan		0.2%	0.2%	0.2%
2025 Estimated Other Races		7.7%	6.8%	6.5%
2025 Estimated Hispanic		7.1%	6.4%	6.0%
Income				
2025 Estimated Average Household Income		\$109,843	\$131,940	\$140,433
2025 Estimated Median Household Income		\$76,482	\$96,602	\$99,327
2025 Estimated Per Capita Income		\$50,776	\$64,119	\$65,697

Leasing Information
770-338-2620
leasing@majorsmgmt.com



This information is deemed reliable, however, we make no guarantee, warranty or representation as to the completeness or accuracy thereof.