



DOCTOR'S ROW OFFICE SUITE FOR LEASE

3939 Houma Boulevard Bldg. 3 Ste 9, Metairie, LA 70006

ELAINE PELTIER • ASSOCIATE

OFFICE: 504.414.0703

MOBILE: 504.717.3670

epeltier@southeastcre.com

MATT EATON, CCIM • PARTNER

OFFICE: 504.414.0703

MOBILE: 504.339.2136

matt@matteatonccim.com



PROPERTY DESCRIPTION

Southeast Commercial is pleased to offer this prime location office suite on Doctor's Row in Metairie, LA. The office is situated steps from East Jefferson General Hospital and numerous medical establishments. At the property, patients enter through a welcoming courtyard and into a spacious lobby. The office consists of three offices, two closets, and a bathroom. The property contains a large parking lot accommodating 60 plus cars to ensure easy access for patients and staff.

A short term lease is preferred.



OFFERING SUMMARY

Lease Rate: \$17.00 SF/YR (Modified Gross)

Building Size: 900 SF

DEMOGRAPHICS	5 MILES	10 MILES	15 MILES
Total Households	101,163	255,634	343,513
Total Population	232,708	587,169	820,510
Average HH Income	\$98,252	\$89,917	\$87,213

OFFICE SUITE FOR LEASE

PROPERTY SUMMARY





DOCTOR'S ROW OFFICE SUITE FOR LEASE

3939 Houma Boulevard Bldg. 3 Ste 9, Metairie, LA 70006

ELAINE PELTIER • ASSOCIATE

OFFICE: 504.414.0703

MOBILE: 504.717.3670

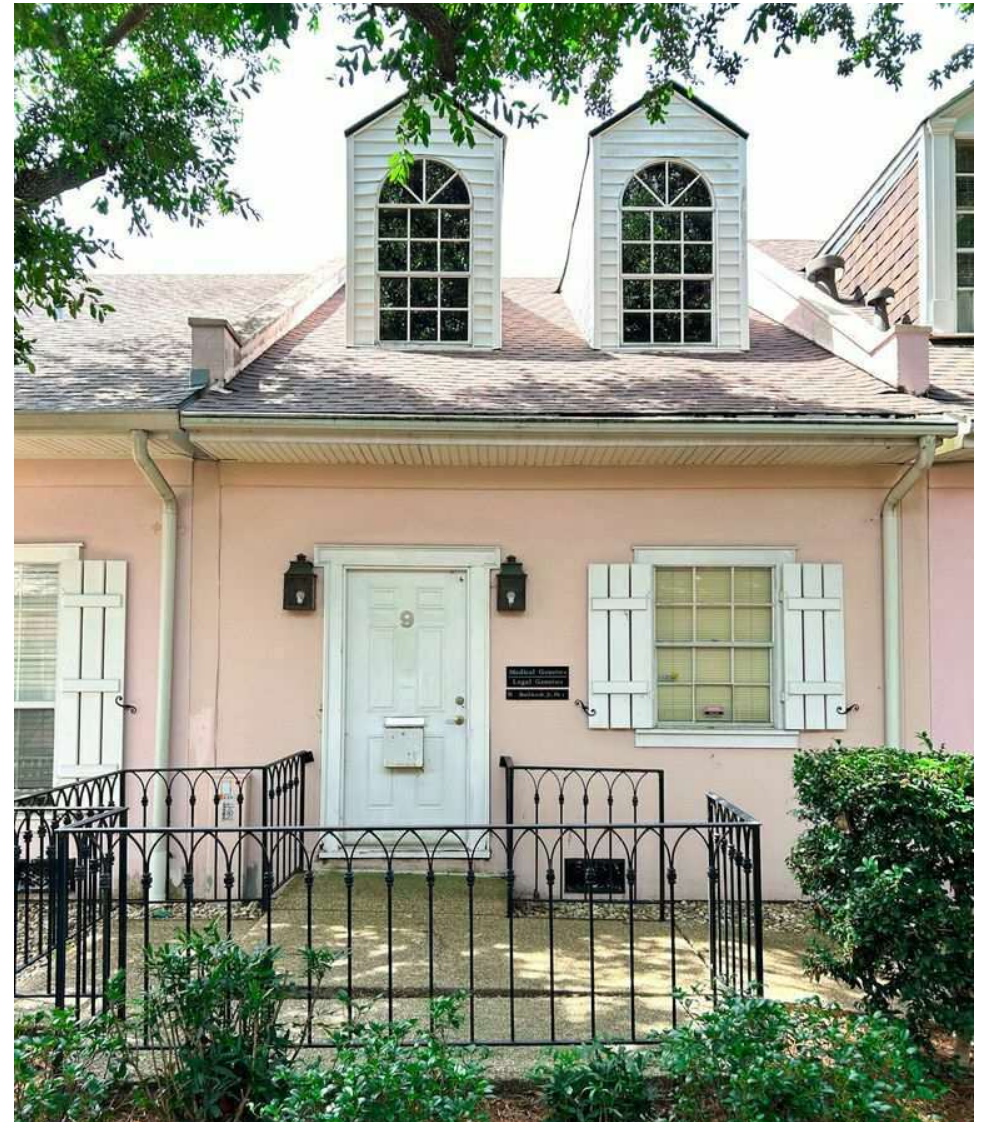
epeltier@southeastcre.com

MATT EATON, CCIM • PARTNER

OFFICE: 504.414.0703

MOBILE: 504.339.2136

matt@matteatonccim.com



OFFICE SUITE FOR LEASE

ADDITIONAL PHOTOS

SOUTHEAST COMMERCIAL REAL ESTATE | 2310 19th Street Gulfport, MS 39501 | <https://southeastcre.com>



**SOUTHEAST
COMMERCIAL**
REAL ESTATE



DOCTOR'S ROW OFFICE SUITE FOR LEASE

3939 Houma Boulevard Bldg. 3 Ste 9, Metairie, LA 70006

ELAINE PELTIER • ASSOCIATE

OFFICE: 504.414.0703

MOBILE: 504.717.3670

epeltier@southeastcre.com

MATT EATON, CCIM • PARTNER

OFFICE: 504.414.0703

MOBILE: 504.339.2136

matt@matteatonccim.com



OFFICE SUITE FOR LEASE

ADDITIONAL PHOTOS





DOCTOR'S ROW OFFICE SUITE FOR LEASE

3939 Houma Boulevard Bldg. 3 Ste 9, Metairie, LA 70006

ELAINE PELTIER • ASSOCIATE

OFFICE: 504.414.0703

MOBILE: 504.717.3670

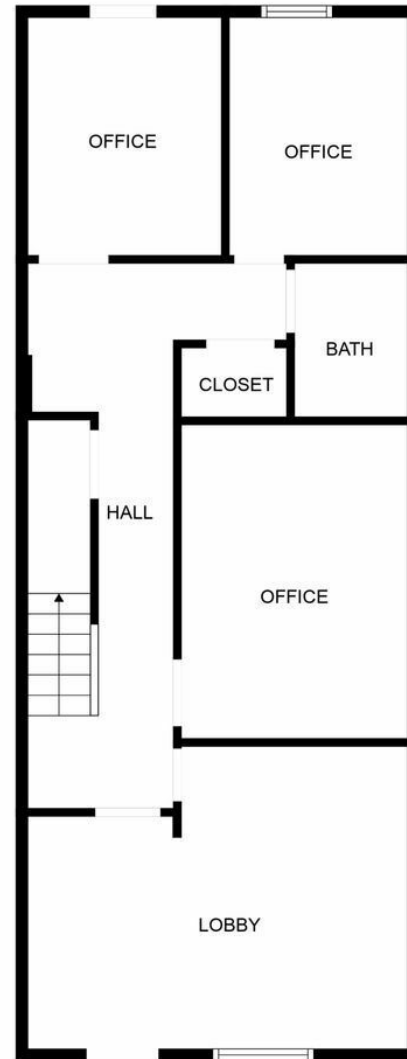
epeltier@southeastcre.com

MATT EATON, CCIM • PARTNER

OFFICE: 504.414.0703

MOBILE: 504.339.2136

matt@matteatonccim.com



OFFICE SUITE FOR LEASE

FLOOR PLAN





DOCTOR'S ROW OFFICE SUITE FOR LEASE

3939 Houma Boulevard Bldg. 3 Ste 9, Metairie, LA 70006

ELAINE PELTIER • ASSOCIATE

OFFICE: 504.414.0703

MOBILE: 504.717.3670

epeltier@southeastcre.com

MATT EATON, CCIM • PARTNER

OFFICE: 504.414.0703

MOBILE: 504.339.2136

matt@matteatonccim.com



OFFICE SUITE FOR LEASE

PROPERTY AERIAL

SOUTHEAST COMMERCIAL REAL ESTATE | 2310 19th Street Gulfport, MS 39501 | <https://southeastcre.com>



SOUTHEAST
COMMERCIAL
REAL ESTATE



DOCTOR'S ROW OFFICE SUITE FOR LEASE

3939 Houma Boulevard Bldg. 3 Ste 9, Metairie, LA 70006

ELAINE PELTIER • ASSOCIATE

OFFICE: 504.414.0703

MOBILE: 504.717.3670

epeltier@southeastcre.com

MATT EATON, CCIM • PARTNER

OFFICE: 504.414.0703

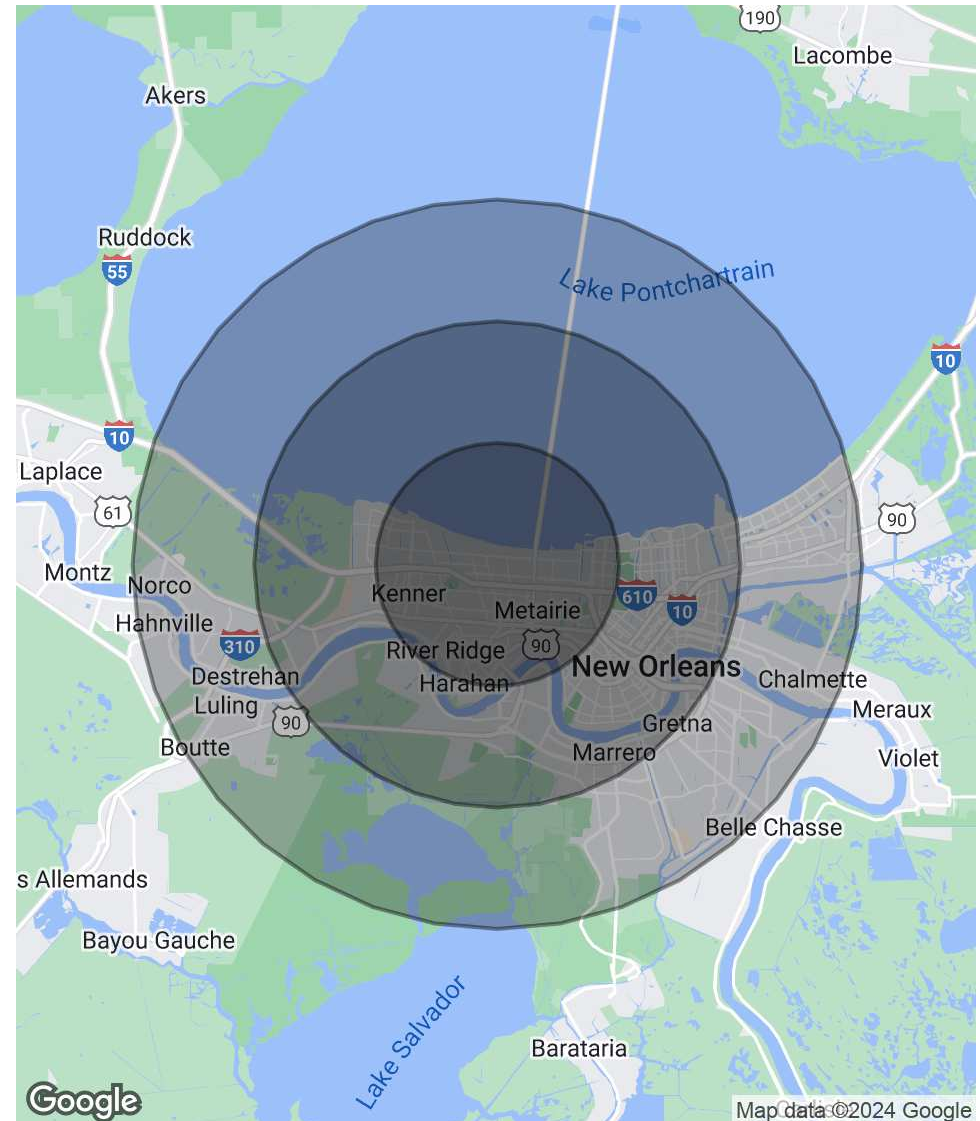
MOBILE: 504.339.2136

matt@matteatonccim.com

POPULATION	5 MILES	10 MILES	15 MILES
Total Population	232,708	587,169	820,510
Average Age	42	41	40
Average Age (Male)	41	40	39
Average Age (Female)	43	42	41

HOUSEHOLDS & INCOME	5 MILES	10 MILES	15 MILES
Total Households	101,163	255,634	343,513
# of Persons per HH	2.3	2.3	2.4
Average HH Income	\$98,252	\$89,917	\$87,213
Average House Value	\$354,377	\$385,017	\$346,510

Demographics data derived from AlphaMap



OFFICE SUITE FOR LEASE

DEMOGRAPHICS MAP & REPORT

