

555

MAIN STREET

CHESTER, NEW JERSEY



For Sale or Lease
±3,850 SF

Call for
Asking Pricing



CUSHMAN &
WAKEFIELD

// PROPERTY FEATURES



**STAND ALONE BUILDING,
PART OF AN OFFICE CONDO
COMPLEX**



**2 FLOORS – EACH FLOOR
±1,925 SF**



**TREMENDOUS VISIBILITY ON
MAIN STREET / ROUTE 24**



**GREAT LOCATION! 15
MINUTES FROM ROUTE 80,
287, 78 AND MORRISTOWN**

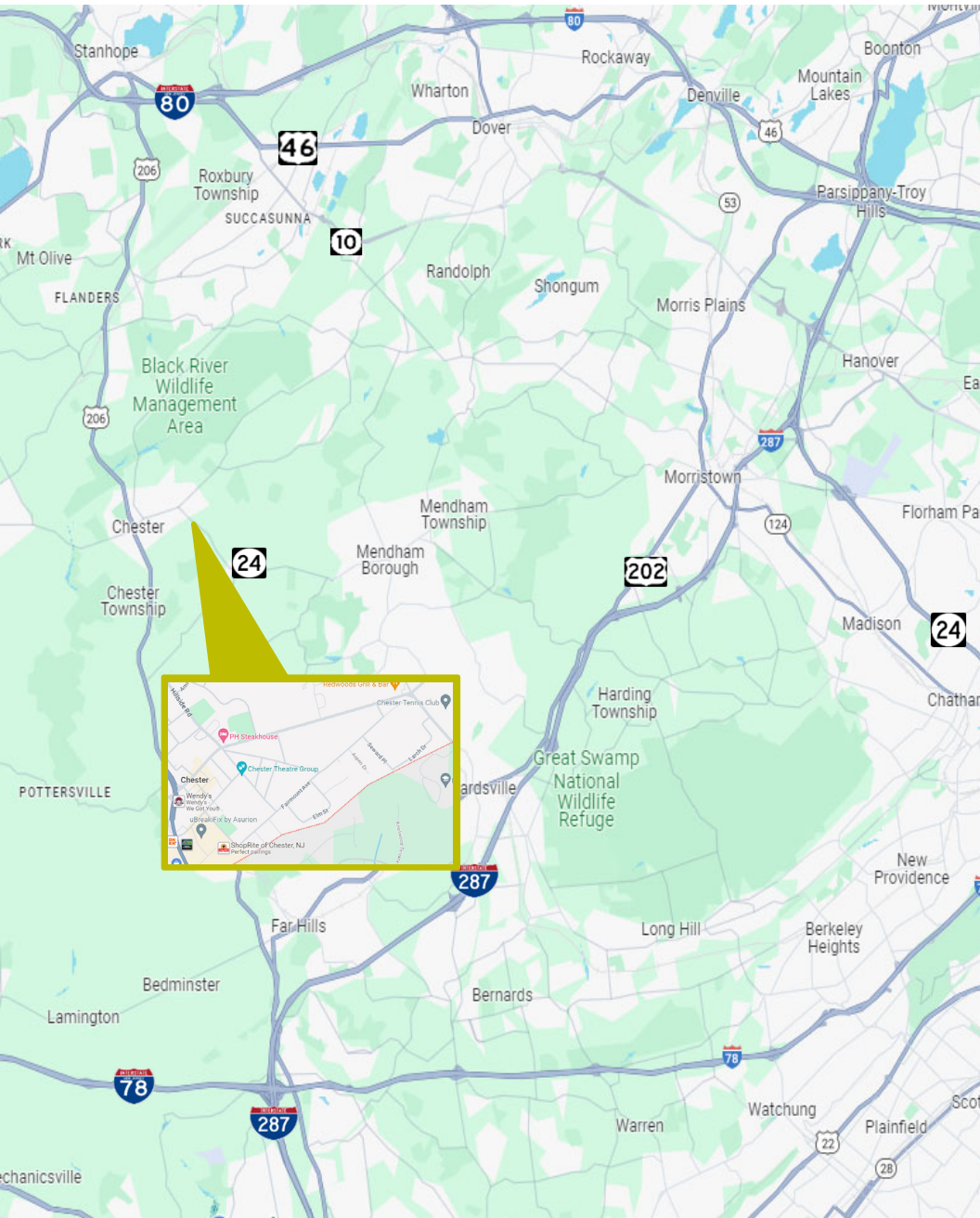


**WALKING DISTANCE TO ALL
AMENITIES AND THE CHARM
OF CHESTER**



**555 MAIN STREET
CHESTER, NEW JERSEY**

// GALLERY



// 555 MAIN STREET
CHESTER, NEW JERSEY

555

MAIN STREET

CHESTER, NEW JERSEY



// CONTACT

WARREN F. SEARLES, JR

Director

+1 973 908 6106

warren.searles@cushwake.com



©2024 Cushman & Wakefield. All rights reserved. The material in this presentation has been prepared solely for information purposes, and is strictly confidential. Any disclosure, use, copying or circulation of this presentation (or the information contained within it) is strictly prohibited, unless you have obtained Cushman & Wakefield's prior written consent. The views expressed in this presentation are the views of the author and do not necessarily reflect the views of Cushman & Wakefield. Neither this presentation nor any part of it shall form the basis of, or be relied upon in connection with any offer, or act as an inducement to enter into any contract or commitment whatsoever. NO REPRESENTATION OR WARRANTY IS GIVEN, EXPRESS OR IMPLIED, AS TO THE ACCURACY OF THE INFORMATION CONTAINED WITHIN THIS PRESENTATION, AND CUSHMAN & WAKEFIELD IS UNDER NO OBLIGATION TO SUBSEQUENTLY CORRECT IT IN THE EVENT OF ERRORS.