

# Central Office

145 E Holum St., DeForest, WI 53532



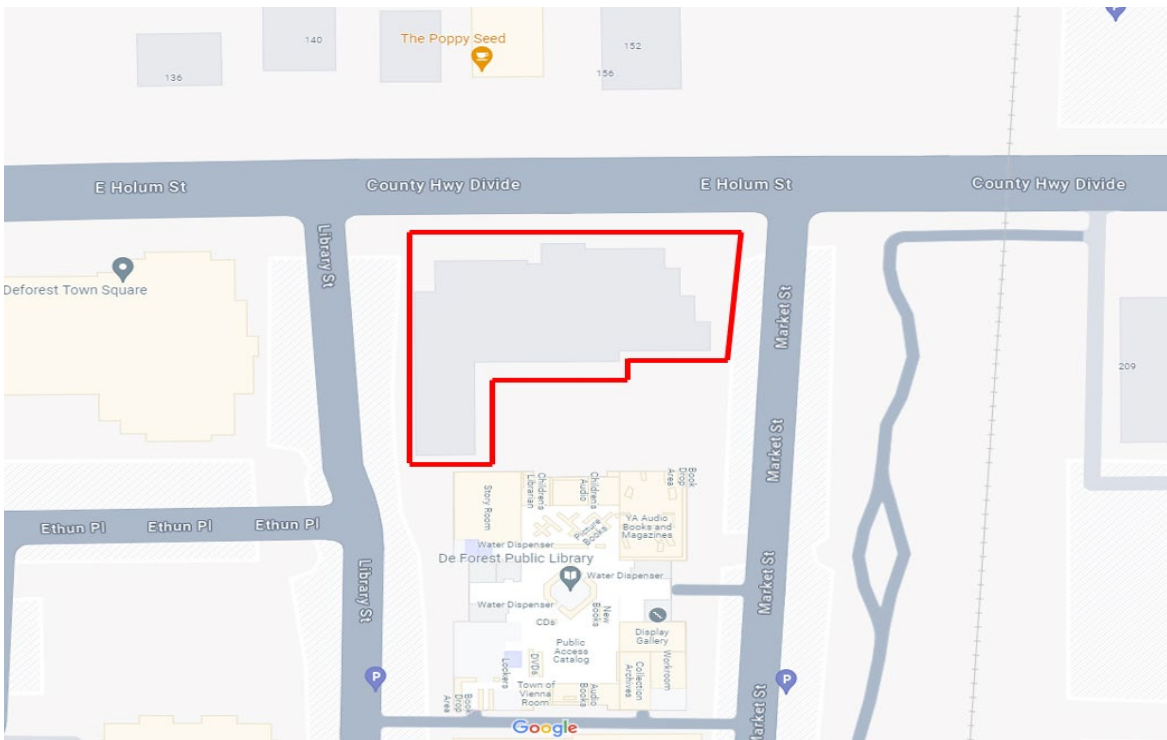
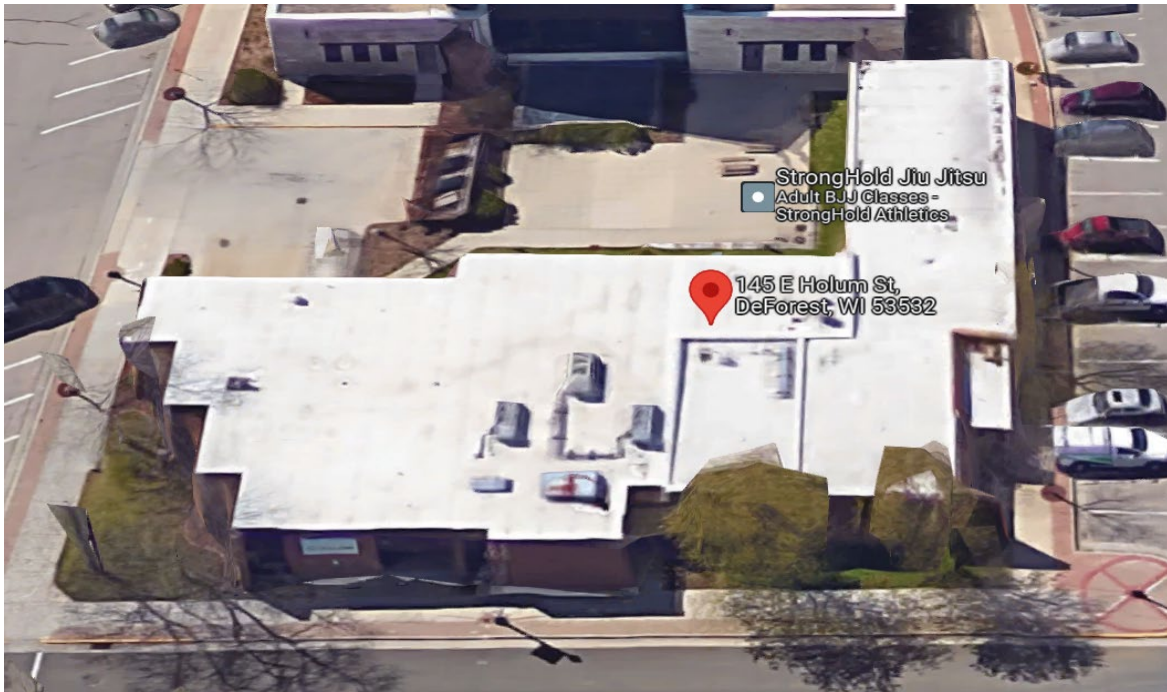
## Key Highlights

- .26 acres
- 9,200 SF
- Office/Retail
- Class B
- Single-story
- Sale Price: \$1,500,000

---

**Kirsty Cameron**  
+1 303 302 5121  
[kcameron@savills.us](mailto:kcameron@savills.us)

**Ross Ridders**  
+1 608 239 7724  
[rridders@cresa.com](mailto:rridders@cresa.com)



**For more information, please contact:**

**Kirsty Cameron**  
+1 303 302 5121  
[kcameron@savills.us](mailto:kcameron@savills.us)

**Ross Ridders**  
+1 608 239 7724  
[ridders@cresa.com](mailto:ridders@cresa.com)