

# ±17,340 SF

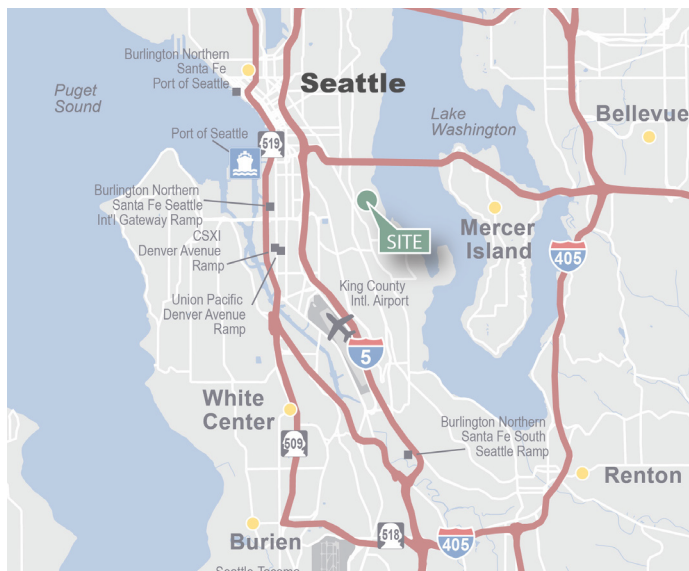
Office Space For Lease



## Prologis Park Seattle 16



2300 26th Ave S  
Seattle, WA 98144 USA



### LOCATION

- Close-in location
- Great access to I-5 & I-90
- 2 blocks from Light Rail Station ([East Link opening 2024](#))
- Within 1,000 ft of three fiber lines (Lumen, Wave & Zayo)

### FACILITY

- ±17,340 SF two-story office
- New carpeting and paint on 1st floor
- 4/1,000 Parking ratio
- Available now

 **Take a virtual tour!**  
[link here](#)

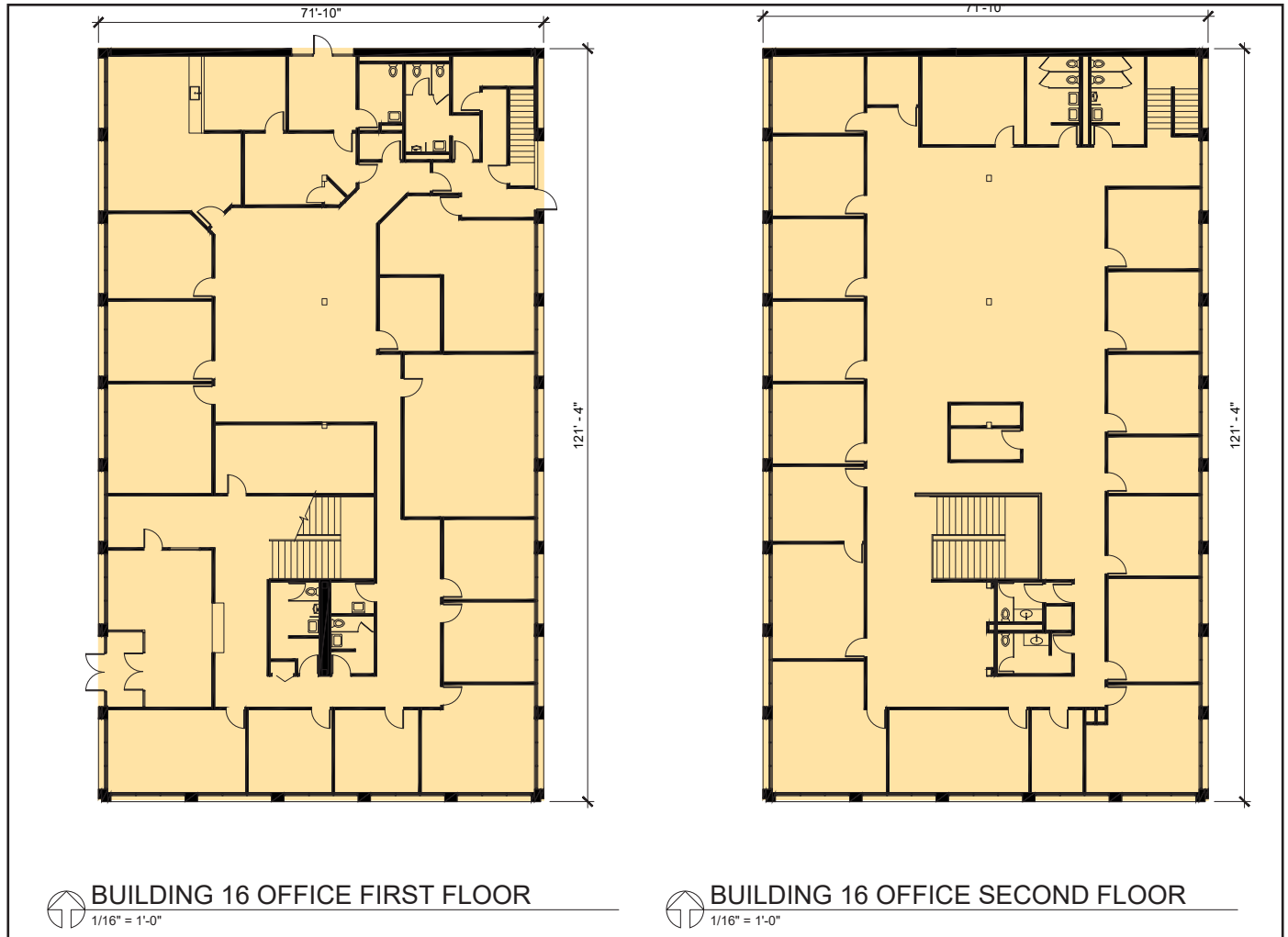
**Your single-source service for efficient move-in and operations: [prologisessentials.com](https://www.prologisessentials.com)**

±17,340 SF

Office Space For Lease



## Prologis Park Seattle 16



5628 Airport Way S  
Suite 238  
Seattle, WA 98109

**Matt Wood, SIOR**  
Partner  
+1 206 595 6814 Direct  
matt.wood@kbcadvisors.com



10900 NE 4th St  
Suite 1430  
Bellevue, WA 98004

**Evan Lugar**  
Senior Managing Director  
+1 206 850 6906 Direct  
evan.lugar@nrmk.com



**Rick Kolpa**  
Senior Vice President  
+1 206 414 7610 Direct  
rkolpa@prologis.com

**Prologis - Seattle**  
5900 Airport Way S  
Suite 300  
Seattle, WA 98108

**Prologis Headquarters**  
Pier 1, Bay 1  
San Francisco, CA 94111  
Main: +1 415 394 9000  
info@prologis.com  
www.prologis.com  
Twitter: @Prologis