

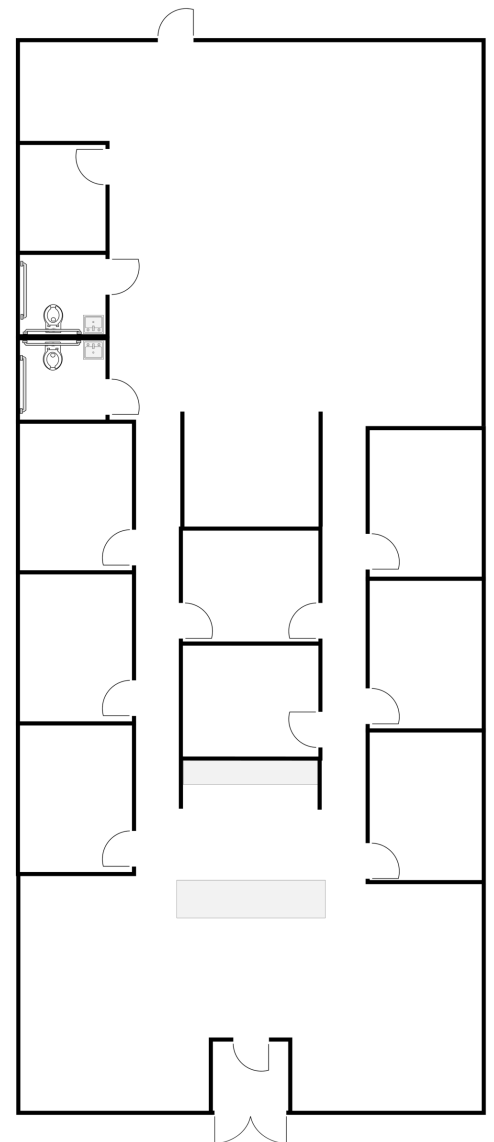
# Now Available SALON READY STORE FRONT ON EAST STATE

2160 East State Street | Hermitage, PA 16148



## Property & Building Highlights

- ⇒ **Excellent Signage** on East State Street on the Pylon Sign and on the building fascia
- ⇒ **Well known building** with established long-term tenants, including Rent-A-Center and Scotto's Pizza
- ⇒ **Outstanding location** on East State Street, with easy access to Buhl Farm Drive
- ⇒ **Locally owned and managed**
- ⇒ **No CAM or OPE charges**



Owned and managed by:



850 S. Hermitage Rd | Ste. B-1 | Hermitage | PA | 16148  
Phone: 888-792-0308 | Fax: 724-342-4582

Call today:  
724-342-4580

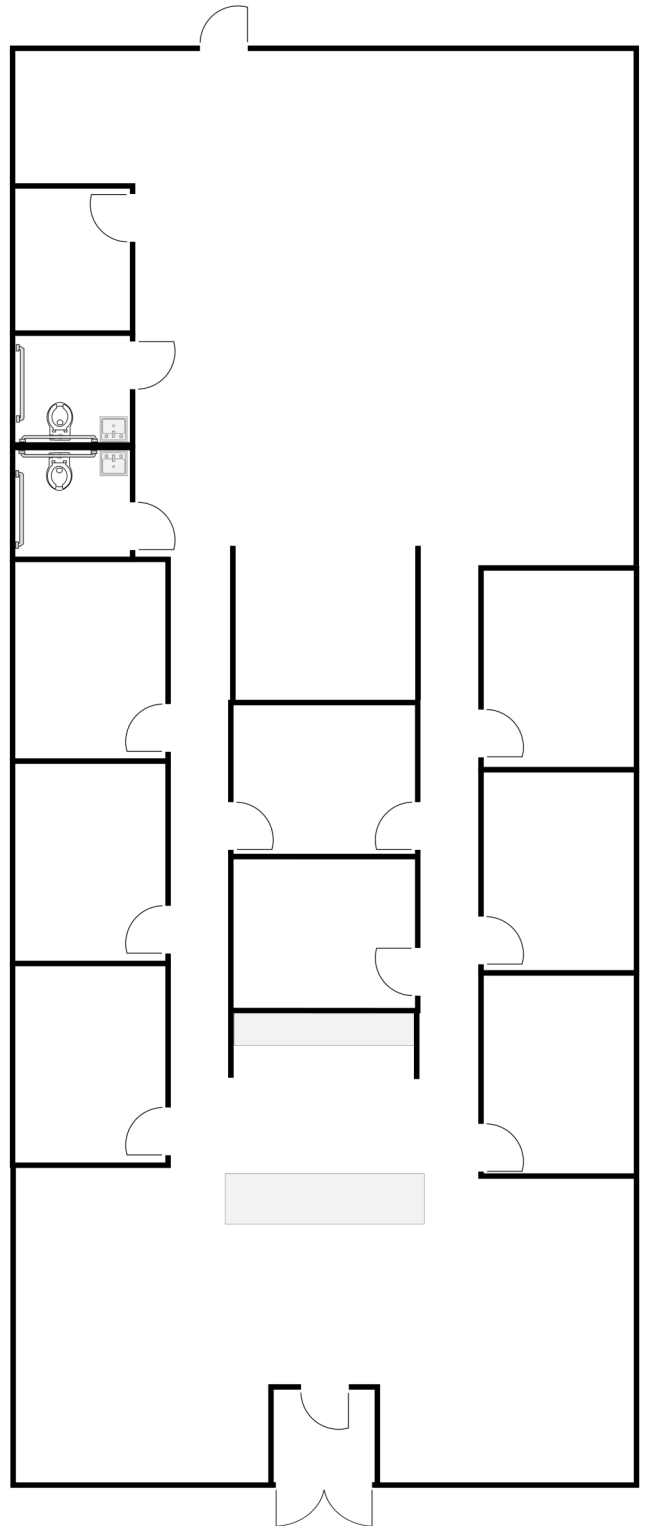
Now Available

# STORE FRONT ON EAST STATE STREET

2160 East State Street | Hermitage, PA 16148

For Lease  
3,370 Sq. Ft.

- ⇒ Beautiful Life-Proof Vinyl Flooring
- ⇒ Bright & Open Stylist Stations
- ⇒ Modern Reception Area Perfect for Retail
- ⇒ Spacious Shampoo Area
- ⇒ Multiple Rooms for Private Services
- ⇒ Located in an area perfect for walk-ins



Owned and managed by:



Call today: 724-342-4580