



FOR
LEASE

*±1,236 RSF office or medical suite for lease located in
the Hacienda Business Park of Pleasanton*

5933 CORONADO LN, PLEASANTON, CA 94588

FOR LEASE | 5933 CORONADO LN



±1,236 RSF for office or medical use

Open floor plan with break room
and sink

Within Hacienda Business Park

Walking distance to dining
and shopping

Minutes to I-580 & I-680

*Call for more information,
and pricing*

SIMON VOGT, SIOR

925.905.1112

simon.vogt@kidder.com

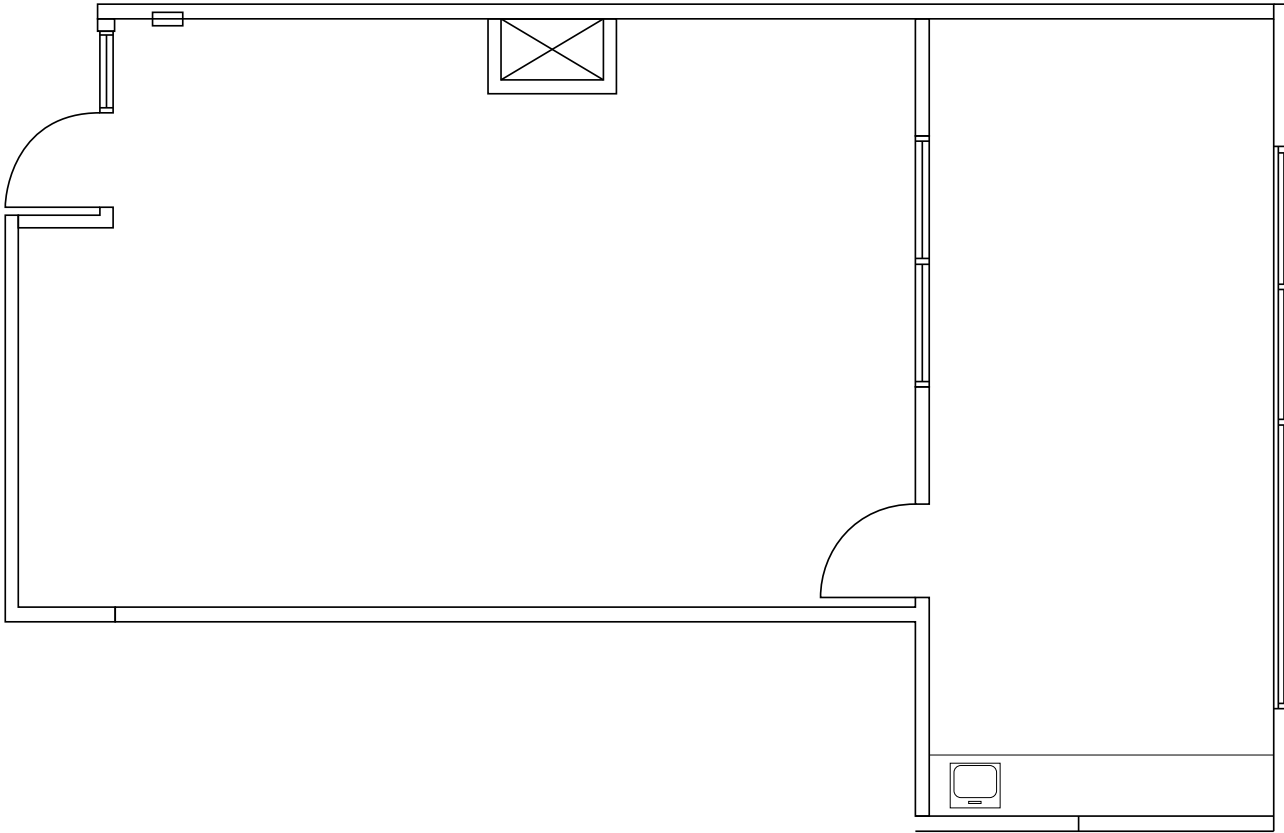
LIC N° 01879314

KIDDER.COM

This information supplied herein is from sources we deem reliable. It is provided without any representation, warranty, or guarantee, expressed or implied as to its accuracy. Prospective Buyer or Tenant should conduct an independent investigation and verification of all matters deemed to be material, including, but not limited to, statements of income and expenses. Consult your attorney, accountant, or other professional advisor. All Kidder Mathews designs are the sole property of Kidder Mathews. Branded materials and layouts are not authorized for use by any other firm or person.



FLOOR PLAN



±1,236 SF

AVAILABLE

CALL AGENT

FOR TOURS AND PRICING

NOW

AVAILABLE

SIMON VOGT, SIOR
925.905.1112
simon.vogt@kidder.com
LIC N° 01879314

KIDDER.COM

This information supplied herein is from sources we deem reliable. It is provided without any representation, warranty, or guarantee, expressed or implied as to its accuracy. Prospective Buyer or Tenant should conduct an independent investigation and verification of all matters deemed to be material, including, but not limited to, statements of income and expenses. Consult your attorney, accountant, or other professional advisor. All Kidder Mathews designs are the sole property of Kidder Mathews. Branded materials and layouts are not authorized for use by any other firm or person.



DEMOGRAPHICS

POPULATION

	1 Mile	3 Miles	5 Miles
2010 CENSUS	12,529	95,436	135,779
2020 CENSUS	15,689	117,277	174,229
2025 ESTIMATED	14,757	113,774	168,524
2030 PROJECTED	13,521	108,405	161,142

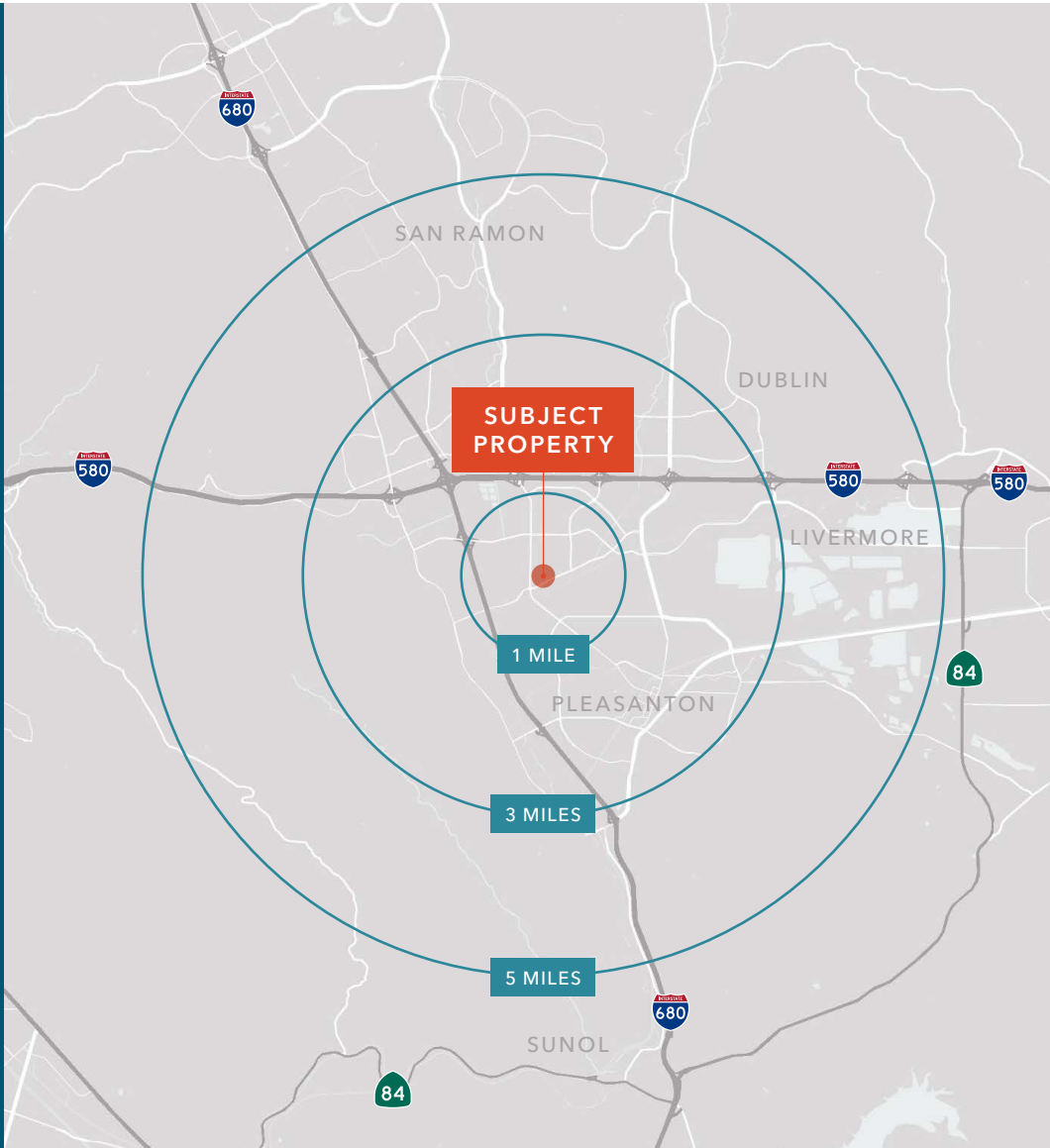
MEDIAN AGE & GENDER

	1 Mile	3 Miles	5 Miles
MEDIAN AGE	40.6	40.3	40.4
% FEMALE	50.2%	49.1%	49.6%
% MALE	49.8%	50.9%	50.4%

HOUSEHOLD INCOME

	1 Mile	3 Miles	5 Miles
2025 MEDIAN	\$213,948	\$189,435	\$205,808
2030 MEDIAN PROJECTED	\$212,712	\$189,237	\$205,620
2025 AVERAGE	\$245,075	\$233,836	\$255,317
2030 AVERAGE PROJECTED	\$242,869	\$232,056	\$253,308

Data Source: Regis Online, ©2025, Sites USA



KIDDER.COM

This information supplied herein is from sources we deem reliable. It is provided without any representation, warranty, or guarantee, expressed or implied as to its accuracy. Prospective Buyer or Tenant should conduct an independent investigation and verification of all matters deemed to be material, including, but not limited to, statements of income and expenses. Consult your attorney, accountant, or other professional advisor. All Kidder Mathews designs are the sole property of Kidder Mathews. Branded materials and layouts are not authorized for use by any other firm or person.



