

Property Summary



PROPERTY DESCRIPTION

Presenting a well-established strip retail plaza offering exceptional visibility and prominent signage opportunities. The property features ample parking, making it convenient for both tenants and customers. With popular regional tenants already in place, this plaza offers a stable and vibrant retail environment. Its established presence and high visibility make it an attractive destination for businesses seeking to capitalize on existing foot traffic and consumer recognition. This is a prime opportunity for businesses to join a thriving retail community and benefit from the existing regional tenant mix.

PROPERTY HIGHLIGHTS

- Floor-to-ceiling glass storefronts maximize visibility
- Flexible interior layout accommodates varied retail uses
- Prominent signage potential on high-profile frontage
- Ample on-site parking enhances tenant convenience
- Coastal location delivers steady consumer demand

OFFERING SUMMARY

Lease Rate:	\$23 SF/yr (\$5.25/sf NNN)
Number of Units:	17
Available SF:	905 - 2,753 SF
Lot Size:	1.46 Acres
Building Size:	24,000 SF

DEMOGRAPHICS	1 MILE	3 MILES	5 MILES
Total Households	3,878	16,144	38,354
Total Population	9,696	38,094	90,162
Average HH Income	\$137,386	\$118,593	\$103,732



VITOR DE SOUSA, CCIM

Retail Sales & Leasing
321.722.0707 x15
vitor@teamlbr.com

BLAKE WILSON

Sales and Leasing Associate
321.722.0707 x24
Bwilson@teamlbr.com

70 W. Hibiscus Blvd., Melbourne, FL 32901 • 321.722.0707 • teamlbr.com

Information contained herein has been obtained through sources deemed reliable but cannot be guaranteed as to its accuracy. A purchaser or lessee is expected to verify all information to his/her own satisfaction. Zoning information subject to change and not warranted. Always confirm current requirements with local governing agencies.

Additional Photos



VITOR DE SOUSA, CCIM

Retail Sales & Leasing
321.722.0707 x15
vitor@teamlbr.com

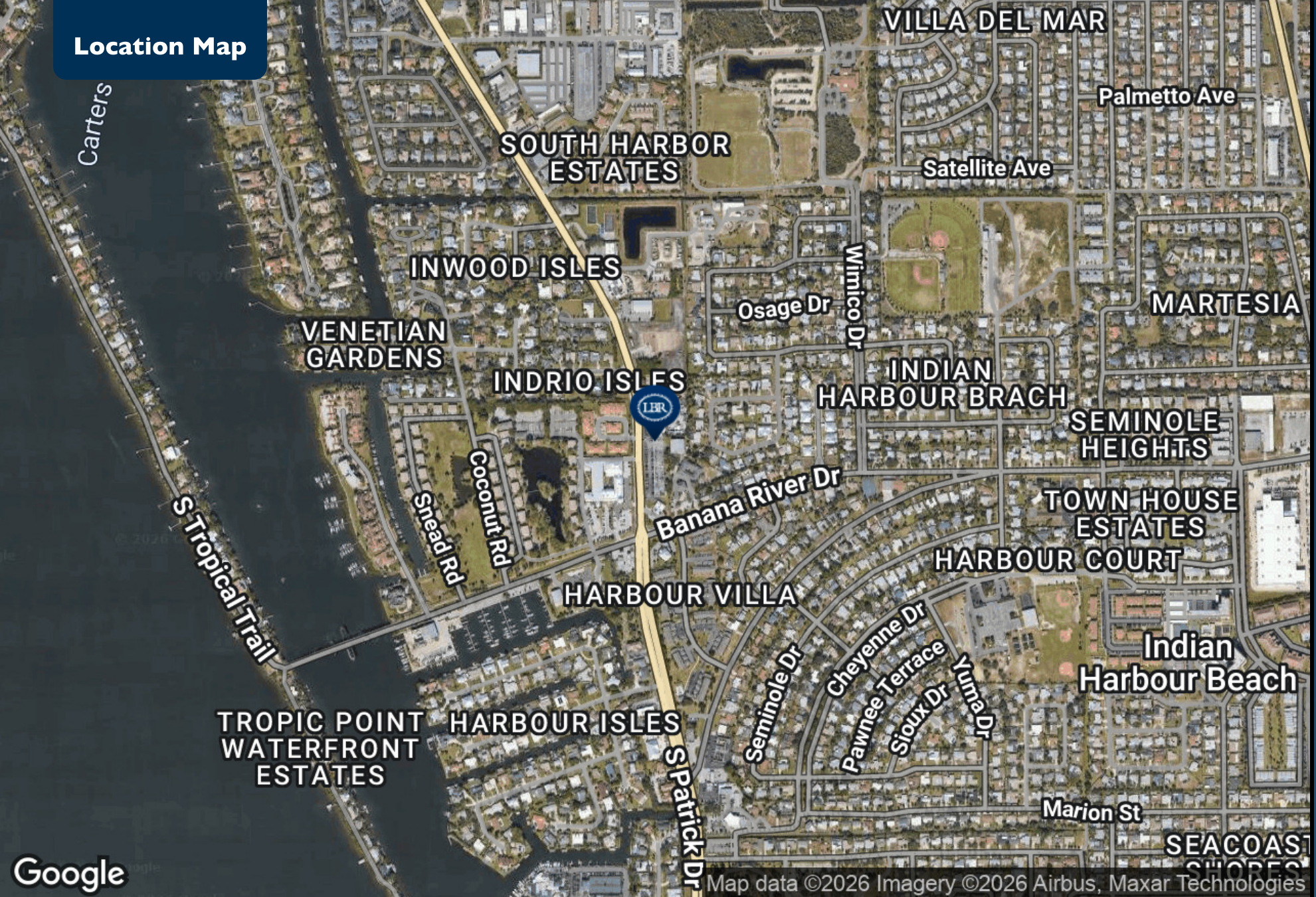
BLAKE WILSON

Sales and Leasing Associate
321.722.0707 x24
Bwilson@teamlbr.com

70 W. Hibiscus Blvd., Melbourne, FL 32901 • 321.722.0707 • teamlbr.com

Information contained herein has been obtained through sources deemed reliable but cannot be guaranteed as to its accuracy. A purchaser or lessee is expected to verify all information to his/her own satisfaction. Zoning information subject to change and not warranted. Always confirm current requirements with local governing agencies.

Location Map



Pines Plaza | 1873 South Patrick Drive, Indian Harbour Beach, FL 32937



VITOR DE SOUSA, CCIM

Retail Sales & Leasing
321.722.0707 x15
vitor@teamlbr.com

BLAKE WILSON

Sales and Leasing Associate
321.722.0707 x24
Bwilson@teamlbr.com

70 W. Hibiscus Blvd., Melbourne, FL 32901 • 321.722.0707 • teamlbr.com

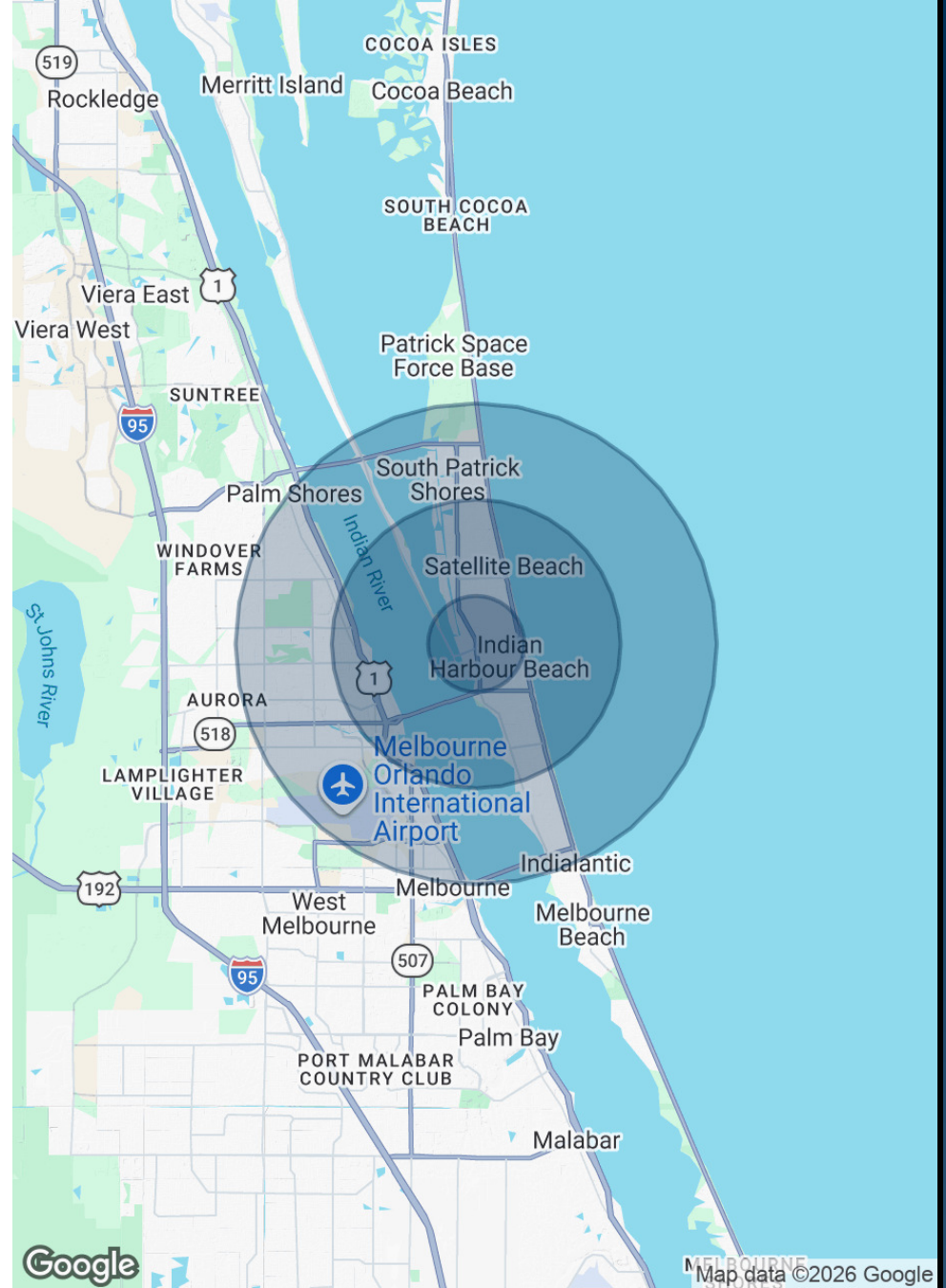
Information contained herein has been obtained through sources deemed reliable but cannot be guaranteed as to its accuracy. A purchaser or lessee is expected to verify all information to his/her own satisfaction. Zoning information subject to change and not warranted. Always confirm current requirements with local governing agencies.

Demographics Map & Report

POPULATION	1 MILE	3 MILES	5 MILES
Total Population	9,696	38,094	90,162
Average Age	47.7	44.9	44.7
Average Age (Male)	46.0	43.3	42.6
Average Age (Female)	46.9	46.2	46.1

HOUSEHOLDS & INCOME	1 MILE	3 MILES	5 MILES
Total Households	3,878	16,144	38,354
# of Persons per HH	2.5	2.4	2.4
Average HH Income	\$137,386	\$118,593	\$103,732
Average House Value	\$495,852	\$511,470	\$421,274

2023 American Community Survey (ACS)



Pines Plaza | 1873 South Patrick Drive, Indian Harbour Beach, FL 32937



VITOR DE SOUSA, CCIM

Retail Sales & Leasing
321.722.0707 x15
vitor@teamlbr.com

BLAKE WILSON

Sales and Leasing Associate
321.722.0707 x24
Bwilson@teamlbr.com

70 W. Hibiscus Blvd., Melbourne, FL 32901 • 321.722.0707 • teamlbr.com

Information contained herein has been obtained through sources deemed reliable but cannot be guaranteed as to its accuracy. A purchaser or lessee is expected to verify all information to his/her own satisfaction. Zoning information subject to change and not warranted. Always confirm current requirements with local governing agencies.