

NORTH ATTLEBORO MARKETPLACE

1360 SOUTH WASHINGTON STREET • NORTH ATTLEBORO, MASSACHUSETTS



LOCATION

Located on US Route 1 across from Emerald Square Mall (1.1 Million SF), North Attleboro Marketplace is strategically positioned in this super-regional retail market, only a half mile from Rt. 295

SPACE

536,293± SF

NEARBY

Across from Target, Best Buy, Michaels, PetSmart. Shares access with Panera Bread, Longhorn, Old Navy, Sketchers and Marshalls

NOTES

Anchored by Lowe's, Wal-Mart Supercenter, Jo-Ann Fabrics, Dick's Sporting Goods, DSW, and Raymour & Flanigan Outlet Store.



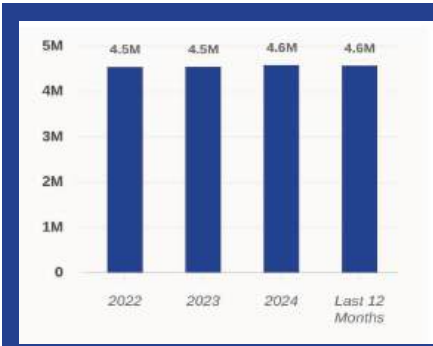
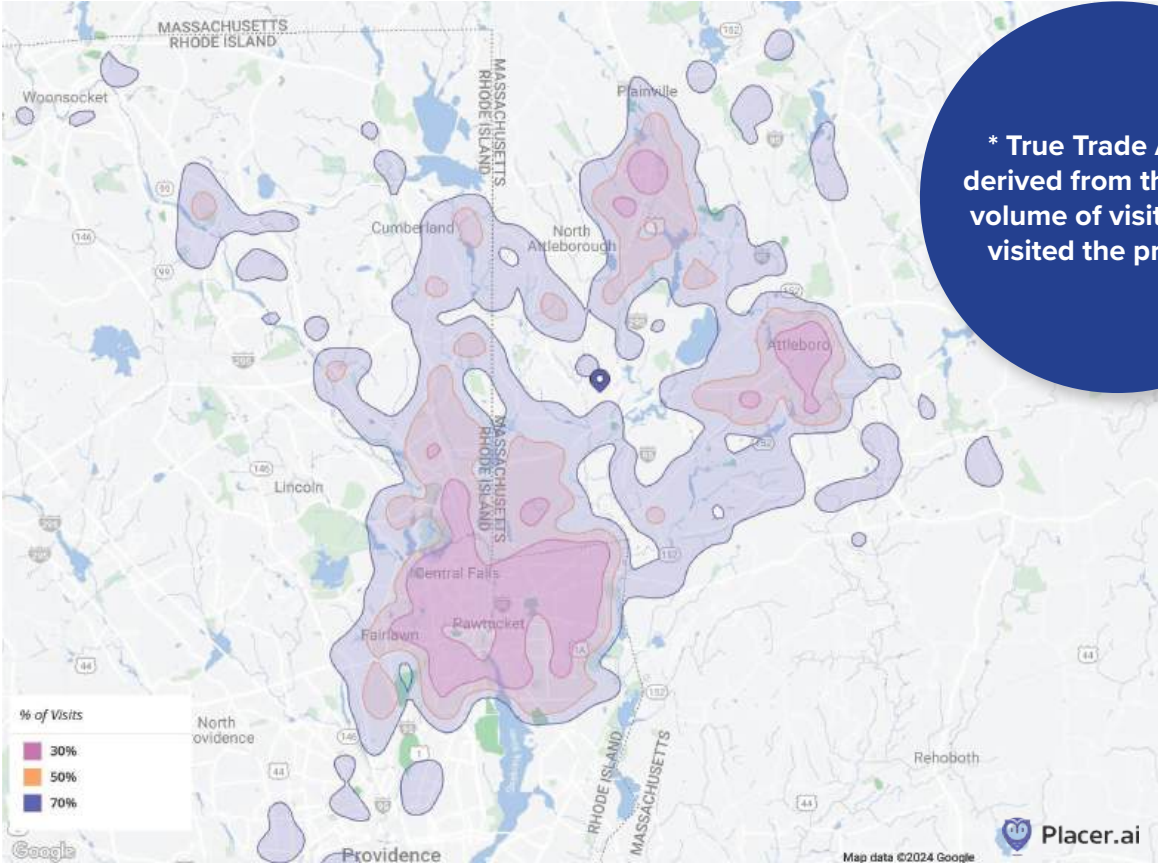
NORTH ATTLEBORO MARKETPLACE

LOCATION & DEMOGRAPHICS

LAT/LON		GLA		PARKING	
41.940906/-71.3467605		526,293± SF		2,304	
TRAFFIC COUNT		CARS/DAY			
Route 1		24,000			
Route 95		102,000			
Route 295		54,000			
2024	1-MILE	3-MILE	5-MILE	10-MILE	
Estimated Population	1,996	47,101	190,326	610,380	
Estimated Average HH Income	\$182,221	\$122,969	\$104,609	\$110,442	



TRUE TRADE AREA



FOOT TRAFFIC TREND

Visits YoY: +1%

75.81% of visits are from visitors who visited at least two times

SITE PLAN



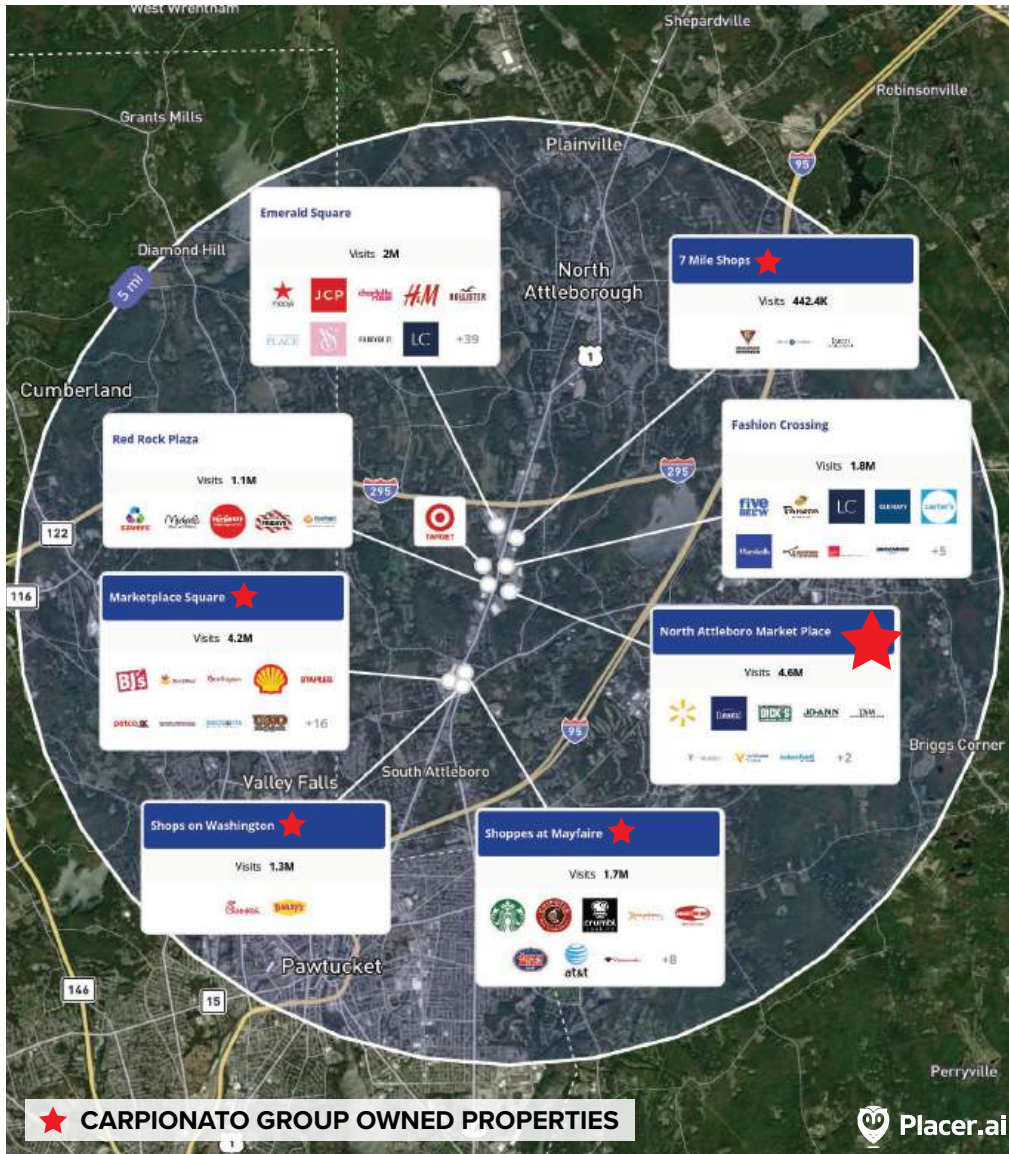
TENANTS	
	SQUARE FEET
Retail A	32,000 SF
Proposed Tenant	10,010 SF
Crunch Fitness	35,000 SF
Ivy Rehab	2,711 SF
Raymour & Flanigan Outlet Store	33,892 SF
GoldFish Swim School	8,514 SF
DSW	15,000 SF
Dick's Sporting Goods	50,025 SF
Lowe's	140,000 SF
Wal-Mart Supercenter	186,292 SF
Blinds To Go	3,502 SF
Sprint	2,294 SF
Vitamin Shoppe	3,014 SF

AVAILABLE SPACESIGNED TENANTPROPOSED



1414 Atwood Avenue • Johnston, RI • 02919 • 401.273.6800 • www.CarpionatoGroup.com

TRADE MAP



FOR MORE INFORMATION, CONTACT:

Peter Flynn • 401.273.6800 x141 • PFlynn@CarpionatoGroup.com

Joe Pierik • 401.273.6800 x126 • JPierik@CarpionatoGroup.com