

FOR SALE OR LEASE

1615 BROADWAY
OAKLAND, CA

**LEE &
ASSOCIATES**
COMMERCIAL REAL ESTATE SERVICES



FOR SALE OR LEASE

1615 BROADWAY | OAKLAND, CA



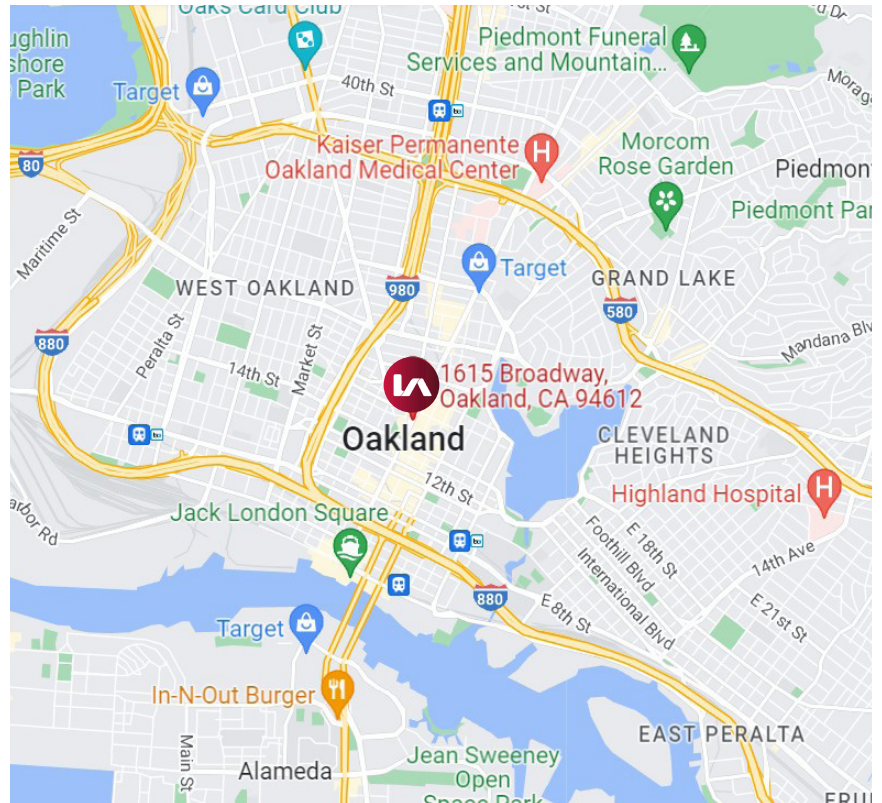
COMMERCIAL REAL ESTATE SERVICES

LISTING DATA:

- 2,650± SF
- Full Floor Space
- Direct Elevator Access
- 4 Private Offices
- 1 Conference Room
- Reception
- Kitchen/Break Room
- Heart of Downtown Oakland
- Can be Converted to Residential

ECONOMIC DATA:

- Contact Exclusive Agents for Pricing
- Available:



EXCLUSIVE AGENTS:

Neil Cowperthwaite, Associate
E \\ ncowperthwaite@lee-associates.com
P \\ 510.903.7603 | LIC# 01912683

Dave McCarty, Principal
E \\ dmccarty@lee-associates.com
P \\ 510.903.7601 | LIC# 01748283

Lee & Associates Oakland Commercial Real Estate | 520 3rd Street, Suite 105, Oakland, CA 94607 | www.lee-associates.com

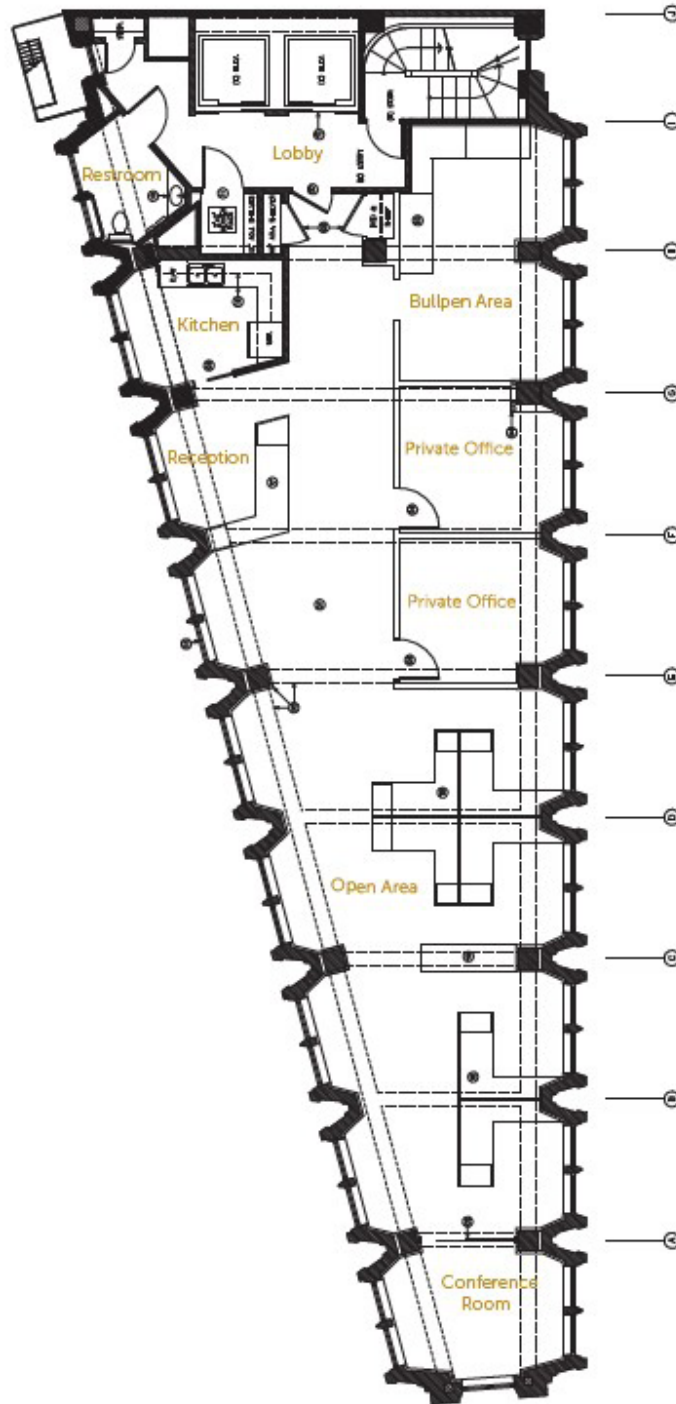
All information furnished regarding property for sale, rental or financing is from sources deemed reliable, but no warranty or representation is made to the accuracy thereof and same is submitted to errors, omissions, change of price, rental or other conditions prior to sale, lease or financing or withdrawal without notice. No liability of any kind is to be imposed on the broker herein.

FOR SALE OR LEASE

1615 BROADWAY | OAKLAND, CA



COMMERCIAL REAL ESTATE SERVICES



EXCLUSIVE AGENTS:

Neil Cowperthwaite, Associate
E \\ ncowperthwaite@lee-associates.com
P \\ 510.903.7603 | LIC# 01912683

Dave McCarty, Principal
E \\ dmccarty@lee-associates.com
P \\ 510.903.7601 | LIC# 01748283

Lee & Associates Oakland Commercial Real Estate | 520 3rd Street, Suite 105, Oakland, CA 94607 | www.lee-associates.com

All information furnished regarding property for sale, rental or financing is from sources deemed reliable, but no warranty or representation is made to the accuracy thereof and same is submitted to errors, omissions, change of price, rental or other conditions prior to sale, lease or financing or withdrawal without notice. No liability of any kind is to be imposed on the broker herein.