



# WALLISVILLE INDUSTRIAL PARK

8801 WALLISVILLE ROAD, SUITE B HOUSTON, TX 77029



## 13,050 SF AVAILABLE



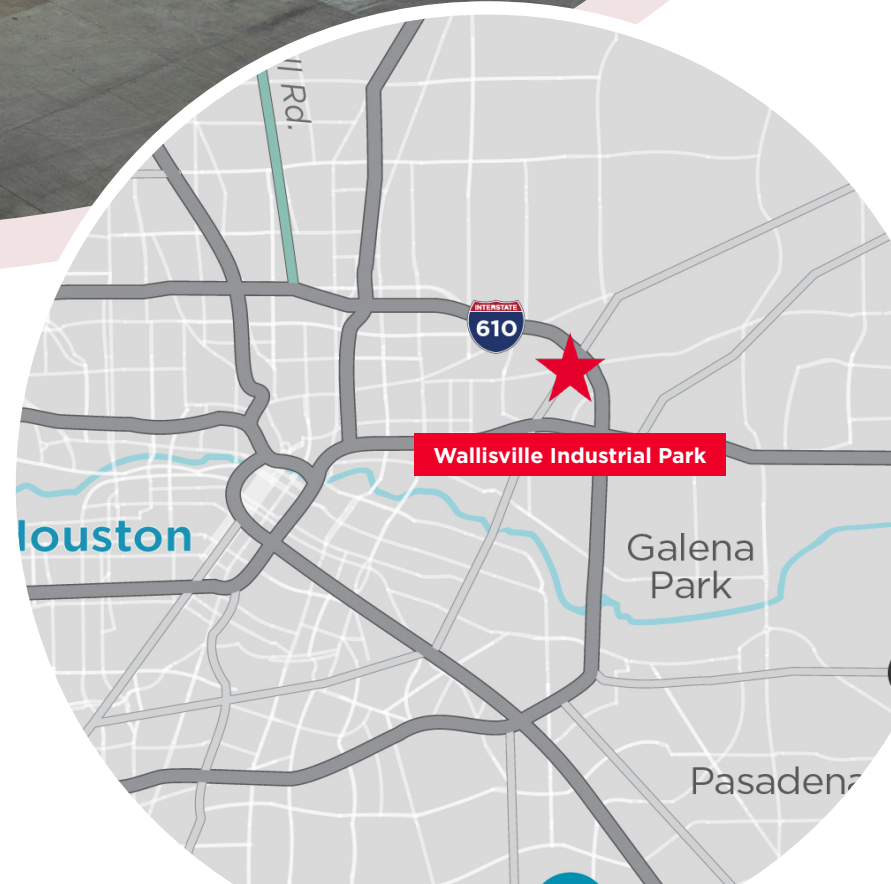


**13,050 SF AVAILABLE**

## SPACE HIGHLIGHTS

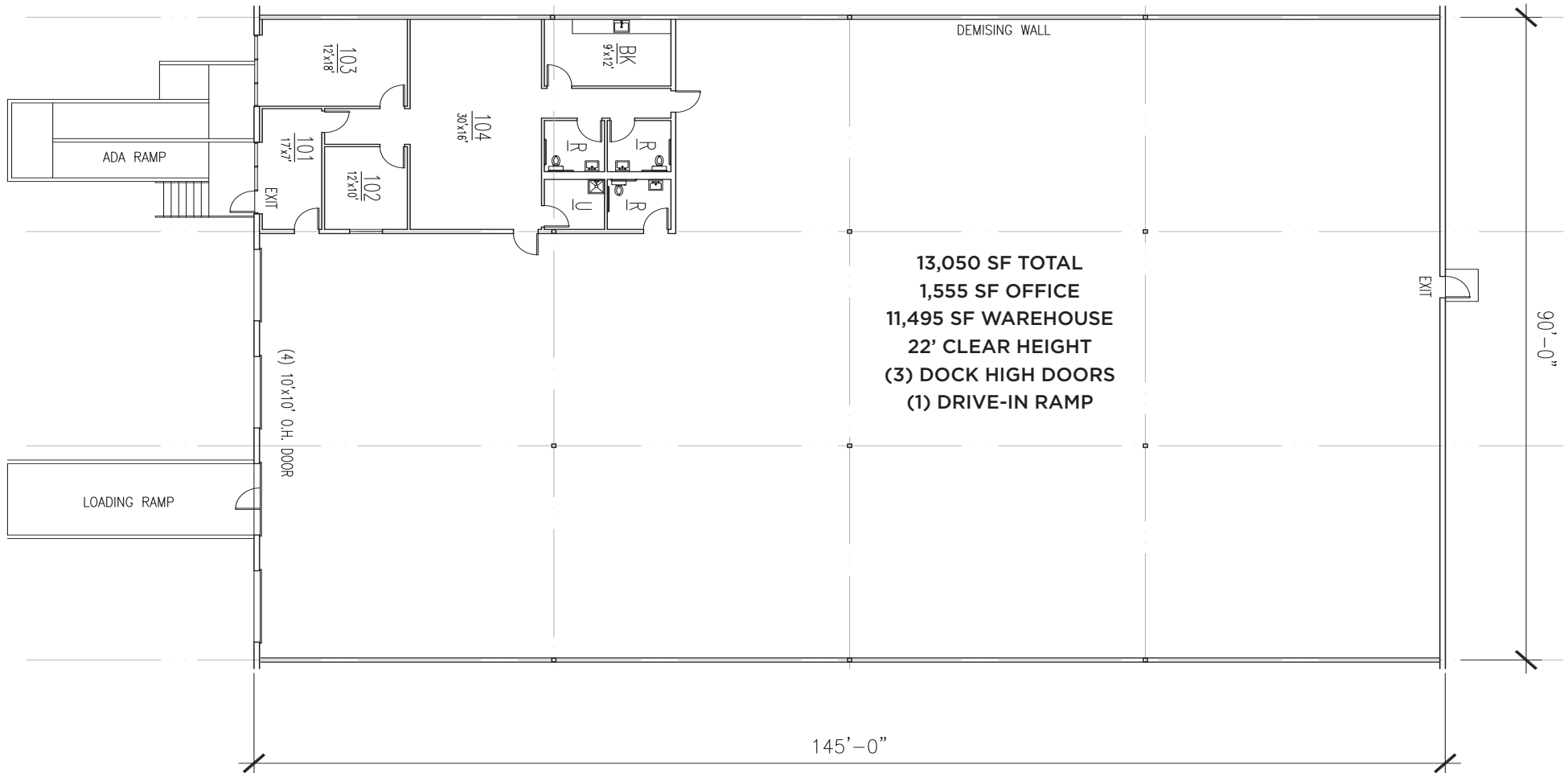
- 13,050 SF Total Available
- 1,555 SF Office
- 11,495 SF Warehouse
- 22' Clear Height
- Sprinkler System
- (3) Dock High Overhead Doors
- (1) Drive-In Ramp
- Secured Fenced Truck Court
- Close Proximity to Houston Ship Channel
- Direct Access to I-10 East and 610 Loop

8801 WALLISVILLE ROAD, SUITE B | HOUSTON, TX 77029



# WALLISVILLE INDUSTRIAL PARK

8801 WALLISVILLE ROAD, SUITE B | HOUSTON, TX 77029



## CONTACT

for more information, please contact:

### JOHN KRUSE

Managing Director

D: +1 281 688 9234

M: +1 713 304 4919

john.kruse@cushwake.com

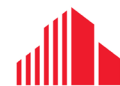
### CARTER HOLMES

Senior Associate

D: +1 281 688 9274

M: +1 713 417 5447

carter.holmes@cushwake.com



**CUSHMAN &  
WAKEFIELD**

cushmanwakefield.com

©2024 Cushman & Wakefield. All rights reserved. The information contained in this communication is strictly confidential. This information has been obtained from sources believed to be reliable but has not been verified. NO WARRANTY OR REPRESENTATION, EXPRESS OR IMPLIED, IS MADE AS TO THE CONDITION OF THE PROPERTY (OR PROPERTIES) REFERENCED HEREIN OR AS TO THE ACCURACY OR COMPLETENESS OF THE INFORMATION CONTAINED HEREIN, AND SAME IS SUBMITTED SUBJECT TO ERRORS, OMISSIONS, CHANGE OF PRICE, RENTAL OR OTHER CONDITIONS, WITHDRAWAL WITHOUT NOTICE, AND TO ANY SPECIAL LISTING CONDITIONS IMPOSED BY THE PROPERTY OWNER(S). ANY PROJECTIONS, OPINIONS OR ESTIMATES ARE SUBJECT TO UNCERTAINTY AND DO NOT SIGNIFY CURRENT OR FUTURE PROPERTY PERFORMANCE.