

1616 EVANS ROAD

OFFICE FOR LEASE | CARY



NATRI PROPERTIES

1616 EVANS ROAD

1616 Evans Road is located at the intersection of Evans Road and NW Cary Parkway in Cary. Only 1 mile to Park West Village, a 100-acre mixed-use development, there are plenty of amenities around this location with shops, upscale casual restaurants, cinema, and events, including free concerts and food trucks.

ADDRESS

1616 Evans Road
Cary, NC 27513

BUILDING SIZE

14,000 RSF (Two Stories)

AVAILABLE

Suite 105: 2,000 RSF

LEASE RATE

\$24.00, Full Service

PARKING

3.93/1,000 SF

HIGHLIGHTS

1 mile from Park West and abundant amenities
1 mile to NC 54
3 miles to I-40
4 miles to Research Triangle Park
4.8 miles to I-540

TRAFFIC COUNTS

NW Cary Pkwy - 11,000 (2019)
Evans Road - 11,000 (2019)

CONTACT

EMILY PFEIFFER | 252.945.9240 | epfeiffer@triprop.com
LEE BISHOP | 919.609.6331 | lbishop@triprop.com

NAITRI PROPERTIES

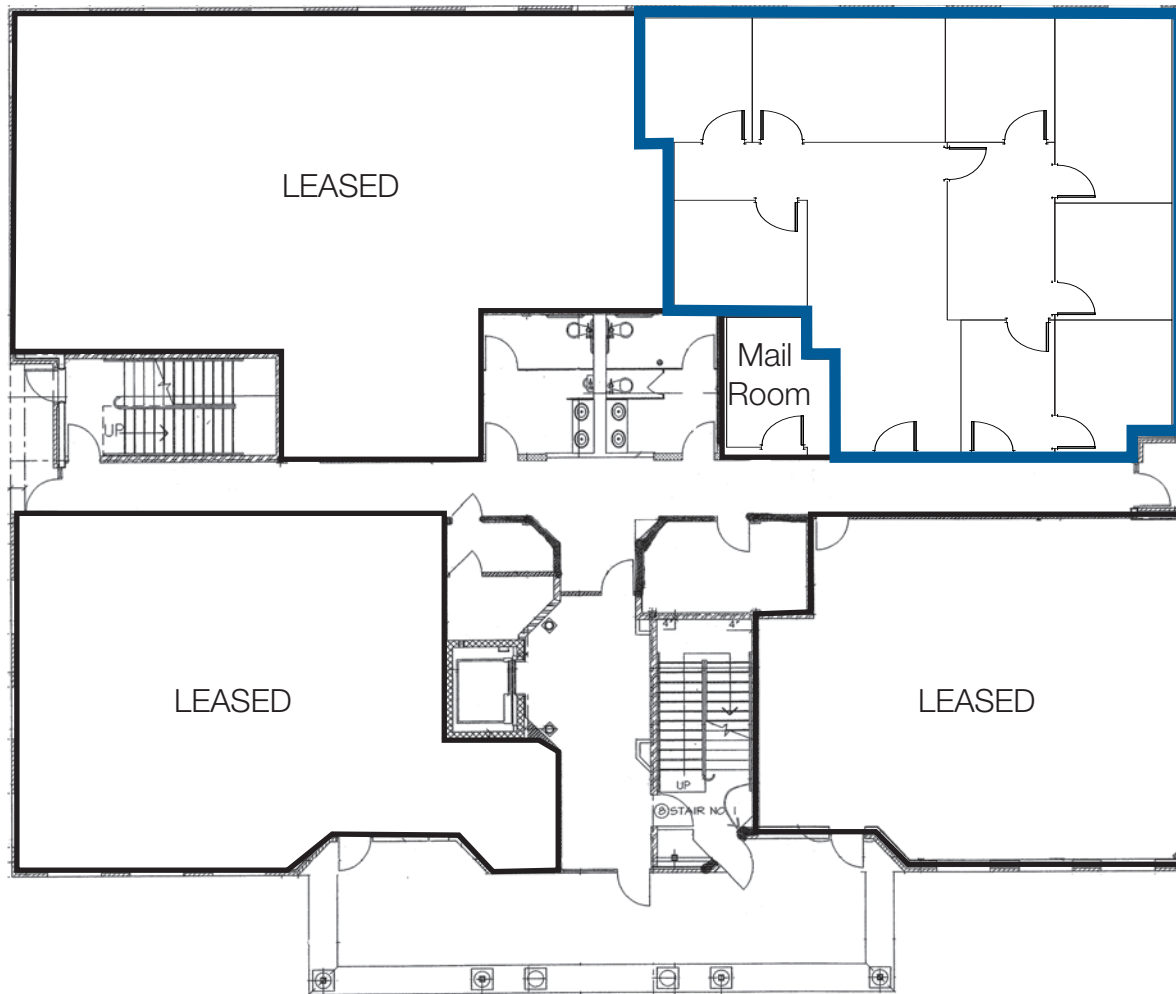


FLOOR PLAN

SUITE 105
2,000 RSF



CLICK OR
SCAN FOR
VIRTUAL
TOUR



CONTACT

EMILY PFEIFFER | 252.945.9240 | epfeiffer@triprop.com

LEE BISHOP | 919.609.6331 | lbishop@triprop.com

All information provided herein is from sources deemed reliable. However, all information is subject to verification. NAI Tri Properties does not independently verify nor warrant the accuracy of the information.



TRIANGLE REGION



AIRPORT

RDU International Airport 4 Miles

SURROUNDING AREAS

- Morrisville 1 Mile
- Raleigh 5 Miles
- Downtown Raleigh 12 Miles
- Downtown Durham 16 Miles
- Chapel Hill 16 Miles

CONTACT

EMILY PFEIFFER | 252.945.9240 | epfeiffer@triprop.com
 LEE BISHOP | 919.609.6331 | lbishop@triprop.com

All information provided herein is from sources deemed reliable. However, all information is subject to verification. NAI Tri Properties does not independently verify nor warrant the accuracy of the information.



AMENITIES

LAKE CRABTREE

THE ARBORETUM & HARRISON SQUARE
3 MILES

1616 EVANS ROAD



PARK WEST
1 MILE

PNC
ARENA

DINING

PARK WEST



THE ARBORETUM & HARRISON SQUARE



BANKING



HOTELS



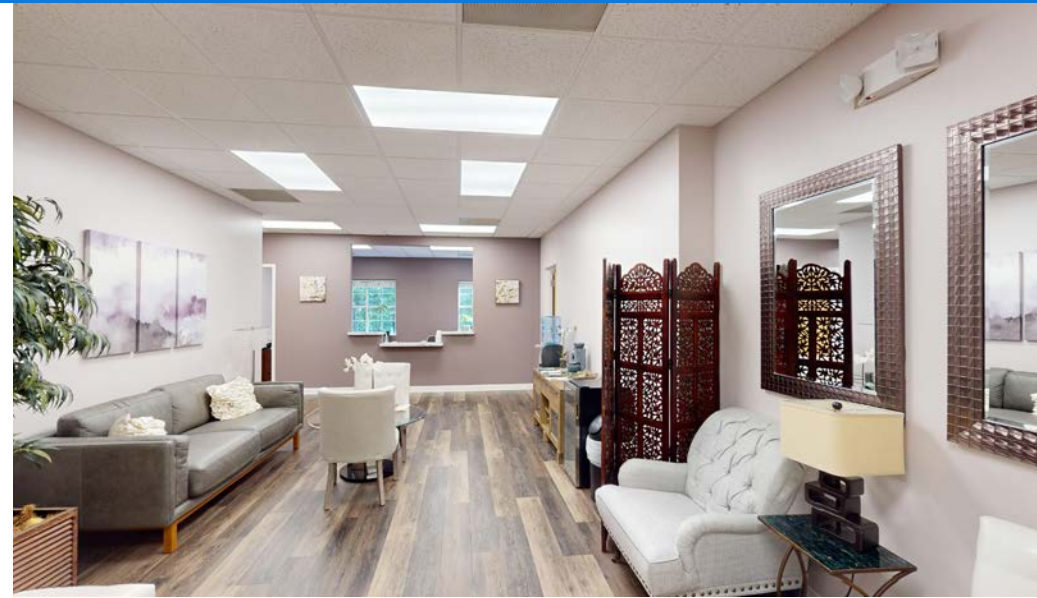
CONTACT

EMILY PFEIFFER | 252.945.9240 | epfeiffer@triprop.com

LEE BISHOP | 919.609.6331 | lbishop@triprop.com

All information provided herein is from sources deemed reliable. However, all information is subject to verification. NAI Tri Properties does not independently verify nor warrant the accuracy of the information.





CONTACT

EMILY PFEIFFER | 252.945.9240 | epfeiffer@triprop.com

LEE BISHOP | 919.609.6331 | lbishop@triprop.com

All information provided herein is from sources deemed reliable. However, all information is subject to verification. NAI Tri Properties does not independently verify nor warrant the accuracy of the information.

NAI TRI PROPERTIES