

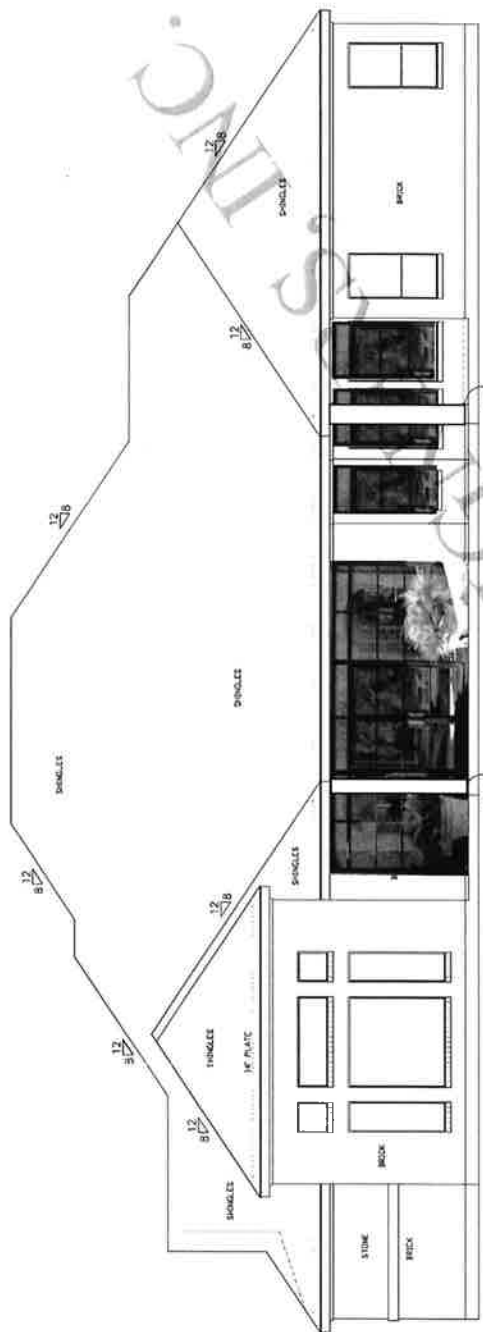


DRAWN BY:
C.S.H.
10/03/2014
DTD NUMBER:
4279 - DAS Design Center
REVISIONS:
12/18/2014 - C.S.H.

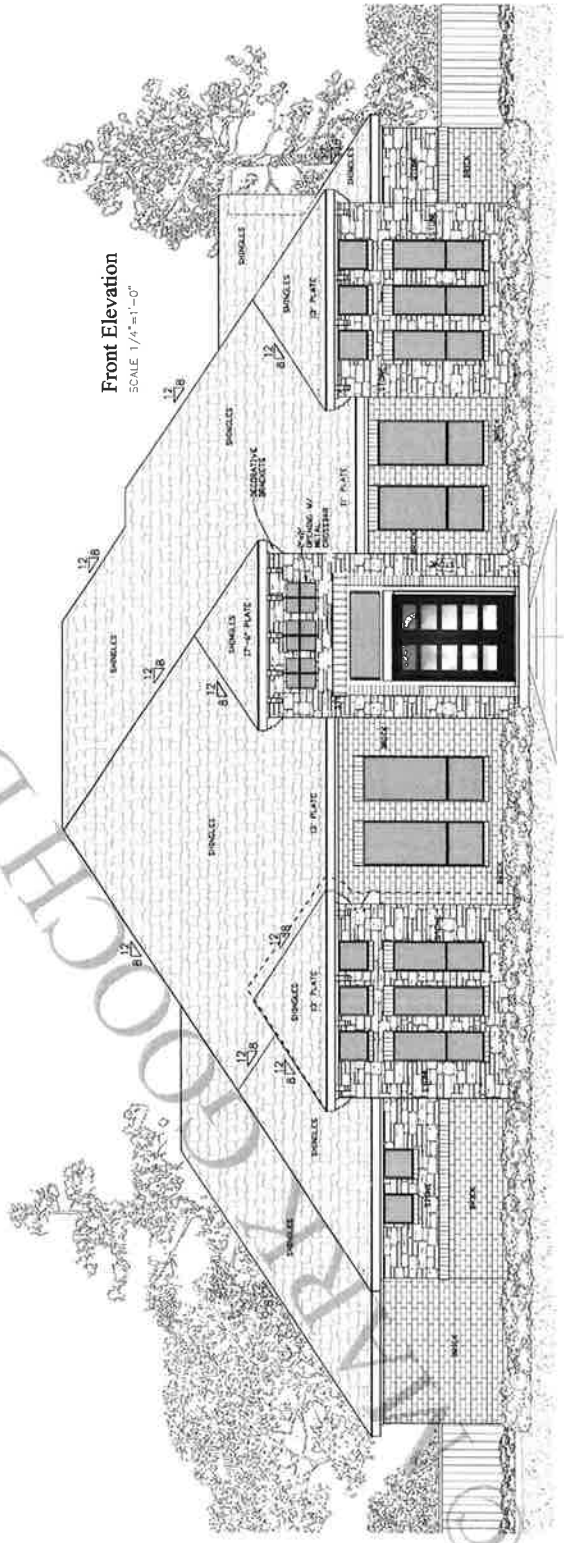
ALL DRAWINGS SHALL BE SUBJECT TO THE TERMS AND CONDITIONS OF THE AGREEMENT BETWEEN THE CLIENT AND THE ARCHITECT. THE ARCHITECT'S RESPONSIBILITY IS LIMITED TO THE DESIGN OF THE BUILDING AS SHOWN ON THESE DRAWINGS. THE ARCHITECT DOES NOT WARRANT THE ACCURACY OF THE INFORMATION PROVIDED BY THE CLIENT. THE ARCHITECT SHALL NOT BE RESPONSIBLE FOR ANY CONSTRUCTION DEFECTS OR OMISSIONS. THE ARCHITECT SHALL NOT BE RESPONSIBLE FOR ANY DELAYS OR COST INCREASES CAUSED BY THE CLIENT OR OTHER THIRD PARTIES. THE ARCHITECT SHALL NOT BE RESPONSIBLE FOR ANY UNLAWFUL ACTS OR OMISSIONS. THE ARCHITECT SHALL NOT BE RESPONSIBLE FOR ANY INADEQUACIES OF THE CLIENT'S INFORMATION. THE ARCHITECT SHALL NOT BE RESPONSIBLE FOR ANY CHANGES TO THE DESIGN OR CONSTRUCTION OF THE BUILDING AFTER THE DATE OF THESE DRAWINGS. THE ARCHITECT SHALL NOT BE RESPONSIBLE FOR ANY DAMAGE TO THE CLIENT'S PROPERTY OR PERSONS. THE ARCHITECT SHALL NOT BE RESPONSIBLE FOR ANY INADEQUACIES OF THE CLIENT'S INFORMATION. THE ARCHITECT SHALL NOT BE RESPONSIBLE FOR ANY CHANGES TO THE DESIGN OR CONSTRUCTION OF THE BUILDING AFTER THE DATE OF THESE DRAWINGS. THE ARCHITECT SHALL NOT BE RESPONSIBLE FOR ANY DAMAGE TO THE CLIENT'S PROPERTY OR PERSONS.

Dunn & Stone Builders

MARK GOOCH
ARCHITECTS, INC.
www.markgoochdesign.com
V: (281) 376-0507 F: (281) 376-0540
17017 Seven Pines Drive, Spring, Texas 77379

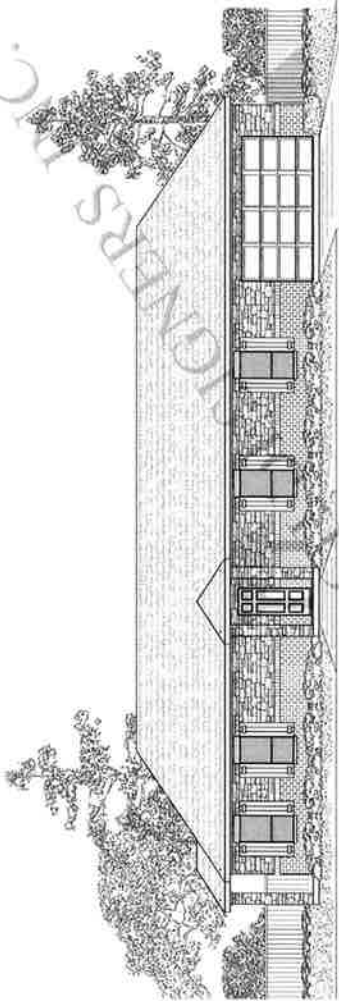


Rear Elevation
SCALE 1/4"=1'-0"



Front Elevation
SCALE 1/4"=1'-0"

Dunn and Stone Builders Design Center Building 2 - SH 249



DRAWING INDEX

SECTION: SEE SHEET
 FOUNDATION: SEE SHEET
 ROOF: SEE SHEET
 EXTERIOR: SEE SHEET
 INTERIOR: SEE SHEET
 FINISHES: SEE SHEET
 ELECTRICAL: SEE SHEET
 MECHANICAL: SEE SHEET
 PLUMBING: SEE SHEET
 PAINTS: SEE SHEET
 DETAILS: SEE SHEET

PROJECT DIRECTORY

ARCHITECT: D&S Stone Builders, LLC
 18850 Highway 249
 Springtown, TN 37174
 PROJECT NO: SH 249
 PROJECT NAME: DUNN AND STONE BUILDERS DESIGN CENTER
 18850 Highway 249
 Springtown, TN 37174

OWNER: D&S Stone Builders, LLC
 18850 Highway 249
 Springtown, TN 37174

GENERAL CONTRACTOR: TEAM COZE BLDG
 18850 Highway 249
 Springtown, TN 37174

MECHANICAL: TEAM COZE BLDG
 18850 Highway 249
 Springtown, TN 37174

ELECTRICAL: TEAM COZE BLDG
 18850 Highway 249
 Springtown, TN 37174

PAINTS: TEAM COZE BLDG
 18850 Highway 249
 Springtown, TN 37174



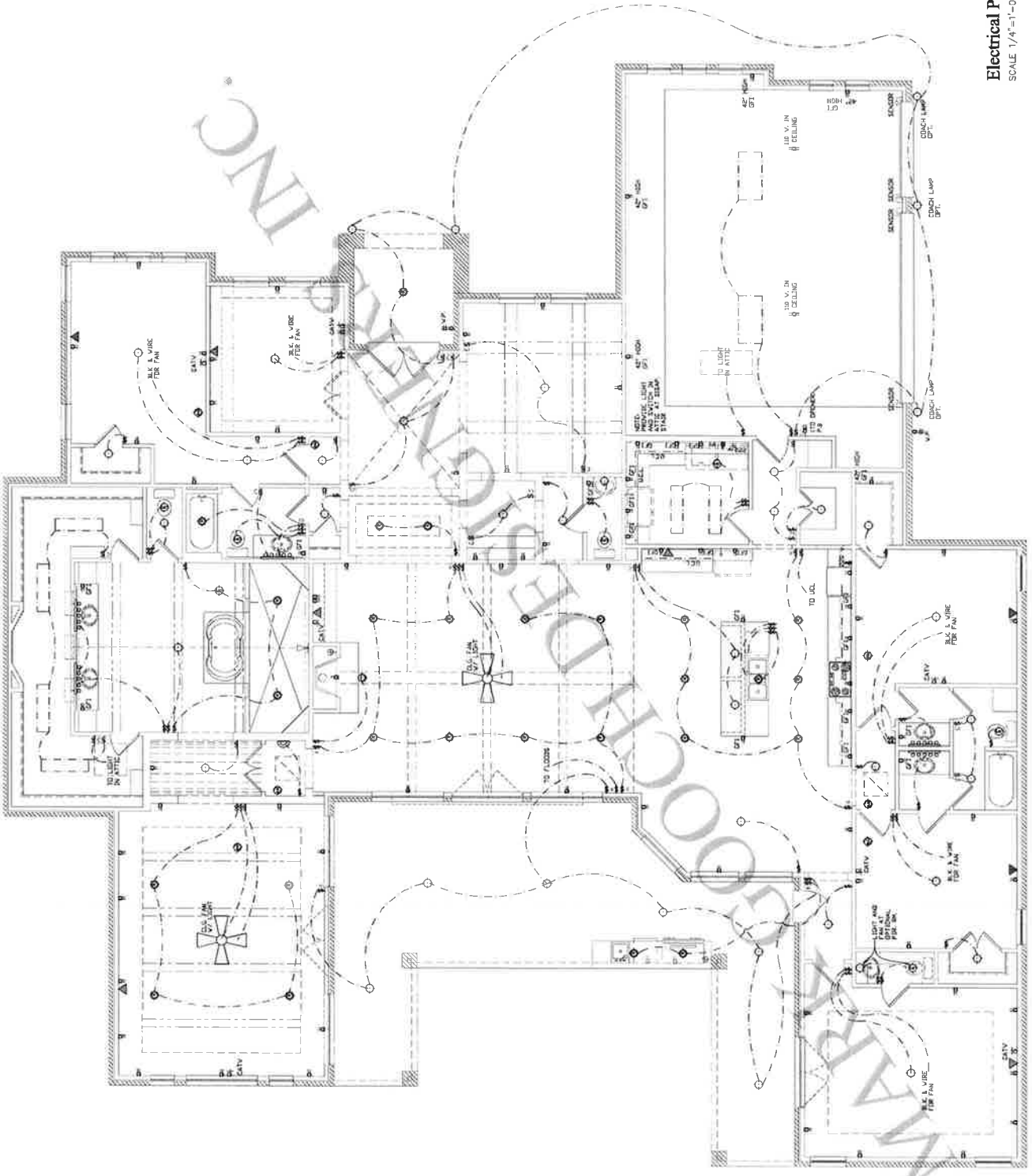
MARK GOETZ
 Professional Engineer
 1817 South Main Street, Suite 217
 Nashville, TN 37203
 (615) 259-0000
 www.markgoetz.com

Dunn and Stone Builders

ALL BIDD

DATE: 07/17/2014
 TIME: 12:00 PM
 PROJECT: DUNN AND STONE BUILDERS DESIGN CENTER
 ADDRESS: 18850 HWY 249, SPRINGTOWN, TN 37174

*** DO NOT DUPLICATE ***



Electrical Legend

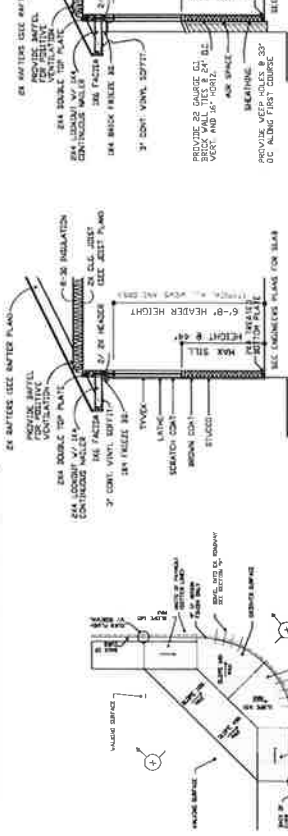
	ELECTRICAL OUTLET
	EXTERIOR OUTLET
	200 VOLT
	100V. IN FLOOR
	100V. ABOVE
	SURFACE MOUNT FIXTURE
	RECESSED FIXTURE
	WALL SOCKET
	TRANSITIONAL RECESSED
	SINGLE OR DOUBLE
	CEILING FAN
	CEILING FAN W/ LIGHT
	CEILING FAN W/ LIGHT 411 SWITCH SEPARATELY
	CHASSIS FAN
	PHOTO PANEL JACK
	SWITCH
	2 CIRCUIT SWITCH
	100W FLUORESCENT FIXTURE
	40W FLUORESCENT FIXTURE
	EXIT FIXTURE OR EXIT LIGHT
	SEE NOTES



1. FIREPLACE HEARTH SHALL BE 3/8" MINIMUM THICK NONCOMBUSTIBLE MATERIAL.
2. COMBUSTIBLE MATERIAL SHALL BE PLACED WITHIN 1" OF HEARTH.
3. PREFAB FIREPLACE SHALL BE I.C.B.O. APPROVED. MANUFACTURER'S MANUAL SHALL BE PROVIDED TO FIELD INSPECTOR.
4. FIREPLACE CHIMNEY SHALL BE 2'-0" HIGHER THAN ANY STRUCTURE WITHIN 10'-0".

27. CHILING JOISTS - 4x8 FRAMING PLAN
28. 1x4 LET IN CORNER BRACE
29. FLOOR JOISTS PER FRAMING PLAN
30. FLOOR DECKING - REF. SPECIFICATIONS
31. DOUBLE FLOOR JOISTS UNDER PARALLEL WALLS ABOVE UNDER PARALLEL JOISTS TO 10' O.C. MAX. AT UNDER WALLS ABOVE PERPENDICULAR TO FLOOR JOISTS.

- 24X STUD WALLS AT 16" O.C.
- 24X CONTINUOUS DOUBLE TOP PLATES, LAPPED AT CORNERS AND "T"
- 24X CONTINUOUS BOTTOM PLATE
- 1x4 LET IN CORNER BRACETS SET AT 45 DEGREE ANGLE.



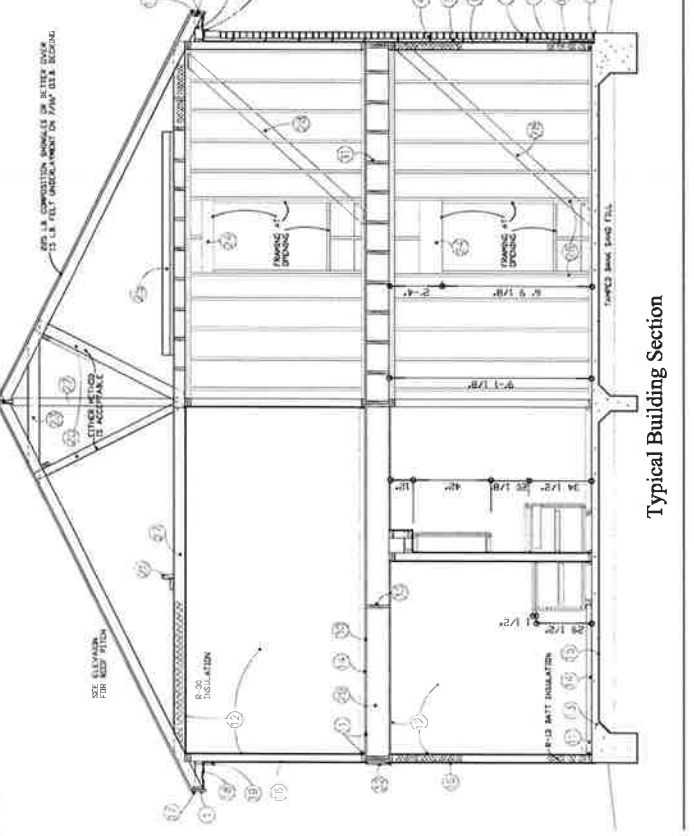
**Exterior 1 Story Wall Section
Brick Application**
SCALE - 3/8"=1'-0"

**Exterior 1 Story Wall Section
Stucco Application**
SCALE - 3/8"=1'-0"

3. 2x4 LOOKOUT WITH 1x4 CONTINUOUS MAILER
4. BRICK VENEER
5. AIR SPACE
6. SHEATHING OR PLYWOOD WHERE REQUIRED BY WINDSTORM.
7. 1x4 BRICK TIES AT 16" O.C. HORIZONTAL AND 24" VERTICAL
8. 2x4 WOLMINIZED BOTTOM PLATE W/ MIN 1/2" DIAM BY 10" LENGTH ANCHOR BOLTS W/ A MIN. 7" EMBEDMENT INTO CONCRETE.
9. 6 MIL POLY VISQUEEN, 12" HIGH
10. WEAP HOLES IN MASONRY WALLS TO HAVE A MAXIMUM SPACING OF 33" (INCHES) ON CENTER AS PER SECTION 8703.7.6 TONS.
11. 1x4 BRICK TIES AT 16" O.C. HORIZONTAL AND 24" VERTICAL
12. 1x4 COP BOARD AT WALLS AND CEILING 5/8" AT BAR, C.G., AND PARTY WALLS
13. CONCRETE SLAB, SEE ENGINEERING DETAILS.
14. FLOORING, SEE PLANS.
15. 6 MIL POLY UNDERLAYMENT.
16. 1/2" SHINGLE MOULD-INSTALLED ON GABLES
17. 5/16" FIBER CEMENT 3" VINYL CONT. SOFFIT WITH 8"x16" VENTS AT 24" O.C.
18. 1x4 FIBER BOARD.
19. 2x4 CONTINUOUS PURIN, EQUAL SIZE TO RAFTER SUPPORTED, W/ 2x4 WHEN ACCEPTABLE BY LOCAL CODES.
20. 2x4 COLLAR BRACE AT 7" OVER 96" IN LENGTH.
21. RIDGE BOARD, ONE SIZE LARGER THAN RAFTERS.
22. 2x4 RIDGE BRACE AT 7" OVER 96" IN LENGTH.
23. 2x4 COLLAR TIES 48" O.C. OR LESS.
24. HEADER - SEE SCHEDULE.
25. STRONGBACK-2x4 FLAT, WITH 2x6 ON EDGE, NAILED TO C.G. JOISTS AND NAILED INTO EDGE OF 2x4 - AT MIDSPAN WHEN ROOM IS 8'-0" OR WIDER.



Typical Building Section



Typical Building Section

CEILING JOIST AND SPAN	CEILING JOIST AND SPAN	CEILING JOIST AND SPAN	CEILING JOIST AND SPAN
18" O.C. 1x4 JOIST @ 16" O.C. SPAN	18" O.C. 1x4 JOIST @ 16" O.C. SPAN	18" O.C. 1x4 JOIST @ 16" O.C. SPAN	18" O.C. 1x4 JOIST @ 16" O.C. SPAN
18" O.C. 1x4 JOIST @ 16" O.C. SPAN	18" O.C. 1x4 JOIST @ 16" O.C. SPAN	18" O.C. 1x4 JOIST @ 16" O.C. SPAN	18" O.C. 1x4 JOIST @ 16" O.C. SPAN
18" O.C. 1x4 JOIST @ 16" O.C. SPAN	18" O.C. 1x4 JOIST @ 16" O.C. SPAN	18" O.C. 1x4 JOIST @ 16" O.C. SPAN	18" O.C. 1x4 JOIST @ 16" O.C. SPAN
18" O.C. 1x4 JOIST @ 16" O.C. SPAN	18" O.C. 1x4 JOIST @ 16" O.C. SPAN	18" O.C. 1x4 JOIST @ 16" O.C. SPAN	18" O.C. 1x4 JOIST @ 16" O.C. SPAN

DO NOT EXCEED GIVEN DIM.

1. FIREPLACE HEARTH SHALL BE 3/8" MINIMUM THICK NONCOMBUSTIBLE MATERIAL.
2. COMBUSTIBLE MATERIAL SHALL BE PLACED WITHIN 1" OF HEARTH.
3. PREFAB FIREPLACE SHALL BE I.C.B.O. APPROVED. MANUFACTURER'S MANUAL SHALL BE PROVIDED TO FIELD INSPECTOR.
4. FIREPLACE CHIMNEY SHALL BE 2'-0" HIGHER THAN ANY STRUCTURE WITHIN 10'-0".

27. CHILING JOISTS - 4x8 FRAMING PLAN
28. 1x4 LET IN CORNER BRACE
29. FLOOR JOISTS PER FRAMING PLAN
30. FLOOR DECKING - REF. SPECIFICATIONS
31. DOUBLE FLOOR JOISTS UNDER PARALLEL WALLS ABOVE UNDER PARALLEL JOISTS TO 10' O.C. MAX. AT UNDER WALLS ABOVE PERPENDICULAR TO FLOOR JOISTS.

24X STUD WALLS AT 16" O.C.
24X CONTINUOUS DOUBLE TOP PLATES, LAPPED AT CORNERS AND "T"
24X CONTINUOUS BOTTOM PLATE
1x4 LET IN CORNER BRACETS SET AT 45 DEGREE ANGLE.

24X STUD WALLS AT 16" O.C.
24X CONTINUOUS DOUBLE TOP PLATES, LAPPED AT CORNERS AND "T"
24X CONTINUOUS BOTTOM PLATE
1x4 LET IN CORNER BRACETS SET AT 45 DEGREE ANGLE.

24X STUD WALLS AT 16" O.C.
24X CONTINUOUS DOUBLE TOP PLATES, LAPPED AT CORNERS AND "T"
24X CONTINUOUS BOTTOM PLATE
1x4 LET IN CORNER BRACETS SET AT 45 DEGREE ANGLE.

24X STUD WALLS AT 16" O.C.
24X CONTINUOUS DOUBLE TOP PLATES, LAPPED AT CORNERS AND "T"
24X CONTINUOUS BOTTOM PLATE
1x4 LET IN CORNER BRACETS SET AT 45 DEGREE ANGLE.

24X STUD WALLS AT 16" O.C.
24X CONTINUOUS DOUBLE TOP PLATES, LAPPED AT CORNERS AND "T"
24X CONTINUOUS BOTTOM PLATE
1x4 LET IN CORNER BRACETS SET AT 45 DEGREE ANGLE.



1. FIREPLACE HEARTH SHALL BE 3/8" MINIMUM THICK NONCOMBUSTIBLE MATERIAL.
2. COMBUSTIBLE MATERIAL SHALL BE PLACED WITHIN 1" OF HEARTH.
3. PREFAB FIREPLACE SHALL BE I.C.B.O. APPROVED. MANUFACTURER'S MANUAL SHALL BE PROVIDED TO FIELD INSPECTOR.
4. FIREPLACE CHIMNEY SHALL BE 2'-0" HIGHER THAN ANY STRUCTURE WITHIN 10'-0".

27. CHILING JOISTS - 4x8 FRAMING PLAN
28. 1x4 LET IN CORNER BRACE
29. FLOOR JOISTS PER FRAMING PLAN
30. FLOOR DECKING - REF. SPECIFICATIONS
31. DOUBLE FLOOR JOISTS UNDER PARALLEL WALLS ABOVE UNDER PARALLEL JOISTS TO 10' O.C. MAX. AT UNDER WALLS ABOVE PERPENDICULAR TO FLOOR JOISTS.

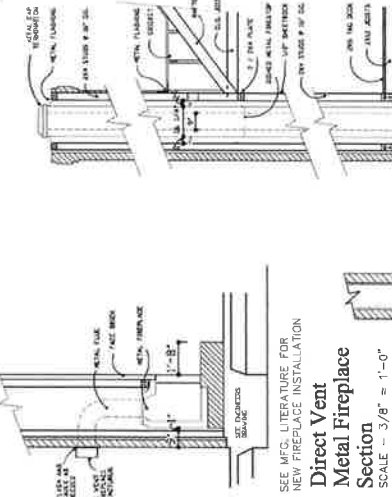
24X STUD WALLS AT 16" O.C.
24X CONTINUOUS DOUBLE TOP PLATES, LAPPED AT CORNERS AND "T"
24X CONTINUOUS BOTTOM PLATE
1x4 LET IN CORNER BRACETS SET AT 45 DEGREE ANGLE.

24X STUD WALLS AT 16" O.C.
24X CONTINUOUS DOUBLE TOP PLATES, LAPPED AT CORNERS AND "T"
24X CONTINUOUS BOTTOM PLATE
1x4 LET IN CORNER BRACETS SET AT 45 DEGREE ANGLE.

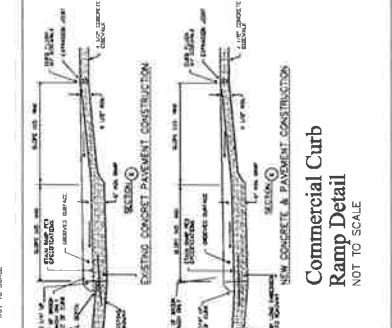
24X STUD WALLS AT 16" O.C.
24X CONTINUOUS DOUBLE TOP PLATES, LAPPED AT CORNERS AND "T"
24X CONTINUOUS BOTTOM PLATE
1x4 LET IN CORNER BRACETS SET AT 45 DEGREE ANGLE.

24X STUD WALLS AT 16" O.C.
24X CONTINUOUS DOUBLE TOP PLATES, LAPPED AT CORNERS AND "T"
24X CONTINUOUS BOTTOM PLATE
1x4 LET IN CORNER BRACETS SET AT 45 DEGREE ANGLE.

Standard Details



Direct Vent Metal Fireplace Section
SCALE - 3/8"=1'-0"



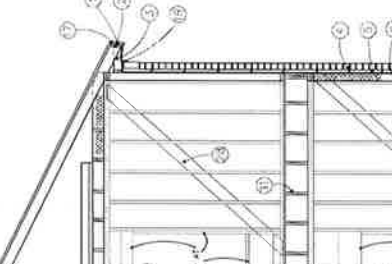
Masonry Fireplace Section
SCALE - 3/8"=1'-0"

CLEAR SPAN	LINTEL SIZE
4'-0" OR LESS	L3 1/2 X 3 1/2 X 5/16
6'-0"	L4 X 3 1/2 X 5/16
8'-0"	L5 X 3 1/2 X 5/16
10'-0"	L6 X 3 1/2 X 3/8

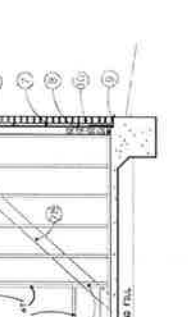
NOTE: ALL LINTELS TO BE LONG LEG VERTICAL (LLV) UNO.

1. LINTEL STEEL SHALL BE PER ASTM A36.
2. LINTELS SHALL BEAR 6" MIN. IN MASONRY AT EACH END.
3. LINTELS SHALL NOT BE CONNECTED TO WOOD FRAMING, EXCEPT WHERE INSTALLED TO SUPPORT BRICK OVER ROOF.
4. LINTELS SHALL BE COATED IN ACCORDANCE WITH LOCAL BUILDING CODE REQUIREMENTS FOR CORROSION RESISTANCE.
5. SEE STRUCTURAL DETAILS FOR LINTELS WITH SPANS GREATER THAN 10'-0".

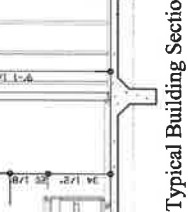
Commercial Curb Ramp Detail
NOT TO SCALE



Commercial Curb Ramp Detail
NOT TO SCALE

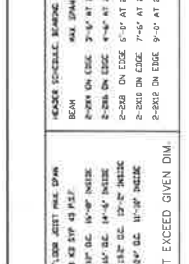


Direct Vent Metal Fireplace Section
SCALE - 3/8"=1'-0"

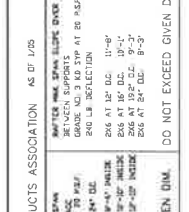


Masonry Fireplace Section
SCALE - 3/8"=1'-0"

Metal Fireplace Section
SCALE - 3/8"=1'-0"



Metal Fireplace Section
SCALE - 3/8"=1'-0"



Masonry Fireplace Section
SCALE - 3/8"=1'-0"

SEE MFG. LITERATURE FOR NEW FIREPLACE INSTALLATION

SEE MFG. LITERATURE FOR NEW FIREPLACE INSTALLATION



1. FIREPLACE HEARTH SHALL BE 3/8" MINIMUM THICK NONCOMBUSTIBLE MATERIAL.
2. COMBUSTIBLE MATERIAL SHALL BE PLACED WITHIN 1" OF HEARTH.
3. PREFAB FIREPLACE SHALL BE I.C.B.O. APPROVED. MANUFACTURER'S MANUAL SHALL BE PROVIDED TO FIELD INSPECTOR.
4. FIREPLACE CHIMNEY SHALL BE 2'-0" HIGHER THAN ANY STRUCTURE WITHIN 10'-0".

27. CHILING JOISTS - 4x8 FRAMING PLAN
28. 1x4 LET IN CORNER BRACE
29. FLOOR JOISTS PER FRAMING PLAN
30. FLOOR DECKING - REF. SPECIFICATIONS
31. DOUBLE FLOOR JOISTS UNDER PARALLEL WALLS ABOVE UNDER PARALLEL JOISTS TO 10' O.C. MAX. AT UNDER WALLS ABOVE PERPENDICULAR TO FLOOR JOISTS.

24X STUD WALLS AT 16" O.C.
24X CONTINUOUS DOUBLE TOP PLATES, LAPPED AT CORNERS AND "T"
24X CONTINUOUS BOTTOM PLATE
1x4 LET IN CORNER BRACETS SET AT 45 DEGREE ANGLE.

24X STUD WALLS AT 16" O.C.
24X CONTINUOUS DOUBLE TOP PLATES, LAPPED AT CORNERS AND "T"
24X CONTINUOUS BOTTOM PLATE
1x4 LET IN CORNER BRACETS SET AT 45 DEGREE ANGLE.

24X STUD WALLS AT 16" O.C.
24X CONTINUOUS DOUBLE TOP PLATES, LAPPED AT CORNERS AND "T"
24X CONTINUOUS BOTTOM PLATE
1x4 LET IN CORNER BRACETS SET AT 45 DEGREE ANGLE.

24X STUD WALLS AT 16" O.C.
24X CONTINUOUS DOUBLE TOP PLATES, LAPPED AT CORNERS AND "T"
24X CONTINUOUS BOTTOM PLATE
1x4 LET IN CORNER BRACETS SET AT 45 DEGREE ANGLE.

MARK GOOCH
Engineers, Inc.
www.markgoochengineers.com
(281) 376-0507 F (281) 376-0540
17017 Seven Pines Drive, Spring, Texas 77379

MARK GOOCH
Engineers, Inc.
www.markgoochengineers.com
(281) 376-0507 F (281) 376-0540
17017 Seven Pines Drive, Spring, Texas 77379

MARK GOOCH
Engineers, Inc.
www.markgoochengineers.com
(281) 376-0507 F (281) 376-0540
17017 Seven Pines Drive, Spring, Texas 77379

MARK GOOCH
Engineers, Inc.
www.markgoochengineers.com
(281) 376-0507 F (281) 376-0540
17017 Seven Pines Drive, Spring, Texas 77379

MARK GOOCH
Engineers, Inc.
www.markgoochengineers.com
(281) 376-0507 F (281) 376-0540
17017 Seven Pines Drive, Spring, Texas 77379

MARK GOOCH
Engineers, Inc.
www.markgoochengineers.com
(281) 376-0507 F (281) 376-0540
17017 Seven Pines Drive, Spring, Texas 77379

MARK GOOCH
Engineers, Inc.
www.markgoochengineers.com
(281) 376-0507 F (281) 376-0540
17017 Seven Pines Drive, Spring, Texas 77379

MARK GOOCH
Engineers, Inc.
www.markgoochengineers.com
(281) 376-0507 F (281) 376-0540
17017 Seven Pines Drive, Spring, Texas 77379

MARK GOOCH
Engineers, Inc.
www.markgoochengineers.com
(281) 376-0507 F (281) 376-0540
17017 Seven Pines Drive, Spring, Texas 77379



1. FIREPLACE HEARTH SHALL BE 3/8" MINIMUM THICK NONCOMBUSTIBLE MATERIAL.
2. COMBUSTIBLE MATERIAL SHALL BE PLACED WITHIN 1" OF HEARTH.
3. PREFAB FIREPLACE SHALL BE I.C.B.O. APPROVED. MANUFACTURER'S MANUAL SHALL BE PROVIDED TO FIELD INSPECTOR.
4. FIREPLACE CHIMNEY SHALL BE 2'-0" HIGHER THAN ANY STRUCTURE WITHIN 10'-0".

27. CHILING JOISTS - 4x8 FRAMING PLAN
28. 1x4 LET IN CORNER BRACE
29. FLOOR JOISTS PER FRAMING PLAN
30. FLOOR DECKING - REF. SPECIFICATIONS
31. DOUBLE FLOOR JOISTS UNDER PARALLEL WALLS ABOVE UNDER PARALLEL JOISTS TO 10' O.C. MAX. AT UNDER WALLS ABOVE PERPENDICULAR TO FLOOR JOISTS.

24X STUD WALLS AT 16" O.C.
24X CONTINUOUS DOUBLE TOP PLATES, LAPPED AT CORNERS AND "T"
24X CONTINUOUS BOTTOM PLATE
1x4 LET IN CORNER BRACETS SET AT 45 DEGREE ANGLE.

24X STUD WALLS AT 16" O.C.
24X CONTINUOUS DOUBLE TOP PLATES, LAPPED AT CORNERS AND "T"
24X CONTINUOUS BOTTOM PLATE
1x4 LET IN CORNER BRACETS SET AT 45 DEGREE ANGLE.

24X STUD WALLS AT 16" O.C.
24X CONTINUOUS DOUBLE TOP PLATES, LAPPED AT CORNERS AND "T"
24X CONTINUOUS BOTTOM PLATE
1x4 LET IN CORNER BRACETS SET AT 45 DEGREE ANGLE.

24X STUD WALLS AT 16" O.C.
24X CONTINUOUS DOUBLE TOP PLATES, LAPPED AT CORNERS AND "T"
24X CONTINUOUS BOTTOM PLATE
1x4 LET IN CORNER BRACETS SET AT 45 DEGREE ANGLE.