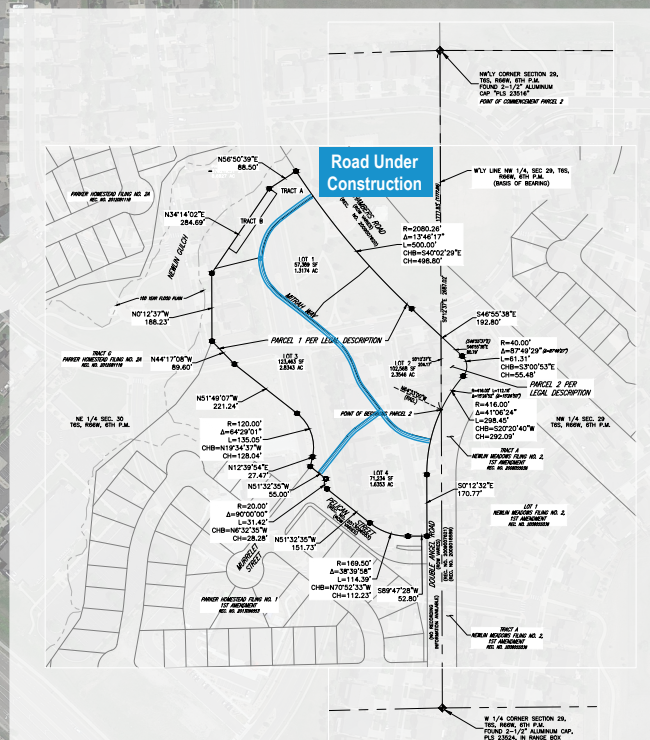


COMMERCIAL LOT FOR SALE

PARKER HOMESTEAD COMMERCIAL

NWC OF S. CHAMBERS RD. & DOUBLE ANGEL RD., PARKER, CO 80134



PROPERTY FEATURES

- Prime Retail / Commercial Lot on S. Chambers Road
- Remaining 2.83 Acre Lot Sub-divisible
- Access at Signalized Intersection and Right-in / Right-Out on Southbound Chambers Rd.
- Adjacent to EchoPark Stadium
- Growing Traffic Counts and Strong Demographics
- Surrounded by Established & Growing Residential Development

PROPERTY DETAILS

LAND SIZE	2.83 AC
PRICE	\$18.00 / PSF
ZONING	P.D. / Commercial / Retail
WATER / SAN	Parker Water & Sanitation
GAS / ELECTRIC	CORE / Xcel Energy
CITY / COUNTY	Parker / Douglas

DEMOGRAPHICS

Radius	Population	Income	Home Value
2 Mile	28,449	\$184,910	\$490,159
5 Mile	136,128	\$154,145	\$488,204
10 Mile	587,615	\$151,254	\$496,252

*2028 Projected Population

PARKER MARKET SERVICE AREA

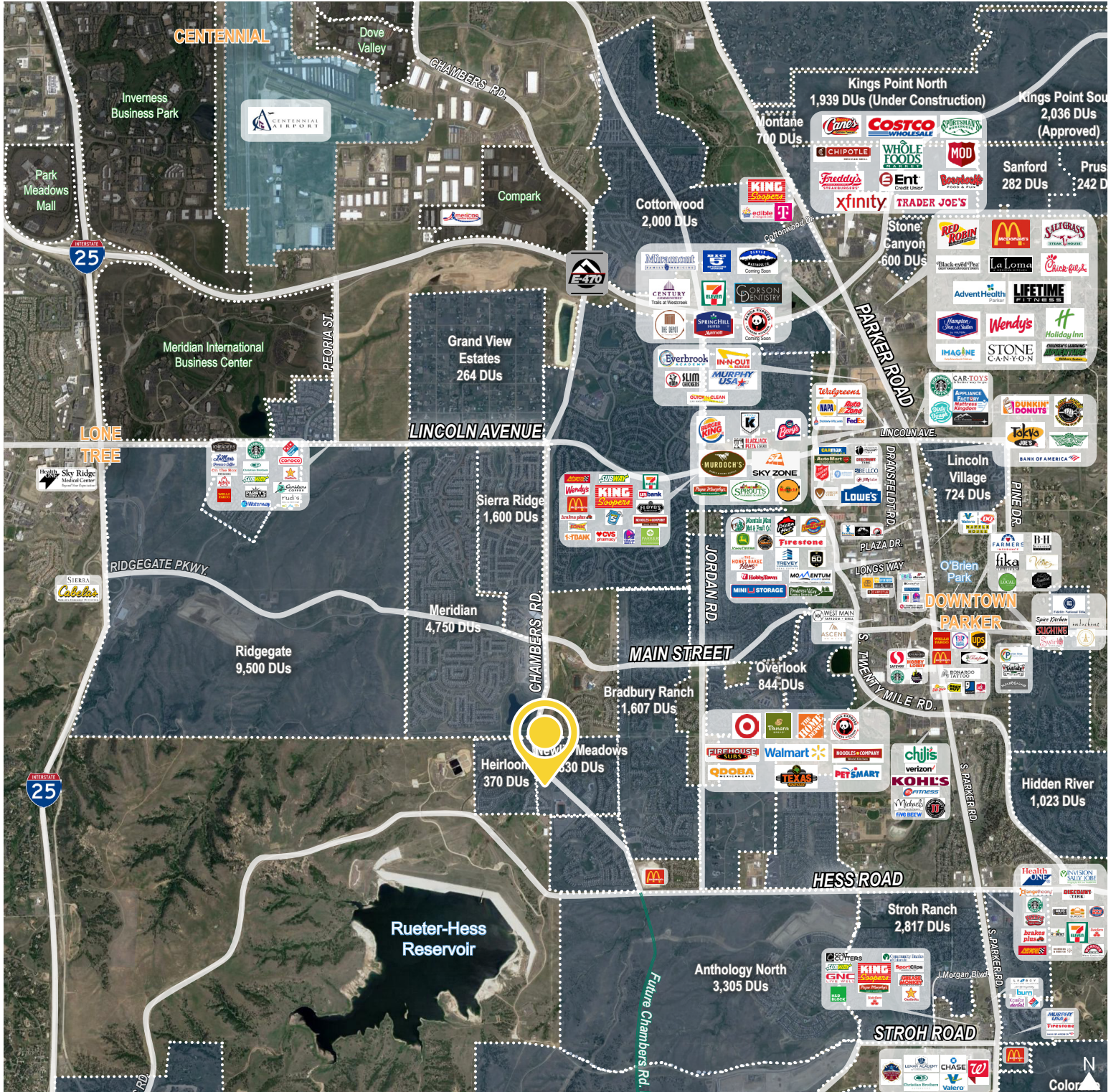
- Parker, CO consists of two zip codes (80134 & 80138) delivering **±107,434 Residents**.
- 80134 is the **2nd Most Populous Zip Code** in the State of Colorado out of 513 Zip Codes.

TRAFFIC COUNTS

Vehicles Per Day (VPD)

- Approx. 12,300 VPD on Chambers Rd.
- Approx. 14,000 VPD on Hess Rd.
- Approx. 69,000 VPD on Parker Rd.

SURROUNDING AREA



TREVEY COMMERCIAL
 10510 Dransfeldt Rd, Suite 100
 Parker, Colorado 80134
 303-841-1400 | www.trevey.com

MITCH TREVEY
 Managing Director
mitch@trevey.com
 C: 303-619-7192

[CLICK HERE TO DOWNLOAD CREC BROKERAGE DISCLOSURE](#)

Information contained herein, while not guaranteed, is from sources believed reliable. Price, terms and information subject to change. Please call to confirm current property status and accuracy of information contained herein.